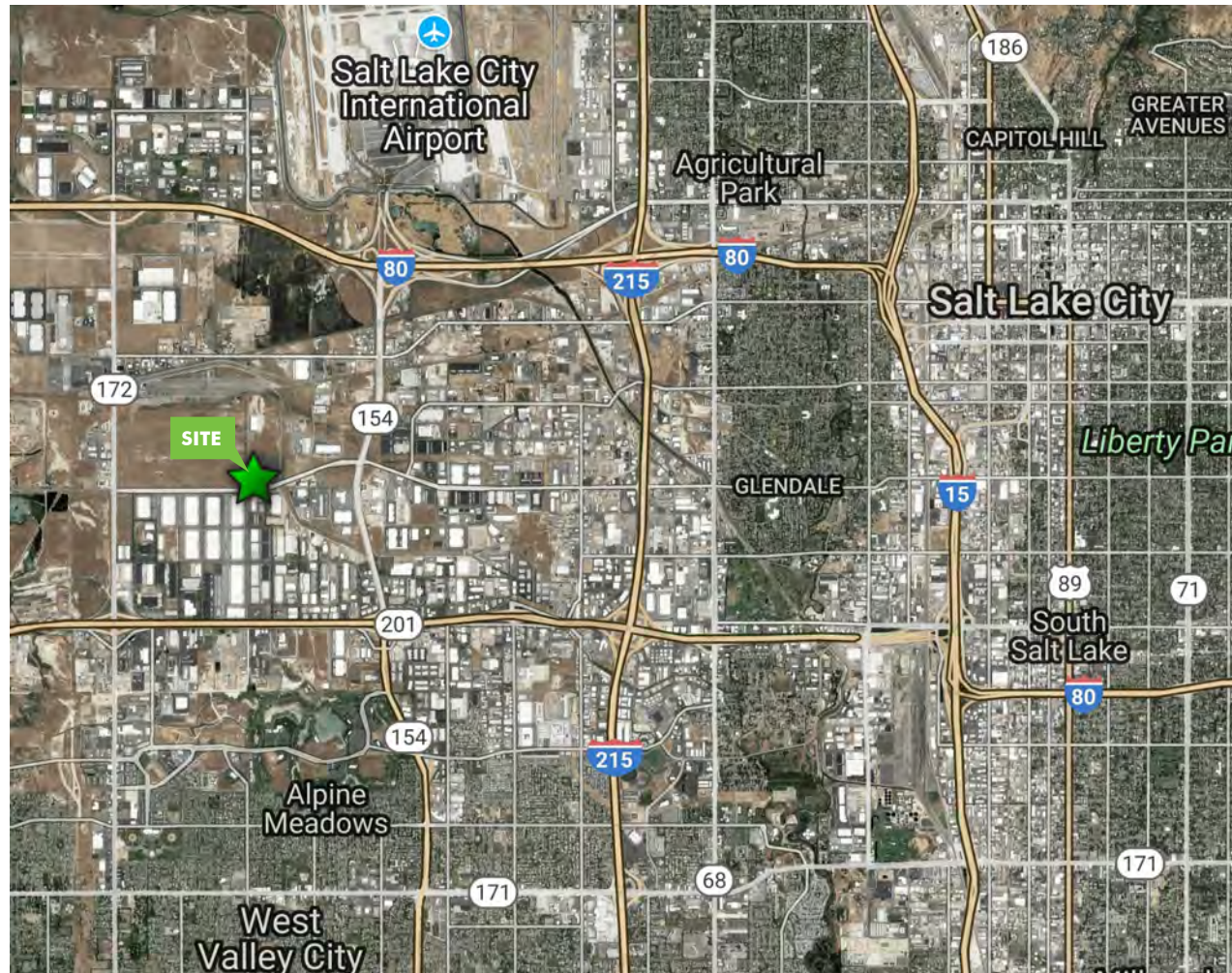


FOR LEASE  
**PACIFIC LANDING B**

4752 WEST CALIFORNIA AVENUE  
SALT LAKE CITY, UT 84104



**CONTACT US**

**CHRIS LIDDELL**

Senior Associate  
+1 801 869 8007  
chris.liddell@cbre.com

© 2017 CBRE, Inc. All rights reserved. This information has been obtained from sources believed reliable, but has not been verified for accuracy or completeness. You should conduct a careful, independent investigation of the property and verify all information. Any reliance on this information is solely at your own risk. CBRE and the CBRE logo are service marks of CBRE, Inc. All other marks displayed on this document are the property of their respective owners. Photos herein are the property of their respective owners. Use of these images without the express written consent of the owner is prohibited.

[www.cbre.com/saltlakecity](http://www.cbre.com/saltlakecity)

**CBRE**

FOR LEASE

**PACIFIC LANDING B**

SUITES 200 & 300  
4752 WEST CALIFORNIA AVENUE  
SALT LAKE CITY, UT 84104



**PROPERTY FEATURES**

- + Building Size: 67,000 sq. t. ft.
- + Total Available: 17,636 sq. ft.
- + **Suite 200:** 8,943 sq. ft.
  - Office: 4,500 sq. ft. (2,250 sq. ft. per level)
  - Warehouse: 4,443 sq. ft.
  - Loading:
    - » One (1) 10' x 10' dock high door
    - » One (1) 14' x 16' ground level door
- + **Suite 300:** 8,693 sq. ft.
  - Office: 2,000 sq. ft.
  - Warehouse: 6,693 sq. ft.
  - Loading:
    - » One (1) 10' x 10' dock high door
    - » One (1) 14' x 16' ground level door
- + Clear Height: 28'
- + Building Depth: 135.24'
- + Column Spacing: 45' x 48'5"
- + Lighting: High efficiency fluorescent
- + Power: 3 phase
- + Fire Suppression: ESFR
- + Truck Court: 180'
- + Zoning: M-1, Light Industrial
- + **Lease Rate:** \$0.60 PSF, Per Month, NNN

[www.cbre.com/saltlakecity](http://www.cbre.com/saltlakecity)

**CBRE**

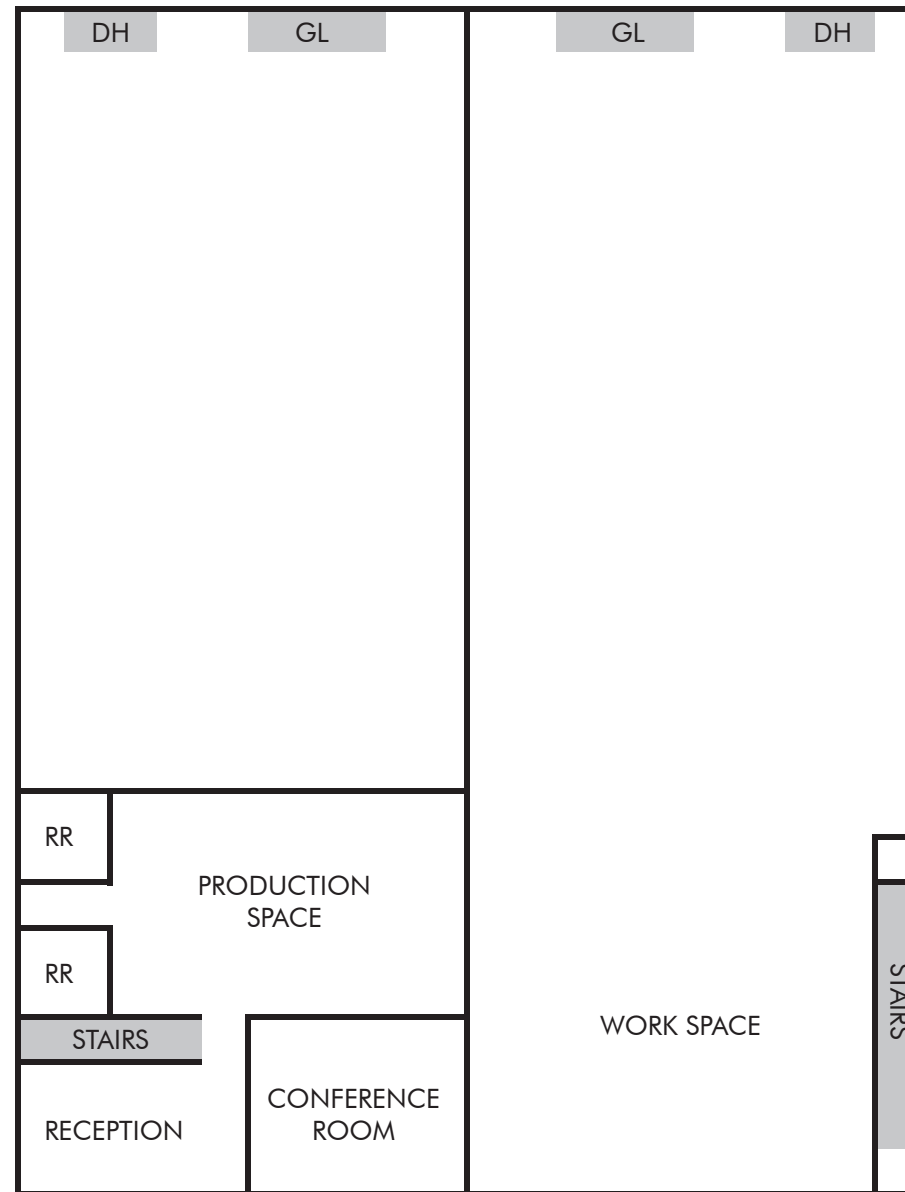
FOR LEASE  
**PACIFIC LANDING B**

SUITE 200 & 300  
 4752 WEST CALIFORNIA AVENUE  
 SALT LAKE CITY, UT 84104

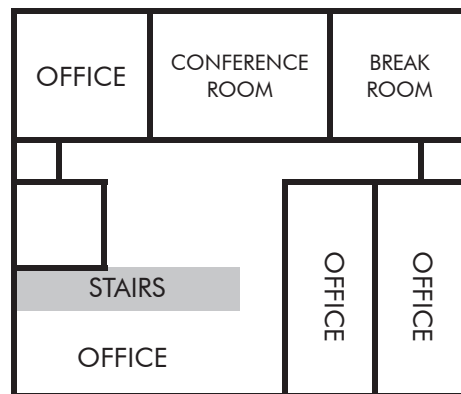


**SUITE 200**

**SUITE 300**



**SUITE 200 2ND FLOOR**



**SUITE 300 2ND FLOOR**

