

Brewery Block 2

THE PEARL DISTRICT'S PREMIER MIXED-USE DEVELOPMENT

www.breweryblocks.com



1120 NW COUCH STREET, PORTLAND, OR 97209

Jones Lang LaSalle Brokerage, Inc.

BUILDING DETAILS

IMAGE The most successful companies create a culture to recruit and retain the best talent

AMENITIES Restaurants, retail and services, entertainment, and housing options abound in this neighborhood

UNIQUE ARCHITECTURE Fusion of modern and historic elements with high-end improvements throughout

SUSTAINABILITY LEED-Certified Gold, providing enhanced working environment and increased productivity

ACCESS Close proximity to freeway system and public transportation provides the ultimate in convenience

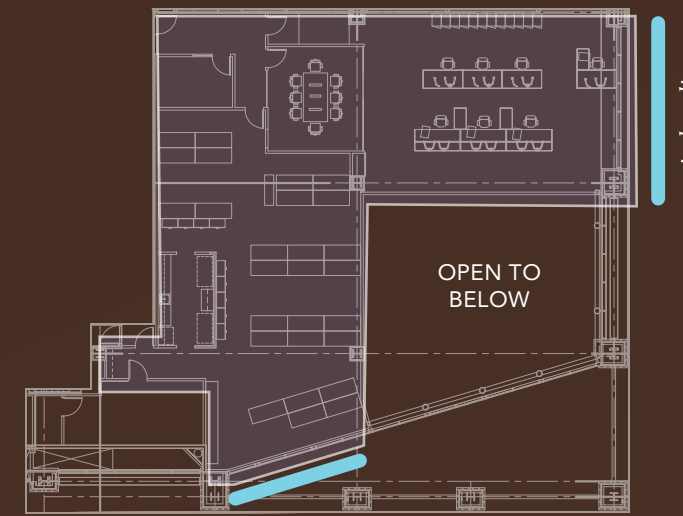
PARKING Largest underground facility in Portland, including secured bicycle parking with showers and lockers

OWNERSHIP Experienced and resourceful with the financial capacity to perform



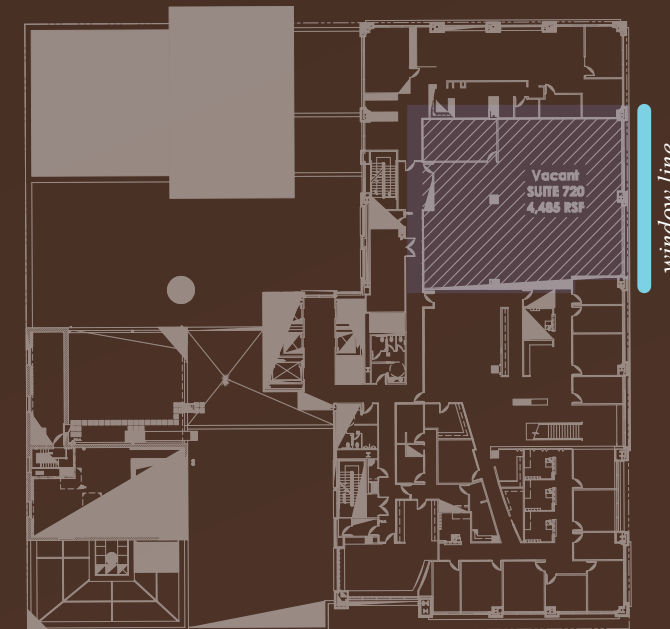
FLOOR PLANS

2ND FLOOR :: 4,646 RSF

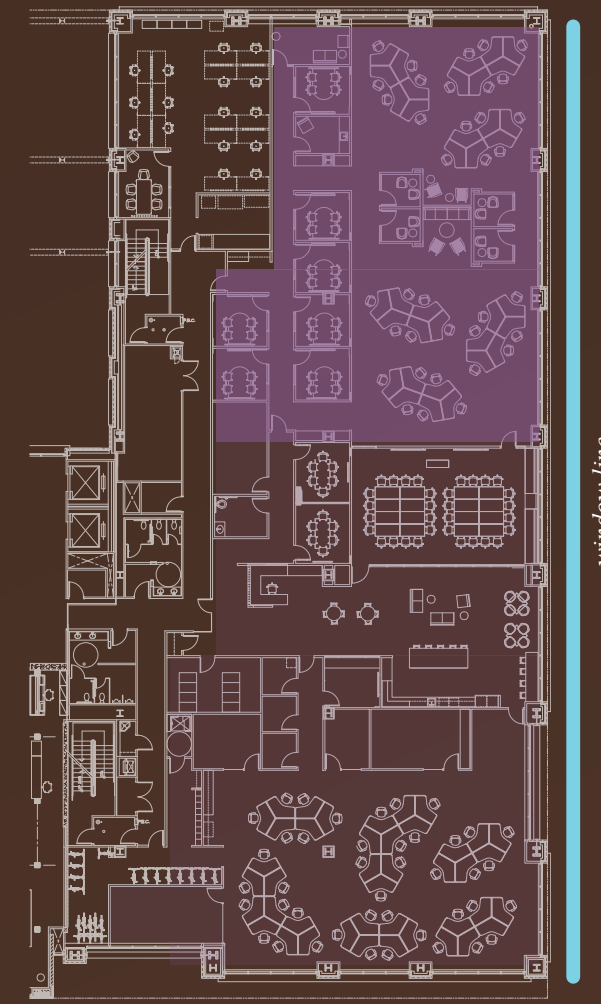


7TH FLOOR :: 4,537 RSF

Unobstructed eastern views.



window line



window line

3RD FLOOR :: 15,541 RSF Di- visible to 6,136 RSF (north half) and 9,315 RSF (south)

Plug and play oppourtunity, furniture can remain in place
Exposed ceiling creative build-out w/13'6 exposed ceilings



Fitwel®
Viral Response
Certified

HEALTH & WELLNESS

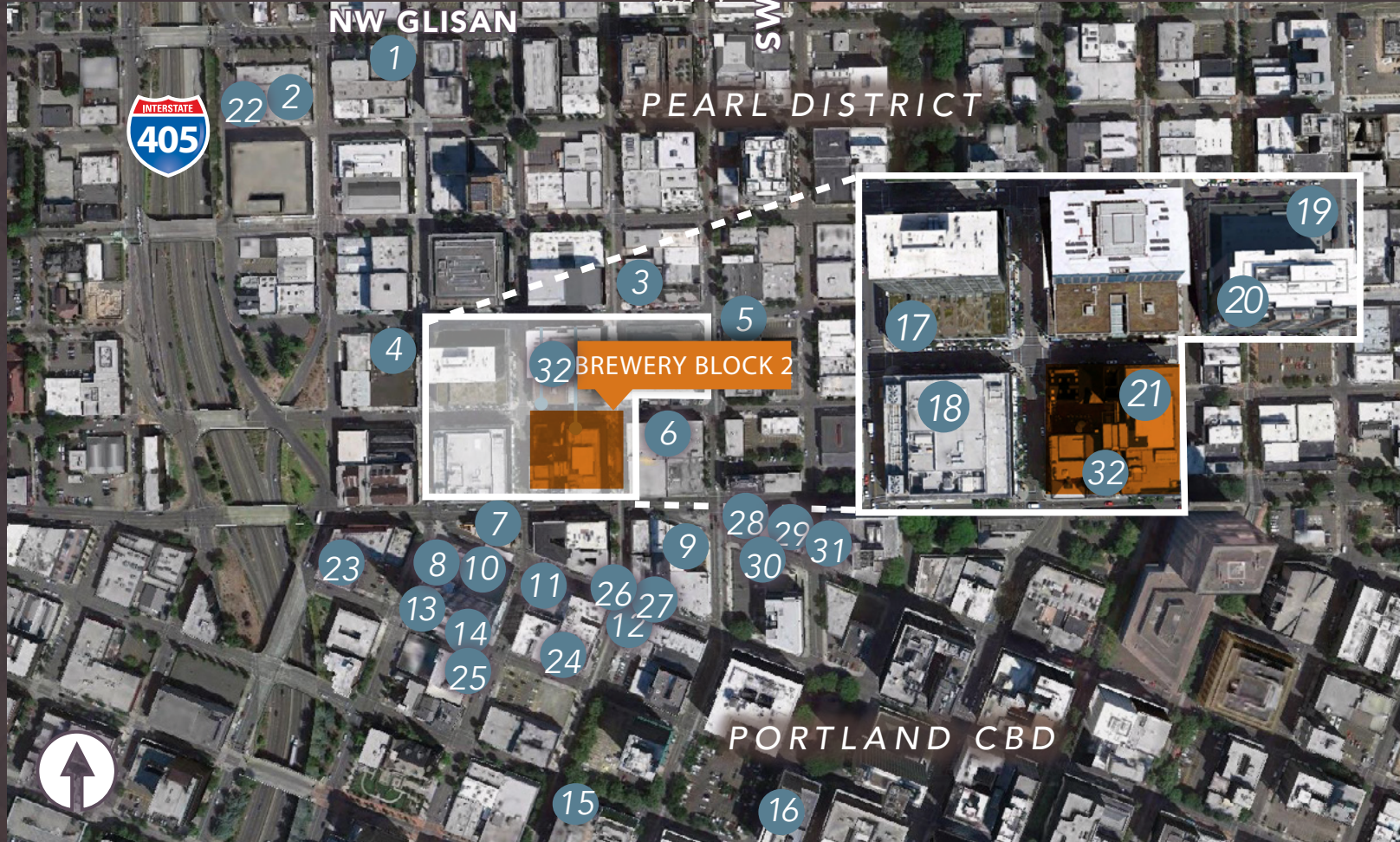
Brewery Block II is Viral Response Approved from the Center for Active Design, reflecting our deep committment to develop, operate, maintain, and optimize our buildings for human health.



SUSTAINABLE INTERIORS

Brewery Block 2 features a program to make earning LEED CI easily attainable

Make LEED CI certification a simple addition to your fit-out process



Amenities Include:

- | | | |
|---------------------------|------------------------|-------------------|
| 1 ANDINA | 14 LARDO | 27 STUMPTOWN |
| 2 10 BARRELL BREWERY | 15 THE SENTINEL HOTEL | 28 SIZZLE PIE |
| 3 DESCHUTES BREWERY | 16 ABIGAIL HALL | 29 MAURICE |
| 4 VON EBERT BREWERY | 17 CHASE BANK | 30 COURIER COFFEE |
| 5 LITTLE BIG BURGER | 18 WHOLE FOODS MARKET | 31 THAI PEACCK |
| 6 POWELL'S BOOKS | 19 THE GERDING THEATER | 32 SCREEN DOOR |
| 7 CRYSTAL HOTEL | 20 STARBUCKS | |
| 8 MASU SUSHI | 21 PEET'S COFFEE & TEA | |
| 9 UNION WAY | 22 KHAO SAN | |
| 10 JAKE'S FAMOUS CRAWFISH | 23 NONG'S | |
| 11 BAMBOO SUSHI | 24 HEART COFFEE | |
| 12 ACE HOTEL | 25 BEER O'CLOCK | |
| 13 GRASSA | 26 KENNY & ZUKES | |



Eric Haskins, LEED Green Associate
 +1 503 972-8611
 eric.haskins@am.jll.com
 Licensed in Oregon

