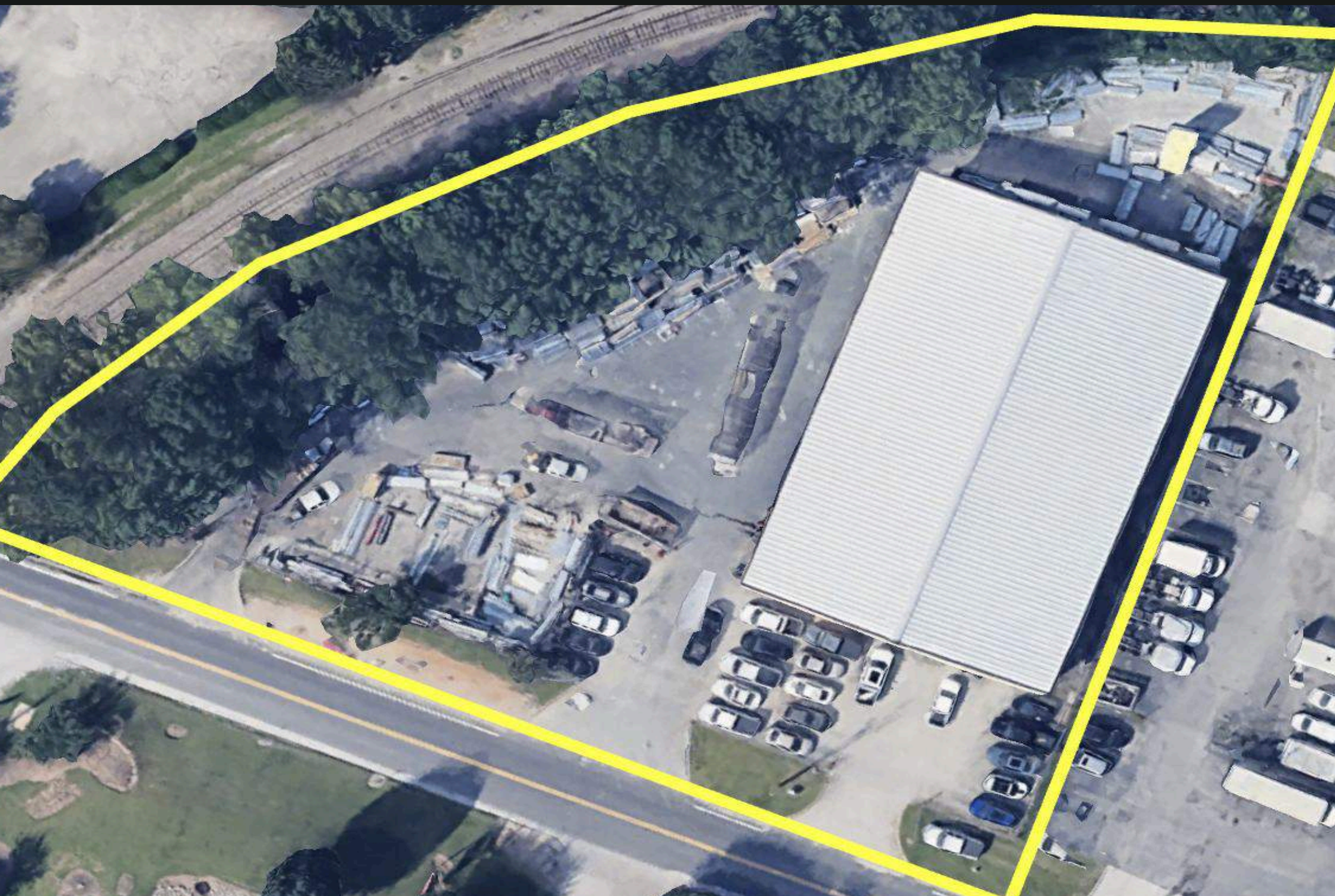


15,000 SF WITH OUTSIDE STORAGE, SHOWROOM AND SALES COUNTER IN DORAVILLE





OXBOWRE.COM
404.275.5794
ATLANTA, GA



**2394 Weaver Way
Doraville, GA, 30340**

-  +/- 15,000 SF total
-  Showroom/Counter Area: +/- 1,200 SF
-  Office +/- 1,800 SF

Property Details:

-  1 16 x 16 oversize grade level door
-  Ceiling Height 18.5-27'
-  Over 1 acre Concrete Yard
-  3 driveways provide access to the site

RACHEL CONDON
PARTNER

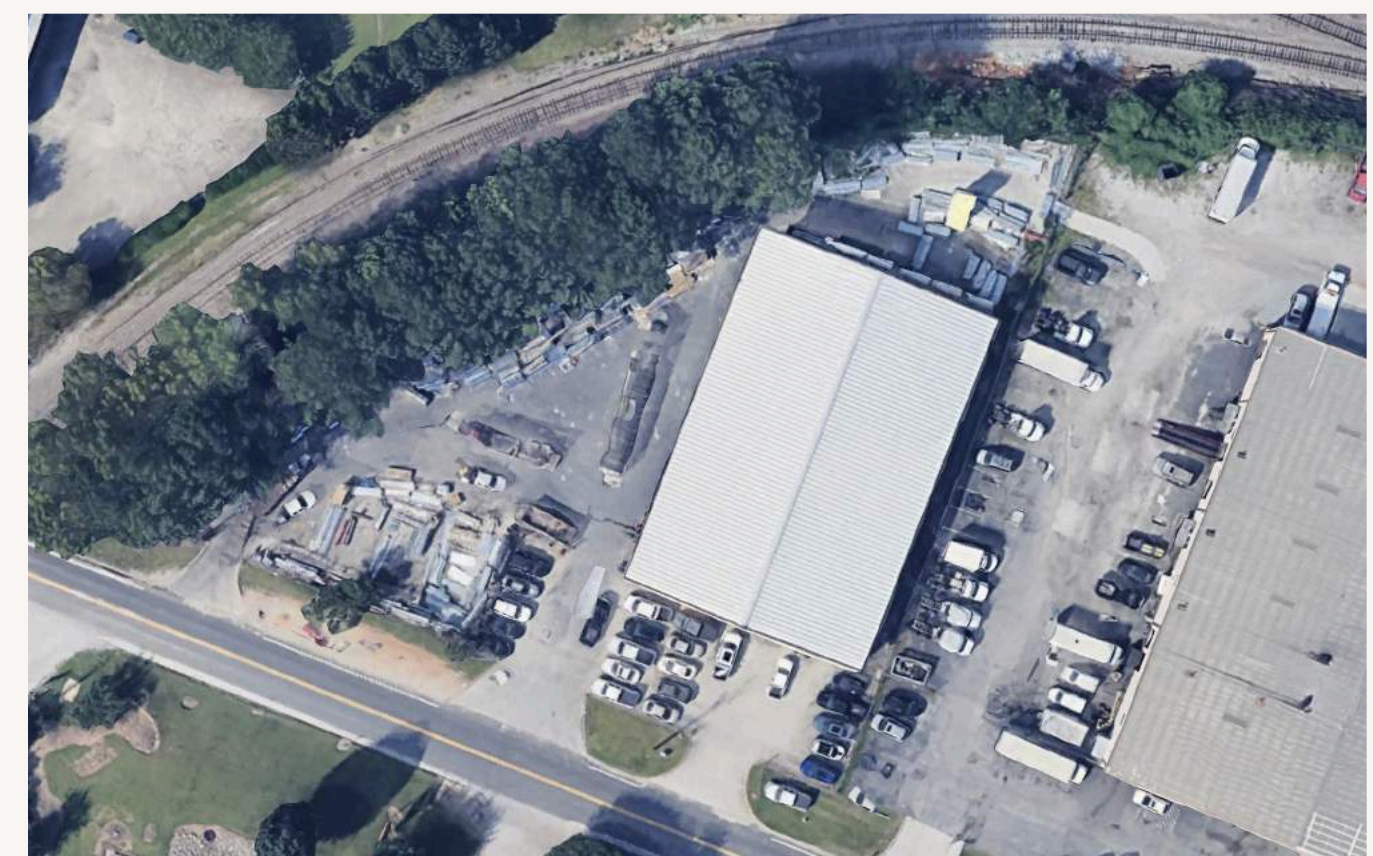
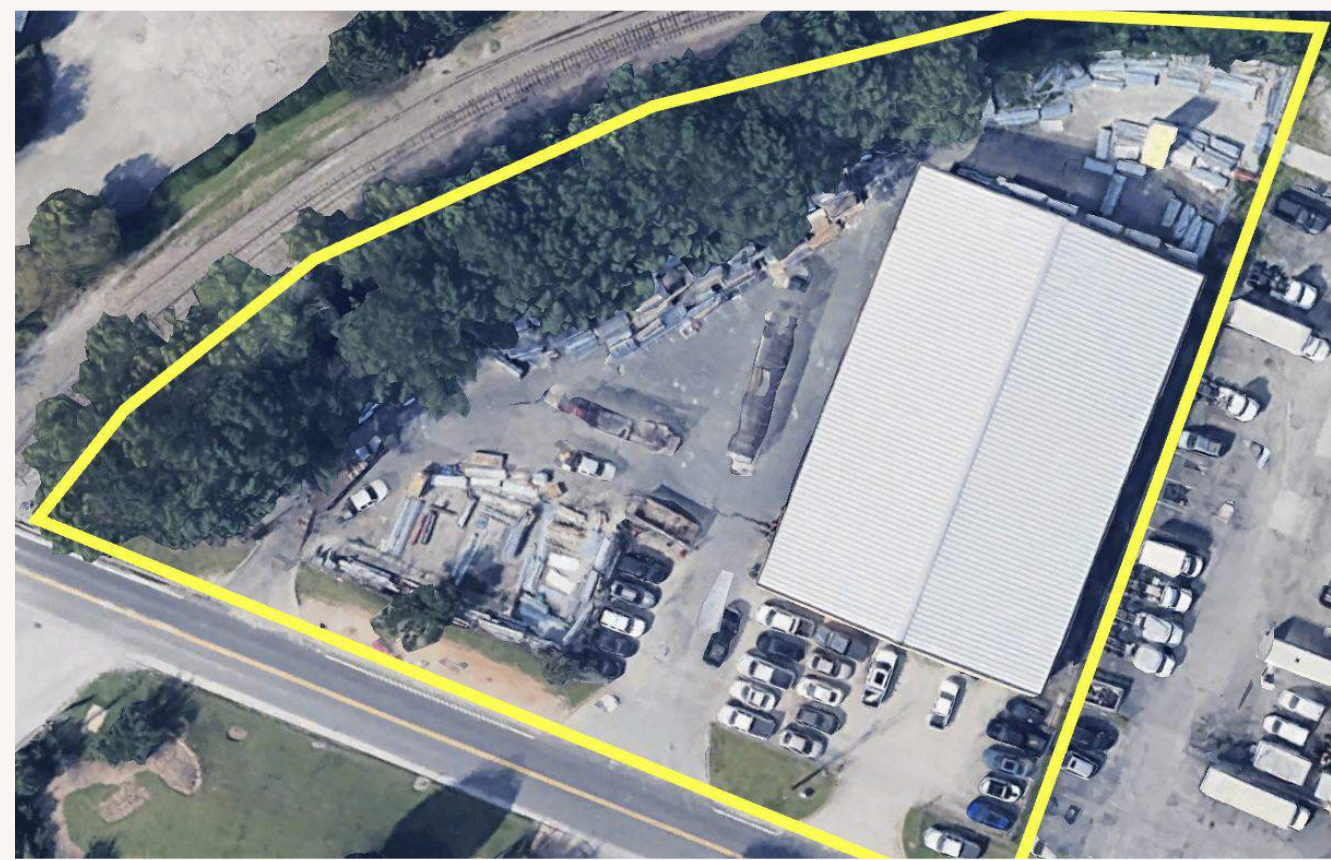
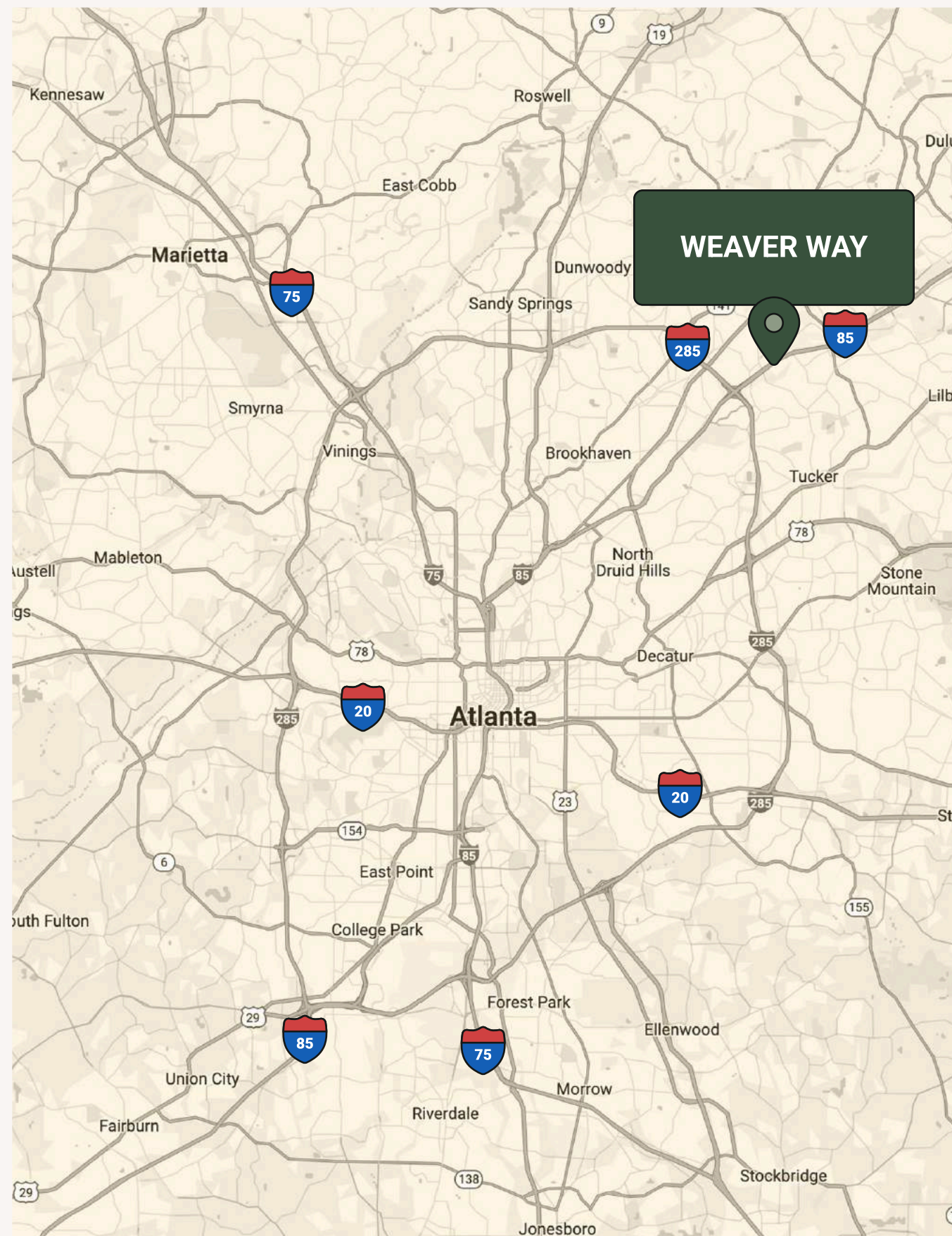
404.275.5794
rcondon@oxbowre.com

WILL ALLIGOOD
PARTNER

404.550.8291
walligood@oxbowre.com

15,000 SF WITH OUTSIDE STORAGE, SHOWROOM AND SALES COUNTER IN DORAVILLE

OXBOWRE.COM
404.275.5794
ATLANTA, GA



RACHEL CONDON
PARTNER
404.275.5794
rcondon@oxbowre.com

WILL ALLIGOOD
PARTNER
404.550.8291
walligood@oxbowre.com



©2024 OXBOW REAL ESTATE. ALL INFORMATION FURNISHED REGARDING PROPERTY FOR SALE, RENTAL OR FINANCING IS FROM SOURCES DEEMED RELIABLE, BUT NO WARRANTY OR REPRESENTATION IS MADE TO THE ACCURACY THEREOF AND SAME IS SUBMITTED TO ERRORS, OMISSIONS, CHANGE OF PRICE, RENTAL OR OTHER CONDITIONS PRIOR TO SALE, LEASE OR FINANCING OR WITHDRAWAL WITHOUT NOTICE. NO LIABILITY OF ANY KIND IS TO BE IMPOSED ON THE BROKER HEREIN.