



M E R I D I A N

147 S. CHERRY STREET, SUITE 200 | WINSTON-SALEM, NC 27101 | P 336.722.1986 | F 336.723.3173

# Stratford Executive Park

1100 S. Stratford Road Winston-Salem, NC 27103

1,941 – 4,309± SF



Prime office location convenient to Forsyth and Baptist hospitals, major retail, and residential areas. Ample parking and great visibility. Renovated in 2012 and 2018.

For More Information:

**John L. Ruffin, CCIM**

Jruffin@meridianrealty.com

336.480.2081

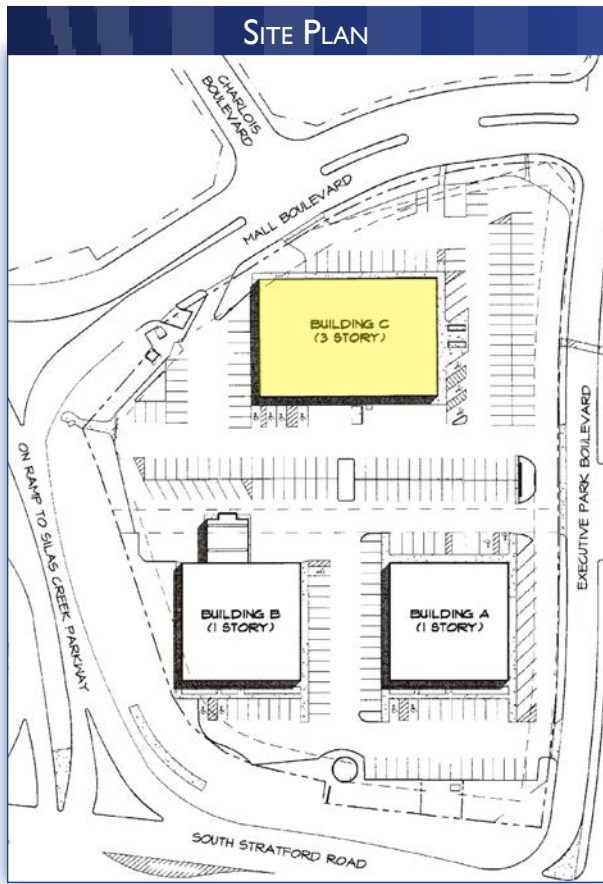
**Spencer T. Bennett, CCIM**

Spencer@meridianrealty.com

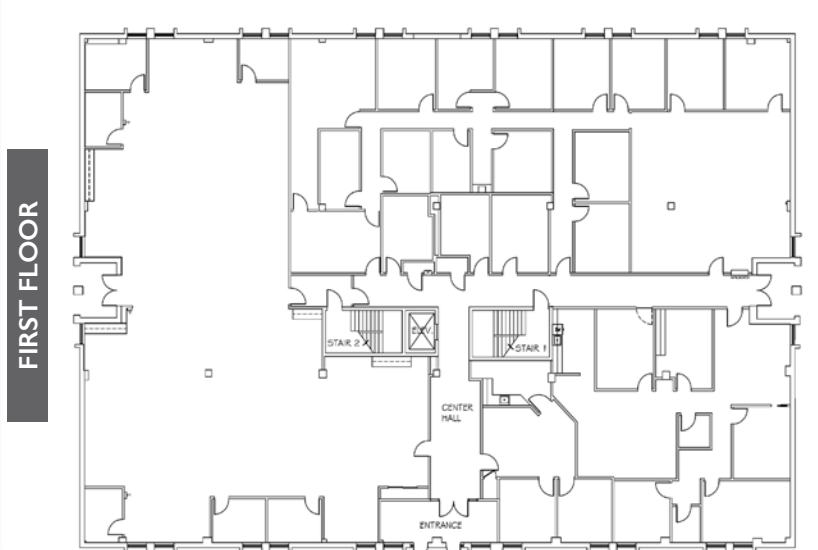
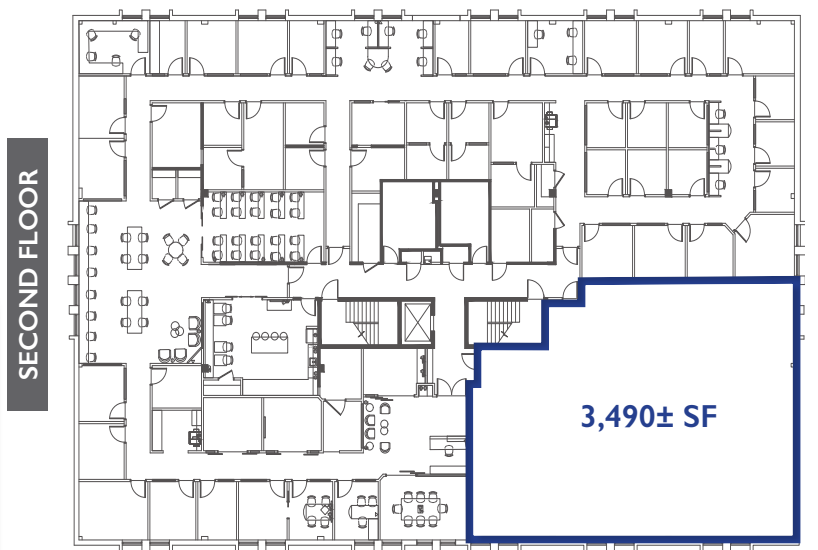
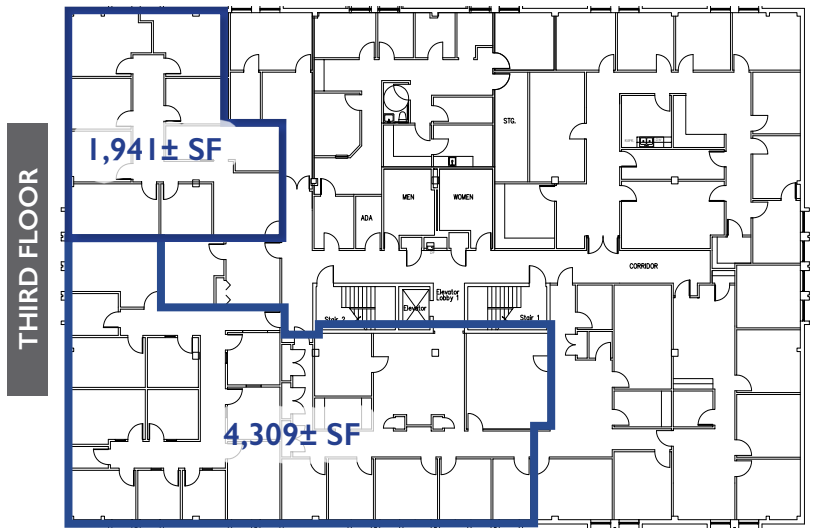
336.480.2327

**FOR LEASE: \$17.00 PSF**

WWW.MERIDIANREALTY.COM



FLOOR PLANS

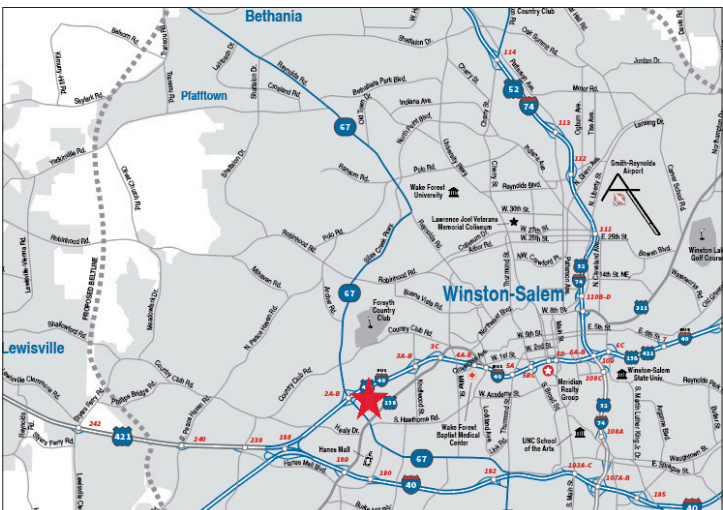


- Prime office location
- Zoned GO for office and medical use
- Easy access to Silas Creek Parkway and Salem Parkway
- Close to banks, restaurants, hotels, and Forsyth Hospital
- Efficient layouts
- Full service lease
- Lease Rate: \$17.00 PSF

IMAGES

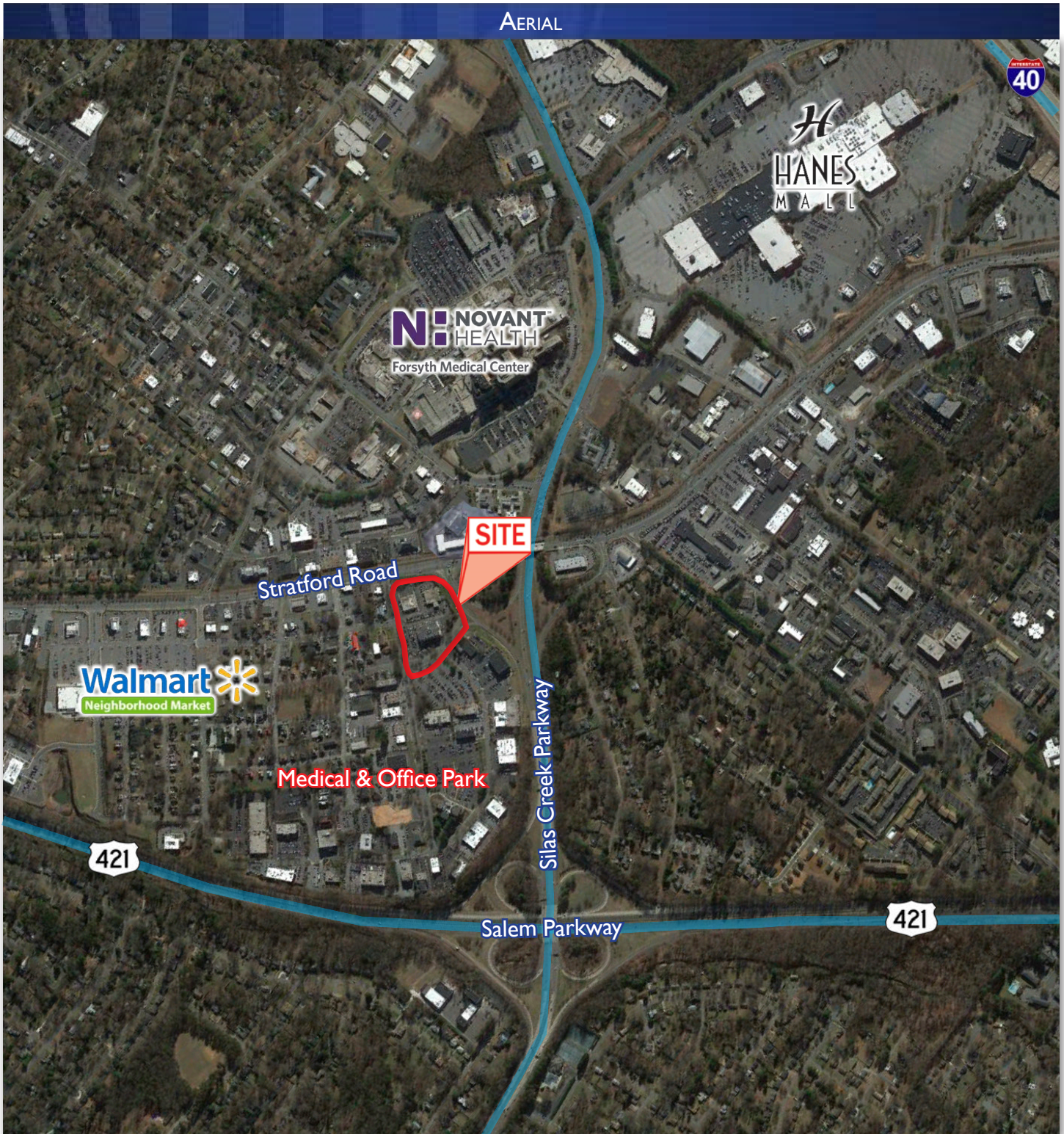


MAPS



# Stratford Executive Park | 1100 S. Stratford Road Winston-Salem, NC 27103

AERIAL



No warranty or representation (express or implied) is made as to the accuracy or completeness of the information set forth herein. All information is submitted subject to errors, omissions, change of price, prior lease or sale, and withdrawal without notice. All marketing material produced by the Meridian Realty Group is proprietary. Any reproduction is expressly prohibited.



THE MERIDIAN REALTY GROUP | 147 S. CHERRY STREET, SUITE 200 | WINSTON-SALEM, NC 27101  
P 336.722.1986 | F 336.723.3173

[WWW.MERIDIANREALTY.COM](http://WWW.MERIDIANREALTY.COM)