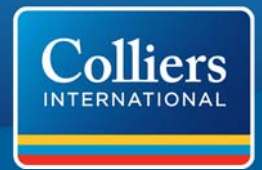


AVAILABLE FOR SUBLEASE Ceres Industrial Park



2400 Rockefeller Drive, Unit 100 & 200 • Ceres, CA



Sublease Rate: \$.50 PSF, Gross
SUBLEASE EXPIRES 4/30/2020

PROPERTY HIGHLIGHTS:

- **Available Sq. Ft. :** ±12,915 Sq. Ft.
- **Office:** Six (6) private offices, two (2) restrooms, including reception, bullpen area
- **Grade Level Doors:** Four (4), (12' X 14')
- **Clear Height:** ±17.5' - ±19.5'
- **Column Spacing:** 52' x 25', typical
- **Parking:** Twelve (12) parking stalls
- **Warehouse Lighting:** Metal Halide
- **Power - 2 Panels:** 200 Amps, 208/120 Volts, 3 Phase
150 Amps, 208/120 Volts, 3 Phase
- **Construction Type:** Concrete tilt-up
- **Partially insulated**



INDUSTRIAL SERVICES TEAM - EXCLUSIVE BROKERS:

WES WIDMER
Senior Vice President
+1 209 475 5109
wes.widmer@colliers.com
CA License No. 01315686

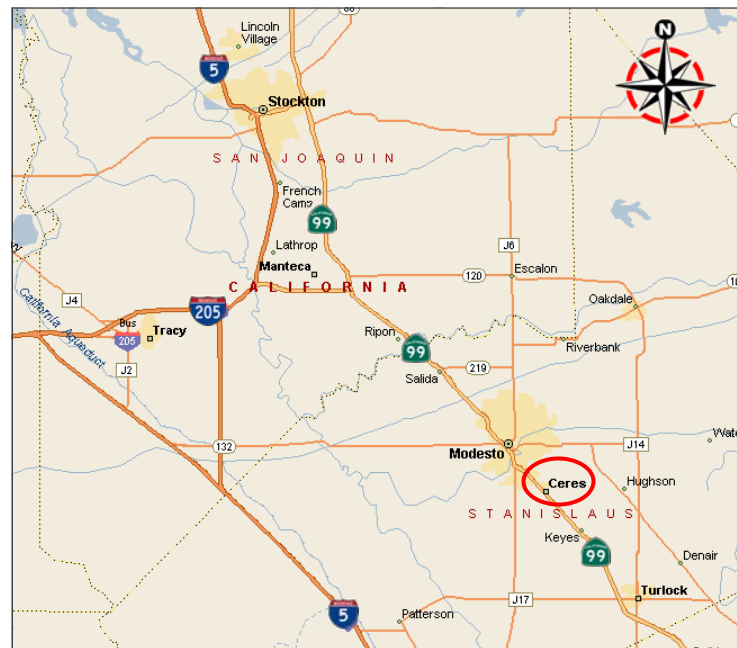
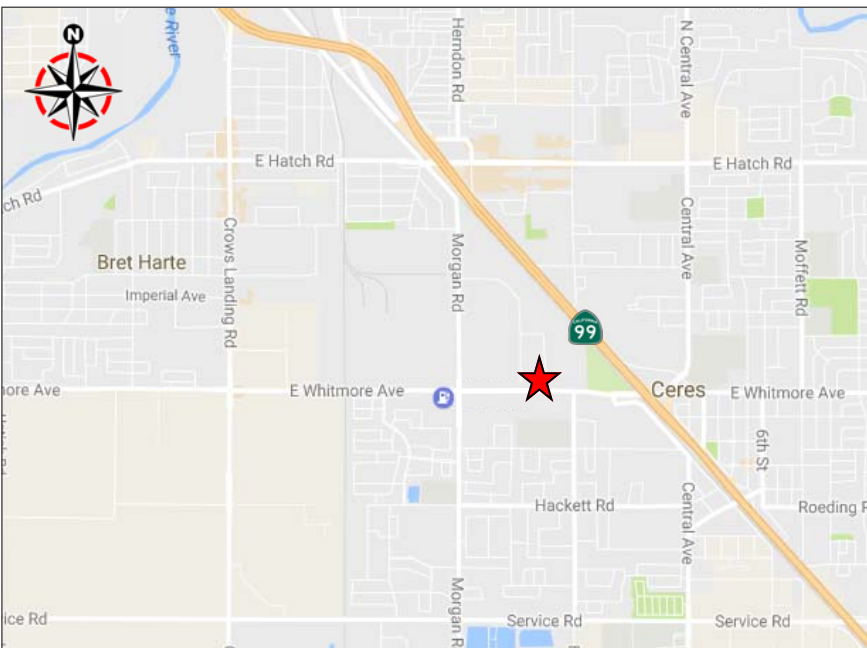
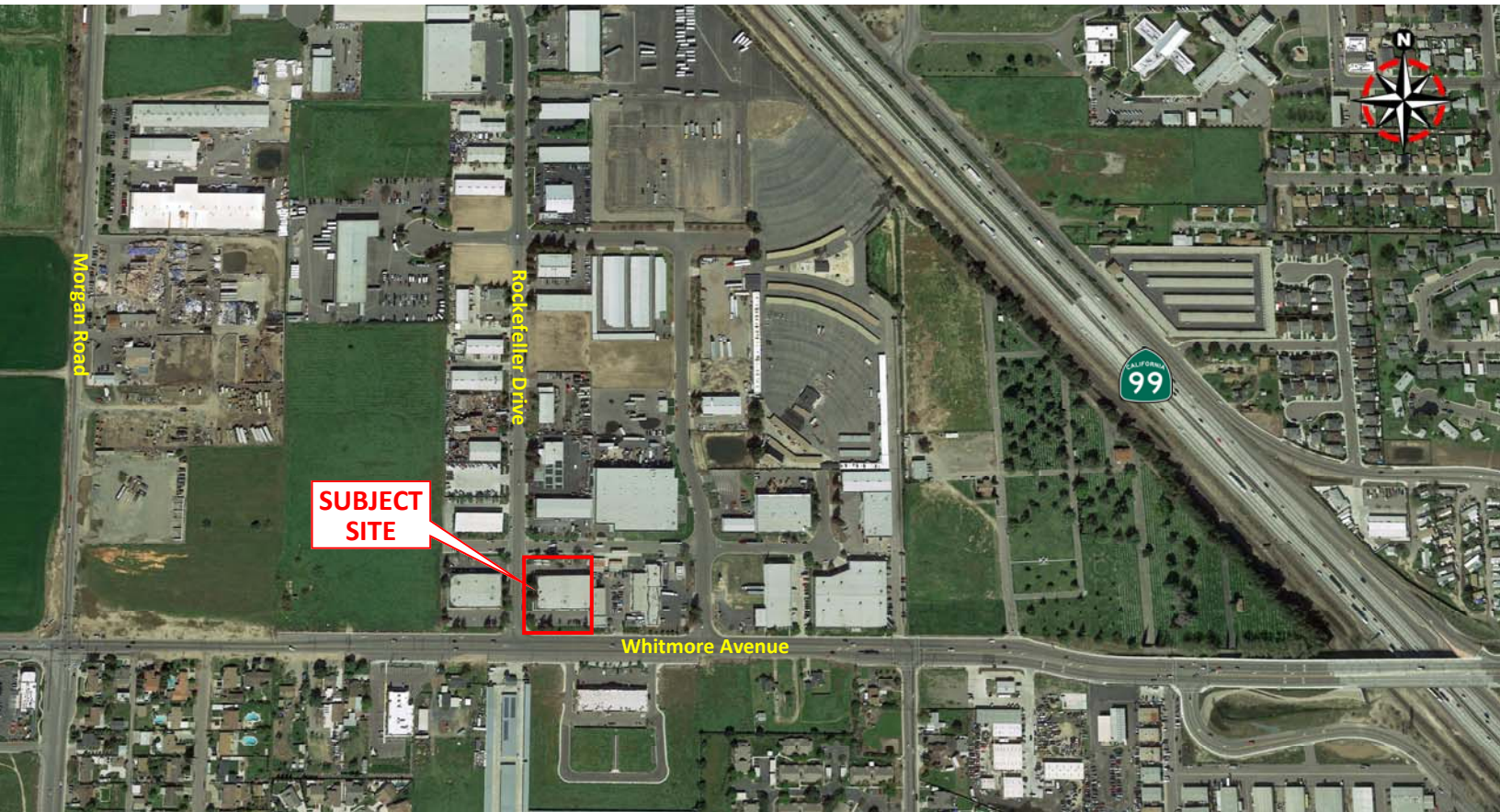
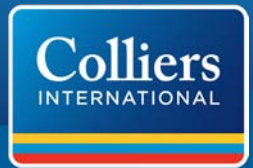
MIKE GOLDSTEIN, SIOR
Executive Managing Director
+1 209 475 5106
michael.goldstein@colliers.com
CA License No. 01319234

ALEX HOECK
Associate
+1 209 475 5107
alex.hoeck@colliers.com
CA License No. 01943853

COLLIERS INTERNATIONAL
3439 Brookside Road, Suite 108
Stockton, CA USA 95219
www.colliers.com

AVAILABLE FOR SUBLEASE Ceres Industrial Park

2400 Rockefeller Drive, Unit 100 & 200 • Ceres, CA



INDUSTRIAL SERVICES TEAM - EXCLUSIVE BROKERS:

WES WIDMER
Senior Vice President
+1 209 475 5109
wes.widmer@colliers.com
CA License No. 01315686

MIKE GOLDSTEIN, SIOR
Executive Managing Director
+1 209 475 5106
michael.goldstein@colliers.com
CA License No. 01319234

ALEX HOECK
Associate
+1 209 475 5107
alex.hoek@colliers.com
CA License No. 01943853

COLLIERS INTERNATIONAL
3439 Brookside Road, Suite 108
Stockton, CA USA 95219
www.colliers.com