

FOR SUBLEASE

BRIGHTLEAF SQUARE

Up to 39,781 RSF

JEFF MILLER

jmiller@davismoorehealthcare.com

919.368.0343

MAGGIE CLOUGHERTY

mclougherty@davismoorehealthcare.com

919.349.7738

KRISTINE MEEKS

kmeeks@davismoorehealthcare.com

252.902.6446

BRIGHTLEAF SQUARE

905 W Main Street, Durham, NC 27701

North Building - Estimated 18,000 RSF
(includes 2,976 RSF space available 10/1/2025)

South Building - 21,781 RSF

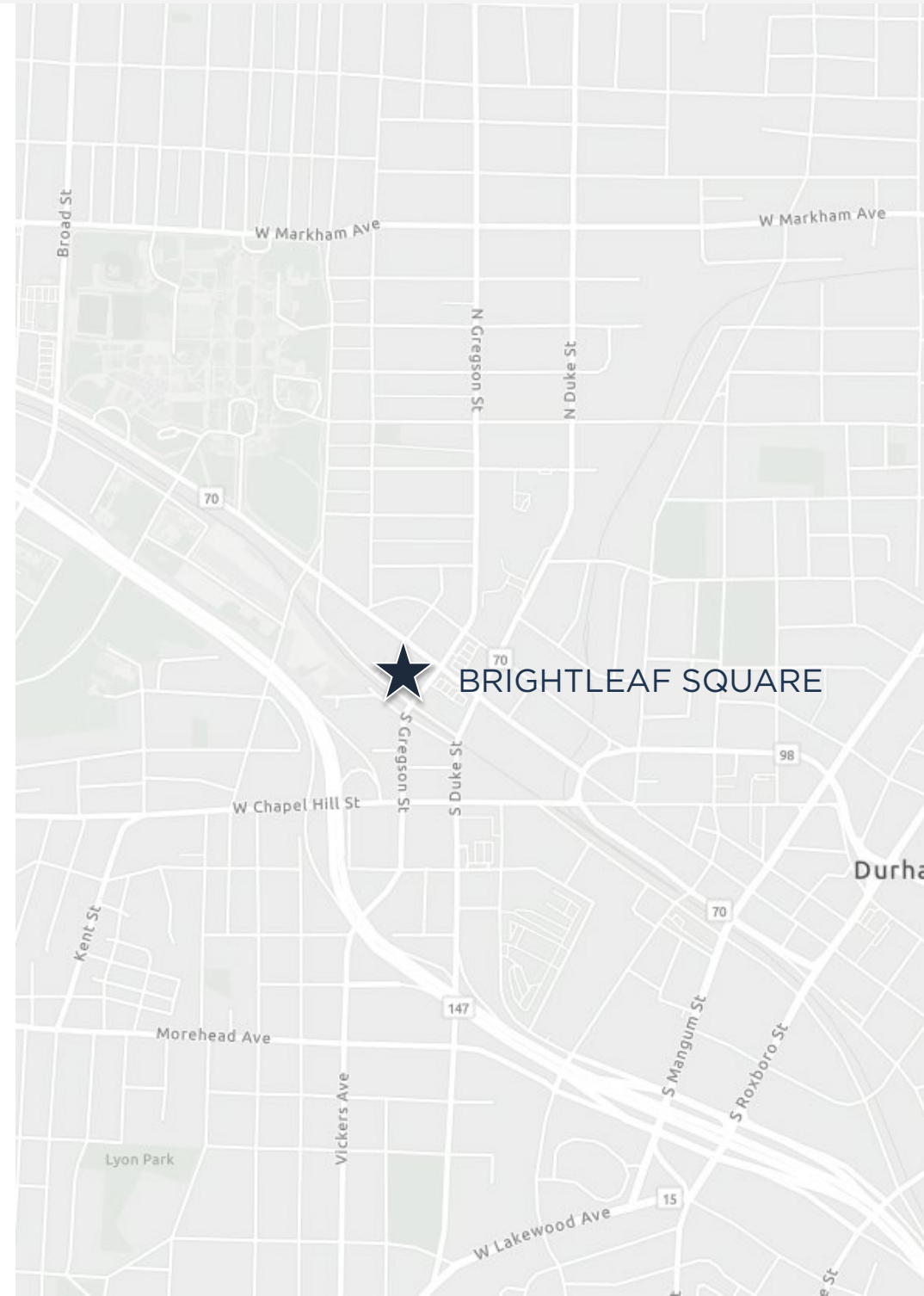
Parking: 3.00/1,000

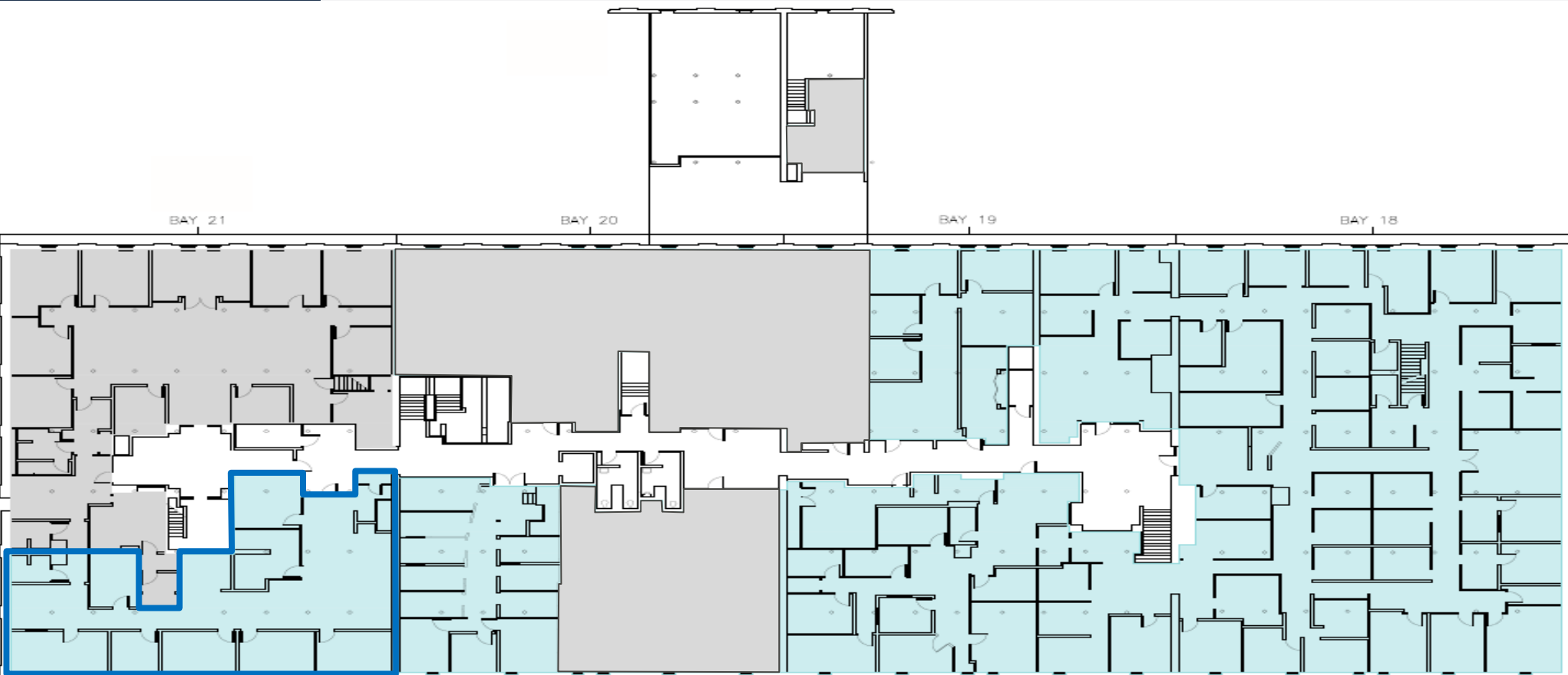
Rate: Negotiable

Master Lease Expiration: July 31, 2030

Amenities:

- Conveniently located in Downtown Durham
- Walking distance to hotels, dining and entertainment.
- Restaurants & shopping located on site
- Large courtyard
- Minutes from I-147 and I-40 for easy access to all major highways





2,976 RSF - Available 10/1/2025

NORTH BUILDING: Estimated 18,000 RSF (including 2,976 RSF space)





SOUTH BUILDING: 21,781 RSF





JEFF MILLER

jmiller@davismoorehealthcare.com

919.368.0343

MAGGIE CLOUGHERTY

mclougherty@davismoorehealthcare.com

919.349.7738

KRISTINE MEEKS

kmeeks@davismoorecapital.com

252.902.6446