

CORPORATE LAKES

# Class A Office Space for Lease

2300 CABOT DRIVE | LISLE, ILLINOIS



**Adam Johnson**  
630 317 0729  
ajohnson@hiffman.com

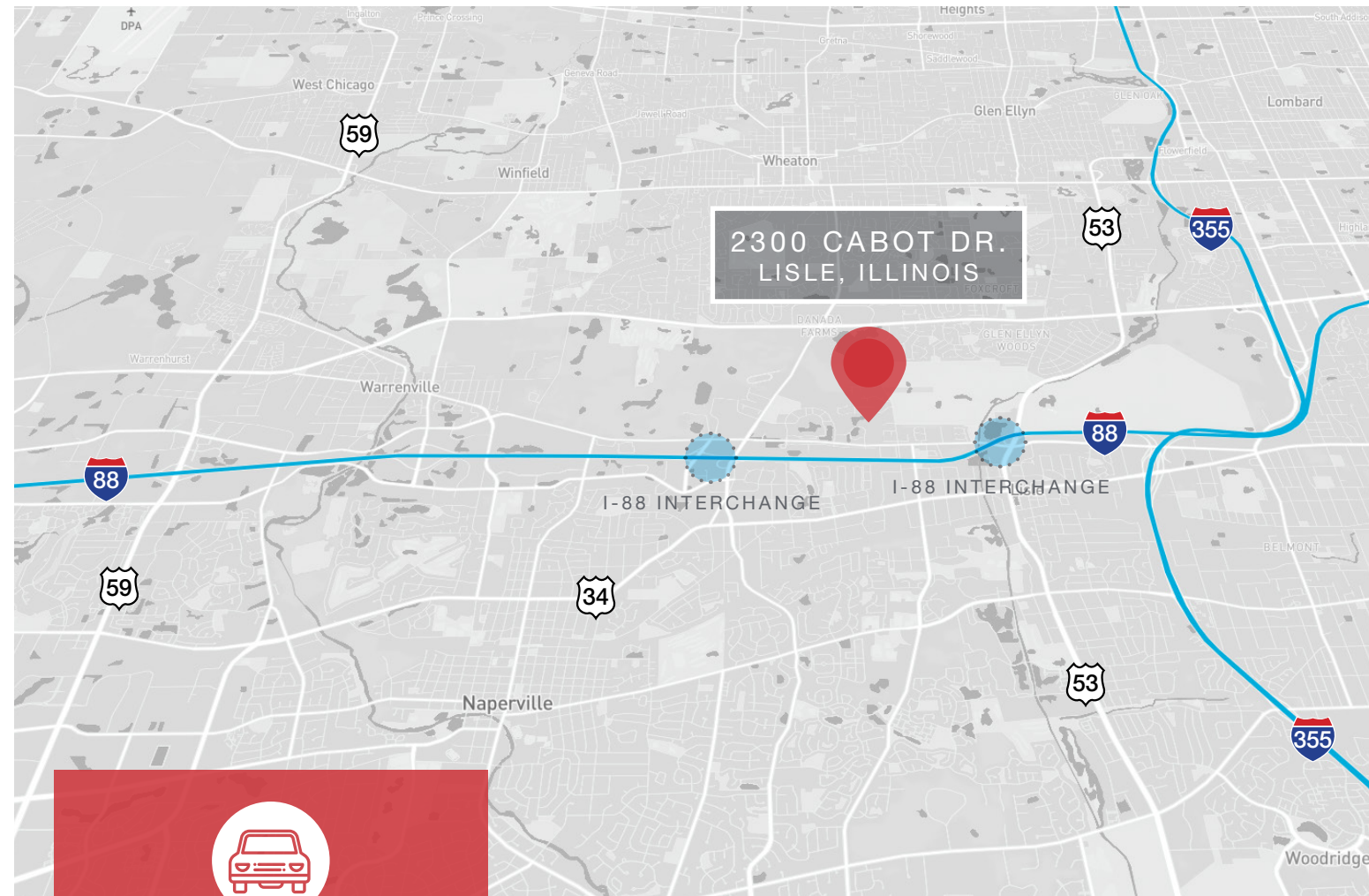
**Dan O'Neill**  
630 693 0610  
doneill@hiffman.com

**Tom Gnadt**  
630 693 0659  
tgnadt@hiffman.com





LOBBY



2300 CABOT DR.  
LISLE, ILLINOIS

  
**4.6:1,000**  
PARKING RATIO  
(EXECUTIVE & FREE  
COVERED PARKING)

  
**1K to 21K<sup>SF</sup>**  
AVAILABILITIES

  
**On-Site**  
FOOD SERVICE &  
ENGINEER







# Flexible Suite Opportunities

AVAILABILITIES TO MATCH ANY NEED

Situated within the highly desirable Lisle Corporate Lakes office park, 2300 Cabot Drive offers Class A finishes in a tranquil corporate campus setting.

## PROPERTY HIGHLIGHTS

- Covered parking
- Heated executive garage
- 4.6/1,000 parking ratio
- On-site building engineer
- Full-service deli & vending area
- Beautiful two-story atrium
- Newly remodeled bathrooms & corridors
- New building conference center
- Spec suites available
- Easy access to I-88 & I-355 via Rte 53 & Naperville Rd.
- WELL Health-Safety Rated



**\$2.61**  
PSF TAXES

**\$14.25/SF N**  
ASKING RENT

**\$8.14**  
PSF CAM



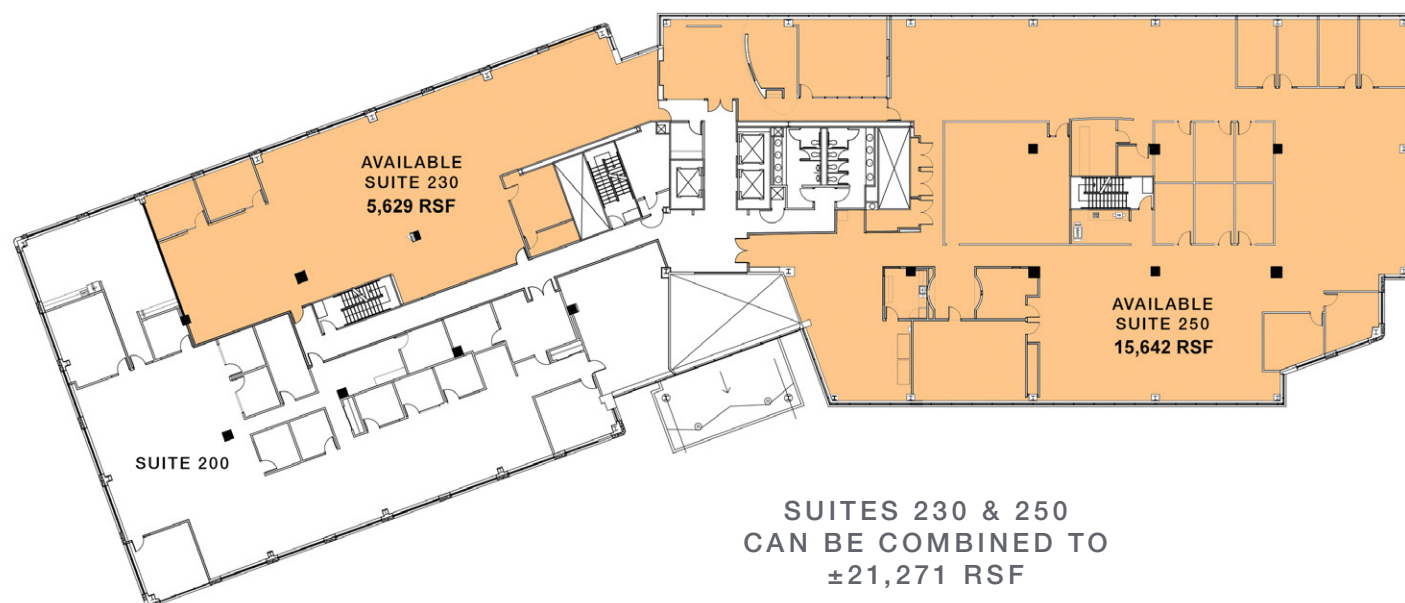


# 2300 CABOT DRIVE Available Space

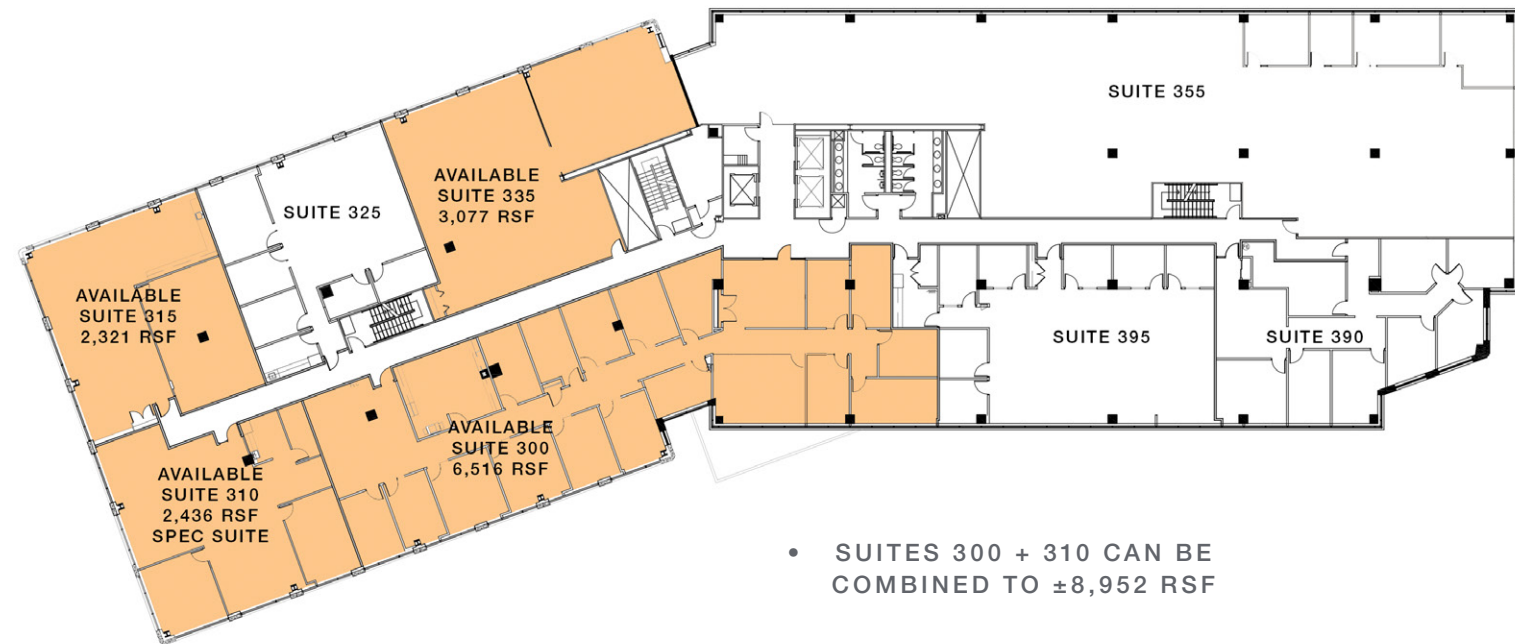
**FIRST FLOOR**  
2,682 - 8,064 SF



**SECOND FLOOR**  
5,629 - 21,271 SF

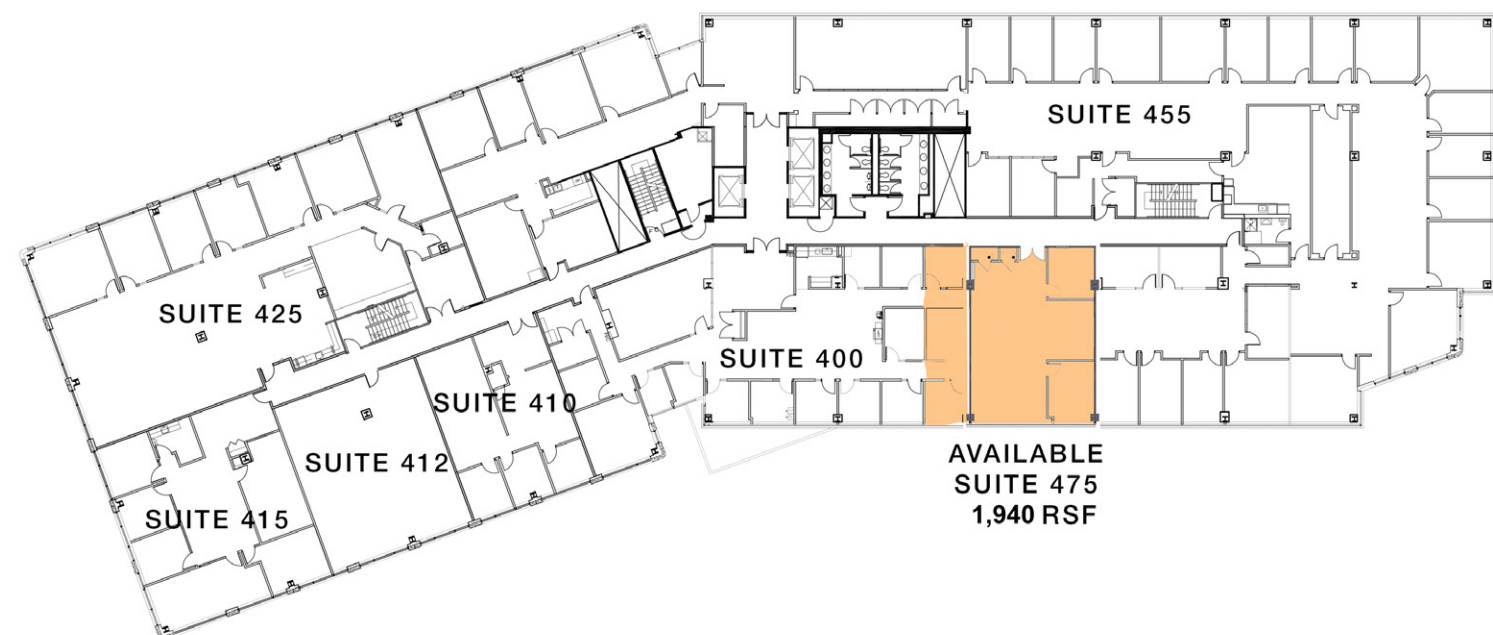


**THIRD FLOOR**  
2,321 - 11,273 SF



- SUITES 300 + 310 CAN BE COMBINED TO ±8,952 RSF
- SUITES 300, 310 + 315 CAN BE COMBINED TO ±11,273 RSF

**FOURTH FLOOR**  
1,895 SF





2300 CABOT DRIVE | LISLE, ILLINOIS

# Up to 21,271 SF of Contiguous Space Available

**Adam Johnson**

630 317 0729

ajohnson@hiffman.com

**Dan O'Neill**

630 693 0610

doneill@hiffman.com

**Tom Gnadt**

630 693 0659

tgnadt@hiffman.com

MANAGED AND OWNED BY

**BRIDGE  
COMMERCIAL  
REAL ESTATE**

**BRIDGE  
INVESTMENT  
GROUP**

[PROPERTY WEBSITE](#)