



2389 | **GATEWAY OAKS DRIVE**
SACRAMENTO, CA

Partnership. Performance.



For more information on this property, please contact exclusive agents:

Tom Aguer, CCIM SIOR

916.563.7827

tom.aguer@avisonyoung.com

CA DRE #00481113

Matt Havelock, CCIM SIOR

916.563.7667

matt.havelock@avisonyoung.com

CA DRE #00930194

HIGHLIGHTS

- Approximately 5,886 RSF Available
- 2nd floor space
- Negotiable Tenant Improvements
- Excellent Freeway Access to I-5 and I-80

AMENITIES

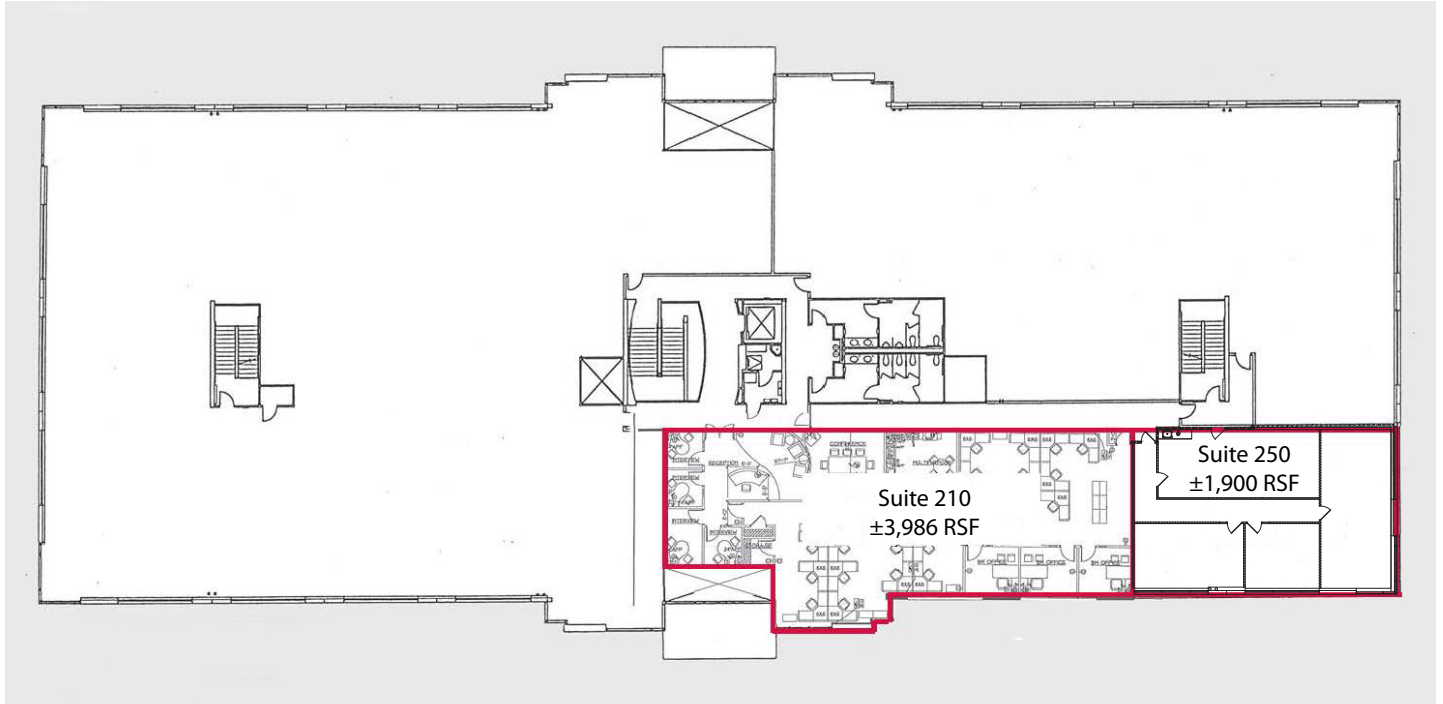
- Campus Environment
- Shower & Locker Facilities
- Bicycle Lockers
- Expansive Two-Story Lobbies
- Outdoor Seating
- Close proximity to lodging, health club, shopping, banking, restaurants, & child care facilities



Second Floor Available Suites

Suite 210: ±3,986 RSF

Suite 250: ±1,900 RSF



*Floor plan not to scale

NATOMAS GATEWAY CORPORATE CENTER

2389 GATEWAY OAKS DRIVE, SACRAMENTO, CA

AMENITIES

Walking distance and within blocks of a variety of restaurants, including:



Tom Aguer, CCIM SIOR
916.563.7827
tom.aguer@avisonyoung.com
CA DRE #00481113

Matt Havelock, CCIM SIOR
916.563.7667
matt.havelock@avisonyoung.com
CA DRE #00930194