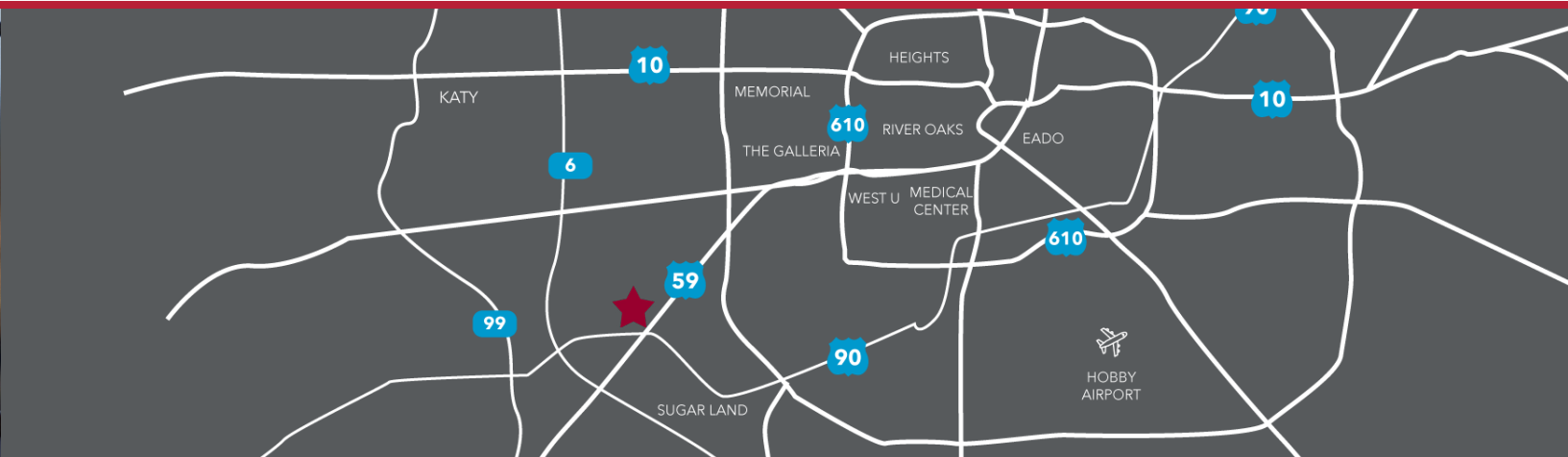




S  
L  
P

SUGAR LAND  
PLAZA





# 12946 DAIRY ASHFORD

64,773 SF OFFICE BUILDING

464 SF - 2,660 SF AVAILABLE

3/1,000 SF PARKING RATIO

LEASE RATE: \$21.50 PSF/YR (GROSS)

OPEX: \$9.96 PSF/YR.

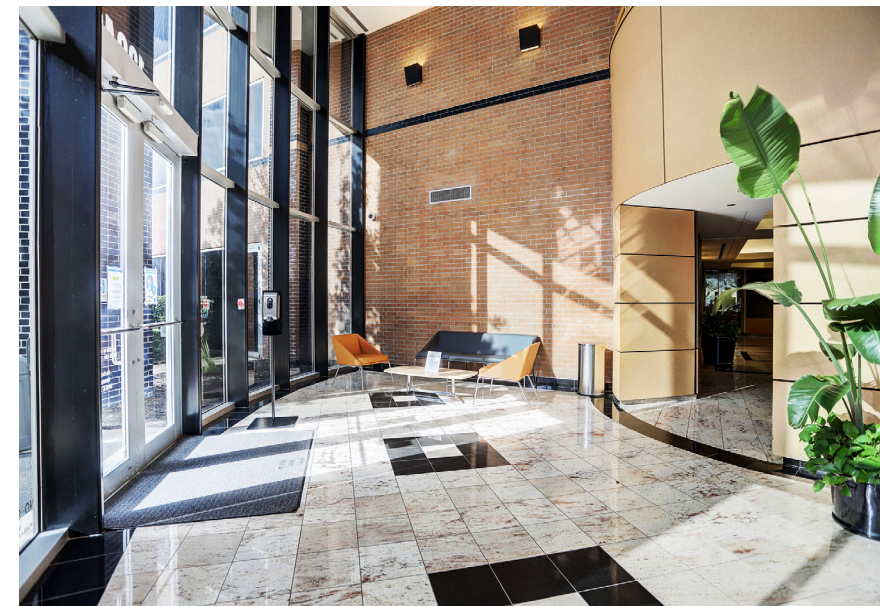
[VISIT THE WEBSITE!](#)

FOR LEASING INFORMATION CONTACT

Robert LaCoure | Principal  
rlacoure@lee-associates.com  
713.744.7442

Jill Nesloney | Principal  
jnesloney@lee-associates.com  
713.744.7411

Chris Lewis | Managing Principal  
clewis@lee-associates.com  
713.744.7441







 **TEXAN BANK**



**LEE & ASSOCIATES**  
COMMERCIAL REAL ESTATE SERVICES

Robert LaCoure | Principal  
rlacoure@lee-associates.com  
713.744.7442

Jill Nesloney | Principal  
jnesloney@lee-associates.com  
713.744.7411

Chris Lewis | Managing Principal  
clewis@lee-associates.com  
713.744.7441