



**FOR LEASE**  
**300 Karin Lane**  
Hicksville, NY

## ± 28,000 SF of Industrial Space

<b>Available Space</b>	± 28,000 SF
<b>Ceiling Height</b>	20' Clear
<b>Loading</b>	2 Docks
<b>Power</b>	600 Amps
<b>Heat</b>	Oil
<b>Parking</b>	Ample
<b>Occupancy</b>	Arranged
<b>Lease Price</b>	Upon Request



### Property Highlights

- Monumental Signage Available at Entrance
- Corporate Setting & Secured Business Park
- Drive-in Door Can Be Added
- Back-up Generator
- Column spacing 33' x 25'
- Sprinklered
- Close proximity to Long Island Expressway and The Seaford Oyster Bay Expressway



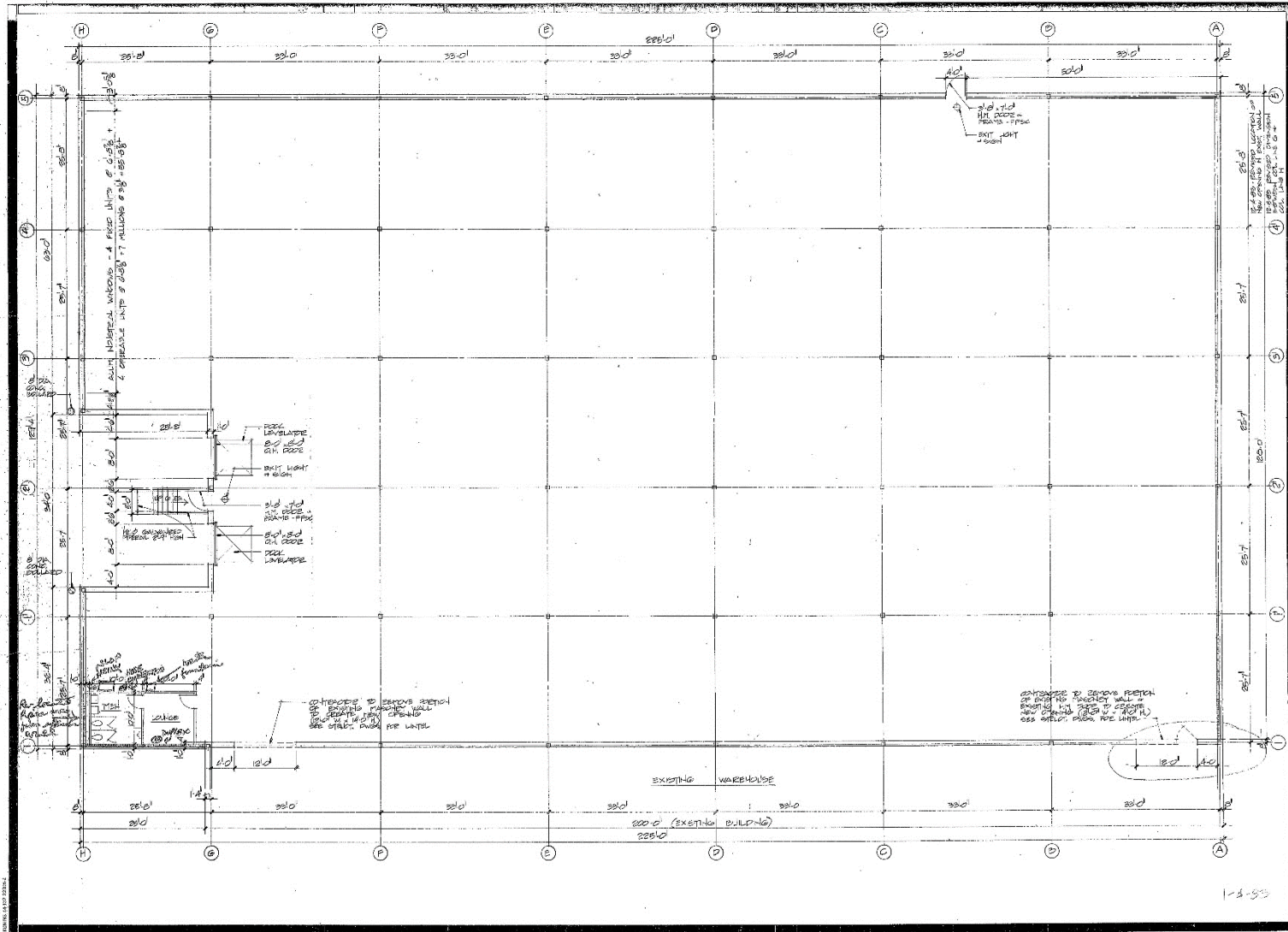
**James Frank**  
Executive Managing Director  
201.460.3399  
[james.frank@cushwake.com](mailto:james.frank@cushwake.com)

**Nicholas Gallipoli**  
Director  
631.425.1217  
[nicholas.gallipoli@cushwake.com](mailto:nicholas.gallipoli@cushwake.com)

**Thomas DeLuca**  
Associate  
631.425.1237  
[thomas.deluca@cushwake.com](mailto:thomas.deluca@cushwake.com)

401 Broad Hollow Road, Suite 301  
Melville, NY 11747  
main +1 631.425.1200  
[cushmanwakefield.com](http://cushmanwakefield.com)

Floor Plan



**James Frank**  
Executive Managing Director  
201.460.3399  
james.frank@cushwake.com

**Nicholas Gallipoli**  
Director  
631.425.1217  
nicholas.gallipoli@cushwake.com

**Thomas DeLuca**  
Associate  
631.425.1237  
thomas.deluca@cushwake.com

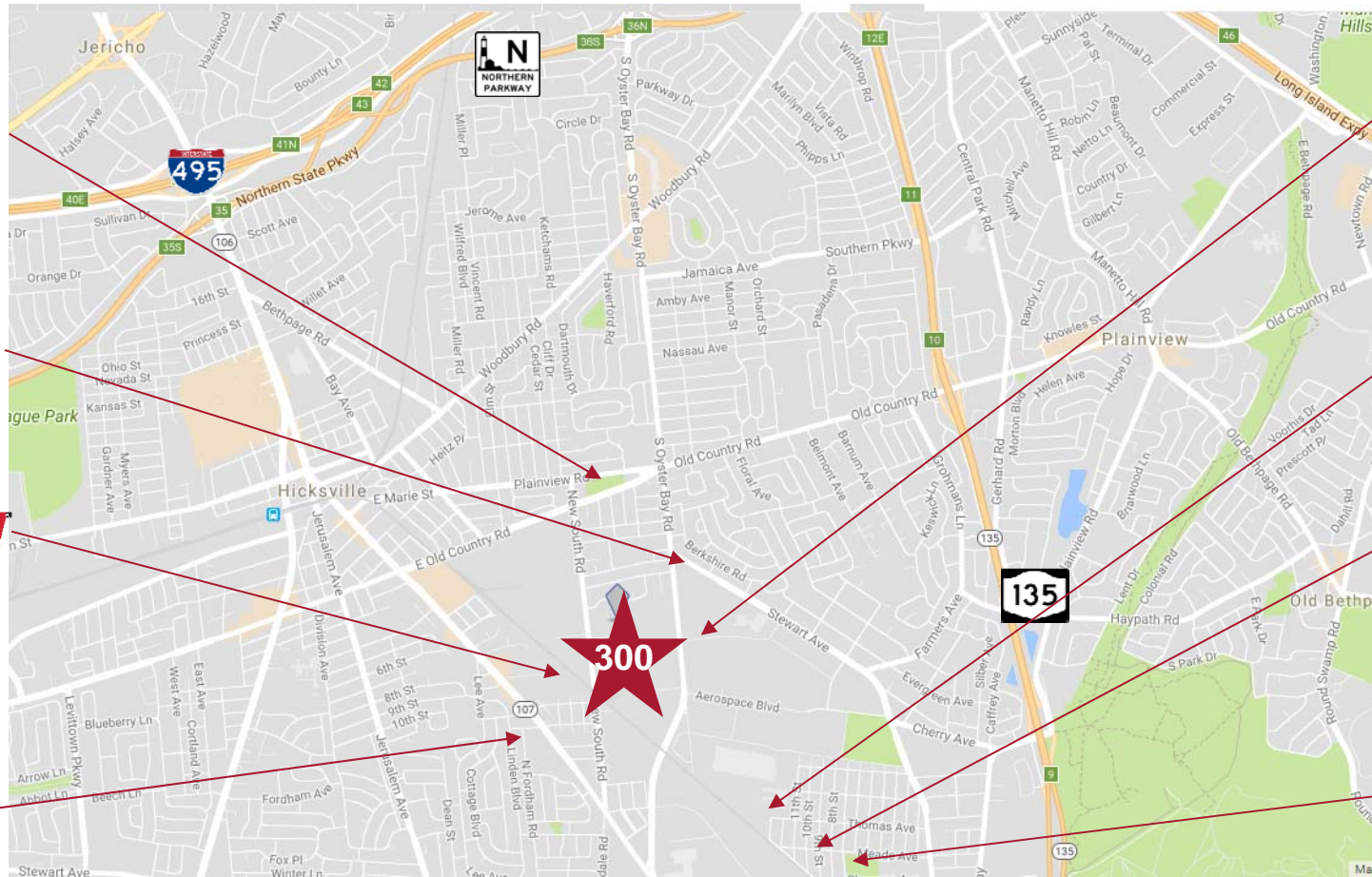
401 Broad Hollow Road, Suite 301  
Melville, NY 11747  
main +1 631.425.1200  
cushmanwakefield.com





**FOR LEASE**  
**300 Karin Lane**  
 Hicksville, NY

Location Map & Major Occupiers



**James Frank**  
 Executive Managing Director  
 201.460.3399  
[james.frank@cushwake.com](mailto:james.frank@cushwake.com)

**Nicholas Gallipoli**  
 Director  
 631.425.1217  
[nicholas.gallipoli@cushwake.com](mailto:nicholas.gallipoli@cushwake.com)

**Thomas DeLuca**  
 Associate  
 631.425.1237  
[thomas.deluca@cushwake.com](mailto:thomas.deluca@cushwake.com)

401 Broad Hollow Road, Suite 301  
 Melville, NY 11747  
 main +1 631.425.1200  
[cushmanwakefield.com](http://cushmanwakefield.com)

Cushman & Wakefield copyright 2017. No warranty or representation, express or implied, is made to the accuracy or completeness of the information contained herein, and same is submitted subject to errors, omissions, change of price, rental or other conditions, withdrawal without notice, and to any special listing conditions imposed by the property owner(s). As applicable, we make no representation as to the condition of the property (or properties) in question. The depiction in the above photograph of any person, entity, sign, logo or property (other than Cushman & Wakefield's client and the property offered by Cushman & Wakefield) is incidental only, and is not intended to connote any affiliation, connection, association, sponsorship or approval by or between that which is incidentally depicted and Cushman & Wakefield or its client. A full commission computed and earned in accordance with the rates and conditions of our agency agreement with our principal, when received from our principal, will be paid to the cooperating broker who consummates a lease which is unconditionally executed and delivered by and between lessor and lessee (a copy of the rates and conditions referred to above is available upon request).