

# PRESCOTT AIRPARK

INDUSTRIAL UNITS FOR LEASE

**ABIGAIL CHARTIER**

Commercial Agent

928.642.3032

abigail@prescottcre.com



**Generation Lane,  
Prescott - Arizona**



# Property Overview

6705-6709 Generation Lane, Prescott, Arizona 86301

**Construction has begun on the newest industrial projects in the Prescott Airpark on Generation Lane. Each building is 17,000 square feet for lease units. Additional options for the building to be demised into 4,300 square foot units may be discussed. This beautiful spec building can be built to suit your industrial warehouse needs with your desired office and restroom spaces. The building will have multiple roll up doors for ease of entry into the warehouse. The ceiling clear height is 18' at the eave and 27'6" at the front of the building. The units will have 200 amps 480V-3 phase power. Every unit has a beautiful storefront to enhance your businesses image within the Airpark, Prescott most expansive industrial area among the tri-cities . With IG - Industrial General zoning this space can be utilized for many diverse business purposes including assembly, distribution, manufacturing, fulfillment, and a whole array of different uses. This project is strategically located between the tri-cities: Prescott, Prescott Valley, and Chino Valley. We are pre-leasing for fall 2024 delivery at \$11.00 per square foot plus NNN.**



# Property Features

**Heavy Power**

208V 3 Phase Power



**Brand New Construction**



**Fire Sprinklers**



**Roll Up Doors**



**Beautiful Building Elevation**



**Ample Parking**



**Asphalt Pad**



**Air Conditioned Building**



**Clear Height 18'-26'7"**

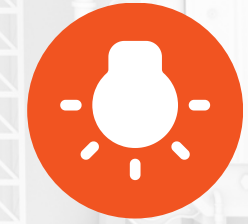


**Fenced Property**



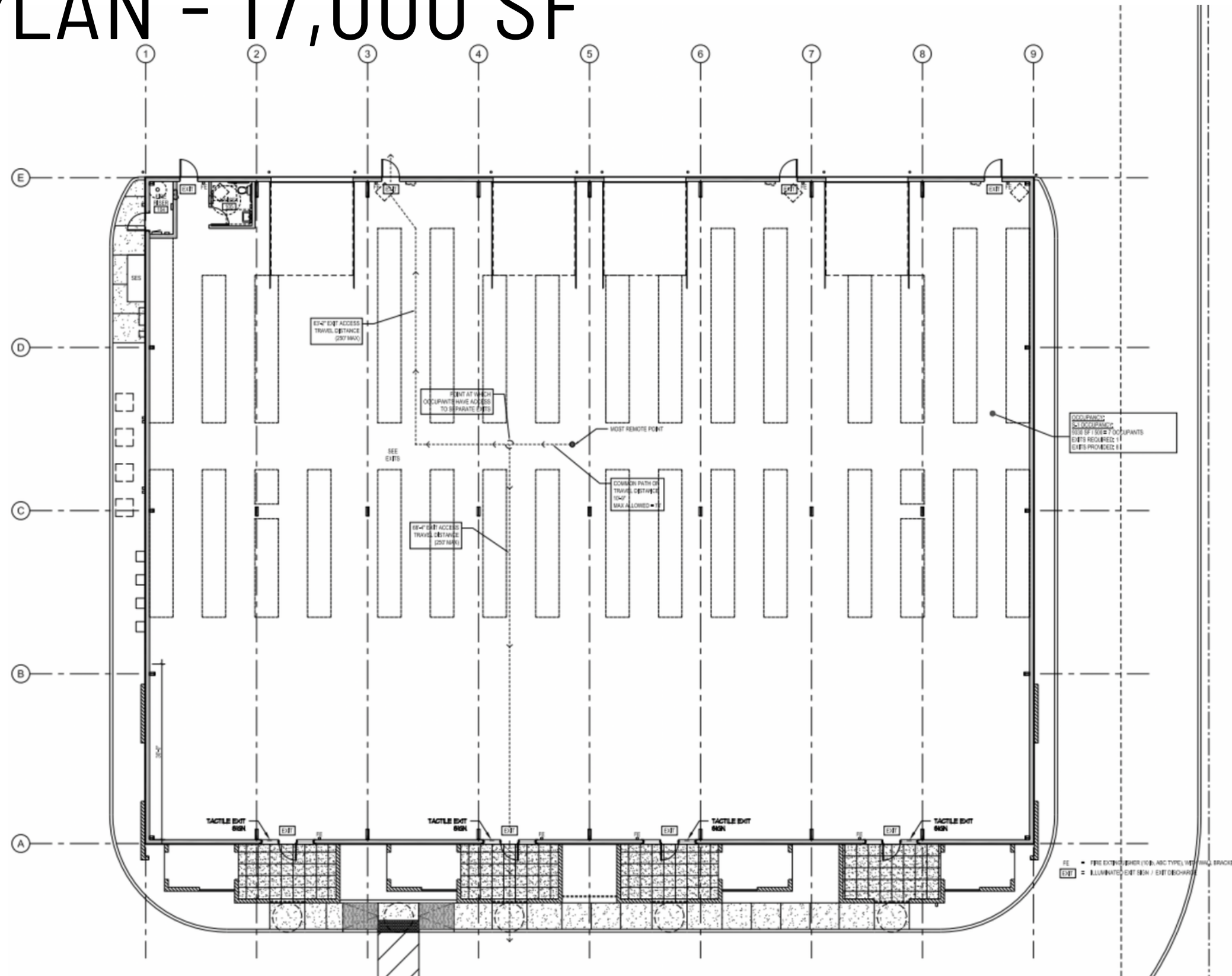
**Private Bathrooms in every unit**

**LED Lights throughout unit**

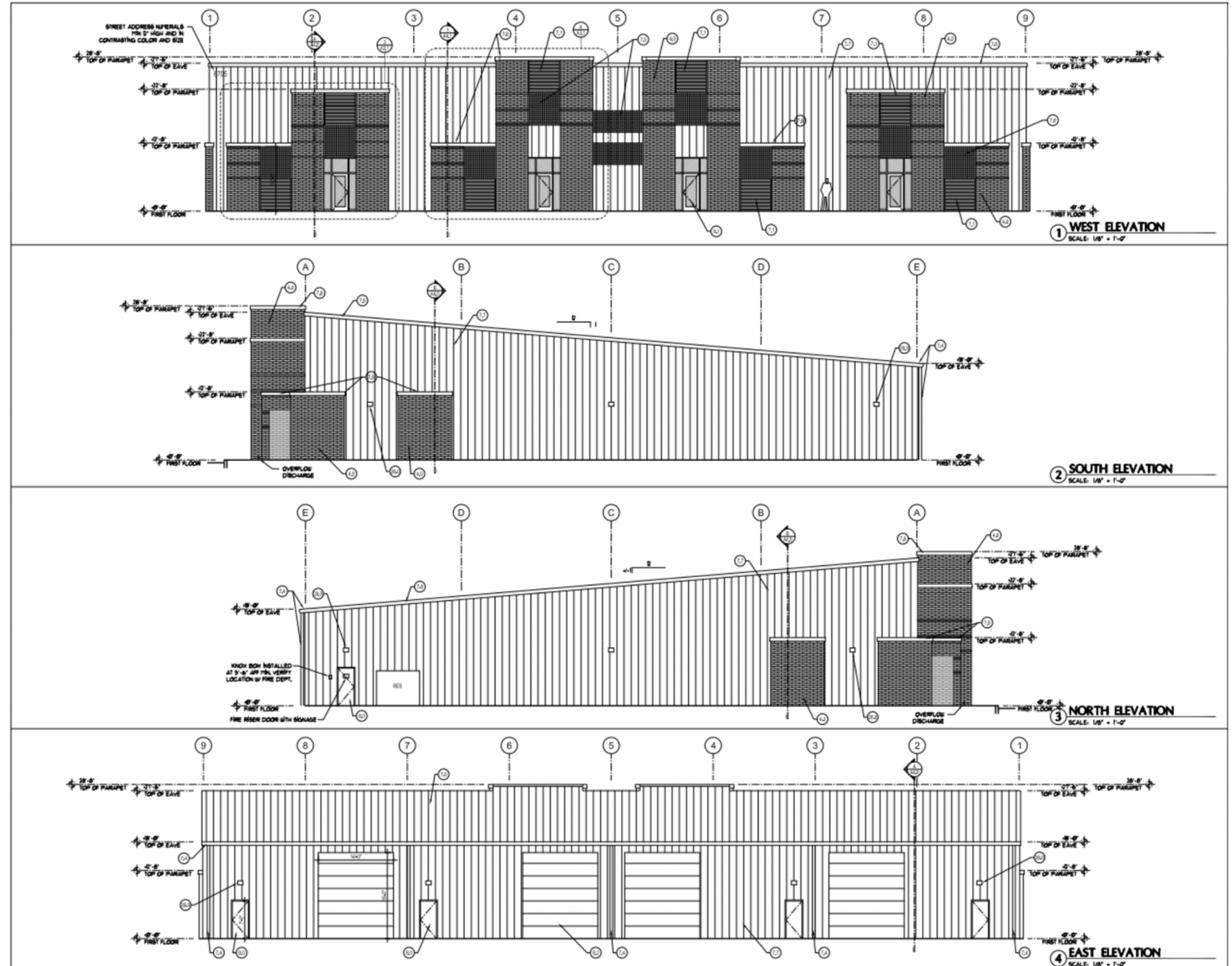




# FLOOR PLAN - 17,000 SF



# Building Elevations





# Tri-city Demographics

STRATEGICALLY POSITION YOUR BUSINESS AMONG THE TRI-CITIES



## PRESCOTT, ARIZONA



### RESIDENT POPULATION

48,946 people



### AVERAGE HOUSEHOLD INCOME

\$77,000 - \$100,000



**"THIRD IN THE COUNTRY FOR JOB GROWTH AND ECONOMIC VITALITY"**

-Wall Street Journal



## PRESCOTT VALLEY, ARIZONA



### RESIDENT POPULATION

50,687 people



### AVERAGE HOUSEHOLD INCOME

\$60,000 - \$ 73,000



**"JOB MARKET HAS INCREASED BY 2.7% ANNUALLY"**

-Census Bureau



## CHINO VALLEY, ARIZONA



### RESIDENT POPULATION

19,272 people



### AVERAGE HOUSEHOLD INCOME

\$47,000 - \$64,000



**"THE JOB MARKET INCREASE BY 2.7% OVER THE LAST YEAR. FUTURE JOB GROWTH OVER THE NEXT TEN YEARS IS PREDICTED TO BE 44.1%"**

-Bureau of Labor Statistics



FOR LEASE INDUSTRIAL UNITS

# Contact information

**ABIGAIL CHARTIER**

Commercial Agent

**CALL**

928.642.3032

**EMAIL**

abigai@prescottcre.com

**WEBSITE**

www.prescottcommercialrealestate.com

