

SECOND GENERATION END-CAP RESTAURANT

Former Bonchon
3,264 sf

LAKE POINTE VILLAGE EAST
Shadow-anchored by Whole Foods
Sugar Land, Texas

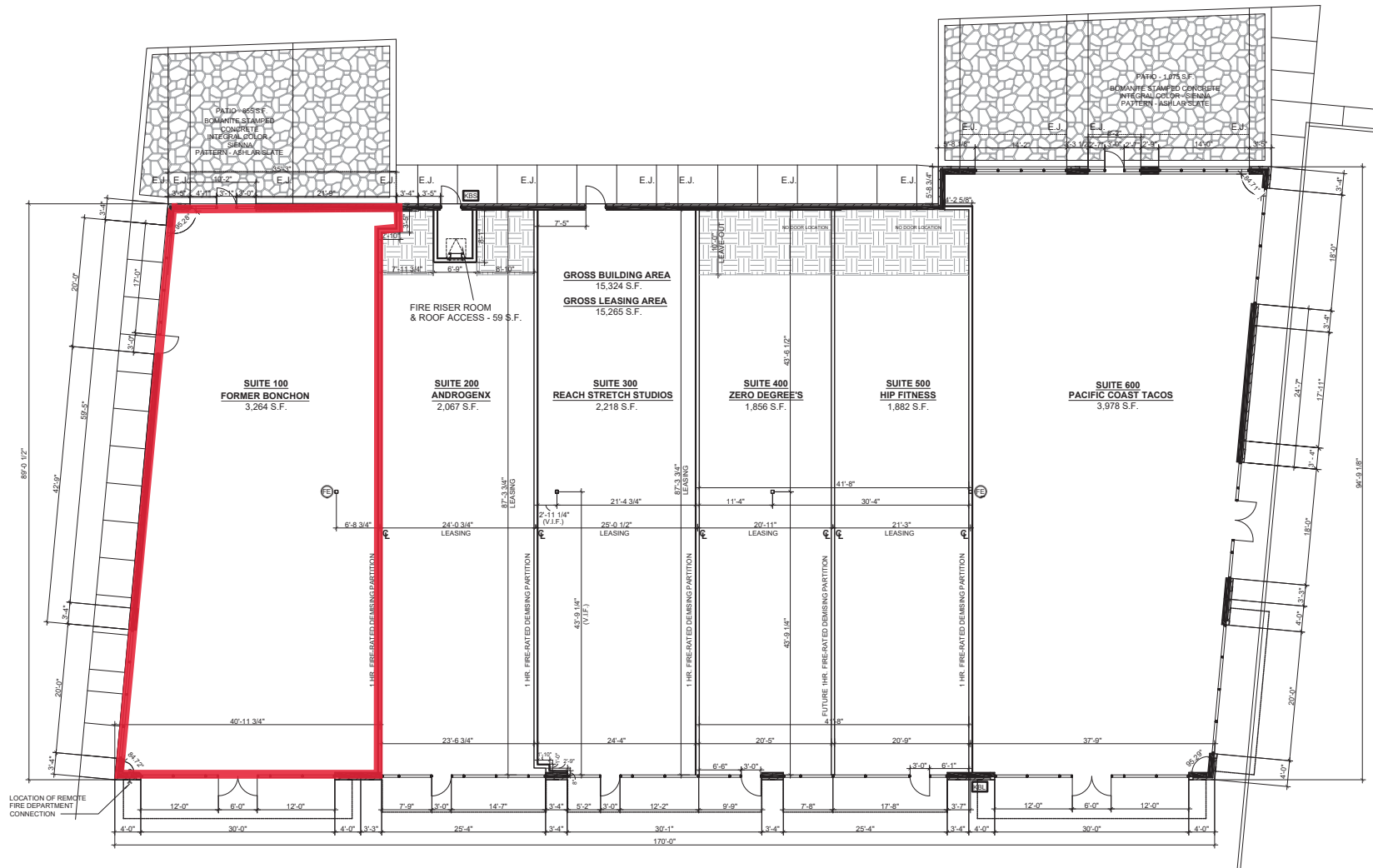




LAKE POINTE VILLAGE EAST RETAIL CENTER

SUGAR LAND, TEXAS

ALL EXISTING CONDITIONS AND DIMENSIONS TO BE VERIFIED IN FIELD



P:\1500301\DRAWINGS\3-LEASING\1-MASTER LEASING PLANS\A-LEASING PLAN-OPT 18-082418.DWG 8/24/2018 12:30:25 PM ANMOL KOLLEGAL



LAKE POINTE VILLAGE EAST

SUGAR LAND, TEXAS

OPTION
18



INCOMPLETE DRAWING. DO NOT USE FOR REGULATORY APPROVAL PURPOSES OR CONSTRUCTION

ARCHITECT: Marc Boucher
REGISTRATION #: 12201
DATE: 08/24/2018
JOB #: 1500301

Members A.I.A.
8832 Membership: Suite 200 713.785.3634
Bubake, Texas 77401 www.bdgpg.com

bdg
architecture + planning
boucher design group

This document is an instrument of service protected by the copyright law of the United States of America, 17 U.S.C. § 102, and shall not be copied or reproduced without the express written consent of Boucher Design Group, LLC.
Copyright © 2018 Boucher Design Group, LLC