

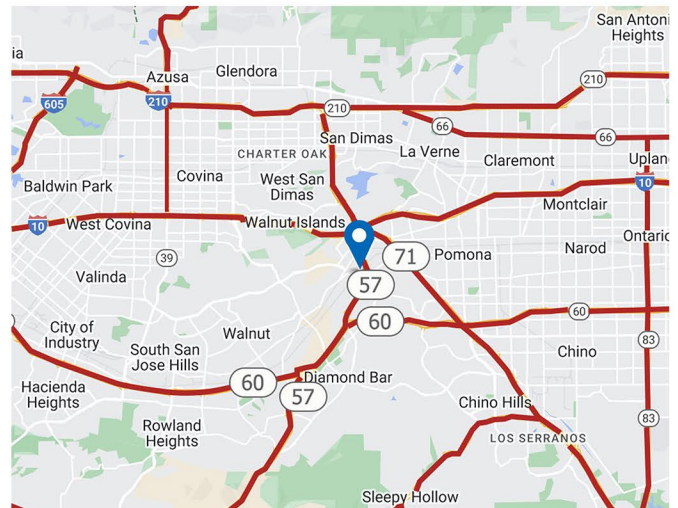
FOR LEASE 1,142 SF AVAILABLE

3191 W TEMPLE AVE SUITE 130, POMONA CA 91768



Space Highlights:

- Suite 130: 1,142 SF Available
- Newly Completed Tenant Improvement
- One Private Office, Wet Sink, Polished Concrete Floor
- Ample Parking 4.8/1000 SF Parking Ratio
- Medical Use Approved
- Newly Renovated in 2024
- After Hour Security Access



FOR MORE INFORMATION, PLEASE CONTACT.



Ricky Lee, MBA
Broker, Loan Consultant | License ID # 01932116
P: 909-348-3956
E: rickyjessie.lee@gmail.com

Daniel Huang
Senior Associate | License ID # 01959072
P/C Commercial | Li01884917
P: 626-382-8240
E: 626care1@gmail.com

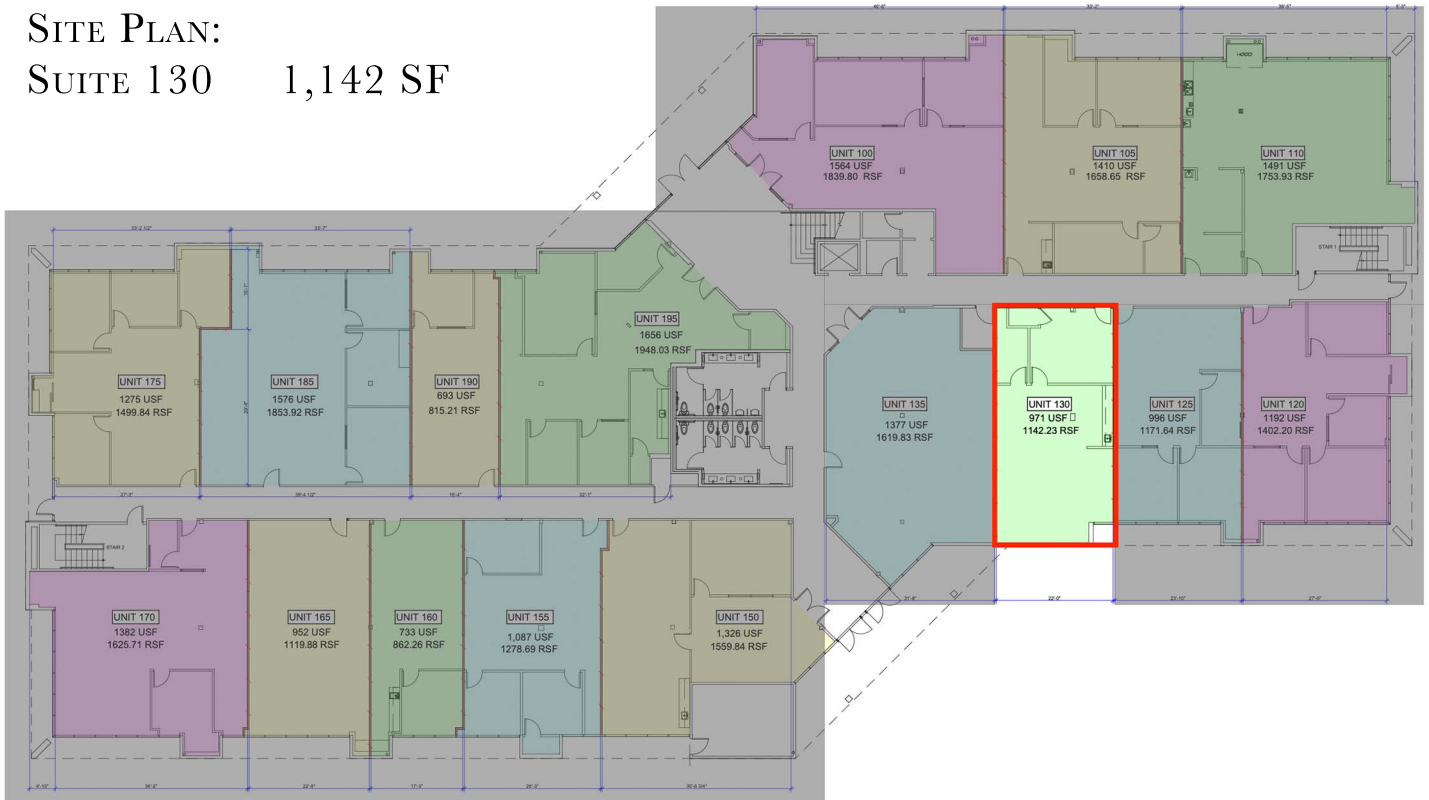
RJ REALTY
888 BREA CANYON ROAD SUITE 200
DIAMOND BAR, CA 91789
P: 909-895-7770
CORP ID 02201099

FOR LEASE 1,142 SF AVAILABLE

3191 W TEMPLE AVE SUITE 130, POMONA CA 91768



SITE PLAN:
SUITE 130 1,142 SF



FOR MORE INFORMATION, PLEASE CONTACT:



Ricky Lee, MBA
 Broker, Loan Consultant | License ID # 01932116
 P: 909-348-3956
 E: rickyjessie.lee@gmail.com

Daniel Huang
 Senior Associate | License ID # 01959072
 PYC Commercial | 01868062
 P: (626)382-8240
 E: 626care1@gmail.com



RJ REALTY
 888 BREA CANYON ROAD SUITE 200
 DIAMOND BAR, CA 91789
 P: 909-895-7770
 CORP ID 02201099

The information contained herein is obtained from sources believed to be reliable. However, we have not verified it and make no guarantees, warranties or representations as to the completeness or accuracy thereof. The presentation of this property is used for example and is submitted subject to errors, omissions, change of price or conditions, and is subject to prior sale, lease or withdrawal without notice.