

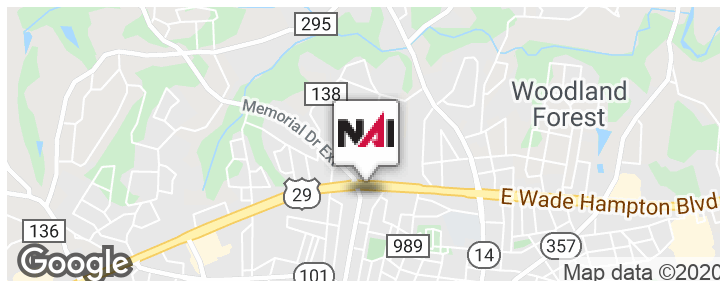


318 Memorial Drive

Greer, South Carolina 29650

Property Highlights

- ±8,000 SF medical office building with ±1,000 SF unfinished storage area
- 12 exam rooms
- 1 procedure room
- 39 parking spaces
- Zoned: C-3 City of Greer
- Excellent for an owner occupant
- Visibility from Wade Hampton Blvd
- Ready for immediate use



Offering Summary

Sale Price: \$1,200,000

Lease Rate: \$14.00 SF/yr (NNN)

For More Information

Keith Jones, CCIM, SIOR

O: 864 232 9040
keith@naiearlefurman.com

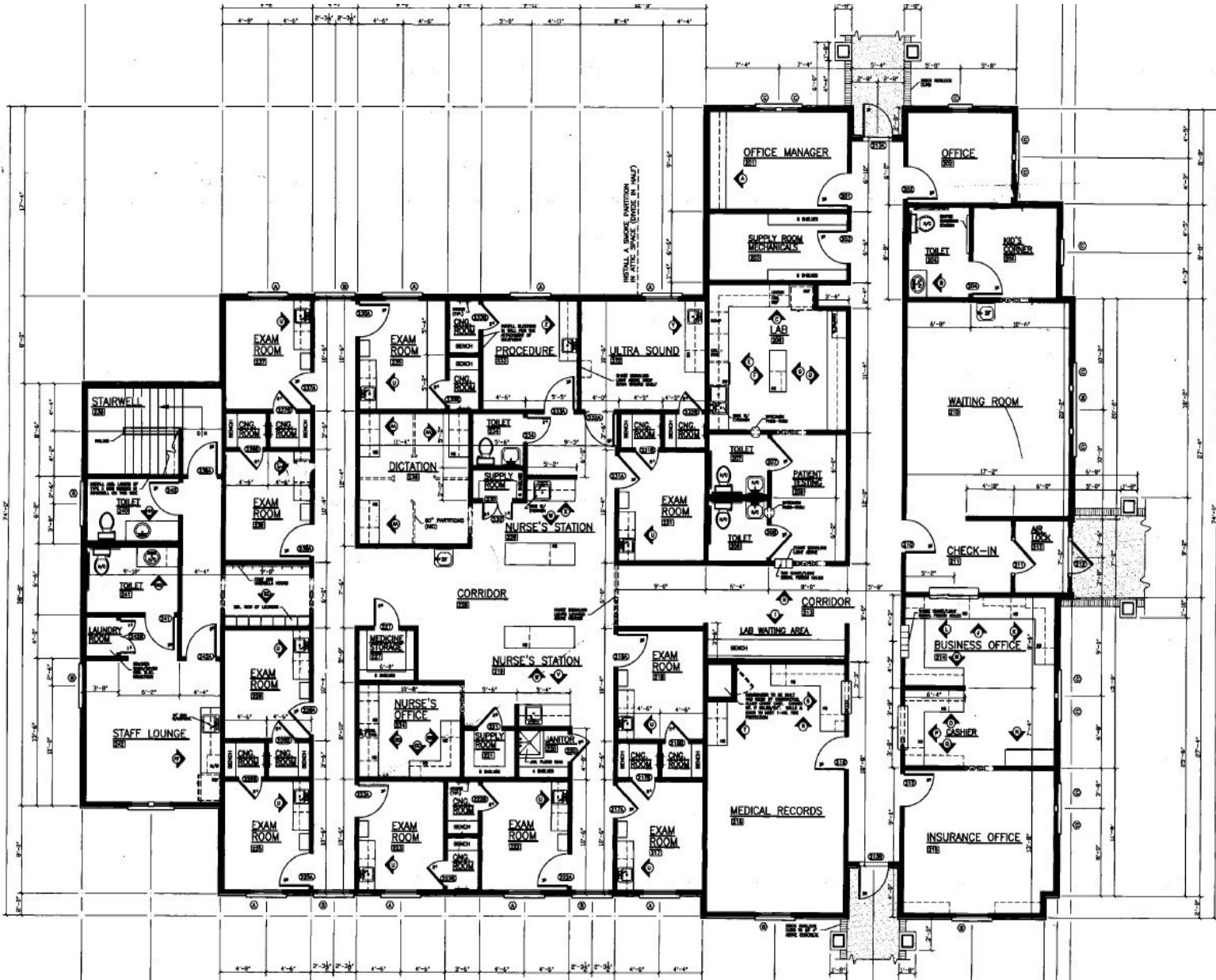
McNeil Epps, CCIM

O: 864 232 9040 x5956
mepps@naiearlefurman.com



We obtained the information above from sources we believe to be reliable. However, we have not verified its accuracy and make no guarantee, warranty or representation about it. It is submitted subject to the possibility of errors, omissions, change of price, rental or other conditions, prior sale, lease or financing, or withdrawal without notice. We include projections, opinions, assumptions or estimates for example only, and they may not represent current or future performance of the property. You and your tax and legal advisors should conduct your own investigation of the property and transaction.

101 E Washington St, Suite 400
Greenville, SC 29601
864 232 9040 tel
naiearlefurman.com



We obtained the information above from sources we believe to be reliable. However, we have not verified its accuracy and make no guarantee, warranty or representation about it. It is submitted subject to the possibility of errors, omissions, change of price, rental or other conditions, prior sale, lease or financing, or withdrawal without notice. We include projections, opinions, assumptions or estimates for example only, and they may not represent current or future performance of the property. You and your tax and legal advisors should conduct your own investigation of the property and transaction.

101 E Washington St, Suite 400
 Greenville, SC 29601
 864 232 9040 tel
naiearlefurman.com

