

**TO LET**

**TWO INTERCONNECTING  
GROUND FLOOR RETAIL UNITS  
AVAILABLE SEPARATELY TO TOGETHER  
58.44 - 143.63 SQ M (629 - 1,546 SQ FT)**

**13-15 Sussex Road, Haywards Heath, RH16 4DZ**



## Summary

<b>Available Size</b>	629 to 1,546 sq ft
<b>Rent</b>	£27,000 per annum exclusive taken as a whole.
<b>Business Rates</b>	Currently rated as a whole with a Rateable Value of £18,000 and a UBR of 49.9 p in £.
<b>EPC Rating</b>	Upon Enquiry

## Description

Premises comprise two interconnecting ground floor retail units, available together or separately to suit an occupier's requirements. Both units comprise a retail area with further showroom area/stores.

The premises benefit from a single garage to the rear.

## Location

Haywards Heath is an affluent commuter town in Mid Sussex, approximately 8 miles south of Crawley (and Gatwick Airport) and 12 miles north of Brighton and Hove. The A23 is conveniently situated five miles to the west, accessed via the A272.

## Accommodation

The accommodation comprises the following approximate net internal floor areas:

Description	sq ft	sq m
No. 13	917	85.19
No. 15	629	58.44
<b>Total</b>	<b>1,546</b>	<b>143.63</b>

## Specification

- Intruder alarm and security shutters
- Fire alarm
- CAT II lighting and spot lighting
- Suspended hung ceiling tiles
- Single phase power
- Night storage heating
- WC's

## Lease

The premises are available by way of a new lease(s) on terms to be agreed.

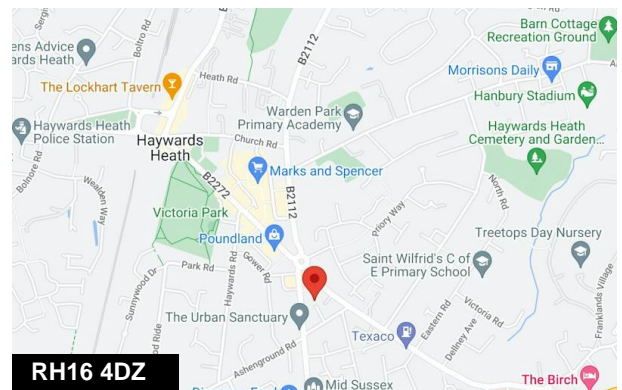
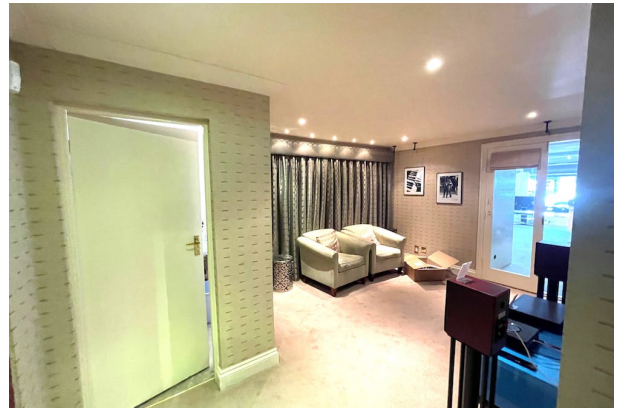
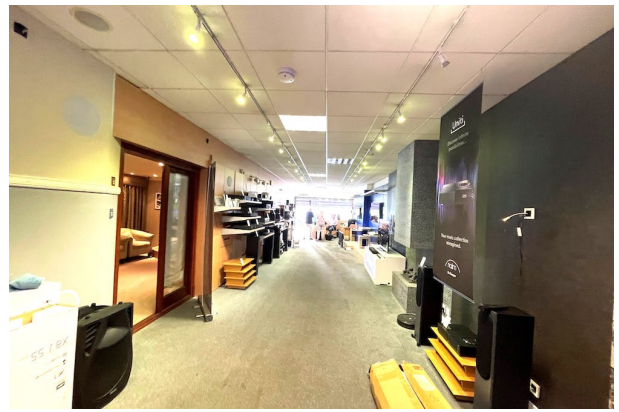
Interest parties should not that further storage to the rear of the property may be available by way of separate negotiation.

## VAT

VAT may be applicable on the terms quoted.

## Legal Costs

Each party to be responsible for their own legal costs.



## Viewing & Further Information



**Alexander Mullett**

01444 708989 | 07595 619416  
am@crickmay.co.uk



**Jonathan Mack**

01403 756510 | 07557 562699  
jm@crickmay.co.uk

[More details @ crickmay.co.uk](http://www.crickmay.co.uk)



### Crickmay Chartered Surveyors

Aberdeen House, South Road, Haywards Heath, West Sussex, RH16 4NG  
T: 01444 443400 [crickmay.co.uk](http://www.crickmay.co.uk)

Particulars contained herein are for guidance only and their accuracy is not guaranteed neither do they form any part of a contract. All figures quoted are exclusive of VAT if applicable.



