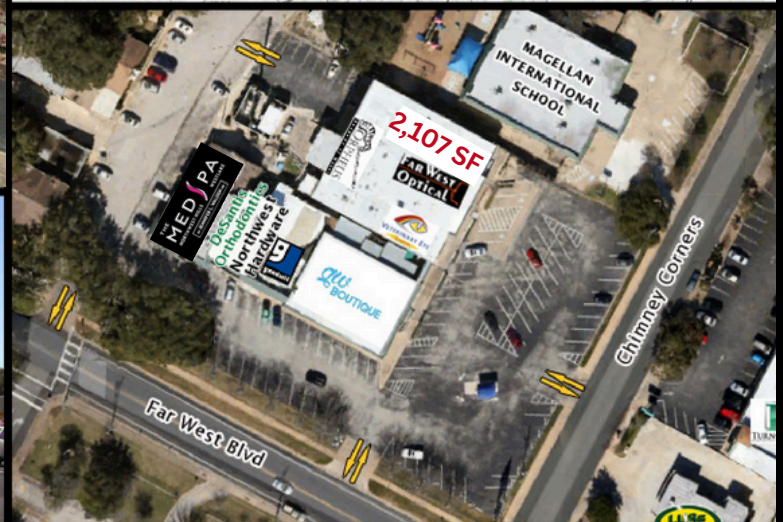
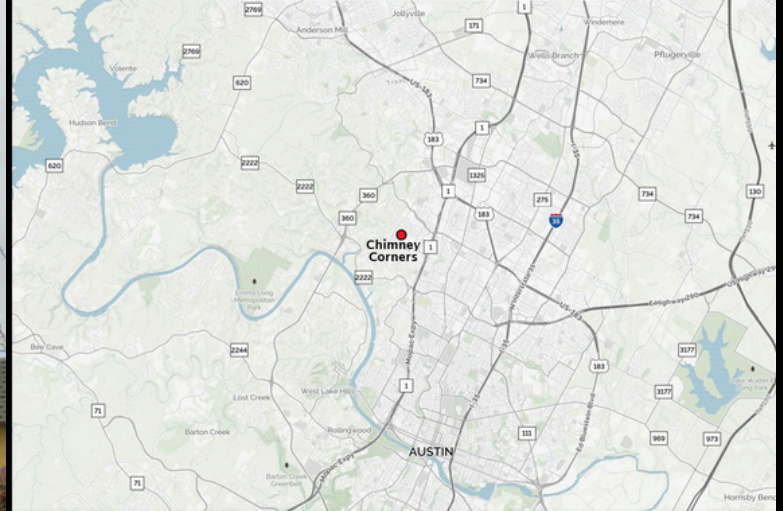


ROBSTERN COMPANY

Landmark Location

FOR LEASE

2,107 SF End-Cap—Last Remaining Space



PROPERTY AND AREA DESCRIPTION

Centrally located between MoPac Expy (Loop 1) & Mesa Dr Great visibility and convenient ingress/egress from Far West Blvd & Chimney Corners A steadfast suburban market with strong residential

demographics—Northwest Hills, Wood Creek, Enclave at Mesa Oaks, Highland Hills

Minimal area retail competition and long time co-tenants include Far West Optical and Northwest Hills Pharmacy and Florist

Area retailers—Mr. Gatti's, UPS Store, Austin's Pizza, Wendy's, Lamb's Tire and Automotive...

Pylon sign space available, ample parking and well kept property and landscaping

CHIMNEY CORNERS

3910 Far West Boulevard Austin, Texas 78731 

NORTHWEST HILLS | NWC OF FAR WEST BLVD AND CHIMNEY CORNERS

ROB STERN 512-502-1300 • rob@robstern.net • 4131 SPICEWOOD SPRINGS RD, N-1 AUSTIN, TX 78759

The information contained herein was obtained from sources deemed to be reliable. However, Rob Stern Company makes no guarantees, warranties, or representations as to the completeness or accuracy thereof.

ROB STERN COMPANY

Landmark Location

FOR LEASE

1,016 SF End-Cap—Last Remaining Space

INTERIOR PHOTO | FLOOR PLAN



- 3910 GW Boutique
- 3916 DeSantis Orthodontics
- 3918 Walden Med Spa
- 3922 Walden Med Spa
- 3908A Eye vet—veterinary Eye Center Far
- 3908B West Optical
- 3910B Goodwill Drop Off
- 3908C Available**
- 3918C Orpheus Academy of Music



CHIMNEY CORNERS

3910 Far West Boulevard Austin, Texas 78731

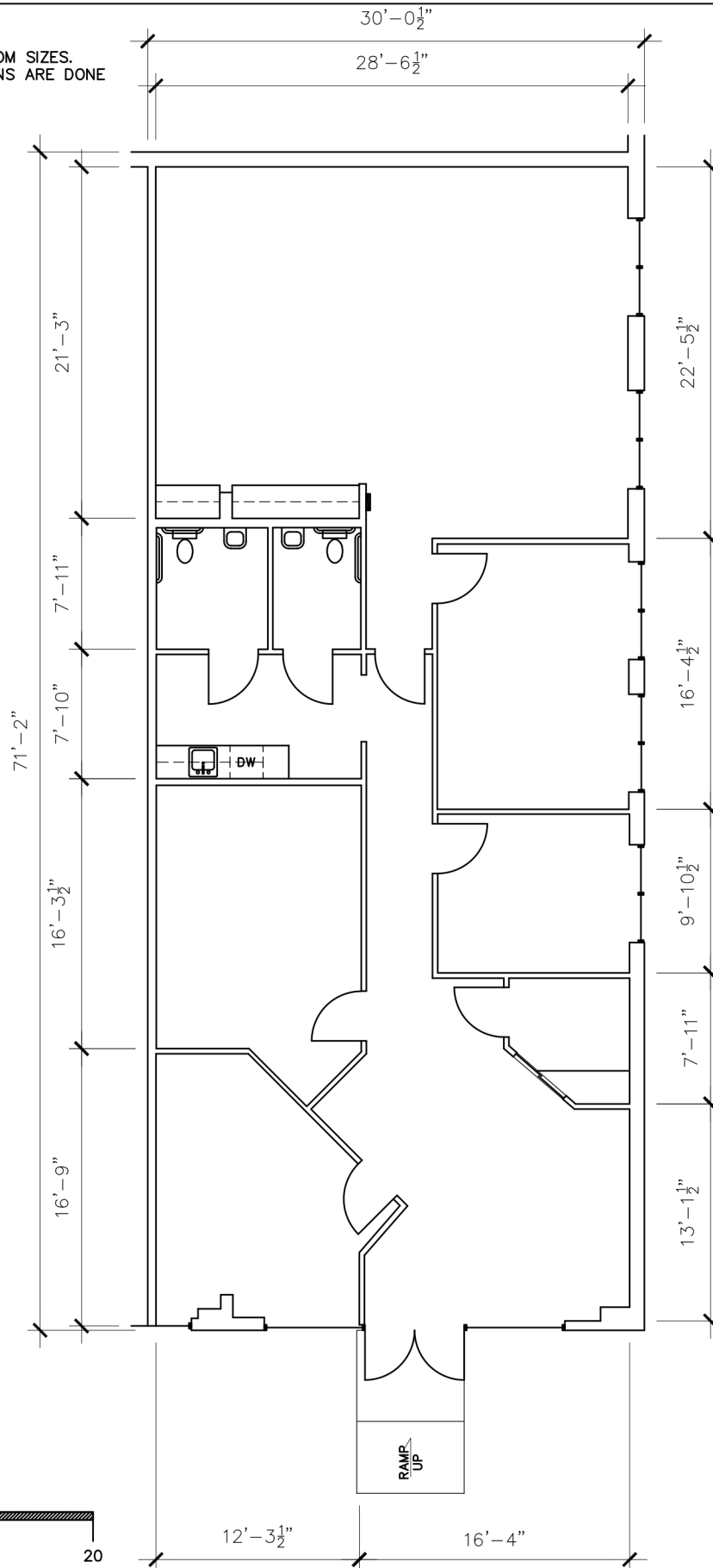
NORTHWEST HILLS | NWC OF FAR WEST BLVD AND CHIMNEY CORNERS

Rob STERN 512-502-1300 • ROBSTERN@TEXAS.NET • 4131 SPICEWOOD SPRING RD, N-1 AUSTIN, TX 78759

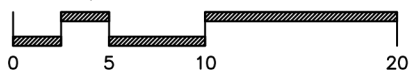
The information contained herein was obtained from sources deemed to be reliable. However, Rob Stern Company makes no guarantees, warranties, or representations as to the completeness or accuracy thereof.

NOTE:

DIMENSIONS ARE TO SHOW ROOM SIZES.
SQUARE FOOTAGE CALCULATIONS ARE DONE
TO BOMA STANDARDS.



SCALE: 1/10" = 1'-0"



Drawing for:
The Rob Stern Co.
4131 Spicewood Springs Rd,
Ste. N1
Austn, Texas 78759

SUITE 3910-C
3910 FAR WEST BLVD.
AUSTN, TEXAS
GROSS LEASEABLE AREA: 2,107 S.F.

THE MEASUREMENTS, FLOOR PLANS,
AND CALCULATIONS ARE ACCURATE
USING BOMA MEASUREMENT
STANDARDS FOR RETAIL BUILDINGS.
ANSI/BOMA Z65.5 - 2020
Project No.: 2363.01
Date: July 11, 2023
©2023

†DIMENSIONS†
FLOOR PLANS
Austin, Texas
dimensionsfloorplans.com
Phone: (512)342-0114

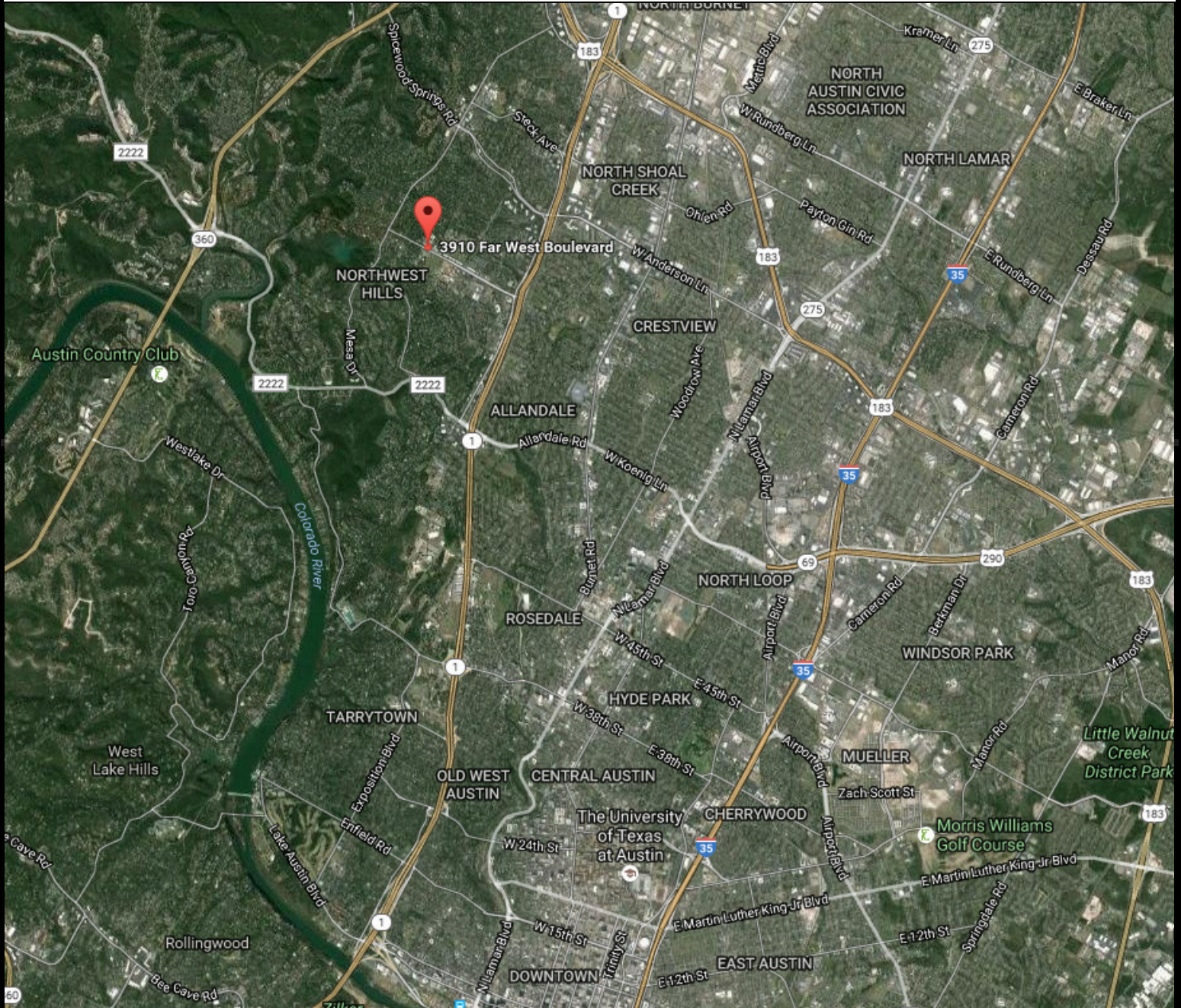
ROB STERN COMPANY

Landmark Location

FOR LEASE

2,107 SF End-Cap—Last Remaining Space

CONVENIENT NORTHWEST AUSTIN LOCATION NWC OF FAR WEST AND CHIMNEY CORNERS



CHIMNEY CORNERS

3910 Far West Boulevard Austin, Texas 78731

NORTHWEST HILLS | NWC OF FAR WEST BLVD AND CHIMNEY CORNERS

ROB STERN 512-502-1300 • ROB@ROBSTERN.NET • 4131 SPICEWOOD SPRINGS RD, N-1 AUSTIN, TX 78759

The information contained herein was obtained from sources deemed to be reliable. However, Rob Stern Company makes no guarantees, warranties, or representations as to the completeness or accuracy thereof.

