

# 24 ROLAND STREET

CHARLESTOWN, MA

# CREATIVE OFFICE & FLEX SUITES

## BRICK & BEAM + ON-SITE PARKING



**AVAILABLE SPACE**  
3rd Floor: 1,825 SF



**AVAILABLE**  
July 1, 2026

**LEASE TERM**  
Flexible



**ASKING RATE**  
\$29.00/SF  
(Modified Gross)



Boston Realty Advisors is pleased to present **1,825 SF** for lease at **24 Roland Street**. This true “Brick & Beam” building features a plentiful amount of windows allowing for an abundance of natural light, high exposed ceilings throughout, on-site parking, and is located in between 2 of Boston’s fastest growing submarkets.

## BUILDING HIGHLIGHTS



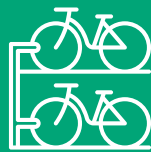
AVAILABLE BASEMENT SPACE/STORAGE



AVAILABLE ON-SITE PARKING



LOADING DOCK ACCESS



BIKE STORAGE/RACK

## CONNECTIVITY

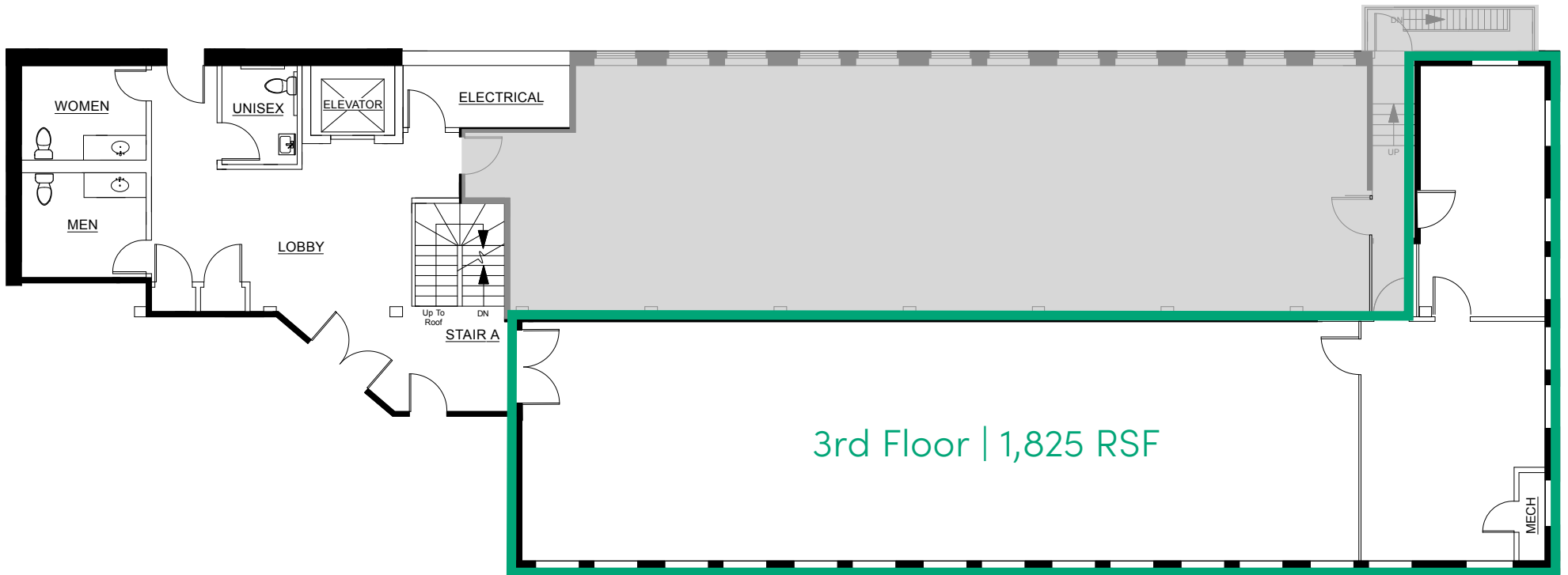
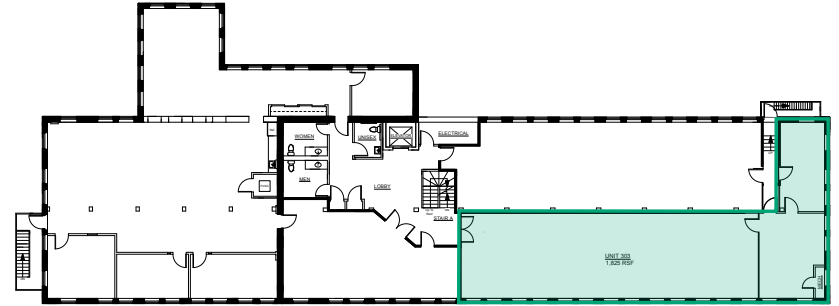


- COMCAST
- VERIZON PHONE



# 3RD FLOOR (AVAIL. 7/1/26) 1,825 SF

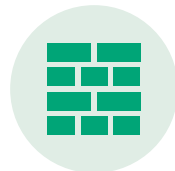
\*Plan not to scale.



ROLAND STREET



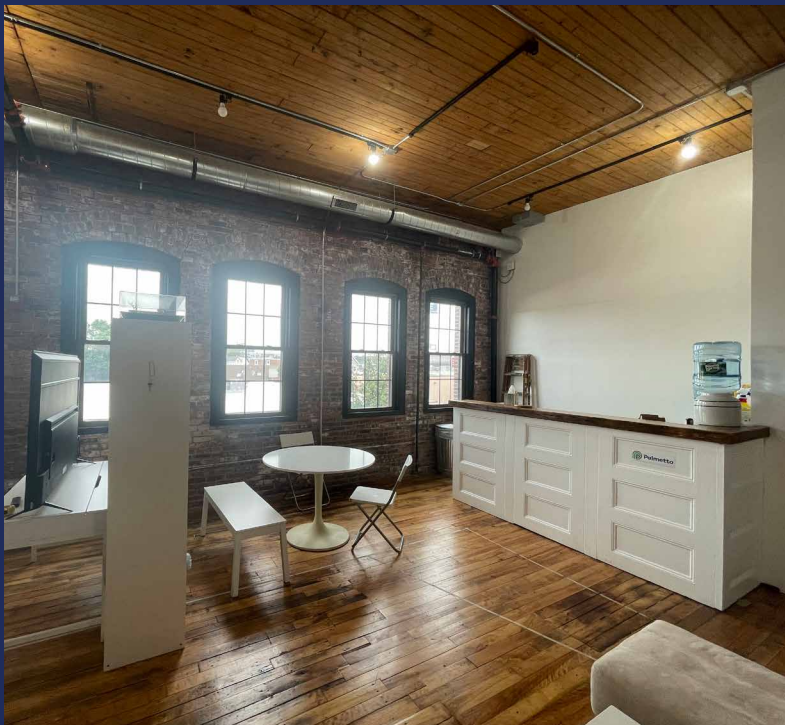
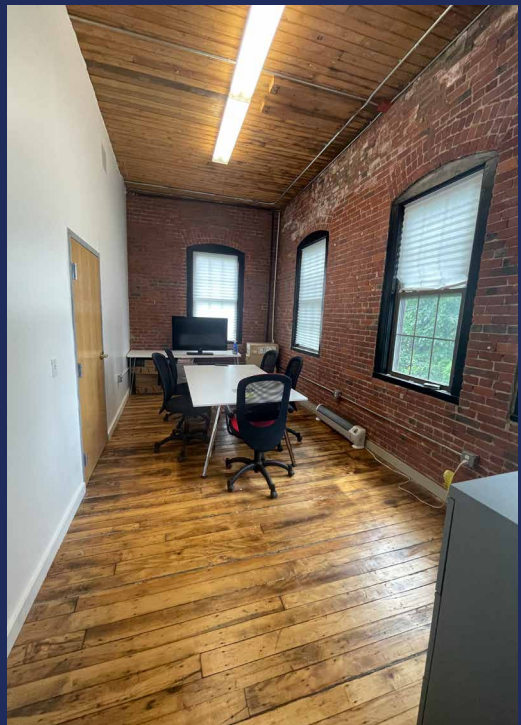
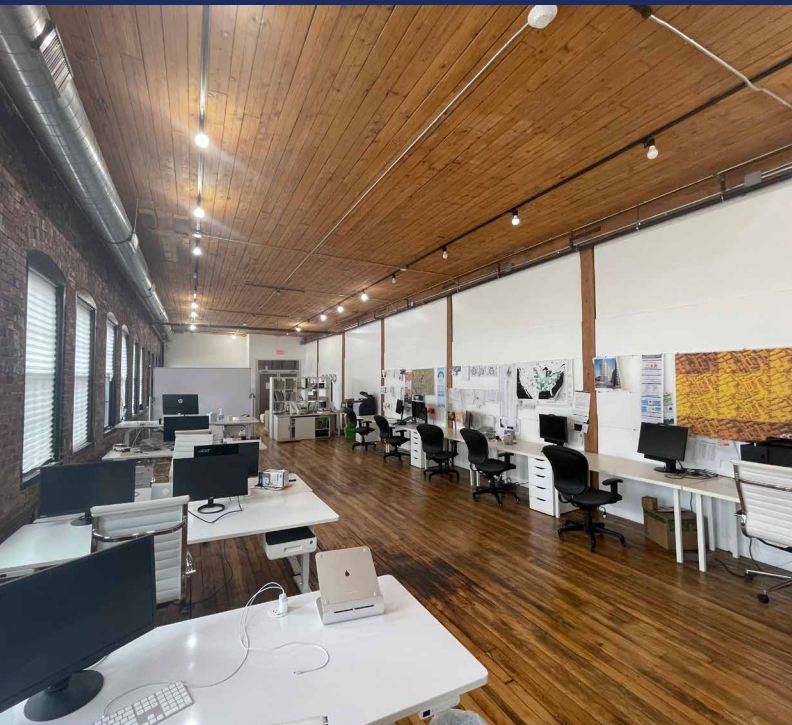
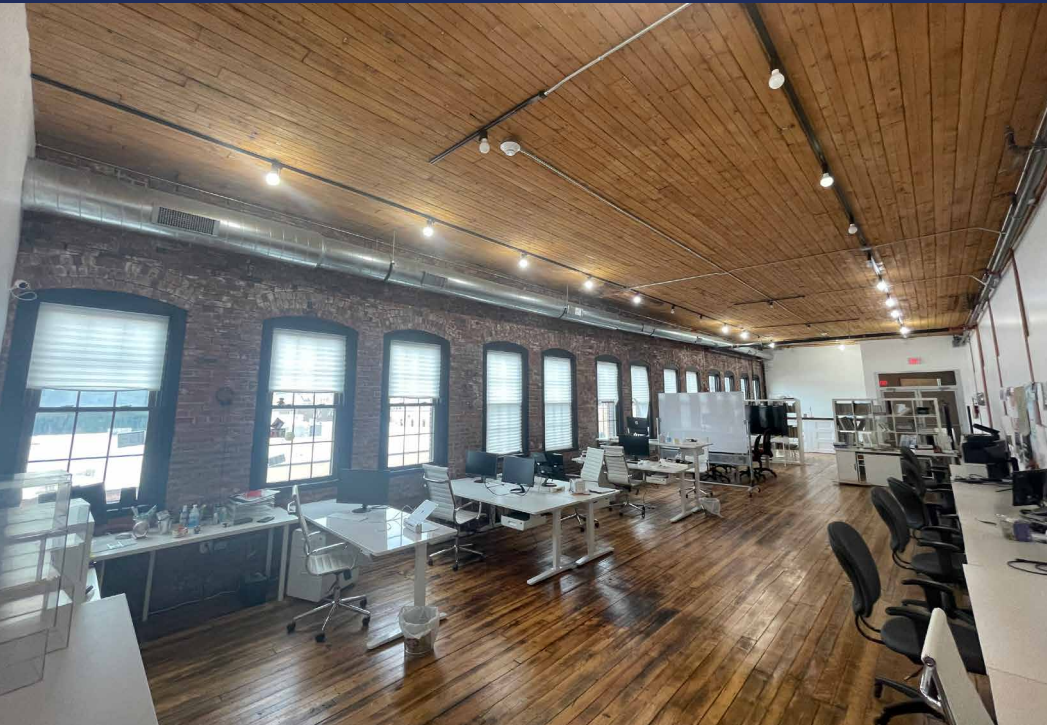
11+ FT  
CEILING HEIGHT



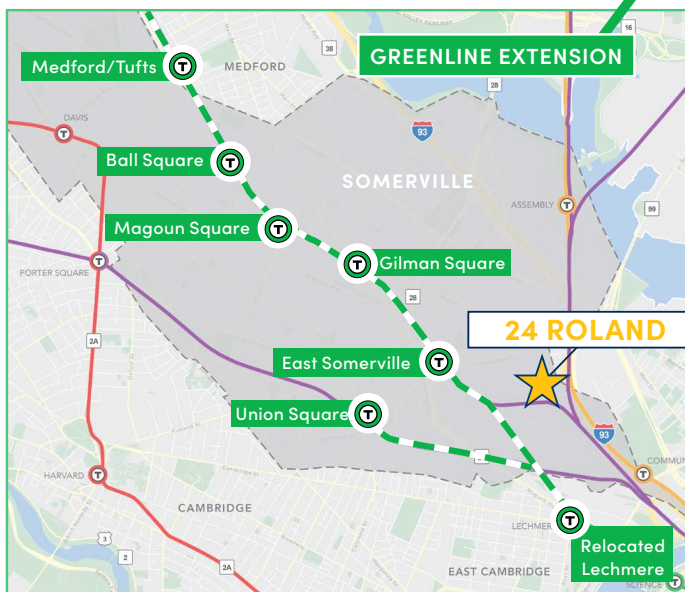
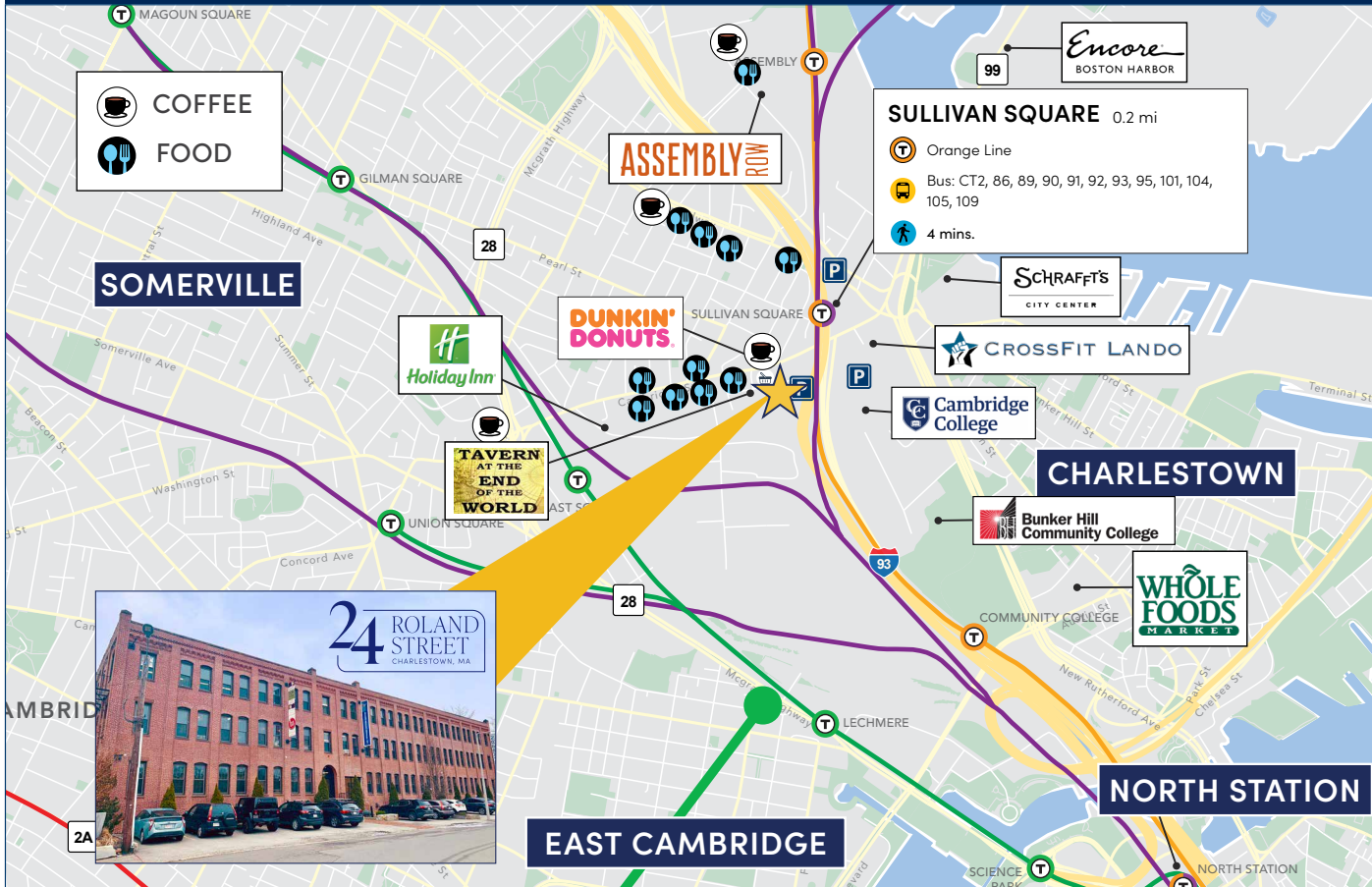
BEAUTIFUL EXPOSED  
BRICK & BEAM  
THROUGHOUT



22 WINDOWS:  
ABUNDANCE OF  
NATURAL LIGHT



# LOCATION



**4 MIN WALK** TO MBTA'S SULLIVAN SQ.  
- ORANGE LINE & BUS ROUTES



**3 MINS** - THE SCHRAFFT CENTER  
**5 MINS** - ASSEMBLY SQUARE  
**5 MINS** - NORTH STATION  
**11 MINS** - HARVARD SQUARE  
**12 MINS** - TO ROUTE 128

**JUSTIN D. HARLOW**  
*Managing Director*  
617.850.9613  
jharlow@bradvisors.com

**OWEN MURPHY**  
*Associate*  
617.850.9665  
omurphy@bradvisors.com



136 Newbury Street | Boston, MA 02116  
617.375.7900 | BRAdvisors.com

© Copyright Boston Realty Advisors. All rights reserved. The information contained here has been obtained through sources deemed reliable but cannot be guaranteed as to its accuracy. Any information of special interest should be obtained through independent verification.