

AVAILABLE FOR LEASE

43 HARRYS DRIVE

BRUNSWICK, MAINE 04011

INDUSTRIAL / WAREHOUSE • 19,363 SF AVAILABLE • FOR LEASE

19,363

SF AVAILABLE

\$8.00

PER SF / YEAR

NNN

LEASE TYPE

Now

AVAILABLE

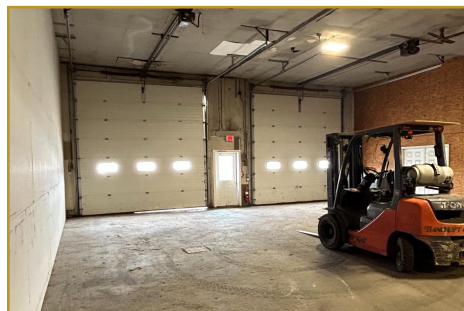
PROPERTY OVERVIEW

Industrial Warehouse & Office – Brunswick, Maine

43 Harrys Drive is an industrial property totaling 26,038 SF on a large sized site in Brunswick, Maine. The property features 19,363 SF available for lease, including warehouse and storage space served by multiple drive-in doors, loading dock and office space spread across two floors. With an abundance of paved parking, a dedicated lay-down and outdoor storage area, and forklift-accessible bays, this property is ideal for contractors, distributors, light industrial, and service-based businesses seeking flexible space in Midcoast Maine.



Drive-In Bays



Warehouse Interior



Office Space

43 Harrys Drive - Brunswick, Maine 04011

SPACE HIGHLIGHTS

- Total Building: 26,038 SF
- Available Space: 19,363 SF
- Office Space: 3,339 SF (2 floors)
- 2nd Floor Office: 1,861 SF
- 3rd Floor Office: 1,478 SF
- Multiple drive-in overhead doors
- Loading dock
- Forklift accessible warehouse
- Lay-down / outdoor storage area
- Shower on-site
- Abundance of paved parking
- Owner: Maine Gravel Services, Inc.

LEASE INFORMATION

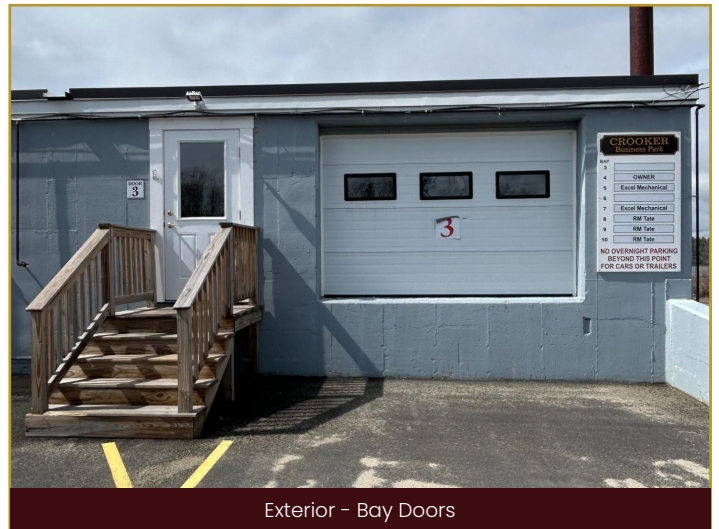
Total Building Size	26,038 SF
Total Available Space	19,363 SF
Warehouse / Storage	18,093 SF
Office - 2nd Floor	1,861 SF
Office - 3rd Floor	1,478 SF
Total Office	3,339 SF
Lease Rate	\$8.00 / SF / Year
Lease Type	NNN
Availability	Immediate
Parking	Abundant - On-Site
Drive-In Doors	Multiple
Loading Dock	Yes

PROPERTY DETAILS

Address	43 Harrys Drive
City / State	Brunswick, ME 04011
Owner	Maine Gravel Services, Inc.
Property Type	Industrial / Warehouse
Lay-Down Area	Yes - On-Site
Forklift	Accessible

LOCATION & ACCESS

- Brunswick, Maine — Midcoast Maine hub
- Portland: approx. 25 miles south
- Bath: approx. 6 miles east
- Augusta: approx. 40 miles north



Exterior - Bay Doors

CONTACT US

Priority Real Estate Group

Priority Business Center
2 Main Street - Topsham, ME 04086

T: 207-837-6110

phoward@priorityrealestategroup.com