



# 166 Geary Street

# Modern Building with Natural Light, One Block from San Francisco's Union Square

Total Sq. ft

50,575

WeWork Sq. ft

12,500

Floors

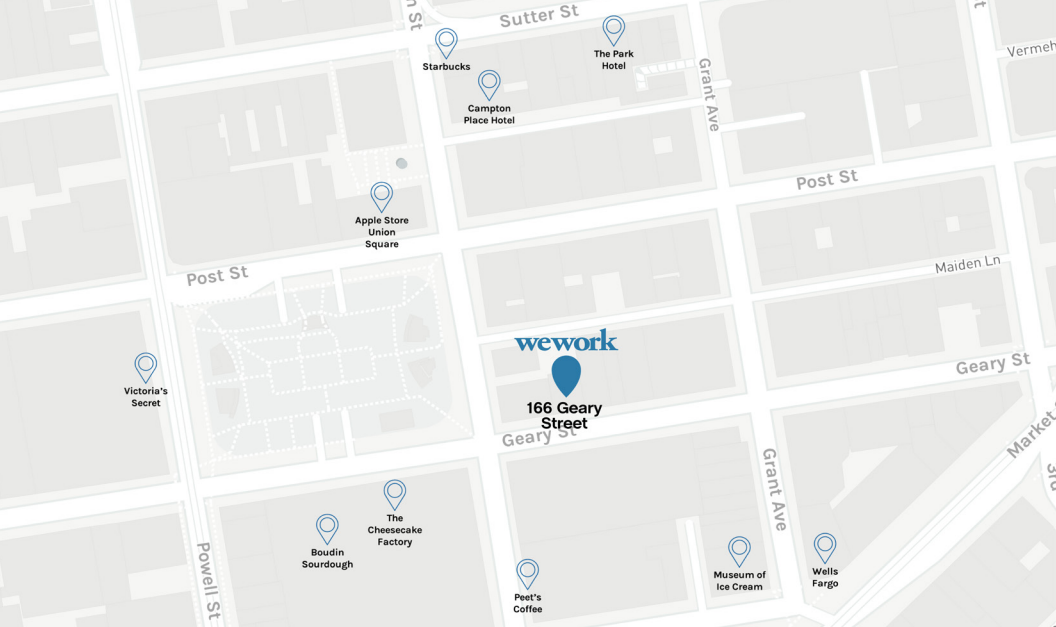
16

## Overview

166 Geary Street is a 50k sq. ft. office building in Downtown San Francisco, just one block from Union Square. Floor to ceiling windows offer maximum natural light and views of this iconic San Francisco neighborhood.

Union Square is one of the most famous shopping districts in the country, with retail space highly sought after and in short supply. 166 Geary is also near San Francisco's burgeoning SOMA neighborhood. This area has a strong mix of small startups and large companies, including nearby Twitter and Dolby Laboratories. The building is also close to hundreds of shopping and dining options around Union Square, as well as popular lunch spots in SOMA. Grab a drink with colleagues after work at Hawthorn, or celebrate a team win at nearby Hakkasan. Plus, commuting to 166 Geary is a breeze thanks to Powell Street BART and Muni stations just steps away.





# Location

## Nearby Transportation

<b>Powell &amp; Geary Stop</b> (Cable Car, Powell-Hyde, Powell-Mason)	0.1 mi
<b>Powell &amp; Post Stop</b> (Cable Car, Powell-Hyde, Powell-Mason)	0.2 mi
<b>Market &amp; 3rd/Kearny Stop</b> (Light Rail, F Market Line)	0.2 mi
<b>Powell &amp; O'Farrell Stop</b> (Cable Car, Powell-Hyde, Powell-Mason)	0.2 mi
<b>San Francisco 4th &amp; King</b> (Commuter Rail, Caltrain)	1.1 mi
<b>22nd Street</b> (Commuter Rail, Caltrain)	2.6 mi
<b>San Francisco International Airport</b>	13.9 mi
<b>Oakland International Airport</b>	20.0 mi

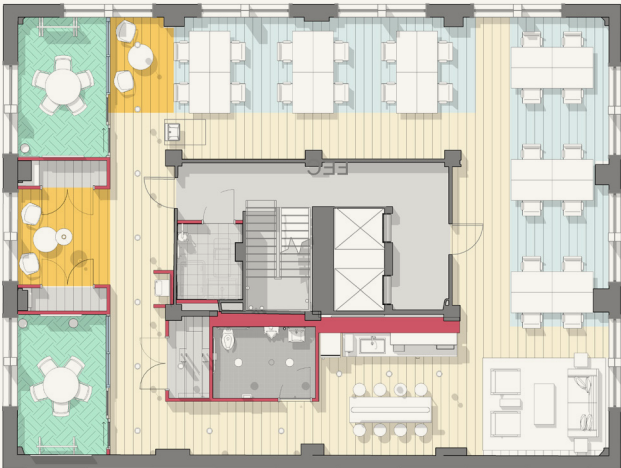




# Floor Plans

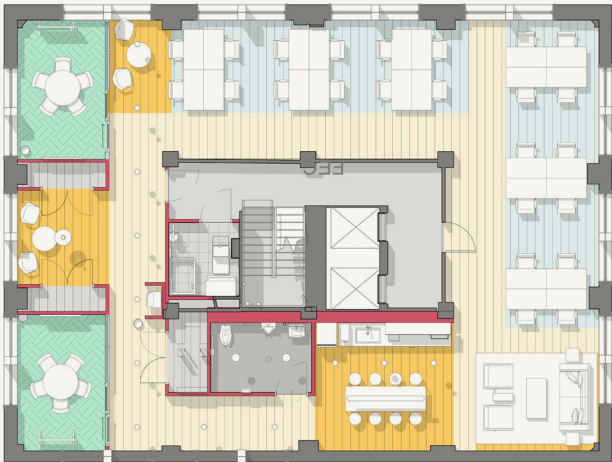
## Floor 5

2,500 sq ft



## Floor 7

2,500 sq ft



# Floor Plans

Floor 14

2,500 sq ft



Floor 15

2,500 sq ft





Example WeWork Common Area





# 166 Geary Street

166 Geary Street  
San Francisco, CA 94108  
[wework.com](https://www.wework.com)

**wework**