

FOR SUBLEASE

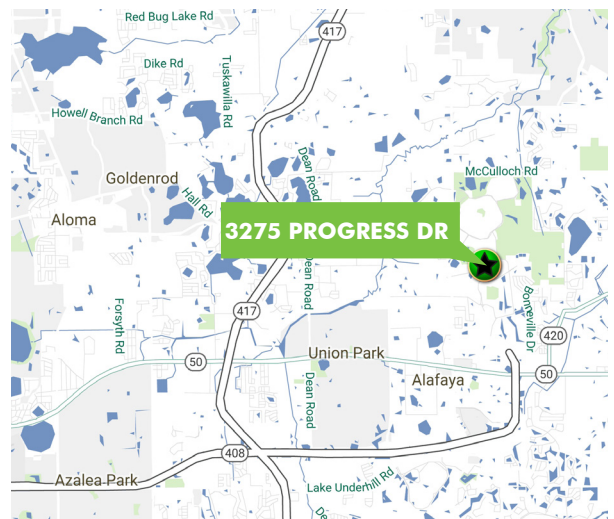
3275 PROGRESS DRIVE

ORLANDO, FL 32826



PROPERTY HIGHLIGHTS

- + Office/Warehouse Space: 1,312 - 4,244 SF
- + Also potential to add 3,000 SF of warehouse and 5,600 SF of office directly from landlord
- + Negotiable lease rate
- + Current lease expires December 31, 2018
- + Potential for longer lease available
- + Located in East Orlando minutes from the University of Central Florida and State Road 408



CONTACT US

CHRIS SPROLES

Senior Vice President
+1 407 839 3109
chris.sproles@cbre.com

TOM RICH

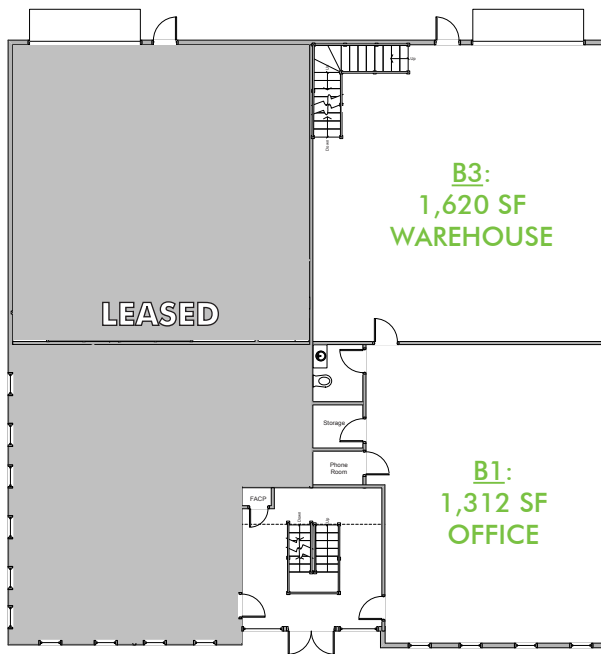
Associate
+1 407 404 5028
tom.rich@cbre.com

www.cbre.com/orlando

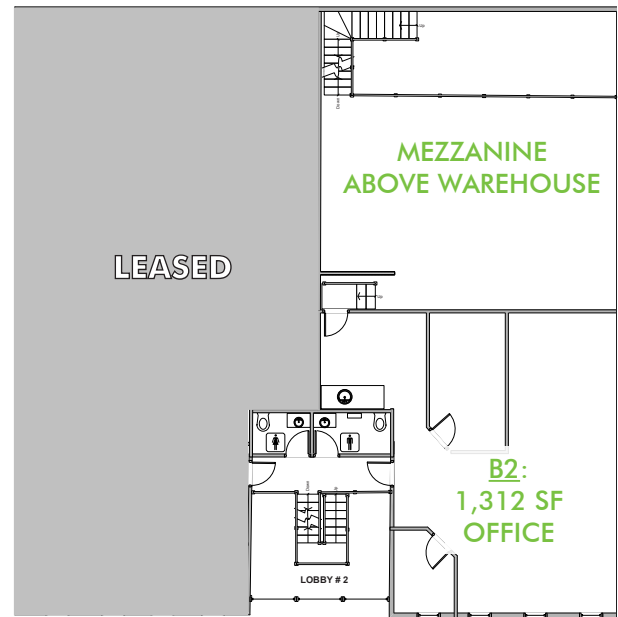
CBRE

FOR SUBLEASE
4,244 SF

3275
PROGRESS DRIVE
Orlando, FL 32826



First Floor: Up to 2,932 SF Available



Second Floor: 1,312 SF Available

CBRE, Inc. | Licensed Real Estate Broker
200 S. Orange Avenue | Suite 2100 | Orlando, FL 32801

© 2017 CBRE, Inc. All rights reserved. This information has been obtained from sources believed reliable, but has not been verified for accuracy or completeness. Any projections, opinions, or estimates are subject to uncertainty. The information may not represent the current or future performance of the property. You and your advisors should conduct a careful, independent investigation of the property and verify all information. Any reliance on this information is solely at your own risk. CBRE and the CBRE logo are service marks of CBRE, Inc. and/or its affiliated or related companies in the United States and other countries. All other marks displayed on this document are the property of their respective owners. Photos herein are the property of their respective owners and use of these images without the express written consent of the owner is prohibited.

www.cbre.com/orlando

CBRE