



**FOR LEASE - INDUSTRIAL BUILDING**

**1135 PRESTIGE WAY**

REDDING, CA 96003

**RYAN HAEDRICH, CCIM**

Owner/Associate  
D. 530.221.1127 x107  
M. 530.917.4981  
ryan@haedrich.com  
CA CalBRE #01747622



WWW.HAEDRICH.COM

FOR LEASE

# SUMMARY OF FACTS

1135 PRESTIGE WAY, REDDING, CA 96003



## PROPERTY SUMMARY

<b>Available SF:</b>	4,000 SF
<b>Lease Rate:</b>	\$0.60 SF/month (MG)
	\$2,400 /month (MG)
<b>Lease Type:</b>	Modified Gross (MG)
<b>APN:</b>	073-040-052
<b>Lot Size:</b>	23,958 SF
<b>Grade Level Doors:</b>	3
<b>Cross Streets:</b>	Caterpillar Road

## PROPERTY OVERVIEW

Industrial metal building for lease with three bay, roll-up doors and small office. Located off of Prestige Way in the Caterpillar Industrial Park. The warehouse is approximately 3,200 sq. ft. and the office is 800 sq. ft. with two offices and restroom. Property is serviced with 3-phase power and 200 amps. Central heat and air in the offices and evaporative cooler in the warehouse.

## PROPERTY HIGHLIGHTS

- Three Grade Level Roll Up Doors
- Approximately 800 sq. ft. of office space
- Easy Access from I-5
- Fenced in Yard
- 3-phase Electrical

FOR MORE INFORMATION :

**RYAN HAEDRICH, CCIM** | 530.221.1127 X107 | [RYAN@HAEDRICH.COM](mailto:RYAN@HAEDRICH.COM) | CA CALBRE #01747622 | [WWW.HAEDRICH.COM](http://WWW.HAEDRICH.COM)

FOR LEASE

# BUILDING PHOTOGRAPHS

1135 PRESTIGE WAY, REDDING, CA 96003



FOR MORE INFORMATION :

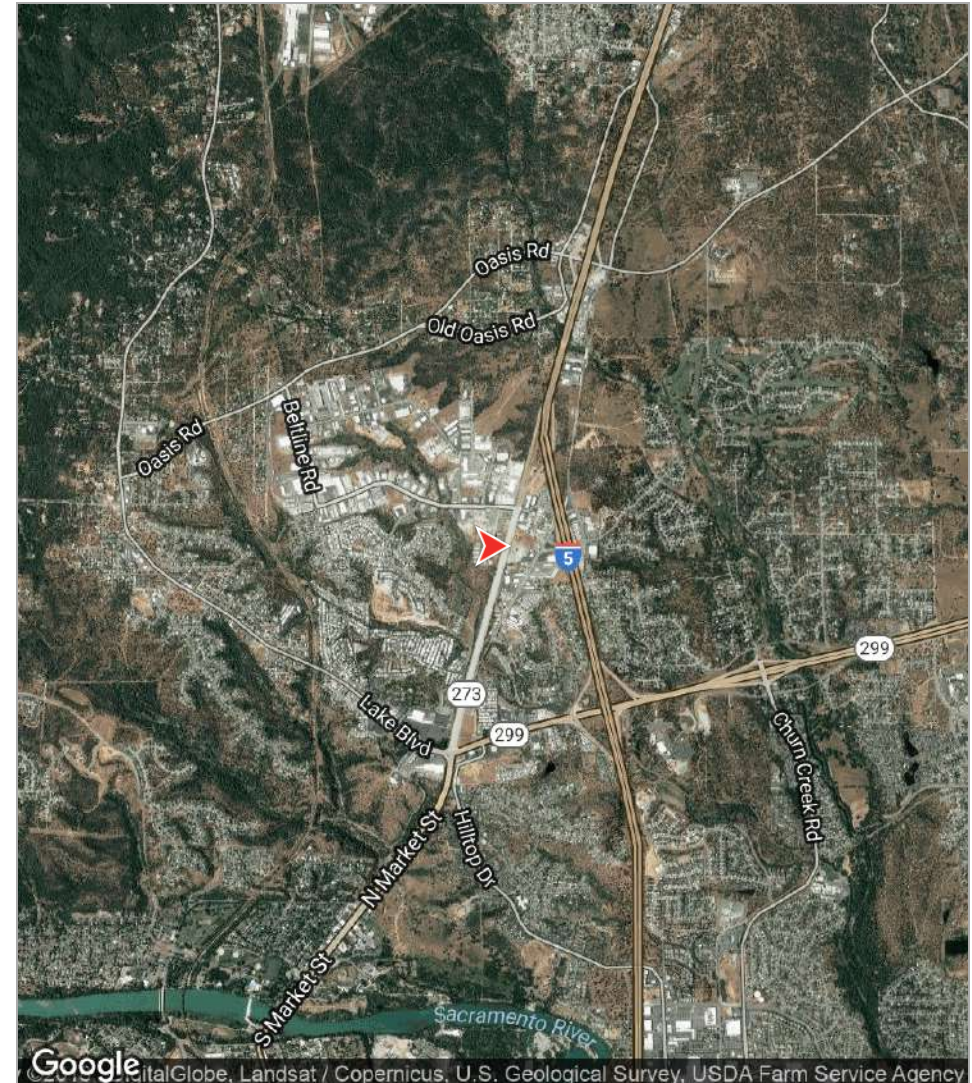
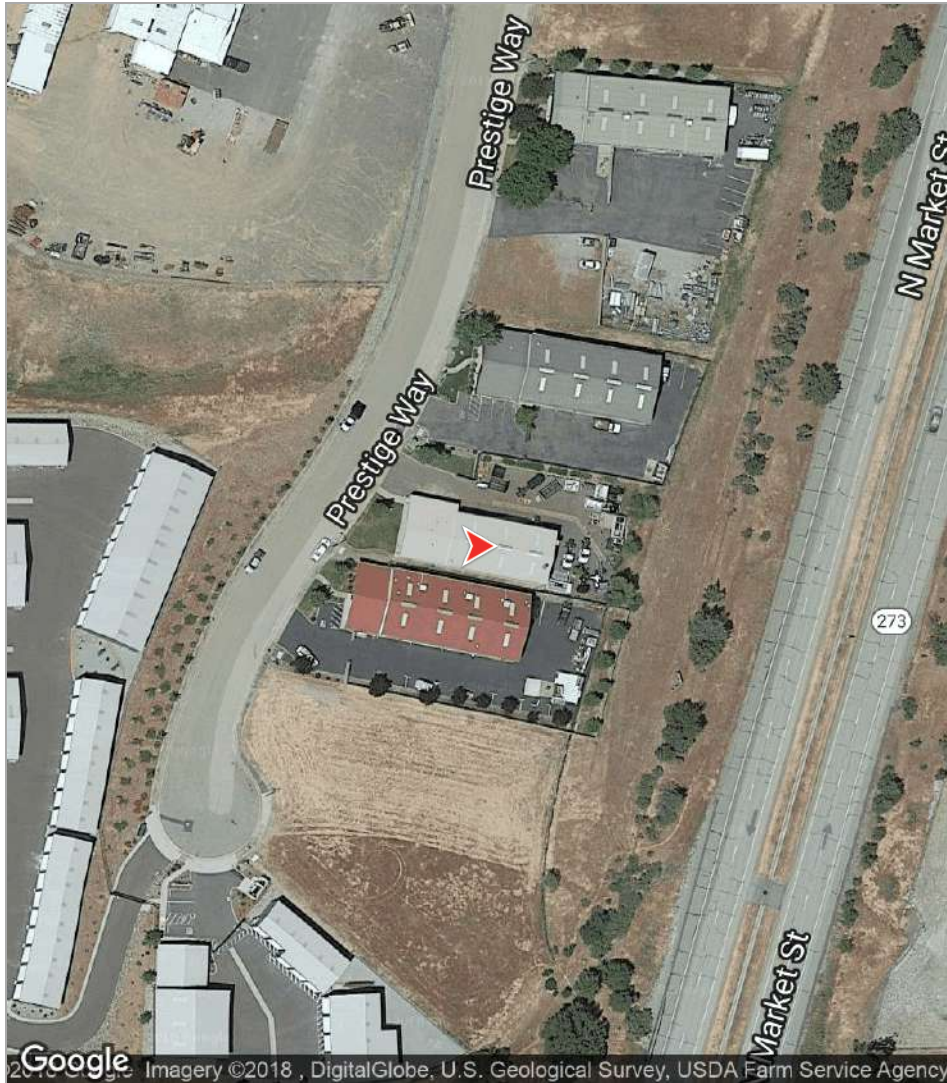
**RYAN HAEDRICH, CCIM** | 530.221.1127 X107 | [RYAN@HAEDRICH.COM](mailto:RYAN@HAEDRICH.COM) | CA CALBRE #01747622 | [WWW.HAEDRICH.COM](http://WWW.HAEDRICH.COM)

The information above has been obtained from sources believed reliable. While we do not doubt its accuracy we have not verified it and make no guarantee, warranty or representation about it. It is your responsibility to independently confirm its accuracy and completeness.

FOR LEASE

# LOCATION MAPS

1135 PRESTIGE WAY, REDDING, CA 96003



FOR MORE INFORMATION :

**RYAN HAEDRICH, CCIM** | 530.221.1127 X107 | [RYAN@HAEDRICH.COM](mailto:RYAN@HAEDRICH.COM) | CA CALBRE #01747622 | [WWW.HAEDRICH.COM](http://WWW.HAEDRICH.COM)

The information above has been obtained from sources believed reliable. While we do not doubt its accuracy we have not verified it and make no guarantee, warranty or representation about it. It is your responsibility to independently confirm its accuracy and completeness.