



# FOR LEASE

## RETAIL STOREFRONT / CORNER OFFICE

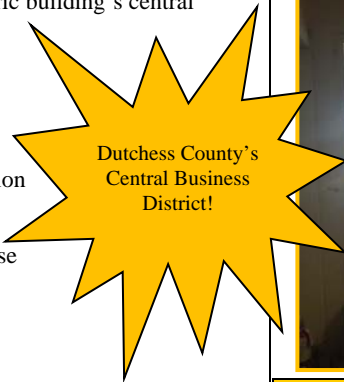
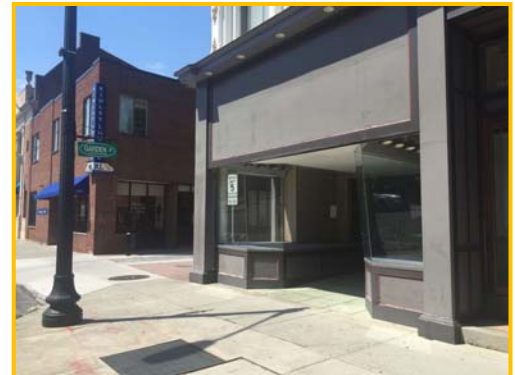
### THE CAST IRON BUILDING

### POUGHKEEPSIE, NEW YORK



## U.S. ROUTE 44 / NYS ROUTE 55 AREA

- **The Cast Iron Building**  
293 Main Street  
Main Street @ Garden Street  
Poughkeepsie, NY 12601
- **Location:** The Cast Iron building, located in Dutchess County's Central Business District, is a 6 block walk to and from the Metro-North Hudson Line, Poughkeepsie Train Station to Grand Central Terminal. The station serves MTA and Amtrak as well as local and regional bus services.
- **Description:** The Cast Iron Building was built in 1872 and is located in the historic district and heart of Downtown Poughkeepsie. The historic building's central location is perfect for any new or existing business.
- **Available Square Footage:** 1,500 ± SF  
*To Be Confirmed*
- **Type:** Retail Storefront / Corner Office  
Mosler Safe on Premises - ATM / Walk-up Location
- **Neighboring Offices:**  
Poughkeepsie City Court    Dutchess County Court House  
NY State Offices            Poughkeepsie Journal
- **Area Restaurants:**  
The Artist's Palate - [www.theartistspalate.biz](http://www.theartistspalate.biz)  
Brasserie 292 - [www.brasserie292.com](http://www.brasserie292.com)  
Mill House Brewing Company - [www.millhousebrewing.com](http://www.millhousebrewing.com)
- **Community Happenings:**  
The Chance Theater - [www.thechancetheater.com](http://www.thechancetheater.com)  
Mid-Hudson Civic Center - [www.midhudsonciviccenter.org](http://www.midhudsonciviccenter.org)  
Middle Main - [www.middlemain.com](http://www.middlemain.com)  
Walkway Over the Hudson - [www.walkway.org](http://www.walkway.org)



<b>Demographics:</b>	<u>3 Miles</u>	<u>5 Miles</u>	<u>7 Miles</u>
Population	64,095	93,657	126,804
Avg. HH Income	\$65,924	\$76,435	\$80,575
# of Households	23,151	33,927	46,723

- **Lease Price:** \$2,000 Per Month

\*\*ALL DATA BELIEVED TO BE ACCURATE BUT NOT WARRANTED\*\*



**CR Properties Group, LLC**  
295 Main Street  
Poughkeepsie, NY 12601

**Thomas M. Cervone**  
(845)485-3100  
tom@crproperties.com  
www.crproperties.com

