

TOK

COMMERCIAL

801 N. STILSON ROAD

NORTH BOISE MEDICAL OFFICE SPACE FOR LEASE / BOISE, ID 83703



CONVENIENT, NORTH BOISE
MEDICAL OFFICE

GALEN MILLER

208.947.0841

galen@tokcommercial.com

NICK SCHUITEMAKER, CCIM

208.947.0802

nick@tokcommercial.com

Located near the Veterans Memorial Park with walking/biking trails connecting to the Greenbelt.

Medical space with private offices and exam rooms with sinks.

Co-tenancy with Riverstone Family Health.

Building and monument signage.

Upgraded electrical service.

Professionally managed.

Ample shared parking.

SPACE	RSF	RATE
Suite 120	1,256 SF	\$17.00/SF, NNN
Suite 130	1,041 SF	\$17.00/SF, NNN
Suite 120+130	2,297 SF	\$17.00/SF, NNN

SUBMARKET	North	PARKING	Ample On-Site
BLDG. SIZE	6,352 SF	LEASE TERM	3+ Years
AVAILABLE	Immediately	EST. NNN	\$6.95/SF

CONTACT



HIGHLIGHTS



DETAILS



UPDATED: 4.22.2026

THIS PROPERTY IS EXCLUSIVELY MARKETED BY TOK BOISE LLC DBA TOK COMMERCIAL

This information was obtained from sources believed reliable but cannot be guaranteed. Any opinions or estimates are used for example only.

TOKCOMMERCIAL.COM



UPDATED: 4.22.2026

THIS PROPERTY IS EXCLUSIVELY MARKETED BY TOK BOISE LLC DBA TOK COMMERCIAL

This information was obtained from sources believed reliable but cannot be guaranteed. Any opinions or estimates are used for example only.

Suite 120

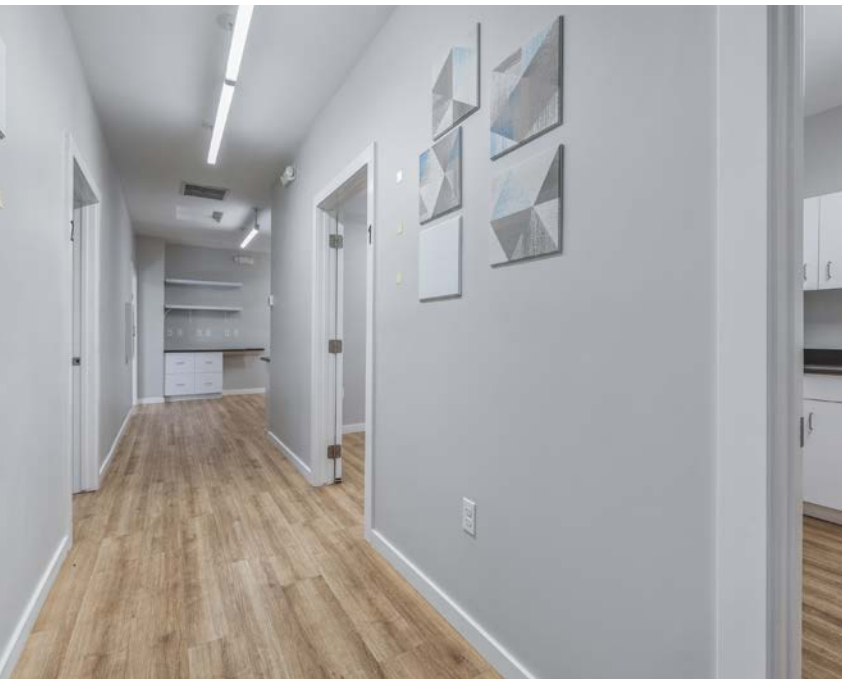


UPDATED: 4.22.2026

THIS PROPERTY IS EXCLUSIVELY MARKETED BY TOK BOISE LLC DBA TOK COMMERCIAL

This information was obtained from sources believed reliable but cannot be guaranteed. Any opinions or estimates are used for example only.

Suite 130



Willow Lane Athletic Complex

TOK

COMMERCIAL



MAIN ARTERIAL

SITE

VETERAN'S MEMORIAL PKWY

STATE STREET

MAIN ARTERIAL

DOWNTOWN BOISE

THE WATERFRONT DISTRICT

Luciano's THE YARDARM

Greenbelt Market PUSH & POUR