

# ELYRIA OHIO DEVELOPMENT OPPORTUNITY

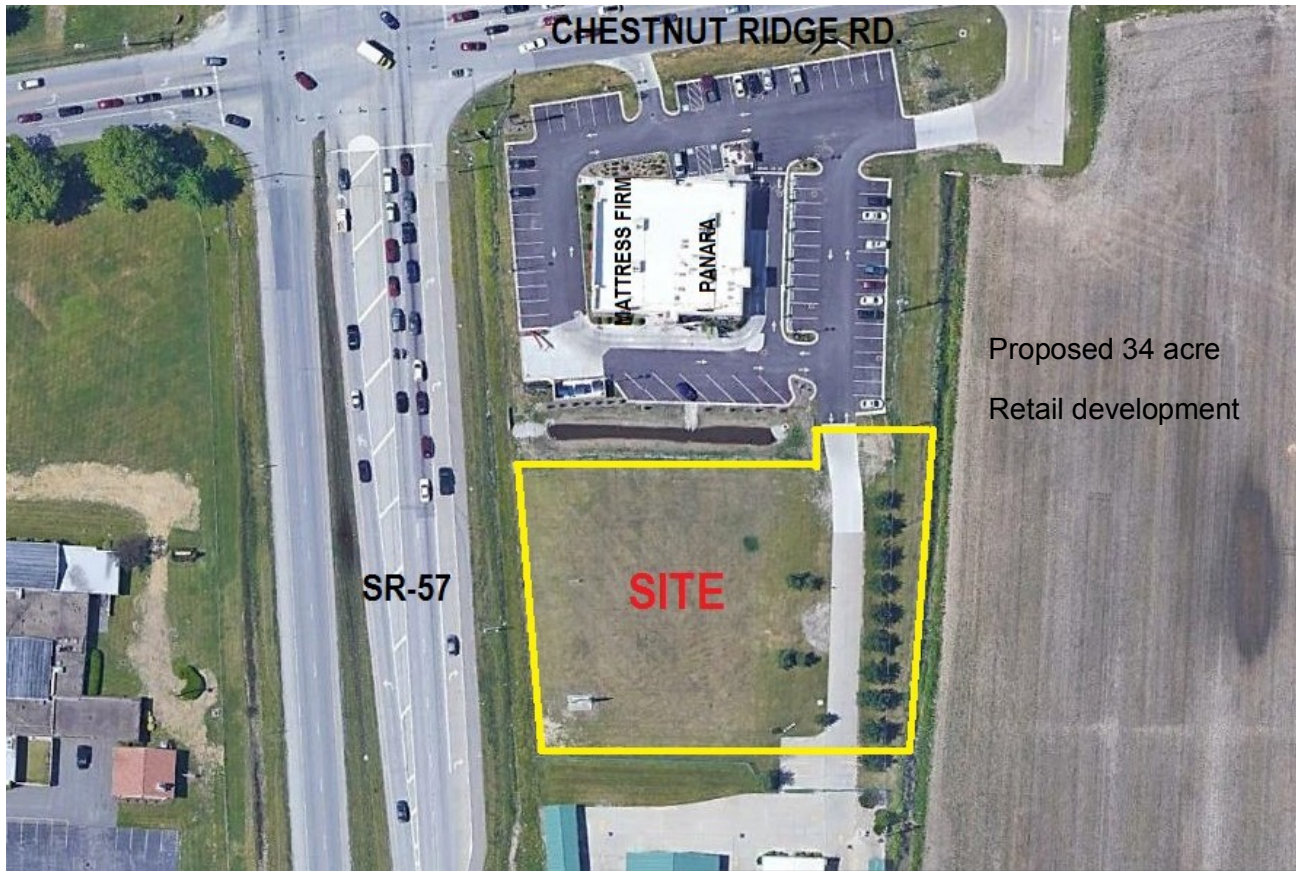
## GROUND LEASE OR BUILD TO SUIT

1.2 ACRES COMMERCIAL

203 FT. FRONTAGE ON SR-57

DIRECTLY ACROSS FROM CHESTNUT COMMONS SHOPPING CENTER

Excellent Visibility & Exposure SR-57 & Chestnut Ridge Rd.



COMPLETE DEMOGRAPHICS AVAILABLE ON REQUEST

For information please contact:

Ernest Alessio 440-396-6900

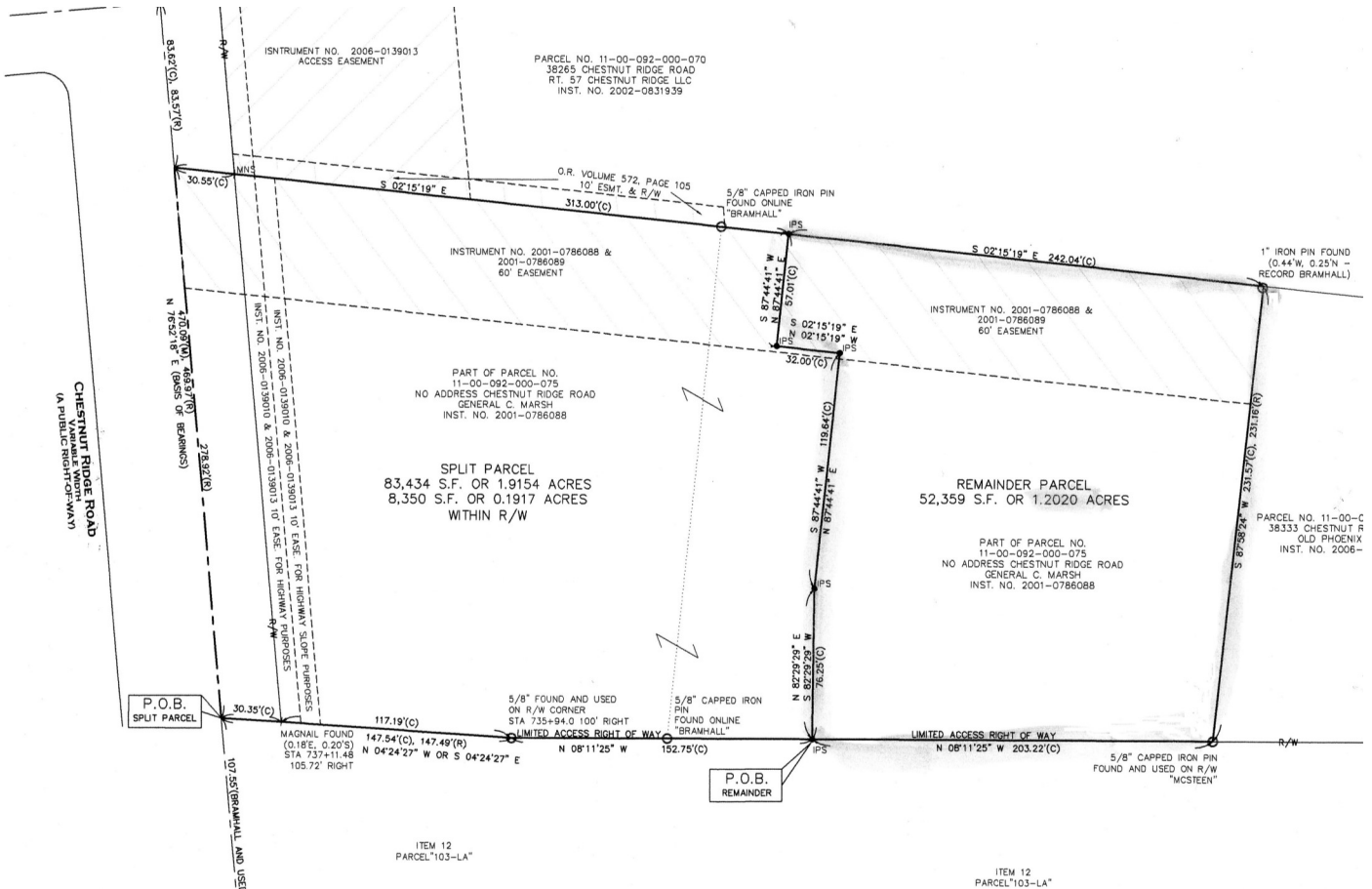
**ERNEST J. ALESSIO**

COMMERCIAL REAL ESTATE SERVICES LLC

440-396-6900

[alessiolc@msn.com](mailto:alessiolc@msn.com)

No warrantee or representation expressed or implied is made to the accuracy of the information contained herein. It is also subject to errors and omissions or changes.



# SUMMARY PROFILE

2000-2010 Census, 2017 Estimates with 2022 Projections  
 Calculated using Weighted Block Centroid from Block Groups

Lat/Lon: 41.3431/-82.0671

RS1

Elyria, OH 44035		1 mi radius	3 mi radius	5 mi radius
POPULATION	2017 Estimated Population	5,723	41,523	89,593
	2022 Projected Population	5,712	42,156	90,838
	2010 Census Population	5,850	40,757	87,958
	2000 Census Population	4,421	38,561	81,317
	Projected Annual Growth 2017 to 2022	-	0.3%	0.3%
	Historical Annual Growth 2000 to 2017	1.7%	0.5%	0.6%
	2017 Median Age	43.9	39.3	39.7
HOUSEHOLDS	2017 Estimated Households	2,319	17,226	36,018
	2022 Projected Households	2,376	17,994	37,578
	2010 Census Households	2,281	16,345	34,000
	2000 Census Households	1,695	15,088	30,500
	Projected Annual Growth 2017 to 2022	0.5%	0.9%	0.9%
	Historical Annual Growth 2000 to 2017	2.2%	0.8%	1.1%
RACE AND ETHNICITY	2017 Estimated White	89.3%	82.6%	82.3%
	2017 Estimated Black or African American	6.0%	11.3%	11.8%
	2017 Estimated Asian or Pacific Islander	1.5%	1.1%	1.3%
	2017 Estimated American Indian or Native Alaskan	0.1%	0.2%	0.2%
	2017 Estimated Other Races	3.2%	4.7%	4.4%
	2017 Estimated Hispanic	4.4%	4.7%	4.7%
INCOME	2017 Estimated Average Household Income	\$71,186	\$60,714	\$64,286
	2017 Estimated Median Household Income	\$64,362	\$54,426	\$56,831
	2017 Estimated Per Capita Income	\$29,039	\$25,292	\$26,513
EDUCATION (AGE 25+)	2017 Estimated Elementary (Grade Level 0 to 8)	0.9%	2.2%	2.3%
	2017 Estimated Some High School (Grade Level 9 to 11)	8.5%	8.7%	8.8%
	2017 Estimated High School Graduate	34.2%	33.4%	34.6%
	2017 Estimated Some College	24.1%	25.3%	24.9%
	2017 Estimated Associates Degree Only	12.2%	10.0%	9.6%
	2017 Estimated Bachelors Degree Only	11.9%	12.8%	12.6%
	2017 Estimated Graduate Degree	8.2%	7.6%	7.3%
BUSINESS	2017 Estimated Total Businesses	128	1,561	3,019
	2017 Estimated Total Employees	1,161	26,199	43,004
	2017 Estimated Employee Population per Business	9.1	16.8	14.2
	2017 Estimated Residential Population per Business	44.7	26.6	29.7

This report was produced using data from private and government sources deemed to be reliable. The information herein is provided without representation or warranty.

