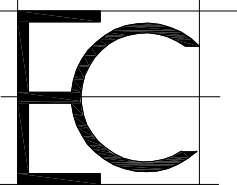


297 NEWBURY STREET

Boston, MA



Existing Conditions Surveys Inc.
398 Columbus Avenue #334
Boston, MA 02116 USA

T 617.247.9161
F 617.249.0746
E info@existingconditions.com
www.existingconditions.com

The Most Accurate Existing Conditions Surveys and As-Built Surveys™

All projects are measured using the most advanced laser measuring equipment and our best standards and practices. All work will be field verified by client prior to design or construction or other use, please visit www.existingconditions.com for terms and conditions of use.

www.existingconditions.com

General Notes:
1. It is expressly understood by client that ECS is not an architect or engineering entity. None of the documents prepared by ECS for client shall have any stamping or certification of such trade professionals.
2. This is not a structural or MEP analysis or due diligence model. Visible and accessible elements are modeled for location and size. Further structural or MEP analysis could be necessary by others.
3. STANDARD OF PRACTICE: Services performed by ECS under this Agreement will be conducted in a manner consistent with that level of care and skill ordinarily exercised by members of the profession currently practicing in the same locality under similar conditions. No other representation, expressed or implied, and no warranty or guarantee is included or intended in this Agreement, or in any report, opinion, document or otherwise.

Laser Scanning Notes:
1. Terrestrial laser scanning equipment utilized by ECS, Inc. is able to achieve levels of accuracy down to 2mm at 20 meters, per FARO, the manufacturer, specifications, see www.faro.com
2. Laser scanning equipment uses light waves to measure distances, unforeseen site conditions such as dust, moisture, vibration, surface reflectivity, lighting conditions, temperature, humidity, ferromagnetic materials, building configuration etc. may impact registration between scan locations.
3. Accuracy over long distances can be improved if the client provides survey benchmarks prior to scanning in order to reference the laser scan data into a coordinate system.
4. The Revit file contains the most complete alignment of point cloud data. All laser scanning by default is in a localized coordinate system. Laser scans completed on multiple days may be tied into previous laser scans by use of site specific features and targets. Final point cloud adjustments are made in Revit for a final verification.

Revision Schedule

Revision Number	Revision Description	Revision Date

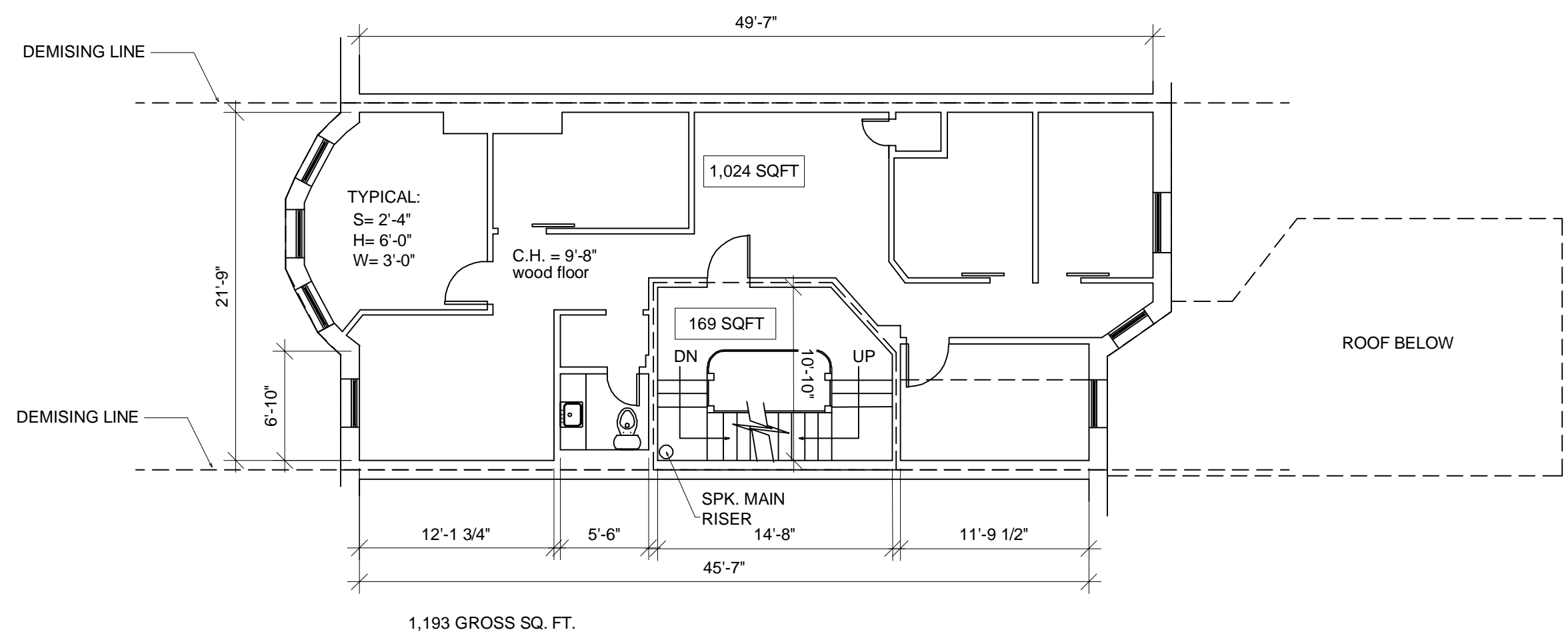
Existing Floor Plans

Date: 3-08-18

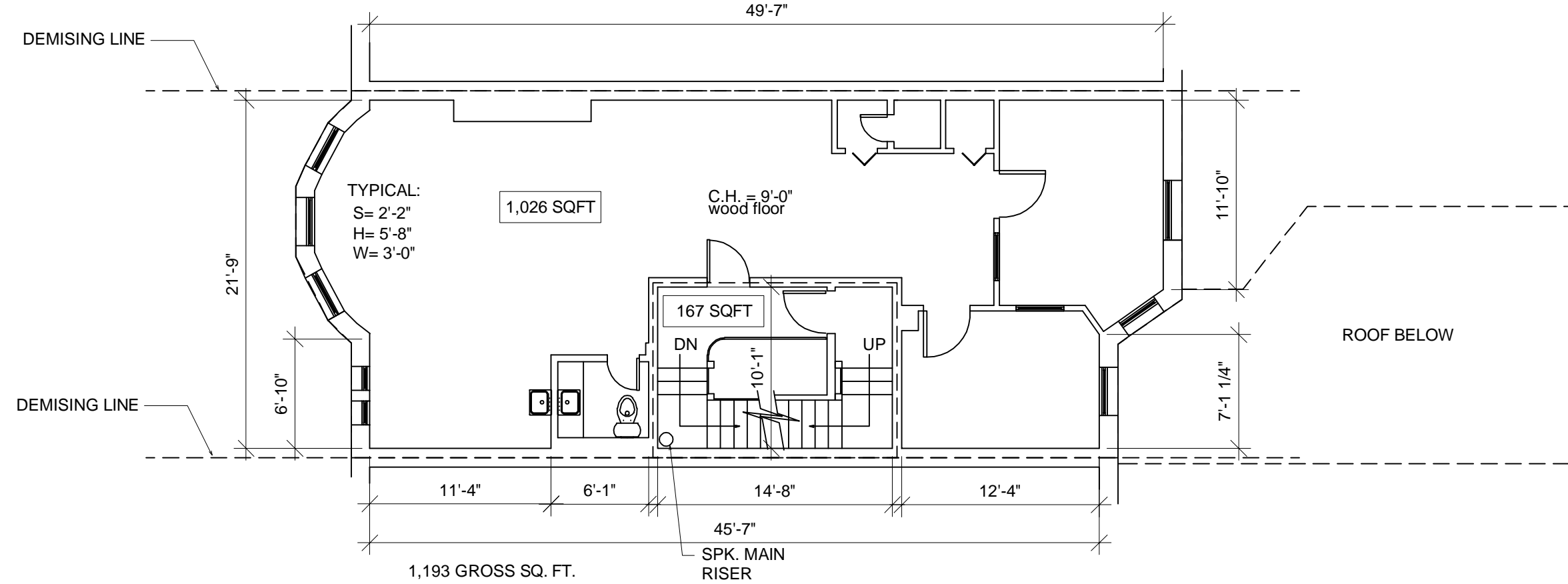
Scale: 1/8" = 1'-0"

Drawn By: ECS

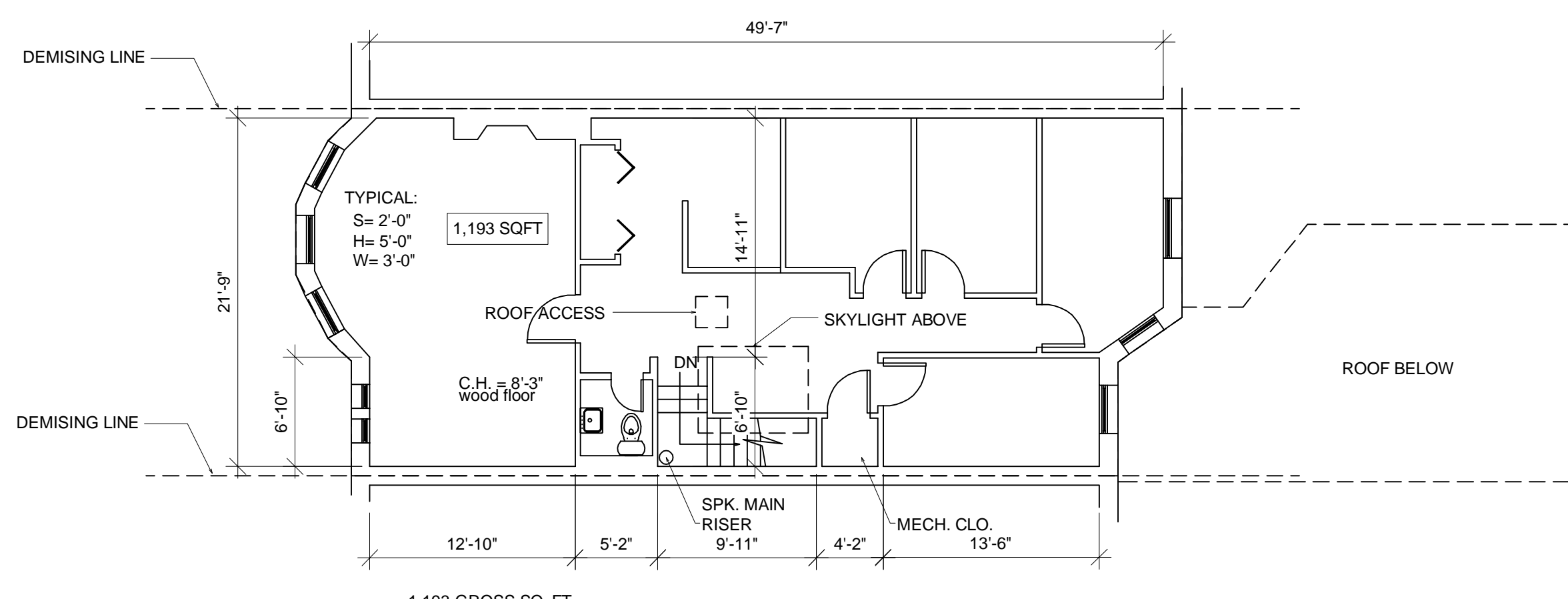
EX01



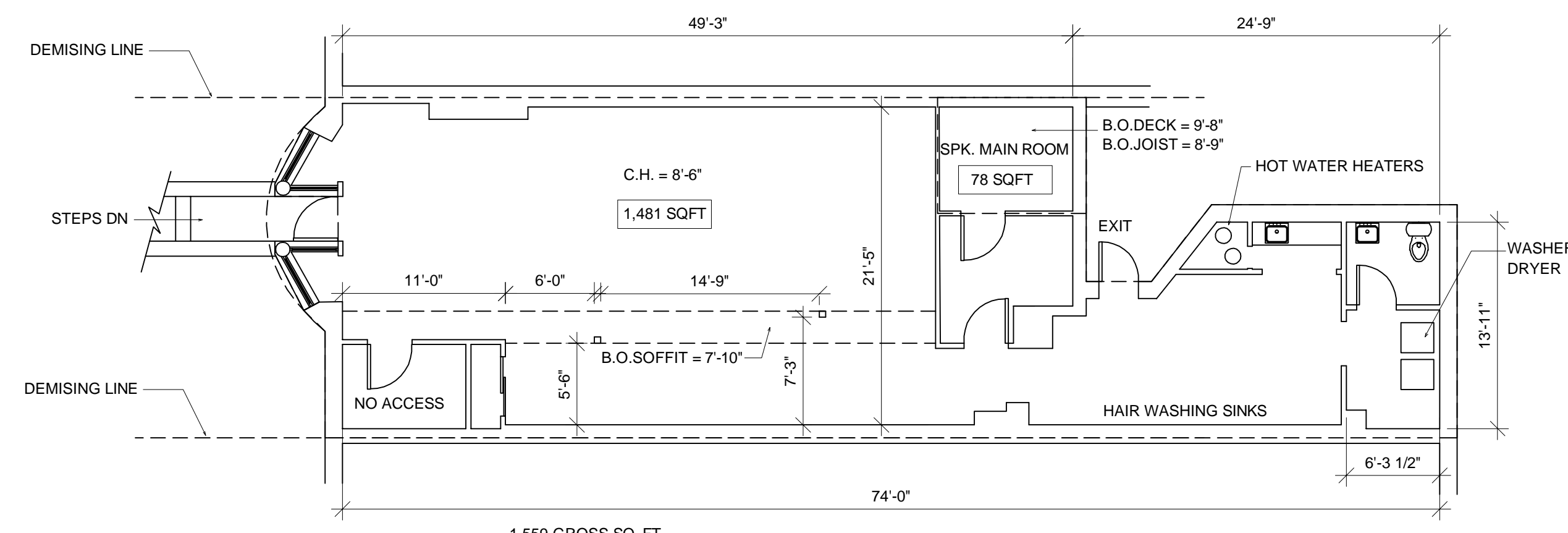
③ Second Floor Plan
1/8" = 1'-0"



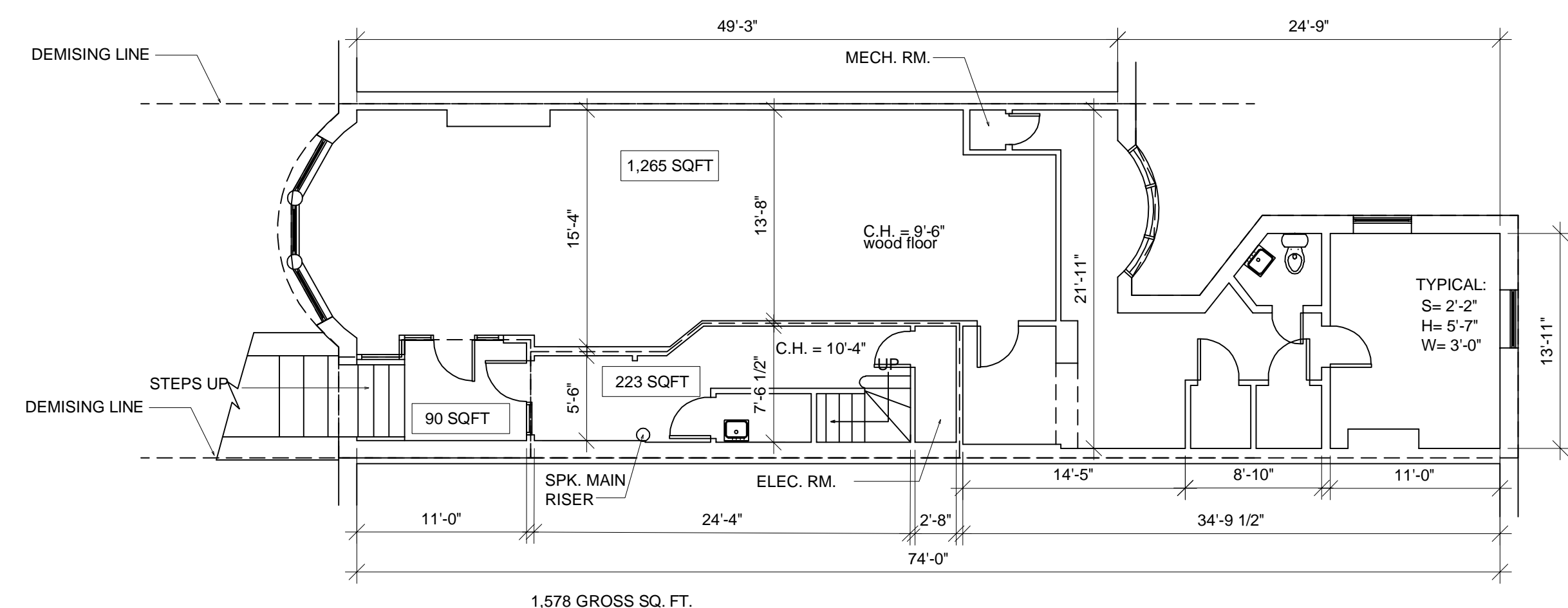
④ Third Floor Plan
1/8" = 1'-0"



⑤ Fourth Floor Plan
1/8" = 1'-0"



① Ground Level Floor Plan
1/8" = 1'-0"



② First Floor Plan
1/8" = 1'-0"