

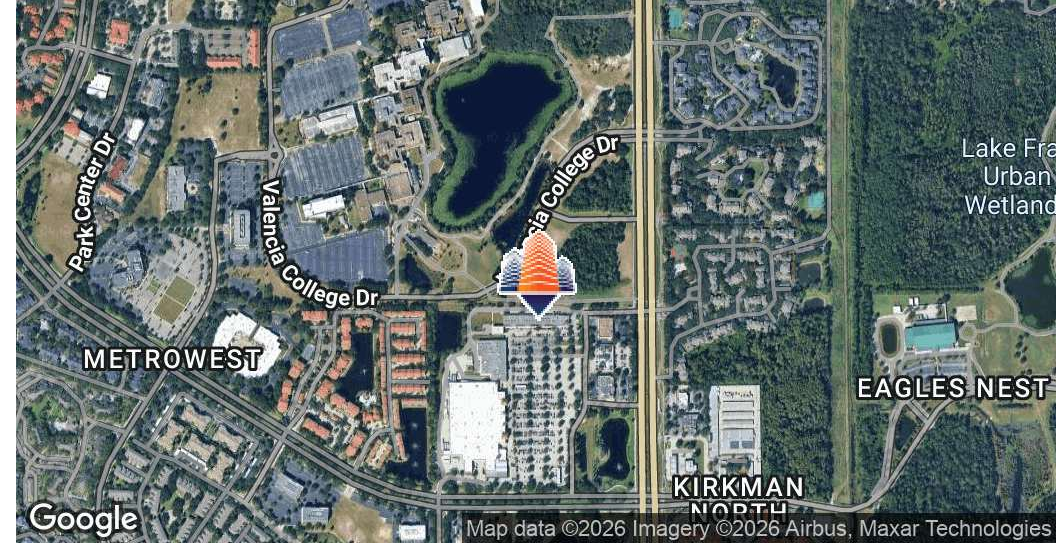
Metro Pointe

5920 Metropolis Way, Orlando, FL 32811



EQUITY
INVESTMENT
SERVICES

PROPERTY SUMMARY



PROPERTY HIGHLIGHTS

- 4,828 SF endcap space available for lease
- Ground lease / outparcel opportunities available
- Co-tenants include Planet Fitness, Sanitas Medical, Spectrum, Metro PCS and more!
- Shadow-anchored by adjacent Walmart Supercenter
- Excellent retail synergy with seamless access to multiple neighboring plazas
- Prime corridor with heavy traffic & robust national retail presence
- Monument signage available
- Situated with favorable proximity/access to major roads/highways including: I-4, 408, Conroy Rd & HWY 50
- Full cross access / shared parking available with Walmart

[CLICK HERE FOR FLOOR PLAN](#)

OFFERING SUMMARY

Lease Rate:	Negotiable
Available SF:	4,828 SF
Lot Size:	4.4 Acres
Building Size:	38,017 SF

DEMOGRAPHICS	1 MILE	3 MILES	5 MILES
Total Households	9,334	45,005	105,921
Total Population	24,046	122,002	291,275
Average HH Income	\$72,767	\$79,184	\$81,972

Casey Dorner

407.404.4017

CDorner@eisre.com

Eric Portnoy

954.242.2010

EPortnoy@eisre.com



7575 Dr. Phillips Blvd, Ste 390

Orlando, FL 32819

www.eisre.com

Metro Pointe

5920 Metropolis Way, Orlando, FL 32811

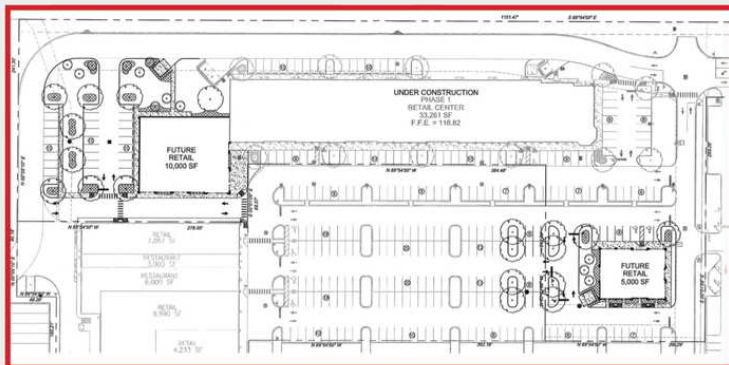


EQUITY
INVESTMENT
SERVICES

SITE PLAN

TENANT ROSTER

5944	SPECTRUM	3,850 SF
101-104	SANITAS	6,000 SF
105	SAN JULIANS CAFE "COMING SOON"	1,454 SF
106-107	METRO BY TMOBILE	2,905 SF
108-116	PLANET FITNESS	13,000 SF
117	LORA B SALON	1,451 SF
118-119	SILVA'S MARKET	2,900 SF
120-122	AVAILABLE FUTURE RETAIL	4,828 SF 5,000 SF



Casey Dorner
407.404.4017
CDorner@eisre.com

Eric Portnoy
954.242.2010
EPortnoy@eisre.com



7575 Dr. Phillips Blvd, Ste 390
Orlando, FL 32819
www.eisre.com

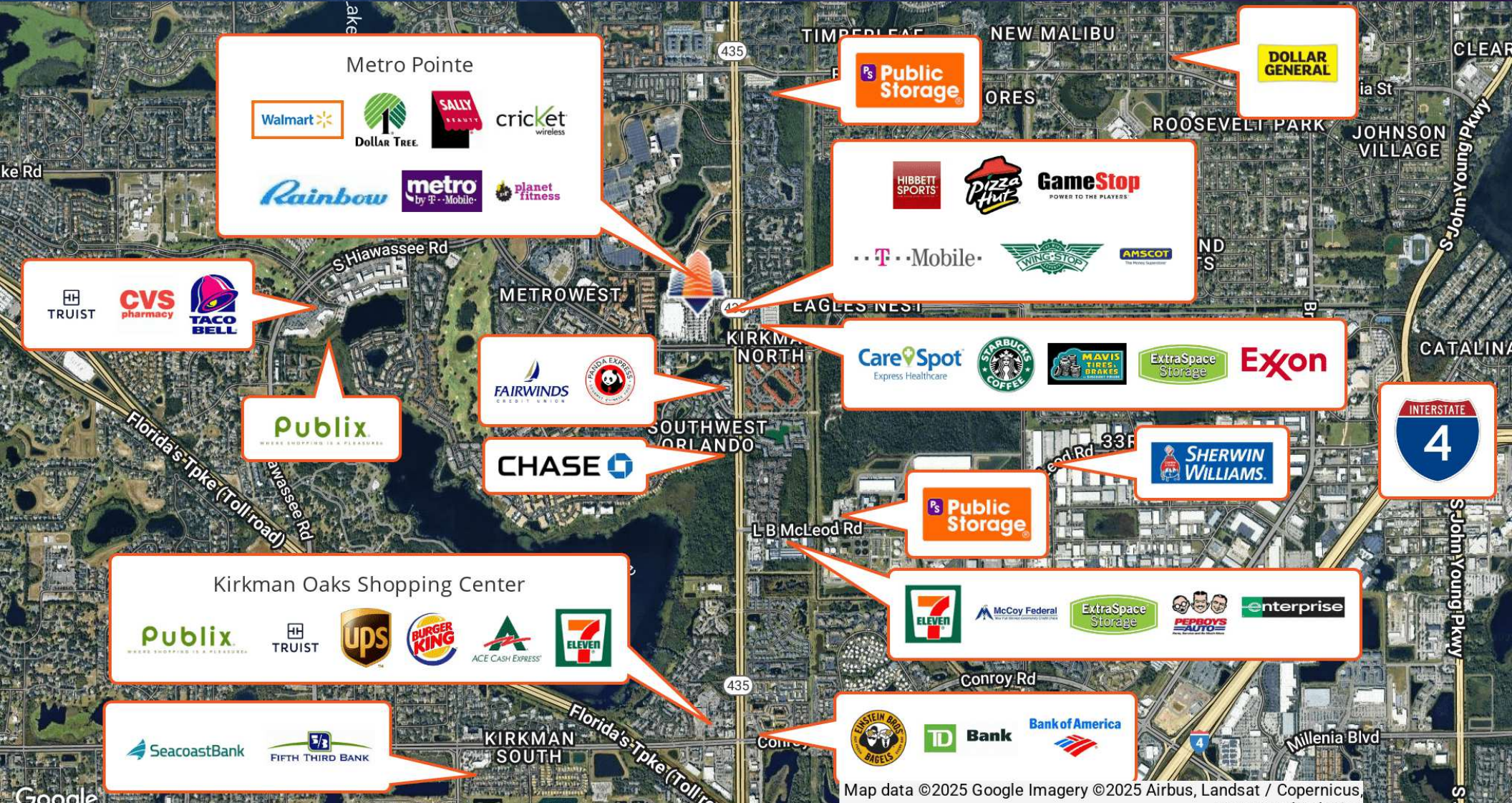
Metro Pointe

5920 Metropolis Way, Orlando, FL 32811



EQUITY
INVESTMENT
SERVICES

RETAILER MAP



Casey Dorner

407.404.4017

CDorner@eisre.com

Eric Portnoy

954.242.2010

EPortnoy@eisre.com



7575 Dr. Phillips Blvd, Ste 390

Orlando, FL 32819

www.eisre.com

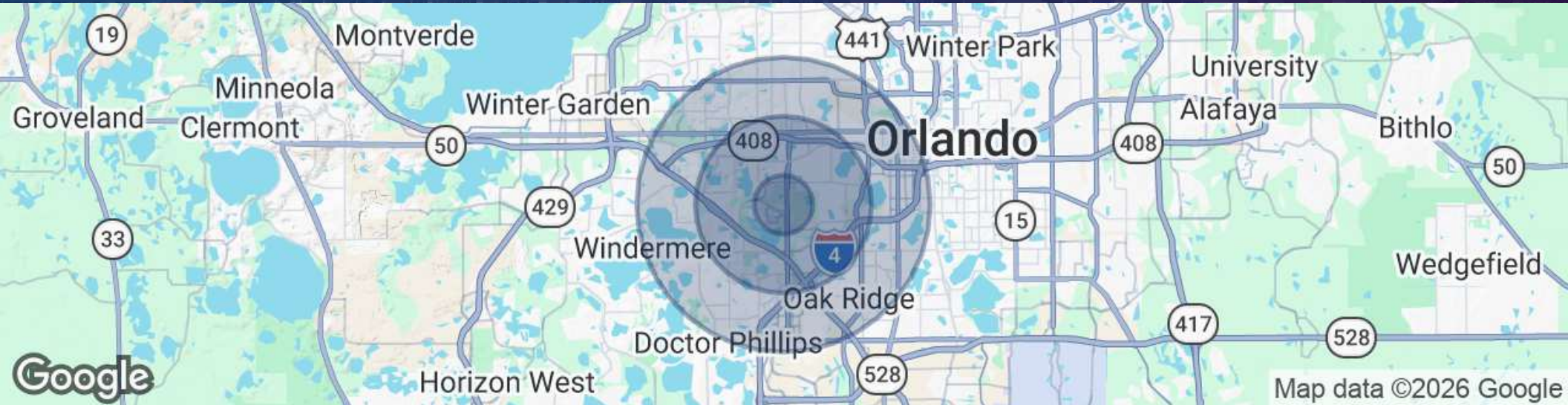
Metro Pointe

5920 Metropolis Way, Orlando, FL 32811



EQUITY
INVESTMENT
SERVICES

DEMOGRAPHICS MAP & REPORT



POPULATION	1 MILE	3 MILES	5 MILES
Total Population	24,046	122,002	291,275
Average Age	35	37	38
HOUSEHOLDS & INCOME	1 MILE	3 MILES	5 MILES
Total Households	9,334	45,005	105,921
# of Persons per HH	2.6	2.7	2.7
Average HH Income	\$72,767	\$79,184	\$81,972
Average House Value	\$262,286	\$323,287	\$353,934

Casey Dorner

407.404.4017

CDorner@eisre.com

Eric Portnoy

954.242.2010

EPortnoy@eisre.com



7575 Dr. Phillips Blvd, Ste 390

Orlando, FL 32819

www.eisre.com