

Kettering S. Dixie Restaurant Space Available For Lease

2801 S Dixie Drive, Suite #2 | Kettering, OH



Property Summary

County	Montgomery
Property Type	Restaurant
Zoned	Commercial
Available	3,000 SF +/-
Lease Price	\$12 per sf
Loopnet ID	

All information furnished is from sources deemed reliable and is subject to errors, omissions and changes prior to sale as withdrawal without notice.

For more information contact:



Mark Langdon
Commercial Sales
Associate
Office: 937.684.9847
Cell: 937.673.1916
mlangdon@hsabh.com

Property Description:

- This available restaurant space is the last available space located within a newly occupied demised building. A very large kitchen with some commercial fixtures remaining, walk-in cooler, dish tank, etc., makes this a great opportunity for a food service location. Large parking area and visible from S Dixie Drive located between a Super WalMart and a large bowling center. Possible conversion to a bar or various other uses. Included in the center is a large Asian grocery, Noodle Restaurant and a small coffee shop.

Location Highlights:

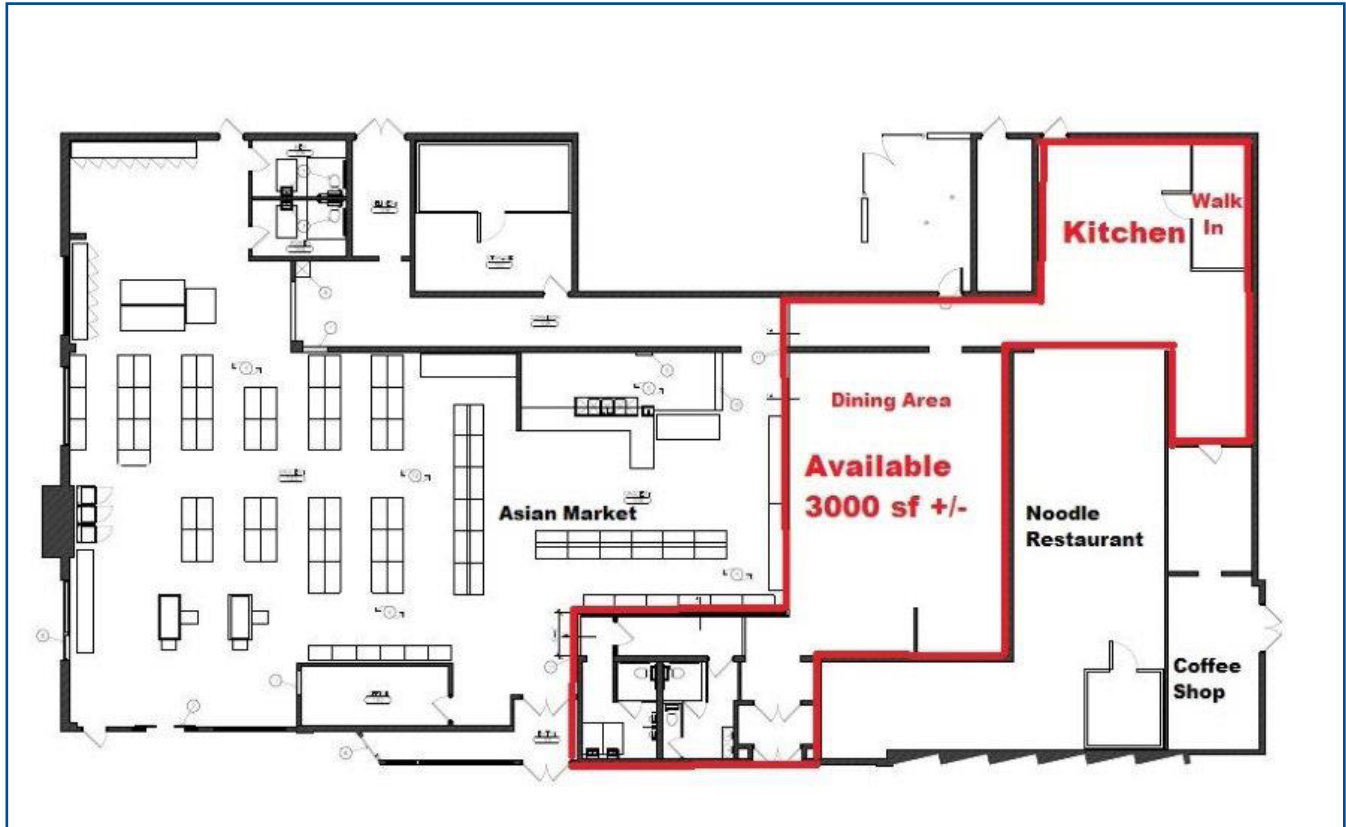
- Located on S Dixie Drive between downtown Dayton and the South suburbs.
- One block from the intersection of W. Dorothy Lane.
- Traffic Counts are over 17,000 vpd. "Going Home" side of Dixie.

Learn more about our services—visit www.schuelergroup.com today!

3000-G Henkle Drive | Lebanon, OH 45036 | 513.932.6010 | 800.589.7535

Floor Plan

2801 S Dixie Drive, Suite #2 | Kettering, OH



Learn more about our services—visit www.schuelergroup.com today!

3000-G Henkle Drive | Lebanon, OH 45036 | 513.932.6010 | 800.589.7535

Additional Photos

2801 S Dixie Drive, Suite #2 | Kettering, OH



Learn more about our services—visit www.schuelergroup.com today!

3000-G Henkle Drive | Lebanon, OH 45036 | 513.932.6010 | 800.589.7535