



*“Your own front door
on the square...”*

2 & 3
GOLDEN
SQUARE

—Welcome

Proud and prominent, overlooking Soho's premier square. 2&3 Golden Square has been comprehensively refurbished to provide 2,459 sq ft of prime, contemporary office space.



Specification

- Commissionaire
- New reception
- Plaster ceiling
- Raised wooden access floor
- Contemporary LED lighting
- Exposed beams and columns
- Air conditioning
- Own front door



Reception



Painted columns



Window detail

Walking times

Piccadilly Circus		4 mins
Oxford Circus		8 mins
Leicester Square		9 mins
Tottenham Court Rd		12 mins
Tottenham Court Rd Crossrail		12 mins

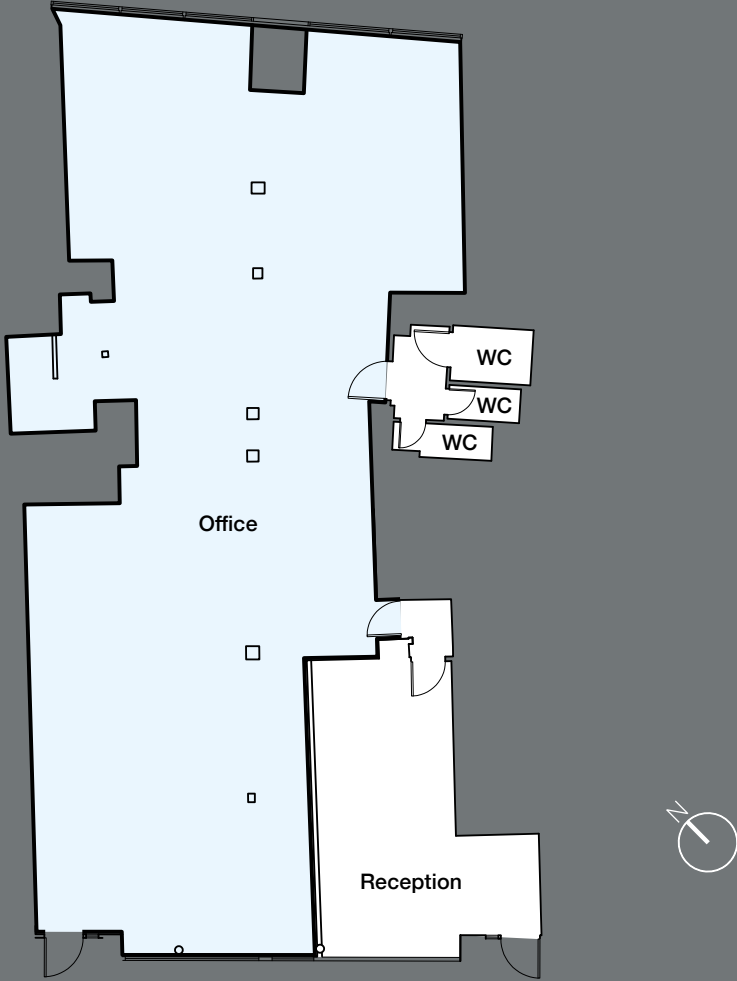
Walking times sourced from Google Maps.



Golden Square



Exterior at night



Ground Floor

Ground floor accommodation

Floor	Sq ft	Sq m
Ground Floor	2,459	228

Joint agents

Bluebook

Joe Fuller
020 7167 6401
joe@bluebooklondon.co.uk

Robbie Rowan
020 7167 6407
robbie@bluebooklondon.co.uk

Colliers

Richard Townsend
020 7487 1759
richard.townsend@colliers.com

James Swan
020 7487 1801
james.swan@colliers.com

Floor plans are for indicative purposes only and not to scale.

Misrepresentation act: IMPORTANT. These particulars do not form part of any contract. Bluebook London or Colliers nor any of their directors, employees or agents are authorised to give or make any warranty or representation on behalf of any party. Whilst information and particulars are given in good faith, intending purchasers or tenants must satisfy themselves independently as to the accuracy of all matters on which they intend to rely. All negotiations are subject to contract. May 2018. Design by bandstand LTD | 020 7494 8800