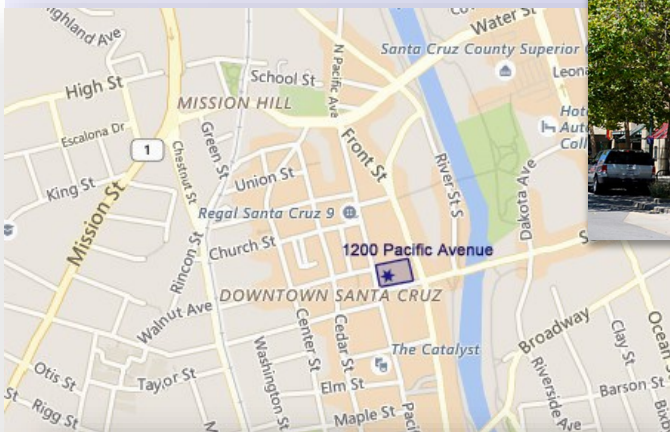


# AVAILABLE FOR SUBLEASE

## 1200 PACIFIC AVE., SANTA CRUZ

**PREMIER OFFICE  
SPACE FOR LEASE**

◆  
**DOWNTOWN  
SANTA CRUZ**



### 1200 PACIFIC AVENUE - SUITE 250

- One of the Highest Quality Office Buildings in Downtown Santa Cruz
- Walk to All Downtown Amenities From Your Front Door
- Direct Connection to Parking Structure
- Located in the Heart Santa Cruz's Downtown Business Corridor
- Easy Access to Highways 1 and 17

**SUITE 250: +/- 3,463 SF  
\$1.65 SF/MO NNN (\$0.60)**



Call us:  
**(831) 454-9400**

**JIM WISEMAN**

DRE #01104278

[jwiseman@sheldonwiseman.com](mailto:jwiseman@sheldonwiseman.com)

**STEVEN SHELDON**

DRE #01028650

[ssheldon@sheldonwiseman.com](mailto:ssheldon@sheldonwiseman.com)



*While the information contained herein is deemed reliable, we cannot guarantee its accuracy. All information should be verified.*

1200 Pacific Avenue, Suite 390 ■ Santa Cruz, CA 95060  
Tel: 831 • 454 • 9400 ■ Fax: 831 • 459 • 7988 ■ [www.sheldonwiseman.com](http://www.sheldonwiseman.com)

**INTEGRITY ■ SERVICE ■ RESULTS**



# INTERIOR — SUITE 250

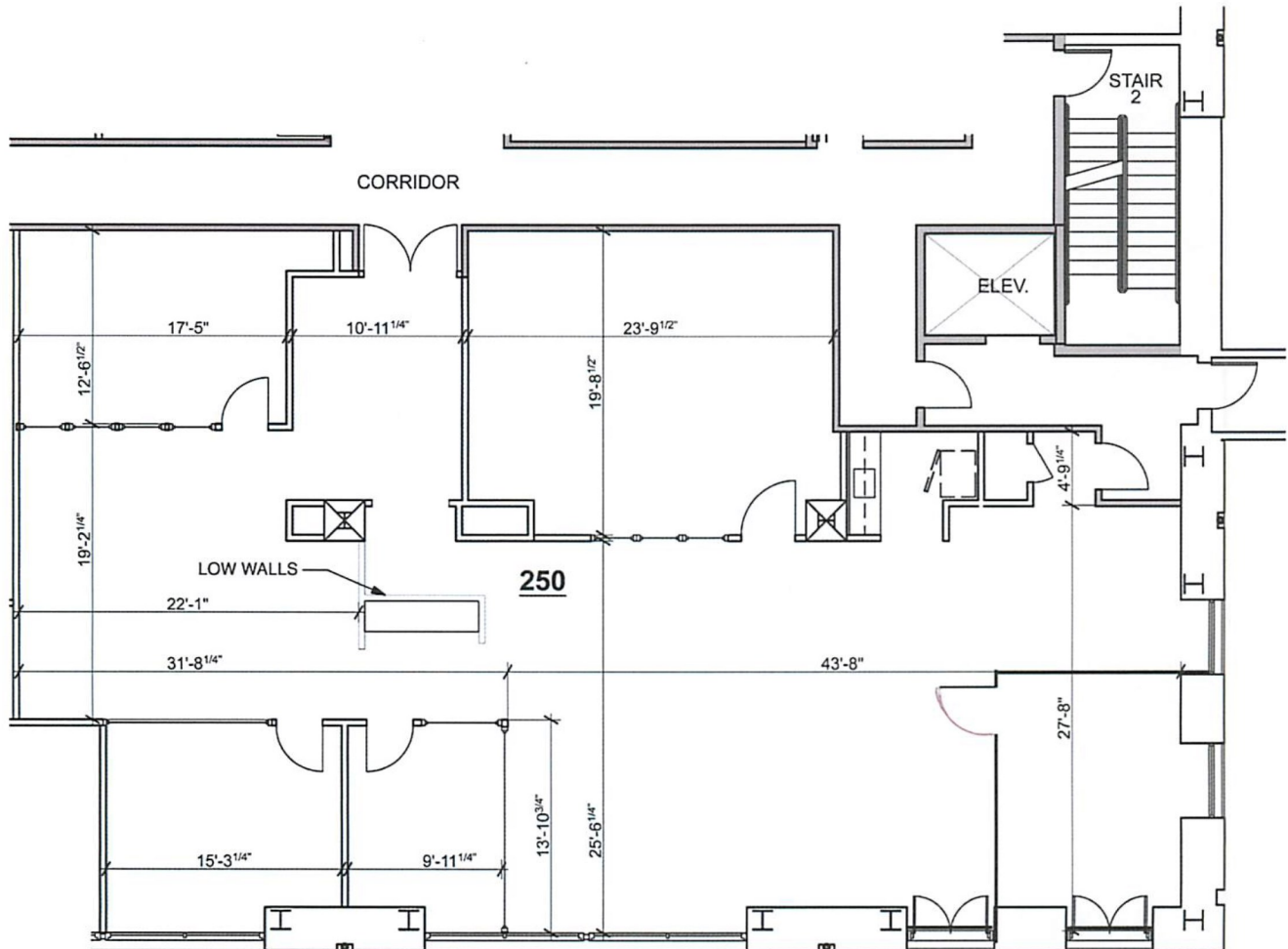


*While the information contained herein is deemed reliable, we cannot guarantee its accuracy. All information should be verified.*

INTEGRITY ■ SERVICE ■ RESULTS



# FLOOR PLAN — SUITE 250



**SUITE 250 FLOOR PLAN**

SCALE: 1/8" = 1'-0"

**SUITE 250 +/- 3,463 SF**

*While the information contained herein is deemed reliable, we cannot guarantee its accuracy. All information should be verified.*

**INTEGRITY ■ SERVICE ■ RESULTS**

