

FOR LEASE

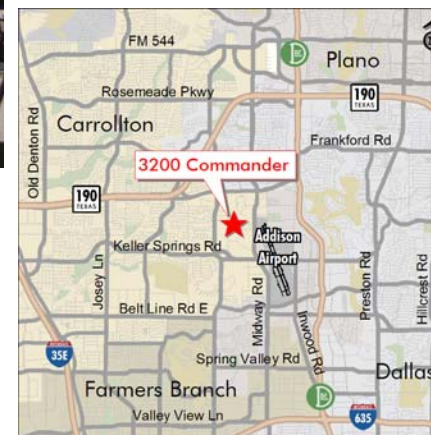
±23,032 SF Office/Warehouse

**3200 COMMANDER DRIVE, SUITE 100
:: CARROLLTON, TX**



FEATURES:

- ±25,151 SF total building size
 - ❖ ±8,445 SF production area
 - ❖ ±8,445 SF office
 - ❖ ±8,261 SF warehouse
- End cap
- ±22' clear height
- (3) dock doors with levelers
- Security lighting
- Ample parking
- Professionally landscaped
- Excellent corporate location with easy access to major thoroughfares



**FOR MORE
INFORMATION
PLEASE CONTACT**

Corbin Crews, CCIM
214.979.6353
corbin.crews@cbre.com

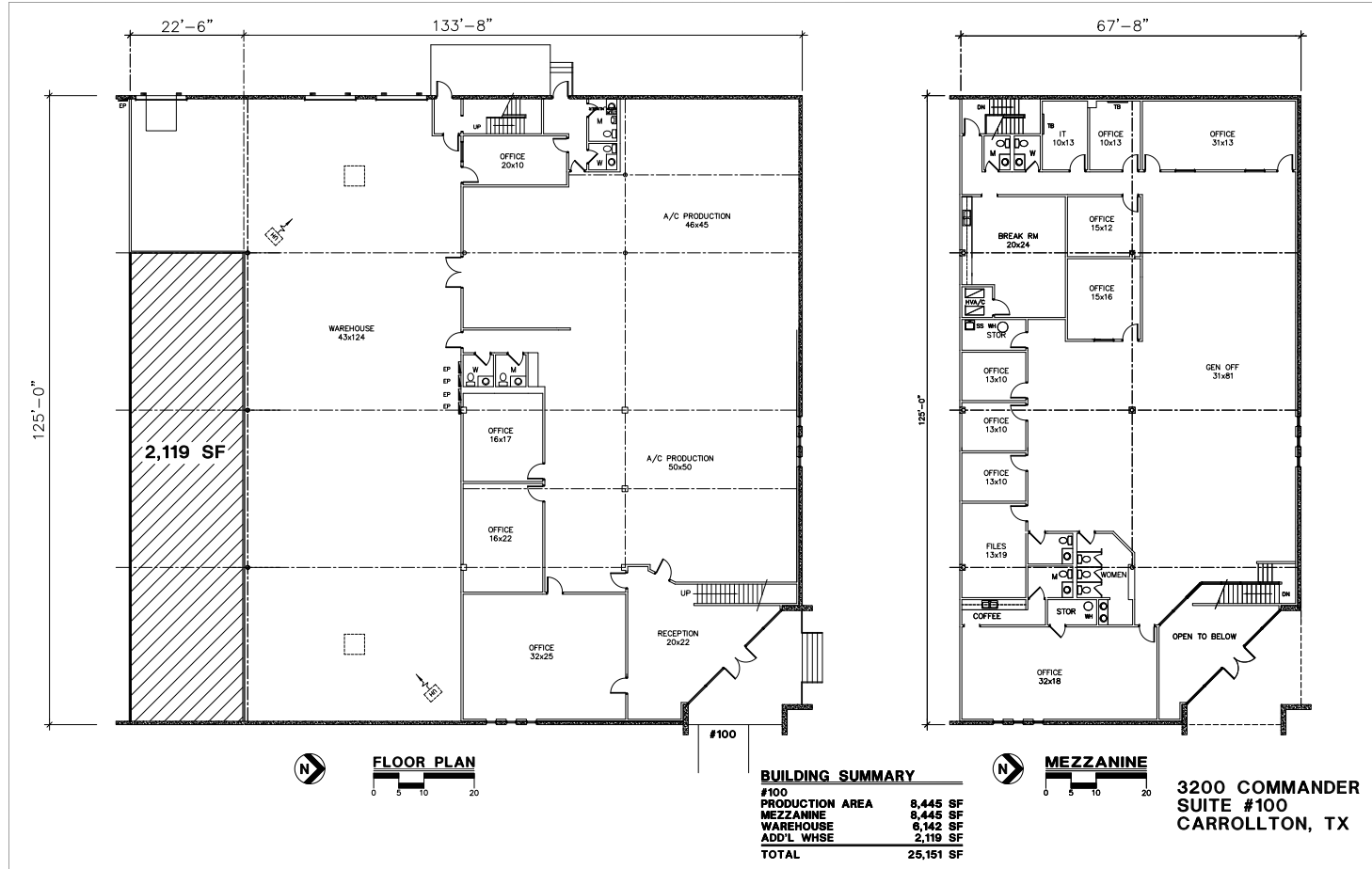
CBRE
CB RICHARD ELLIS

FOR LEASE

±23,032 SF
Office/Warehouse

3200 COMMANDER DRIVE, SUITE 100
:: CARROLLTON, TX

FLOOR PLAN:



3200 COMMANDER SUITE #100
CARROLLTON, TX

FOR MORE INFORMATION PLEASE CONTACT

Corbin Crews, CCIM

214.979.6353

corbin.crews@cbre.com

CB Richard Ellis | 2100 Ross, Suite 400 | Dallas, TX 75204 | www.cbre.com/dfw

©2009 CB Richard Ellis, Inc. The information above has been obtained from sources believed reliable. While we do not doubt its accuracy, we have not verified it and make no guarantee, warranty or representation about it. It is your responsibility to independently confirm its accuracy and completeness.

CBRE
CB RICHARD ELLIS