

FOR SALE

LAND FOR DEVELOPMENT

WEST STREETSBORO RD (RTE 303 & I-271)

RICHFIELD TOWNSHIP, OHIO 44286



PROPERTY DETAILS

- PRICE REDUCED
- ± 1.72 acre site with approximately 220 feet of frontage along Rte 303
- Located less than a half mile from the I-271/Rte 303 interchange with excellent access to Akron and Cleveland
- Zoned C-2 Commercial Highway District



CONTACT US

BILL STEPHENS

Associate
+1 216 363 6401 (O)
+1 330 212 5408 (M)
william.stephensjr@cbre.com

CBRE, INC.

950 Main Avenue
Suite 200
Cleveland, OH 44113

www.cbre.us/cleveland

CBRE

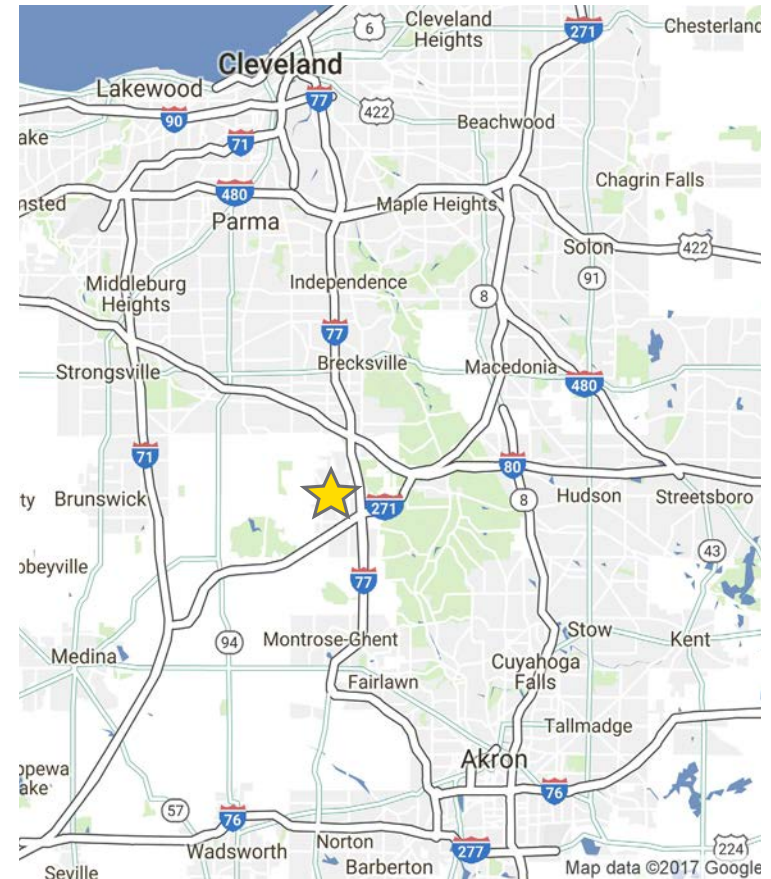
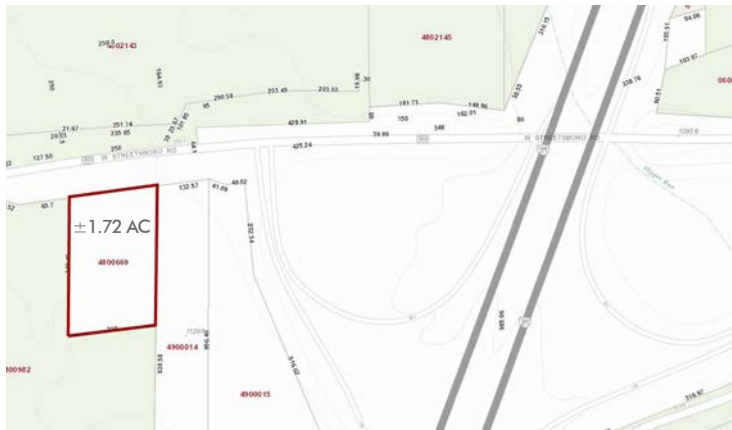
FOR SALE LAND DEVELOPMENT OPPORTUNITY

**WEST STREETSBORO RD
(RTE 303 & I-271)**
Richfield Township, OH 44286



PROPERTY INFORMATION

- + Parcel Number: 48-00669
Acreage: Approximately 1.72 acres
- + Approximately .25 miles West of I-271 interchange, south side of roadway, across street from former Coliseum location
- + Utilities are available at W Streetsboro Road (Route 303).



© 2017 CBRE, Inc. All rights reserved. This information has been obtained from sources believed reliable, but has not been verified for accuracy or completeness. Any projections, opinions, or estimates are subject to uncertainty. The information may not represent the current or future performance of the property. You and your advisors should conduct a careful, independent investigation of the property and verify all information. Any reliance on this information is solely at your own risk. CBRE and the CBRE logo are service marks of CBRE, Inc. and/or its affiliated or related companies in the United States and other countries. All other marks displayed on this document are the property of their respective owners. Photos herein are the property of their respective owners and use of these images without the express written consent of the owner is prohibited. Licensed Real Estate Broker.

www.cbre.us/cleveland

CBRE