

1ST STREET PROJECT



New Retail Development in Camas, Washington

- Located at the signalized corner of NE 197th Avenue & SE 1st Street in Camas, Washington
- Anchor space available up to 10,000 SF
- Drive-thru spaces available
- Adjacent to Lacomas Crossing, anchored by Costco and Union High School with over 2,000 students
- NE 1st Street – 10,106 ADT
NE 192nd Avenue – 22,186 ADT
- Call for rates

DEMOGRAPHICS (2018)

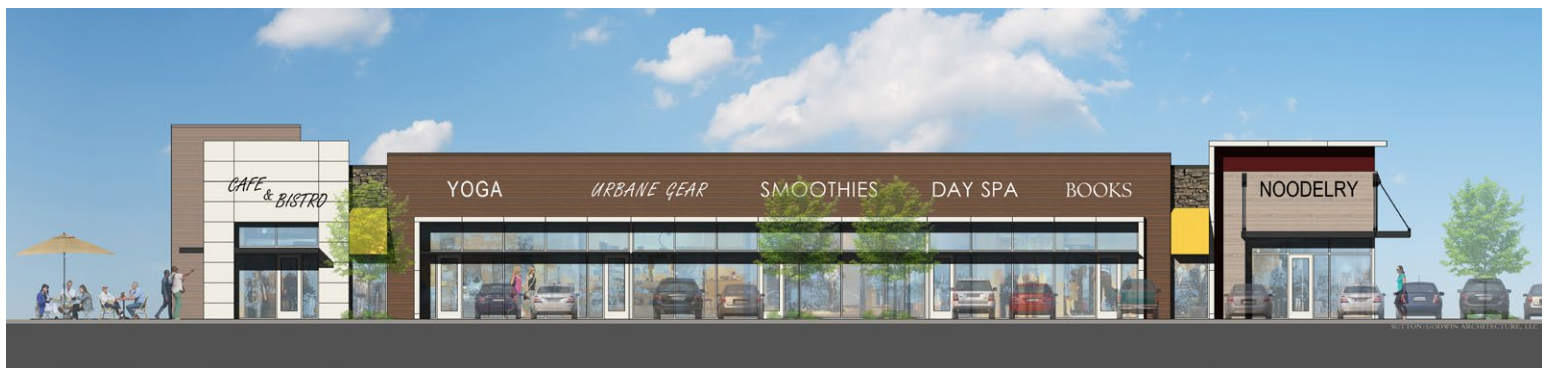
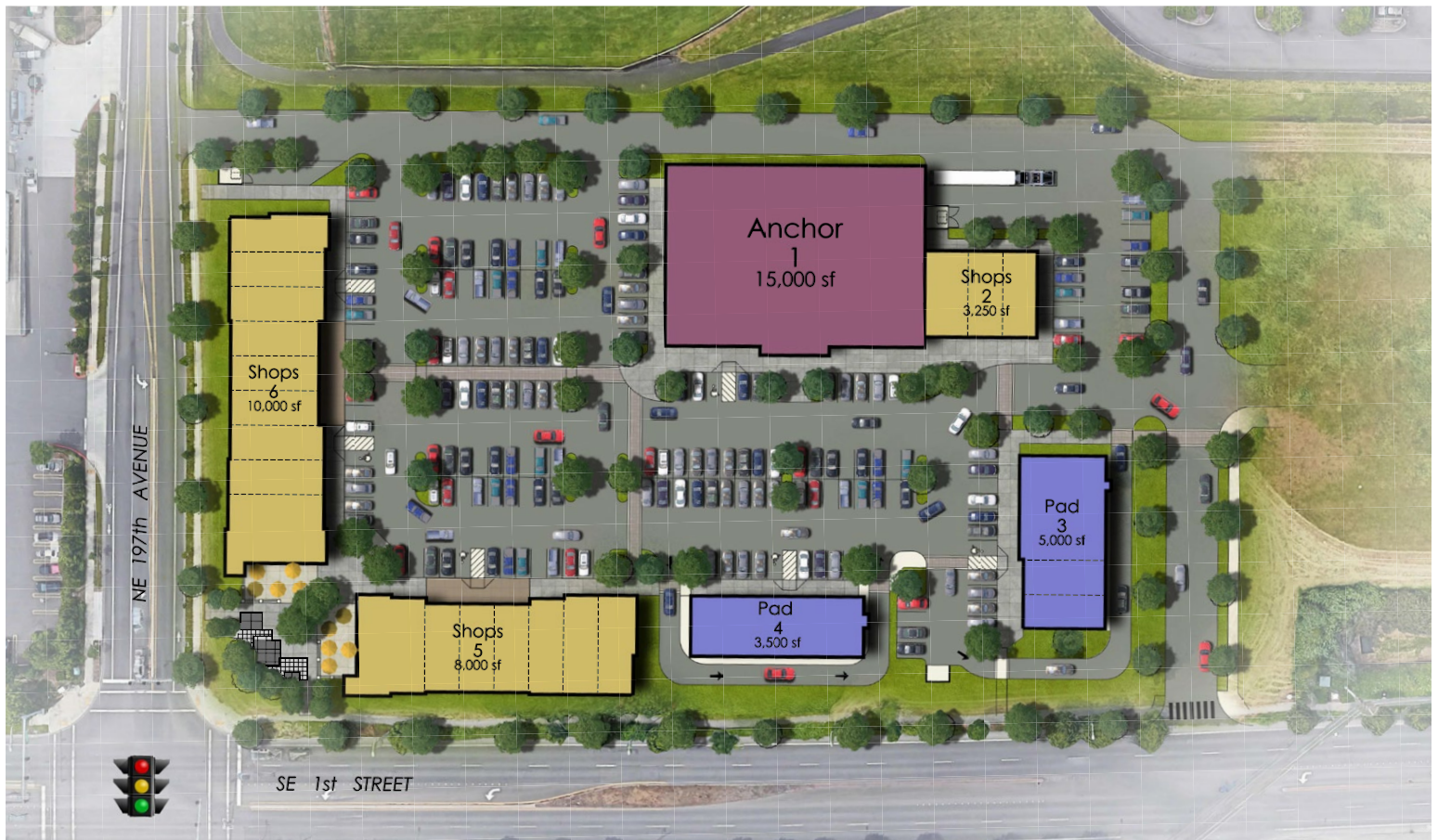
	1 MILE	3 MILE	10 MIN DRIVE TIME
POPULATION	3,065	72,719	139,778
AVG. HH INCOME	\$134,794	\$117,171	\$101,916
EMPLOYEES	1,715	23,115	45,404

Matt Martinez matt@hsm Pacific.com

Michael Heerman michael@hsm Pacific.com



Site Plan & Renderings



Trade Area Aerial

