

90 BUSHWICK AVENUE

W I L L I A M S B U R G

BETWEEN POWERS & GRAND STREET
BROOKLYN, NY 11211

RETAIL

RETAIL

WINICK RETAIL
SPECIALISTS

90 BUSHWICK AVENUE

SIZE

Ground Floor: 1,750 SF
Lower Level: 825 SF

POSSESSION

Immediate

ASKING RENT

Upon Request

FRONTAGE

40' on Bushwick Avenue

HIGHLIGHTS

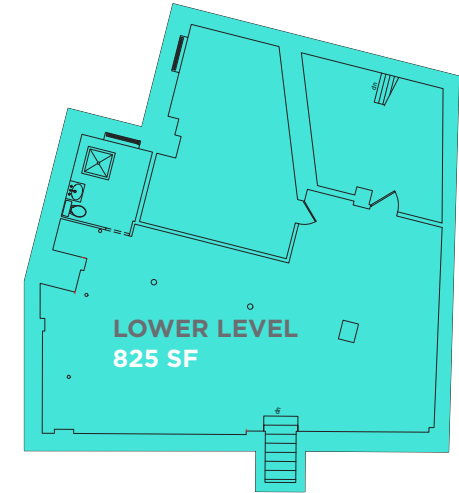
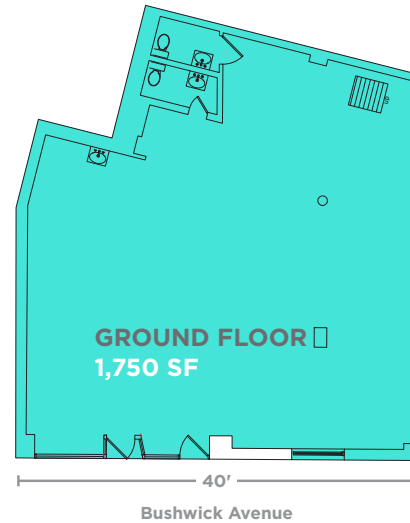
Located in the heart of Williamsburg, steps from the Grand Street **L** train stop

Formally operating as "St. Francis Medical & Dental Clinic"

All uses considered

NEIGHBORS

Chase Bank, Dunkin' Donuts, Subway, Masha & The Bear, 4th Down Sports Bar, T-Mobile, Lula Bean, Bread Brothers Bagel Café, Fly E-Bike Shop, Progress High School



WINICK RETAIL
SPECIALISTS

Winick Realty Group LLC, Licensed Real Estate Brokers
655 Third Avenue, 8th Floor | New York, NY 10017
T 212.792.2600 | F 212.792.2660 | winick.com

ALTHOUGH ALL INFORMATION REGARDING PROPERTY FOR SALE, RENTAL OR FINANCING IS FROM SOURCES DEEMED RELIABLE SUCH INFORMATION HAS NOT BEEN VERIFIED, AND NO EXPRESS REPRESENTATION IS MADE NOR IS ANY TO BE IMPLIED AS TO THE ACCURACY THEREOF, AND IT IS SUBMITTED SUBJECT TO ERRORS, OMISSIONS, CHANGE OF PRICE, RENTAL OR OTHER CONDITIONS, PRIOR SALE, LEASE OR FINANCING, OR WITHDRAWAL WITHOUT NOTICE.

For more information, please contact our exclusive agents:

Josh Siegelman
212.792.2613
jsiegelman@winick.com

Ian Zimmerman
212.792.2647
izimmerman@winick.com