

SHOP. DRINK. DINE.





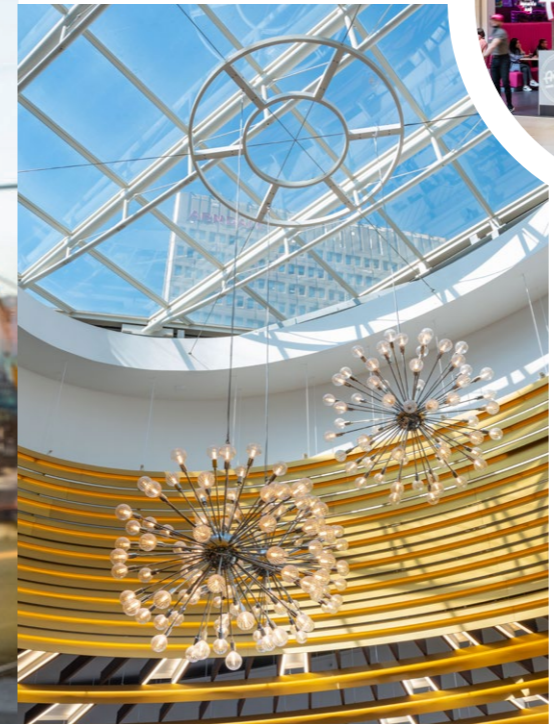
# THE CITY'S CENTRE



**AT THE HEART OF THE MANCHESTER GROWTH STORY IS MANCHESTER ARNDALE, THE CITY'S ICONIC MALL.**

Built in 1979, the landscape around the centre has changed a lot in the last forty years, but Manchester Arndale has always been there and continues to evolve.

With currently over 200 stores, restaurants and cafes and constantly growing, it's every Mancunian's go-to place for shopping, food and drink.

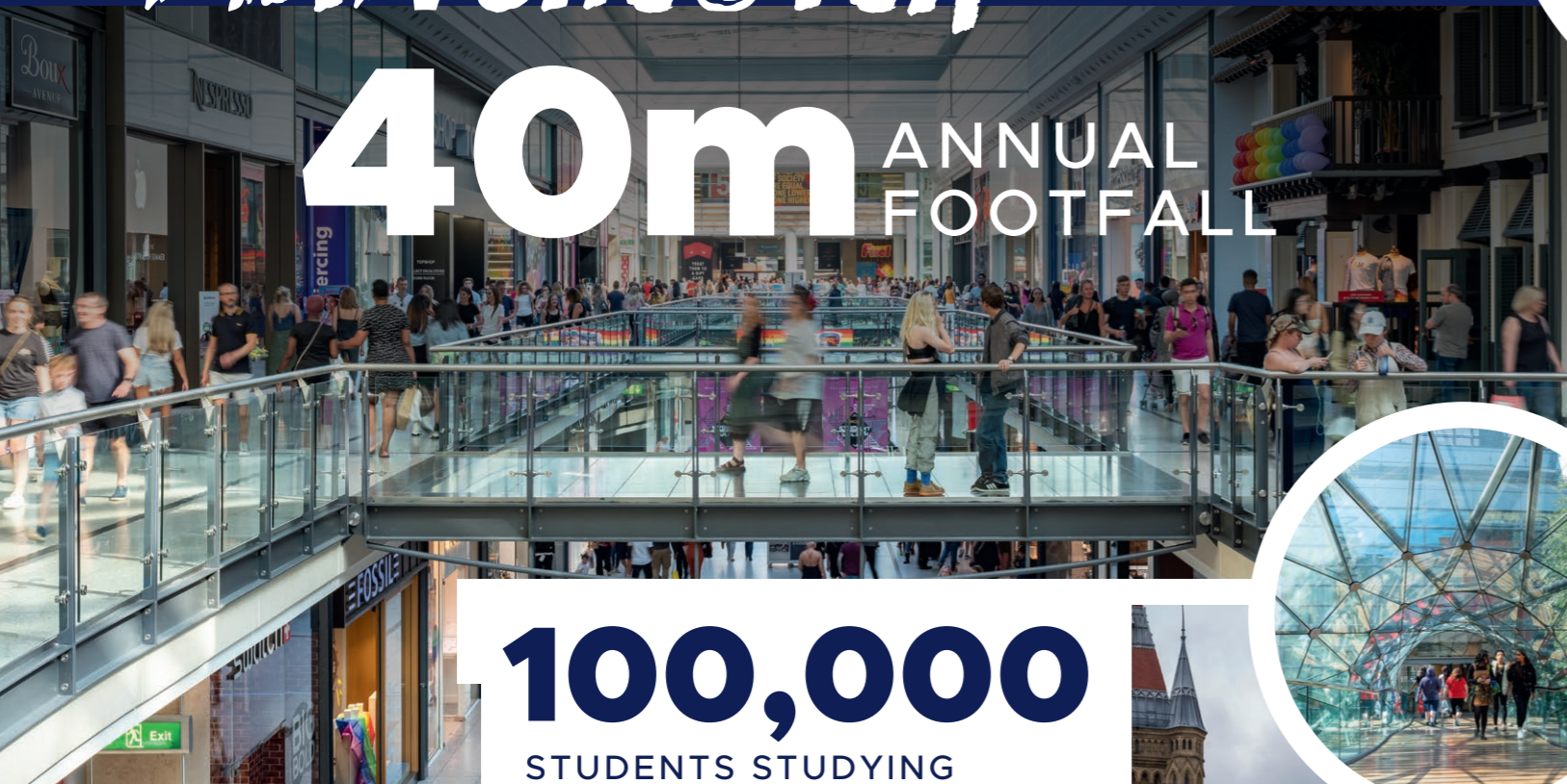


**BECOME A PART OF MANCHESTER ARNDALE, AND JOIN THE MANCHESTER MOVEMENT.**



# MANCHESTER THE 2<sup>ND</sup> CITY

# 40m ANNUAL FOOTFALL



**INTERNATIONAL TOURIST HUB:**  
HIGHEST NUMBER OF CITY BREAKS IN THE UK OTHER THAN LONDON



**£2.4bn**  
*ANNUAL RETAIL SPEND*



# 100,000

**STUDENTS STUDYING IN MANCHESTER**  
(INCLUDING 41,500 INTERNATIONAL STUDENTS)

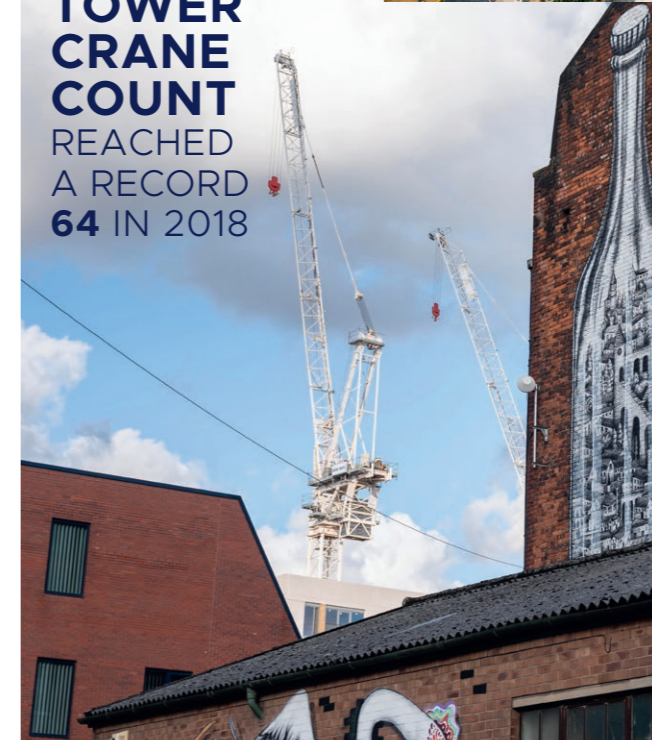
**ELSEWHERE:**  
80,000 BIRMINGHAM  
70,000 LEEDS  
70,000 LIVERPOOL

*1.1M SQ FT OF EDUCATIONAL AND RESEARCH SPACE UNDER CONSTRUCTION*

**CITY POPULATION UP 28%**  
2001-2011 AND PROJECTED TO GROW BY ANOTHER 29% 2011-2025



**TOWER CRANE COUNT REACHED A RECORD 64 IN 2018**



**48 RESIDENTIAL SCHEMES UNDERWAY IN THE CITY CENTRE**  
DELIVERING 15,000 NEW HOMES  
30% UP ON 2018

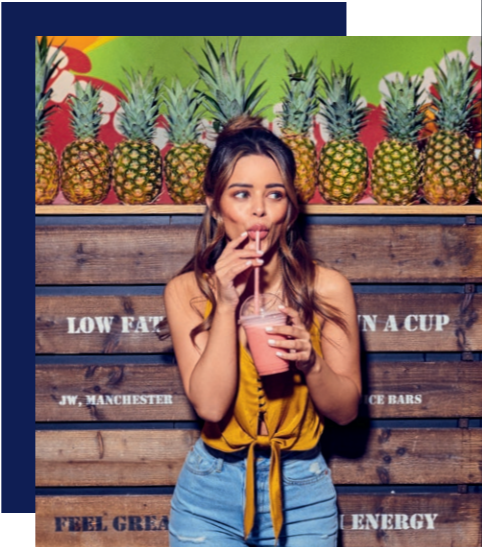


YOU'LL BE IN GOOD COMPANY



**MANCHESTER RANKED 2ND NATIONALLY**

(COMPARED TO THE WEST END) BASED ON SPEND POTENTIAL



**FROM FASHION AND FOOTWEAR, TO LIFESTYLE AND TECHNOLOGY, MANCHESTER ARNDALE HAS SOMETHING FOR EVERYONE.**

Home to the very best of fashion, footwear, convenience and speciality brands, join us in a place where the best retailers want to be.



**51% OF CLOTHING & FOOTWEAR IN THE CITY CENTRE IS UNDER OUR ROOF**



**FIVE GUYS**  
BURGERS and FRIES

**LUSH**  
FRESH HANDMADE COSMETICS

MONKL

RIVER ISLAND



Lindt  
MASTER CHOCOLATIER  
SINCE 1845

MORPHE





**MANCHESTER, ONE OF LONELY PLANET'S BEST CITIES IN THE WORLD TO VISIT**  
2016



**MANCHESTER CHRISTMAS MARKETS RANKED TOP IN THE UK**

UP TO **15% FOOTFALL RISE** ON ARENA EVENT DAYS

# MANCHESTER

UP TO **250** EVENTS AT MANCHESTER ARENA EACH YEAR



OVERSEAS VISITORS INCREASING 10% YEAR ON YEAR - 2018  
**1.3m**  
UP FROM 1.19M IN 2017

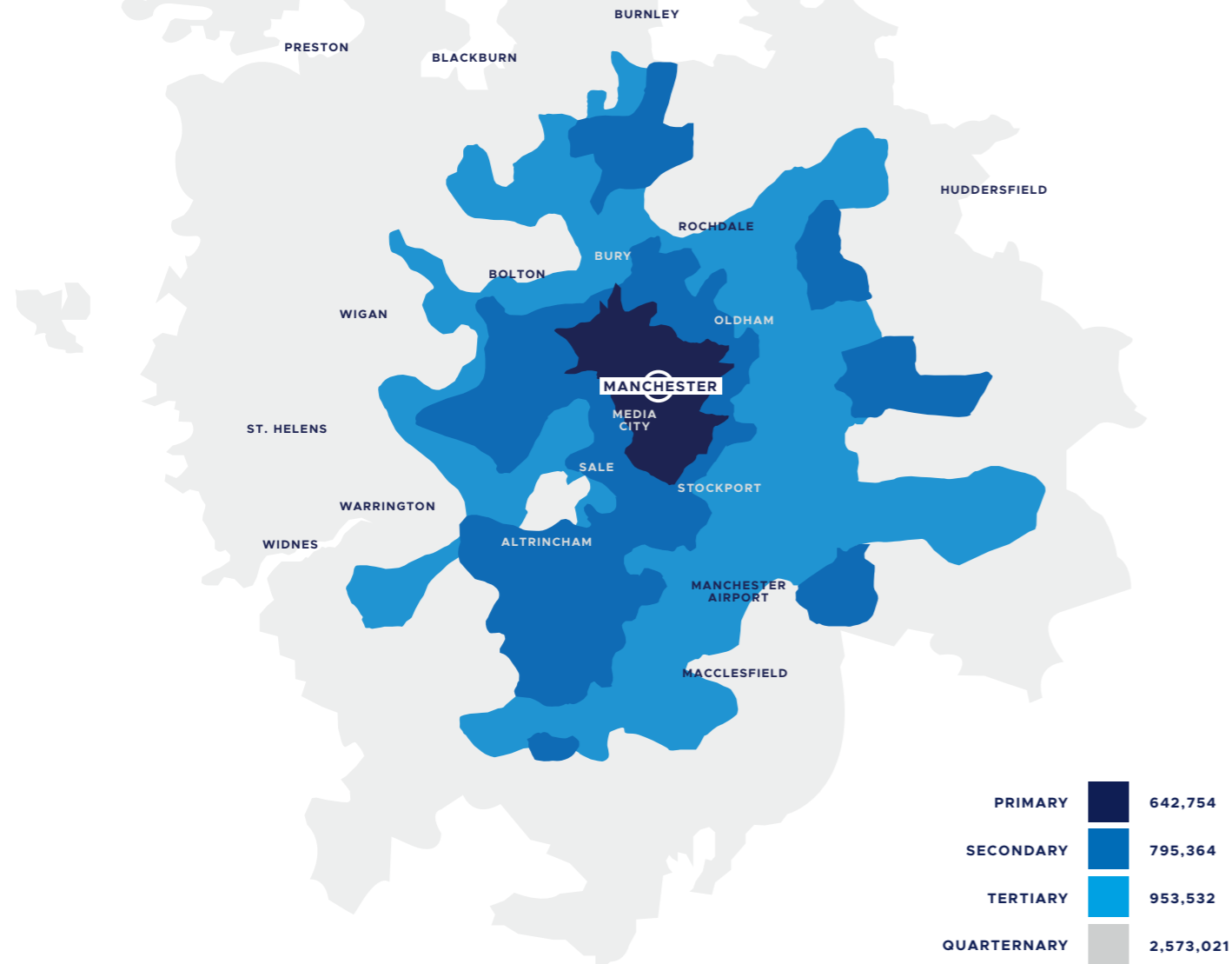


JUST UNDER **£2BN INVESTED** BY OVERSEAS BUYERS IN COMMERCIAL PROPERTY IN THE CONURBATIONS CENTRAL DISTRICTS BETWEEN 2015-2019



# RESIDENT REACH

WITH ANNUAL VISITS TOTALLING AN INCREDIBLE 40 MILLION AND THE AVERAGE PERSON RETURNING 53 TIMES A YEAR, MANCHESTER ARNDALE CONTINUES TO BE THE DESTINATION OF THE NORTH WEST.



**4,964,671**  
TOTAL RESIDENT CATCHMENT

**90,000**  
PEOPLE WORK IN MANCHESTER CITY CENTRE

**63%** PRIMARY CATCHMENT  
**16%** SECONDARY CATCHMENT  
**11%** TERTIARY CATCHMENT  
**9%** QUARTERNARY CATCHMENT

## WALKING DISTANCES

**1 MIN** FROM MANCHESTER ARNDALE TO MARKET STREET TRAM STOP / METROLINK  
**4 MINS** FROM MANCHESTER ARNDALE TO MANCHESTER ARENA  
**10 MINS** FROM MANCHESTER ARNDALE TO SPINNINGFIELDS  
**12 MINS** FROM MANCHESTER ARNDALE TO PICCADILLY STATION  
**25 MINS** FROM MANCHESTER ARNDALE TO THE UNIVERSITY OF MANCHESTER



INTRODUCING

# HALLE PLACE

**Built at the heart of the iconic Manchester Arndale, Halle Place is a all-new dining destination in the centre of the city.**

Every element of the space is designed for a relaxing eating experience, with units to suit cafés and restaurants of all kinds.

From lunchtime coffee to after-dinner drinks, our wide selection of eateries caters for everyone – not just passing shoppers.





WHO HAS JOINED US SO FAR...



Archie's

BARBURRITO  
MEXICAN EATERY

WOLF  
ITALIAN STREET FOOD

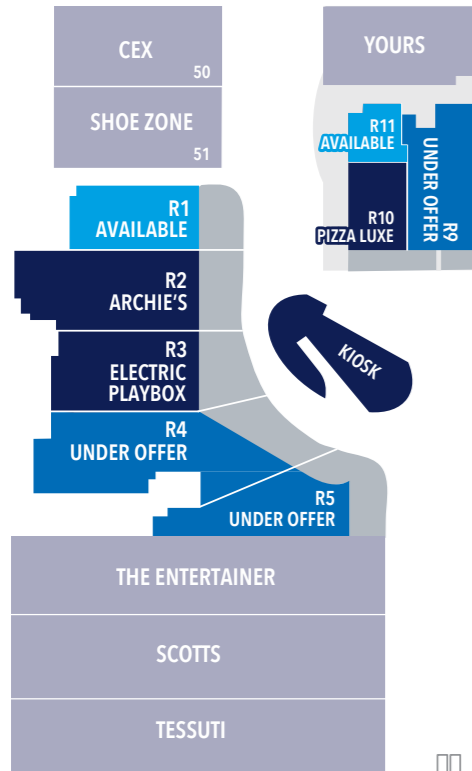
kiosk  
COFFEE BAR

PIZZALUXE  
LEEDS

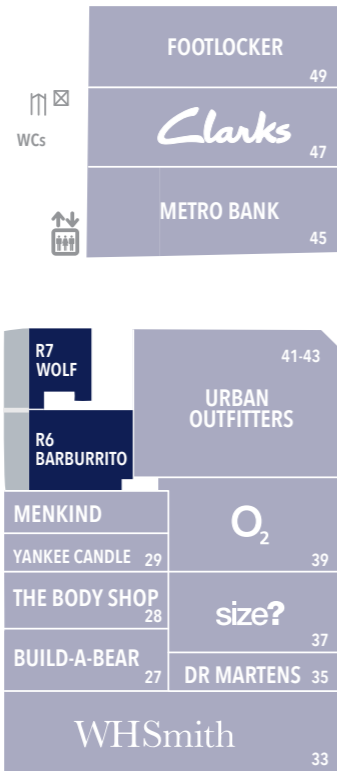




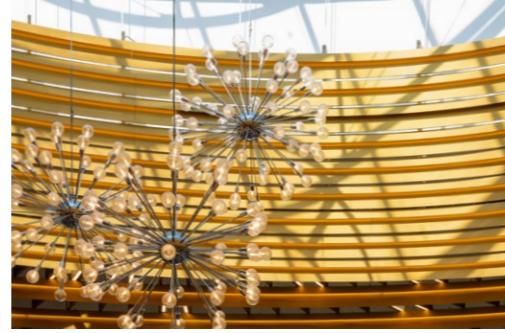
# HALLE PLACE



LET  
 UNDER OFFER  
 AVAILABLE



MARKET STREET



- R1**  
2,110SQ FT  
AVAILABLE

---

- R2**  
ARCHIE'S

---

- R3**  
ELECTRIC PLAYBOX

---

- R4**  
3,670SQ FT  
UNDER OFFER

---

- R5**  
2,734SQ FT  
UNDER OFFER

---

- R6**  
BARBURRITO

---

- R7**  
WOLF ITALIAN STREET FOOD

---

- CENTRAL KIOSK**  
KIOSK COFFEE BAR

---

- R9**  
2,389SQ FT  
UNDER OFFER

---

- R10**  
PIZZALUXE

---

- R11**  
544SQ FT  
AVAILABLE



DAVID O'SHEA  
DOS@TIMERETAILPARTNERS.COM  
T 0207 399 0613  
M 07984 980 123

JACK MACKINNON  
JACK@TIMERETAILPARTNERS.COM  
T 0207 399 0612  
M 07545 598 517

MATT CASSELL  
MATT@TIMERETAILPARTNERS.COM  
T 0207 399 0615  
M 07771 921 793

ON BEHALF OF  
**M&G** intu



STEVE TREGENZA  
STREGENZA@METISREALESTATE.COM  
T 0161 806 0866  
M 07899 988 112

LUKE NICHOLSON  
LNICHOLSON@METISREALESTATE.COM  
T 0161 806 0866  
M 07841 026 097

SUZANNE WAINWRIGHT  
SWAINWRIGHT@METISREALESTATE.COM  
T 0161 806 0866  
M 07920 163 824

MANCHESTER  
ARNDALE

LET'S GET **SOCIAL!**

75K LIKES

18.1K FOLLOWERS

14K FOLLOWERS