

INDUSTRIAL – Lease

7346 Nineteen Mile
Sterling Heights, MI



Total Building Size:
Total Available: 4,457
Age: 1979
Factory: 4,007
Office: 450
Minimum Divisible: 4,457
Zoned: Industrial

Lease Rate: \$10.95/ SF Gross
Monthly Rate: \$4,067.01

Property Details

Acreage:		Power:	200 A / 220 V
Frontage:		Buss:	
Depth:		Lights:	Fluorescent
Parking:	10+	Truckwell:	
Expandable:		Grade Door:	12' x 14'
Storage:		Heating:	Gas Forced Air
Clearance:	16'	A/C:	100%
Bay Size:	40'	Sprinklered:	
Lavatories:	2	Airlines:	Yes
Crane:		Compressor:	Possible
Underhook:		Floordrains:	

Additional Information:

High image multi-tenant building. Lease rate includes all real estate taxes, building insurance and outside maintenance. Epoxy coated floors. New LED lighting. Pristine condition.

Contact Information:

Chris Dowell

248-447-2717

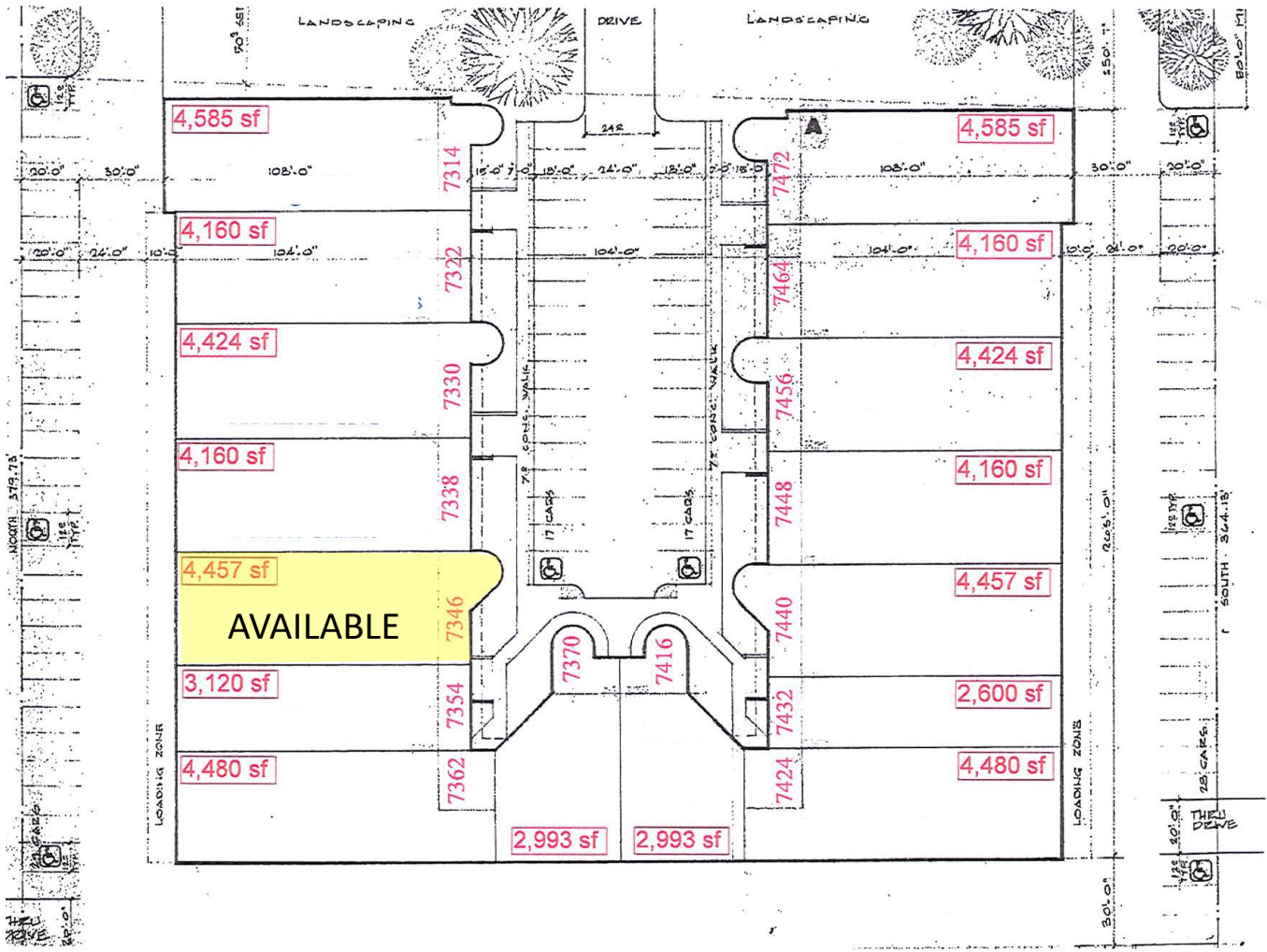
christopher.dowell@nmrk.com

Jack Coury

248-372-2276

jack.coury@nmrk.com

NEWMARK



4,585 sf

4,585 sf

4,160 sf

4,160 sf

4,424 sf

4,424 sf

4,160 sf

4,160 sf

4,457 sf

4,457 sf

AVAILABLE

3,120 sf

2,600 sf

4,480 sf

4,480 sf

2,993 sf

2,993 sf

7314
7322
7330
7338
7346
7354
7362

7472
7464
7456
7448
7440
7432
7424

7370

7416

