

INDUSTRIAL - FLEX

1200 W. 6TH ST., MISHAWAKA, IN

FOR SALE



FEATURES:

- 7,341 SF building available
- Building has an exterior dock and grade level overhead door
- Excellent layout for service oriented businesses
- Located on 6th St. just east of Logan St. in Mishawaka
- Annual taxes: \$3,484.18 (\$0.47 PSF) per year
- **FOR SALE: ~~\$135,000~~ \$120,000**

PRICE REDUCTION



FOR MORE INFORMATION:

Matt Wetzel
Broker
574.261.2284
mwetzel@bradleyco.com

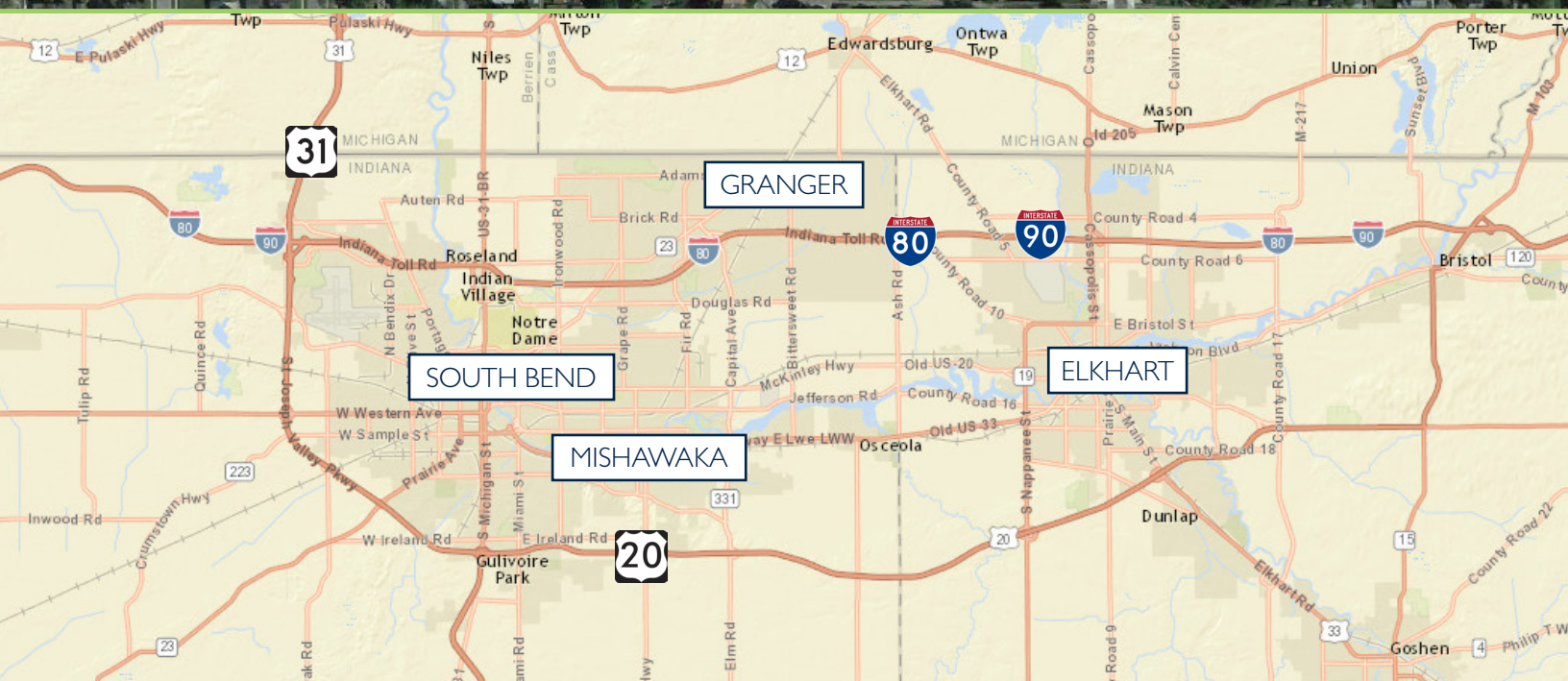
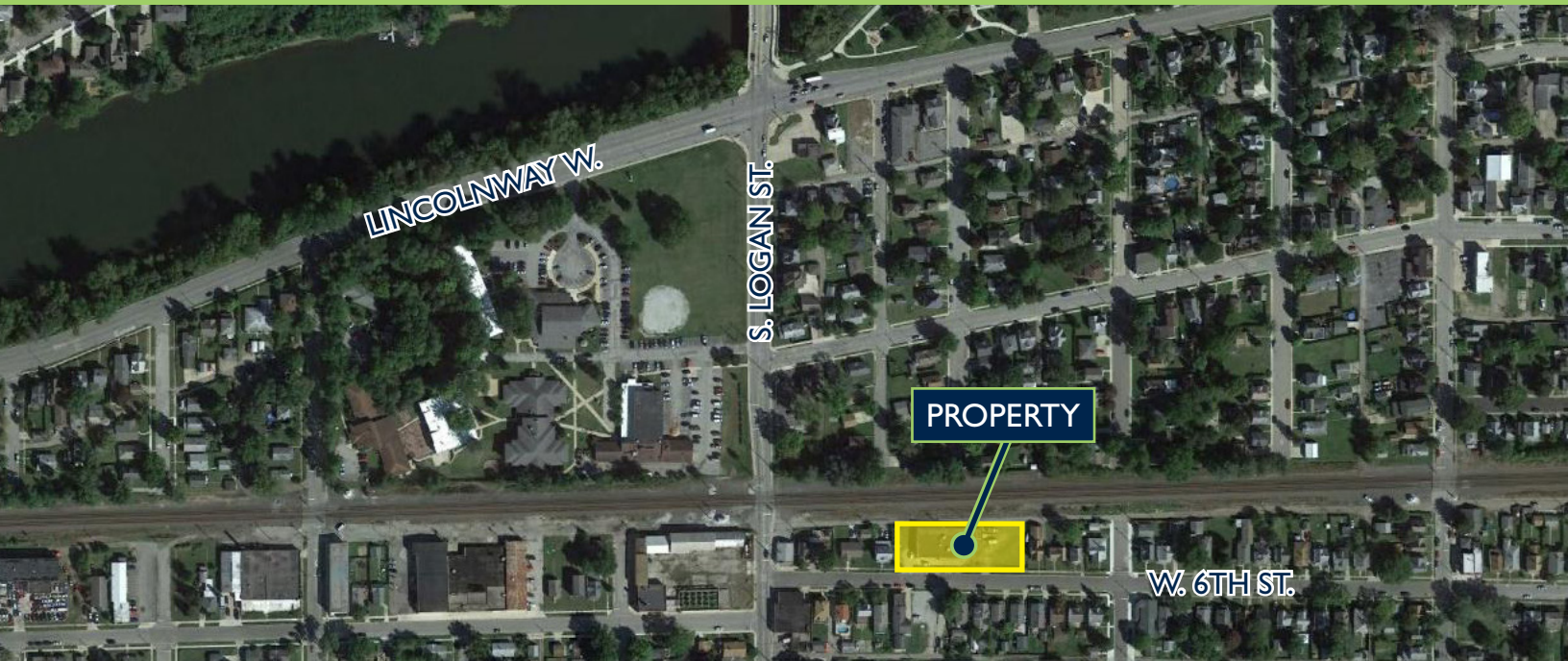
Bradley Company
112 W. Jefferson Blvd., Suite 300
South Bend, IN 46601
bradleyco.com

©2017 Bradley Company, LLC and affiliates. Use of any third party name or mark is for informational purposes only and does not indicate sponsorship or endorsement by such party. Any property information presented above has been obtained from sources believed reliable. Not all information has been independently verified, and Bradley Company, LLC makes no guarantee, warranty or representation about its accuracy. Any projections, opinions, or estimates are for example only and do not necessarily represent the future performance of a property. Before completing a real estate transaction, you and your advisors should conduct an independent investigation of the property to determine its suitability for your needs.



INDUSTRIAL - FLEX

MISHAWAKA, INDIANA



FOR MORE INFORMATION:

Matt Wetzel
Broker
574.261.2284
mwetzel@bradleyco.com

Bradley Company
112 W. Jefferson Blvd., Suite 300
South Bend, IN 46601
bradleyco.com

©2017 Bradley Company, LLC and affiliates. Use of any third party name or mark is for informational purposes only and does not indicate sponsorship or endorsement by such party. Any property information presented above has been obtained from sources believed reliable. Not all information has been independently verified, and Bradley Company, LLC makes no guarantee, warranty or representation about its accuracy. Any projections, opinions, or estimates are for example only and do not necessarily represent the future performance of a property. Before completing a real estate transaction, you and your advisors should conduct an independent investigation of the property to determine its suitability for your needs.

