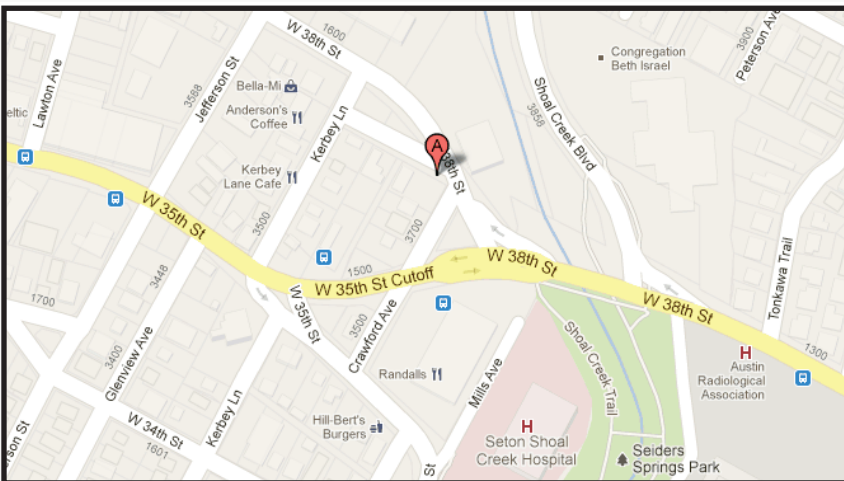
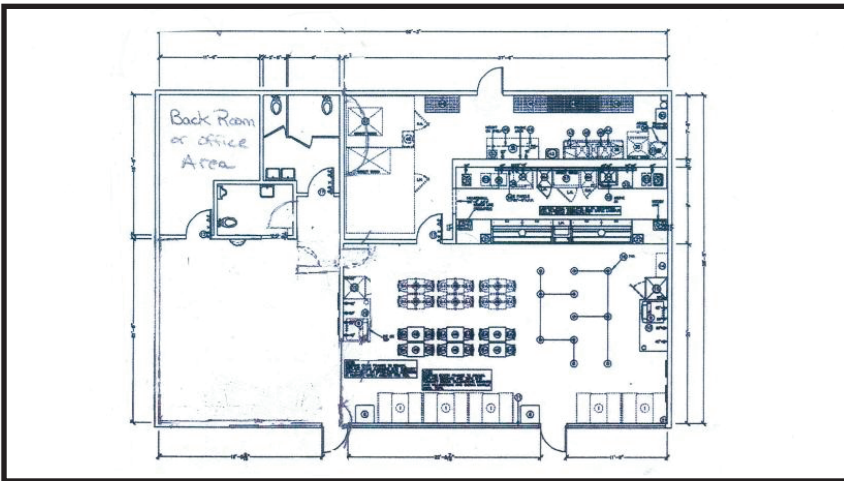


# FOR LEASE



3710 Crawford | Austin, TX 78613



## FEATURES

- Price: \$28 NNN
- Approximately 1000-2440 SF
- Excellent stand alone retail building located near 35th and Kerbey Lane
- Excellent visibility
- Drive thru window available
- Building is perfect for Bank, Restaurant or Soft Retail
- Completely remodeled in 2008 with new plumbing, wiring, and interior finish

## EXCLUSIVE ADVISOR

Chris Gamel, CCIM  
512.689.9894  
cgamel@sbcglobal.net

To learn more, please contact:  
CG Urban Realty Advisors  
3112 Windsor Road, Suite A360  
Austin, Texas 78703  
512.689.9894  
www.CGUrbanRealtyAdvisors.com