

# 600 CONGRESS AVENUE

wework

600 CONGRESS AVE | DOWNTOWN AUSTIN | 78701



**YOUR LIFE'S  
WORK IS CALLING.**



**MATT FRIZZELL**  
matt.frizzell@cushwake.com  
+1 512 814 3404

**KEVIN GRANGER**  
kevin.granger@cushwake.com  
+1 512 814 3403

**MATT WILHITE**  
matt.wilhite@wework.com  
+1 512 774 7782

 **CUSHMAN &  
WAKEFIELD**

# OVERVIEW

## RECENTLY RENOVATED TOWER WITH HIGH-END AMENITIES IN DOWNTOWN AUSTIN

Located in the center of downtown Austin, 600 Congress is a 32-story Class A, LEED Gold Certified property. This 30-story tower was recently renovated in 2017 and features beautiful outdoor spaces, 16 elevators, and onsite parking. There's also a 3,700 square foot state-of-the-art fitness facility and an onsite Starbucks.

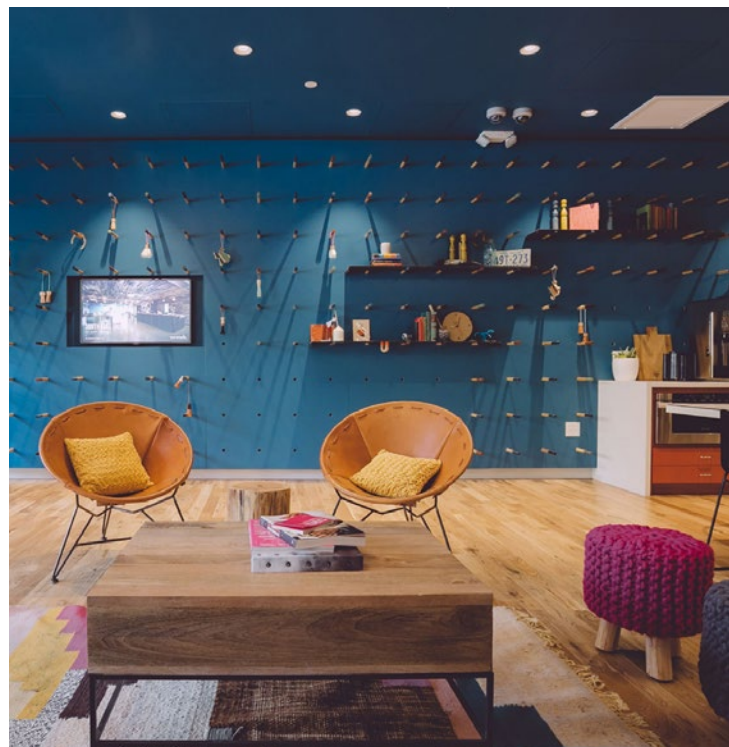
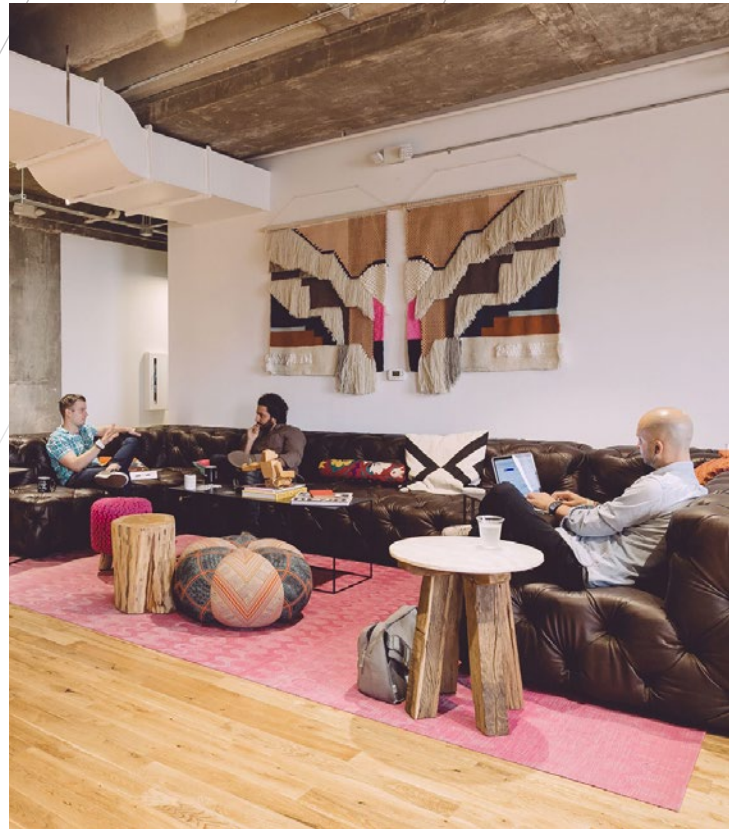
**82,536** TOTAL WEWORK RSF

**4** WEWORK FLOORS

**1.6:1,000** PARKING RATIO

## AVAILABILITIES

<b>SUITE 100</b>	2,156 SF (avail. 6.1.21)
<b>SUITE 1475</b>	3,500 SF
<b>SUITE 1525</b>	14,000 SF
<b>SUITE 1600</b>	7,000 SF



# BUILDING OVERVIEW

<b>FLOOR 1</b>	<b>2,156 SF</b>
<b>FLOOR 14</b>	<b>30,228 SF</b>
<b>FLOOR 15</b>	<b>27,072 SF</b>
<b>FLOOR 16</b>	<b>23,080 SF</b>

**DESIGNED FOR  
EFFICIENCY,  
COLLABORATION,  
AND PRODUCTIVITY**

In addition to WeWork's full suite of amenities and perks—from super-fast WiFi to 24/7 security—600 Congress Ave members also have access to the building's unique amenities like a new mother's room, meditation room, outdoor space, wellness room, showers, game lounge, classroom, and bike storage. Looking for something in particular? Our onsite staff will be sure to point members in the right direction.

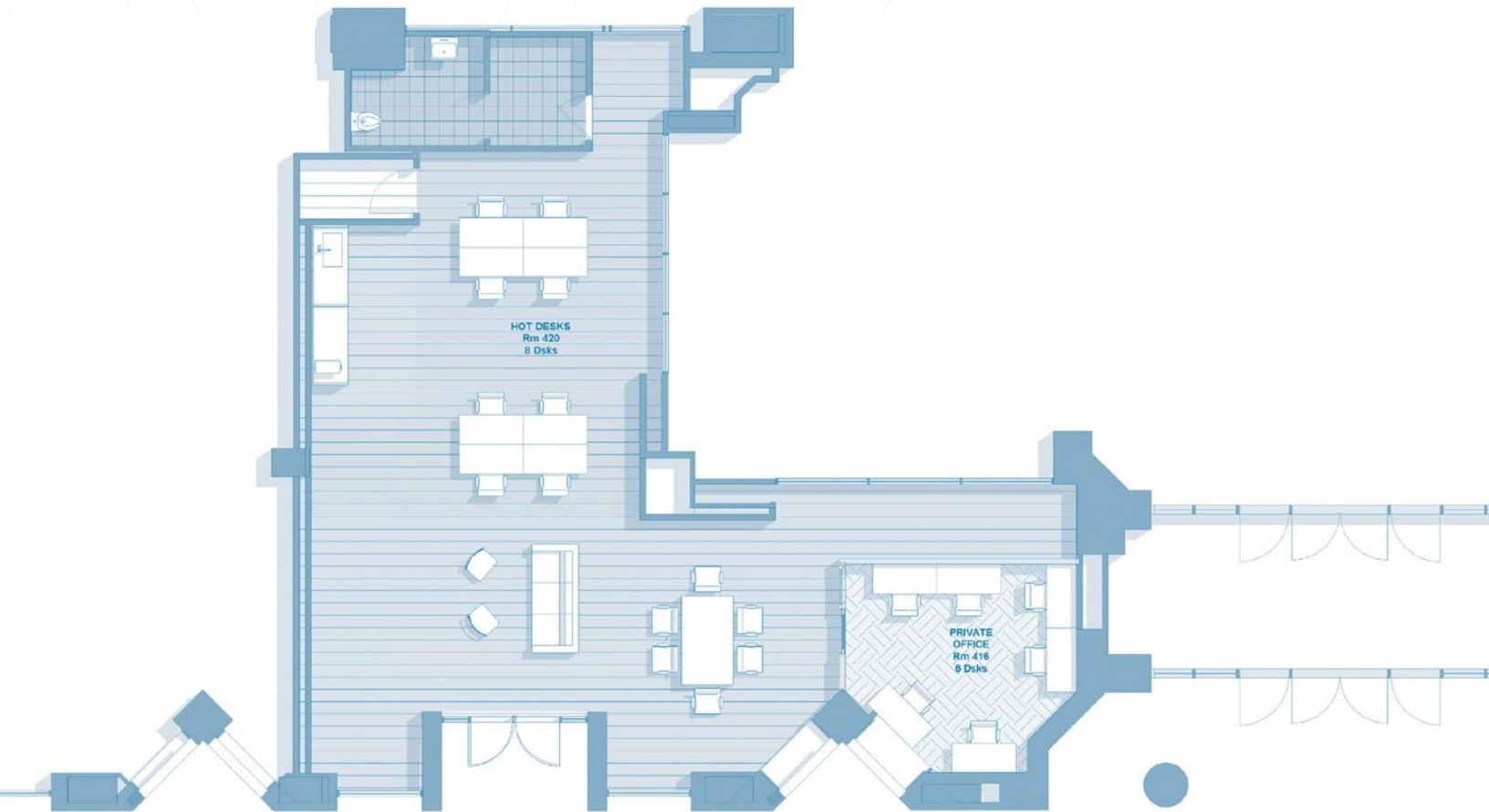
**CREATE  
YOUR  
LIFE'S  
WORK.**

# 1<sup>ST</sup> FLOOR

wework

AVAILABLE ON JUNE 1, 2021

## SUITE 100 - 2,156 SF



# 14<sup>TH</sup> FLOOR

wework

LARGE AVAILABILITIES

**SUITE 1475 - 3,500 SF**

TOTAL FLOOR  
**30,228 RSF**



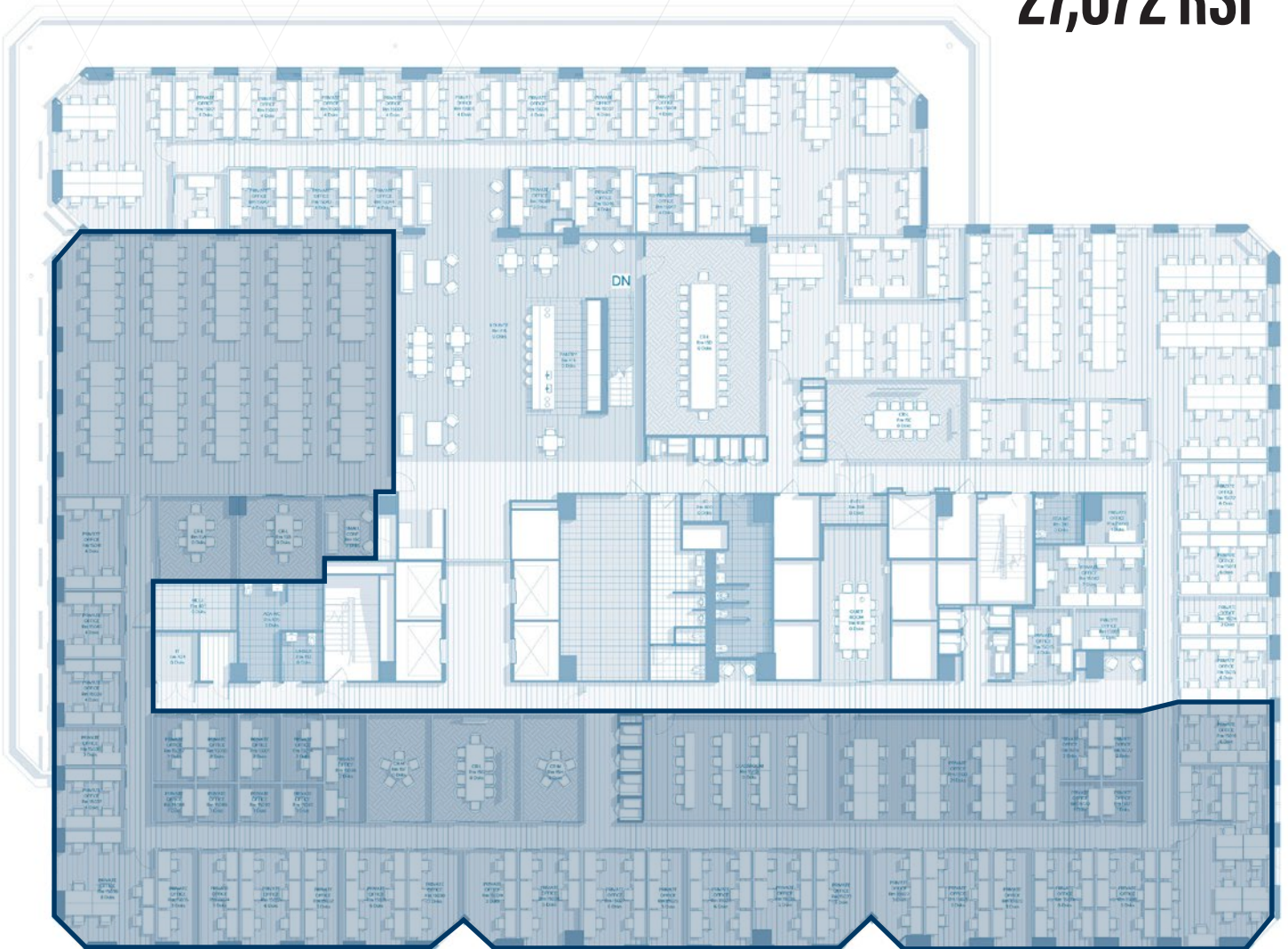
# 15<sup>TH</sup> FLOOR

wework

LARGE AVAILABILITIES

**SUITE 1525 - 14,000 SF**

TOTAL FLOOR  
**27,072 RSF**



# 16<sup>TH</sup> FLOOR

wework

LARGE AVAILABILITIES

**SUITE 1600 - 7,000 SF**

TOTAL FLOOR  
**23,080 RSF**



# THE CITY AT YOUR DOORSTEP.

wework



600 Congress Ave is just blocks from the Texas State Capitol and only a ten-minute walk from the biking and hiking trails around Austin's Town Lake. World-famous 6th Street, lined with music venues, is right around the corner. When it's time to unwind or celebrate a win, members can grab a bite at Cuba 512, stroll the grounds of the Capitol, or sip a swanky cocktail at the Roosevelt Room. Plus, the building is conveniently located between the main North-South Capital Metro Bus routes through Downtown Austin, including the popular MetroRapid route, making commuting a breeze.

## EAT & DRINK

1. Perry's Steakhouse
2. Roaring Fox
3. The Driskill Bar
4. Garage
5. P. Terry's Burger Stand
6. 7 Eleven
7. Comedor
8. Chipotle
9. Chinatown
10. 1Eureka
11. Slake Cafe
12. Shiner's Saloon
13. Voodoo Doughnut
14. Caffe Medici

## LIFESTYLE & ENTERTAINMENT

15. Shop 24
16. Fitness Center
17. Gold's Gym
18. Chase Bank
19. United States Postal Service
20. Chase Bank
21. The Paramount Theatre
22. CVS

## TRANSPORTATION

### *Commuter Rail, Capital MetroRail*

4th Street Downtown CapMetro Rail	0.9 mi
Austin History Center Bus Station	5 mins



**wework**<sup>®</sup>

**AT 600 CONGRESS**

600 Congress Avenue  
Austin, TX 78701



**MATT FRIZZELL**

[matt.frizzell@cushwake.com](mailto:matt.frizzell@cushwake.com)

+1 512 814 3404

**KEVIN GRANGER**

[kevin.granger@cushwake.com](mailto:kevin.granger@cushwake.com)

+1 512 814 3403

**MATT WILHITE**

[matt.wilhite@wework.com](mailto:matt.wilhite@wework.com)

+1 512 774 7782



**CUSHMAN &  
WAKEFIELD**