



TRANSWESTERN

REAL ESTATE
SERVICES

A large white sign with a black border and a black base. The sign features the company name 'REDPATH AND COMPANY' in green and black text, and the address '4810' in white text on a black background.

REDPATH
AND COMPANY

4810

CLASS A OFFICE SPACE

REDPATH BUILDING SUBLEASE

4810 WHITE BEAR PARKWAY, WHITE BEAR LAKE, MN 55110

REDPATH BUILDING SUBLEASE

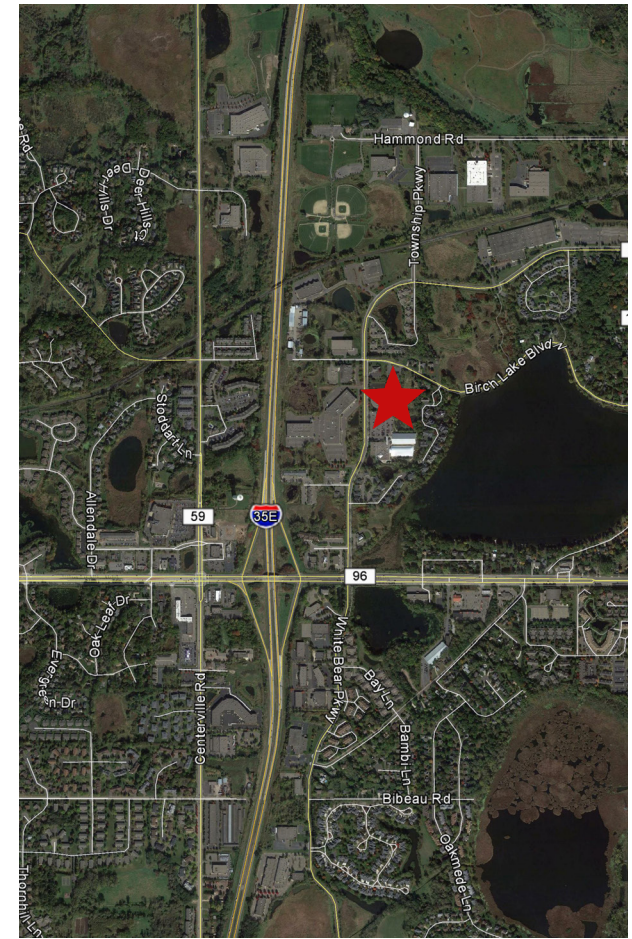
4810 WHITE BEAR PARKWAY, WHITE BEAR LAKE, MN 55110

Building Information

This prime White Bear Lake location offers convenient access to the Northeast suburban marketplace. Numerous amenities surround the property including Lifetime Fitness on the adjacent lot, restaurants, grocery, coffee shops and other retail. The Redpath Building is located 2 blocks off of Interstate 35E and Highway 96, both major thoroughfares in the Northeast metro.

Sublease Features

- 13,754 SF available
- Rate: \$23.00 - \$24.00 Gross
- Term through 1/31/31 (Shorter terms will be considered)
- Furniture available
- Exterior building signage



Mike Salmen 612.359.1660 | mike.salmen@transwestern.com
Frank Richie 612.359.1674 | frank.richie@transwestern.com

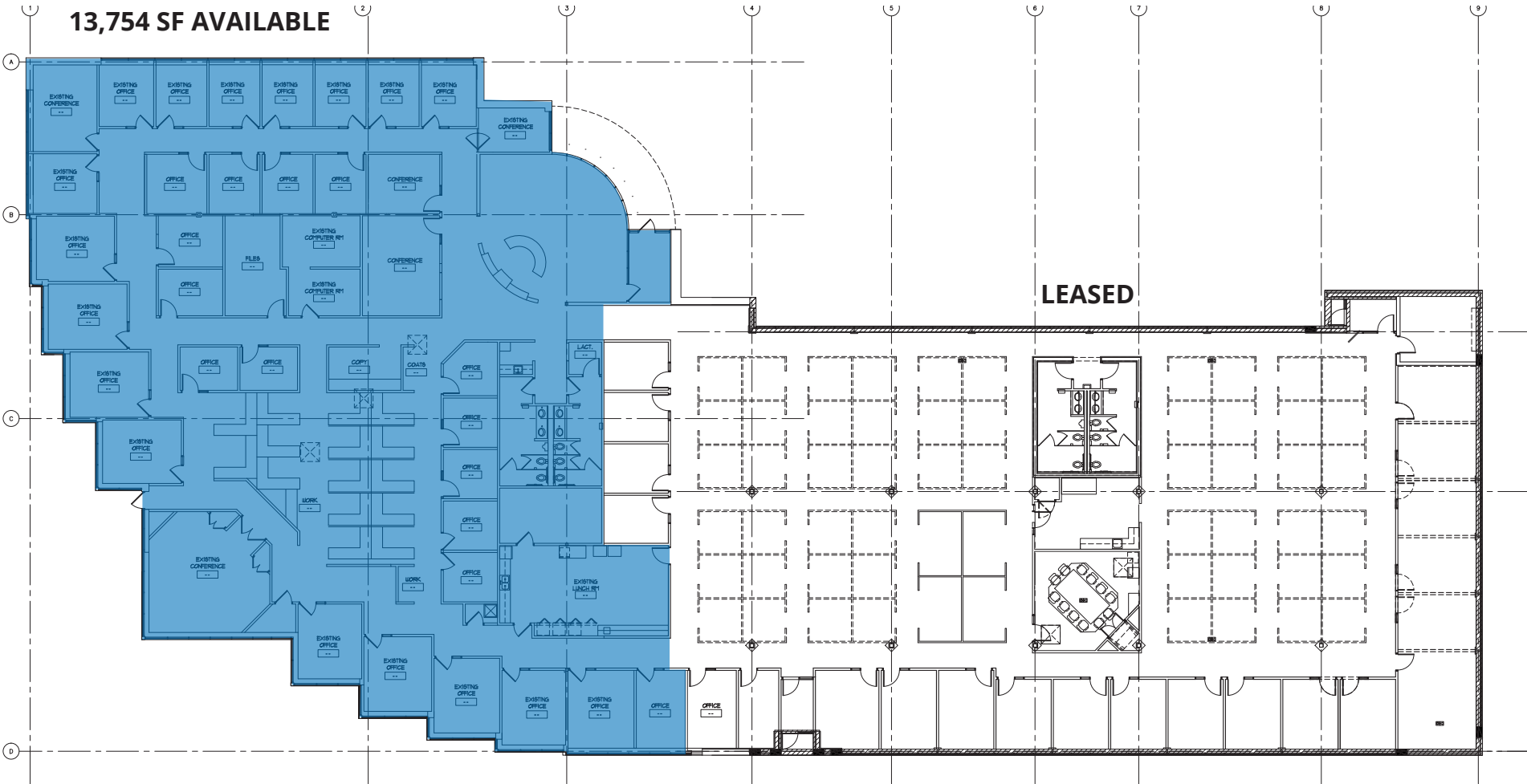
The information provided herein was obtained from sources believed reliable; however, Transwestern makes no guarantees, warranties or representations as to the completeness or accuracy thereof. The presentation of this property is submitted subject to errors, omissions, change of price or conditions, prior sale or lease, or withdrawal without notice. Copyright © 2021 Transwestern.

REDPATH BUILDING SUBLEASE

4810 WHITE BEAR PARKWAY, WHITE BEAR LAKE, MN 55110



REAL ESTATE SERVICES



Mike Salmen 612.359.1660 | mike.salmen@transwestern.com
Frank Richie 612.359.1674 | frank.richie@transwestern.com

The information provided herein was obtained from sources believed reliable; however, Transwestern makes no guarantees, warranties or representations as to the completeness or accuracy thereof. The presentation of this property is submitted subject to errors, omissions, change of price or conditions, prior sale or lease, or withdrawal without notice. Copyright © 2021 Transwestern.