

HEART
OF YOUR
BUSINESS



WATERLOO HOUSE

CITY CENTRE SUITES
available from 1,056 sq ft - 2,578 sq ft

VICTORIA SQUARE | WATERLOO STREET | BIRMINGHAM | B2 5TB

THE PERFECT PLACE

In the centre of Birmingham's renowned Colmore Business District, home to international occupiers HSBC, Lloyds, Eversheds Sutherland, KPMG, and PwC, Waterloo House is the perfect place to house your business.

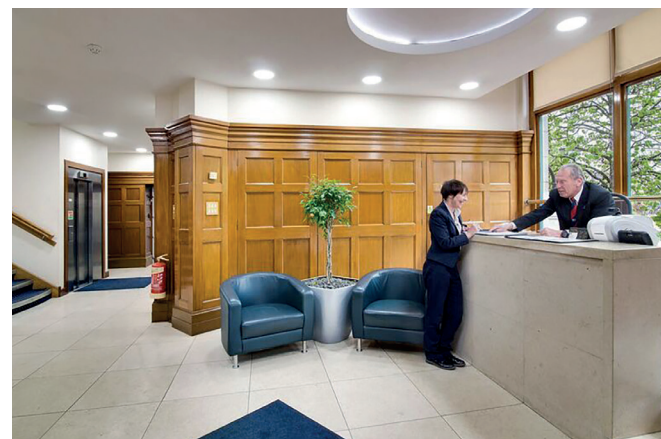
The building already boasts businesses including Venn Group, Richborough Estates, Peter Brett Associates, Colmore BID and the Football League Trust and offers flexible, up to date space in a period building overlooking Victoria Square.

Extending over seven floors and with suites on offer from 1,056 sq ft to 2,578 sq ft, Waterloo House has everything for your business to thrive.

The building's main features include:

- Ⓞ Manned reception
- Ⓞ 8 person passenger lift
- Ⓞ Individually controlled comfort cooling and heating system
- Ⓞ Suspending ceilings with inset LED lighting
- Ⓞ Floor box and dado trunking for power and data
- Ⓞ Kitchens and WCs on each floor
- Ⓞ Intruder security alarm
- Ⓞ 24/7 building access
- Ⓞ EPC - D

HIGH QUALITY SUITES



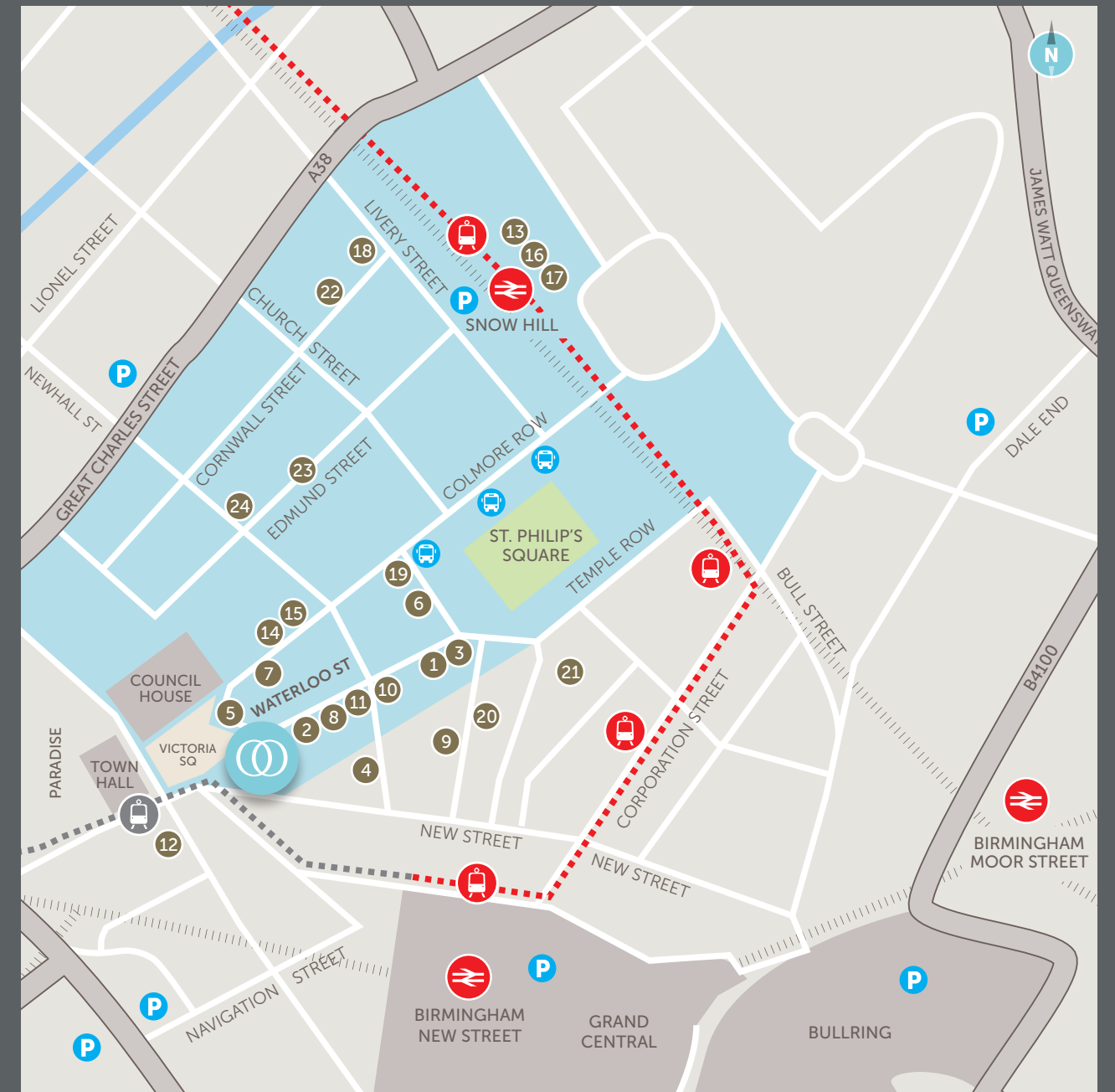
CONVENIENTLY LOCATED

Waterloo House sits alongside the city's principle retail and leisure areas with Bullring, Mailbox, Brindleyplace and Grand Central all on the building's doorstep, making it easy to pop out for lunch, organise business meetings, or to socialise after work.

Close to two Metro stops and the new Westside tram extension that opens in 2019, getting to work couldn't be easier, with New Street station, local bus stops and Moor Street and Snow Hill stations equally just a few minutes' walk away.



IN THE CENTRE OF BIRMINGHAM'S RENOWNED COLMORE BUSINESS DISTRICT



SAT NAV: B2 5TB



RESTAURANTS

1. Bar & Block
2. Adams
3. Fumo
4. Amantia
5. Nosh & Quaff
6. Damascena Coffee House

BARS

7. The Bureau
8. Pure Craft Bar & Kitchen
9. The Botanist
10. Cosy Club
11. Lost & Found
12. Chameleon

KEY OCCUPIERS

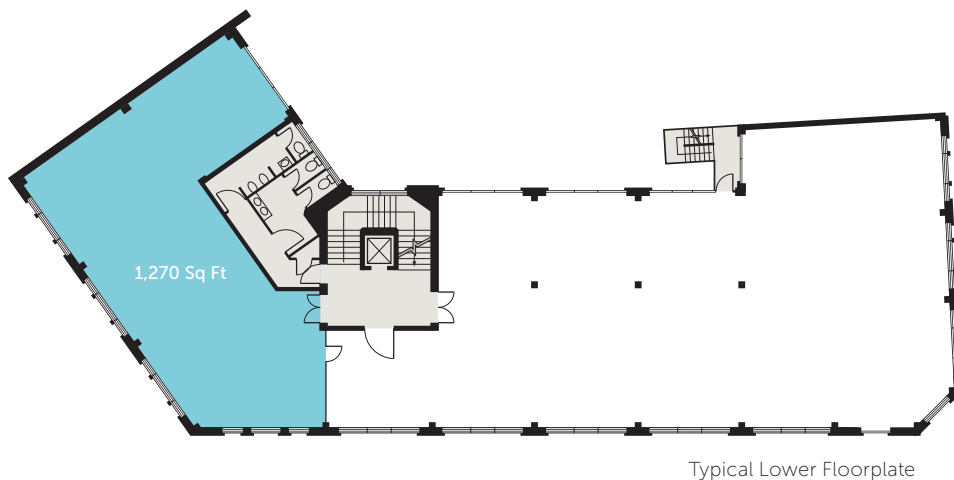
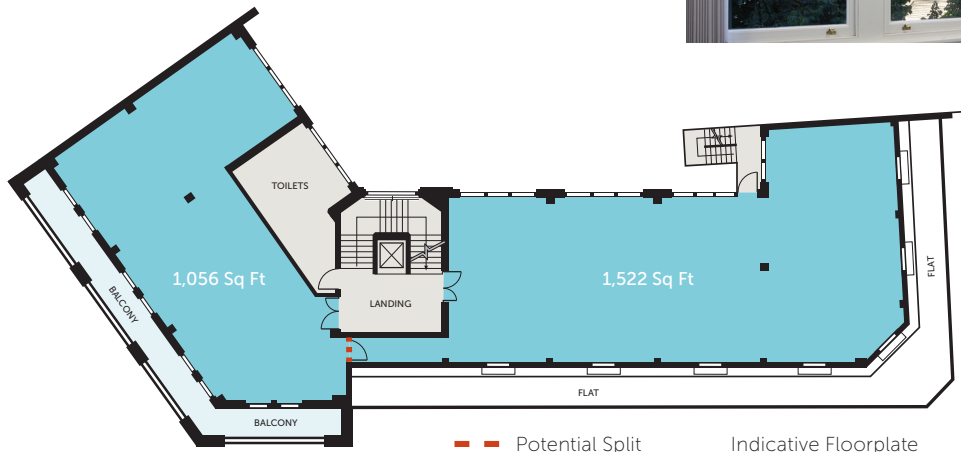
13. HS2
14. Lloyds
15. Eversheds Sutherland
16. Barclays
17. KPMG
18. Santander
19. Mills & Reeve
20. Irwin Mitchell
21. AXA
22. Pinsent Masons
23. Gateley
24. Mott MacDonald

Colmore Business District

FLEXIBLE SPACE

Waterloo House offers up to date office space in an historical setting overlooking Birmingham's historic Victoria Square, Council House and Town Hall.

An address that gives you accessibility and flexibility alongside the space to grow your business.



Andrew Berry
Andrew.J.Berry@cushwake.com
0121 697 7247



Malcolm Jones
mjones@kwboffice.com
0121 212 5992

MISREPRESENTATION ACT:

KWB & Cushman & Wakefield for themselves and for the vendors or lessors of this property, whose agents give notice that: a) all particulars are set out as general outline only for the guidance of intending purchasers or lessees, and do not comprise part of an offer or contract: b) all descriptions, dimensions, references to condition and necessary permissions for use and occupation, and other details are given in good faith and are believed to be correct but any intending purchasers or tenants should not rely on them as statements or representations of fact but must satisfy themselves by inspection or otherwise as to the correctness of each of them. c) no person in the employment of KWB & Cushman & Wakefield has any authority to make any representation of warranty whatsoever in relation to this property.

Designed and produced by Core | www.core-marketing.co.uk | 0121 232 5000. November 2017.