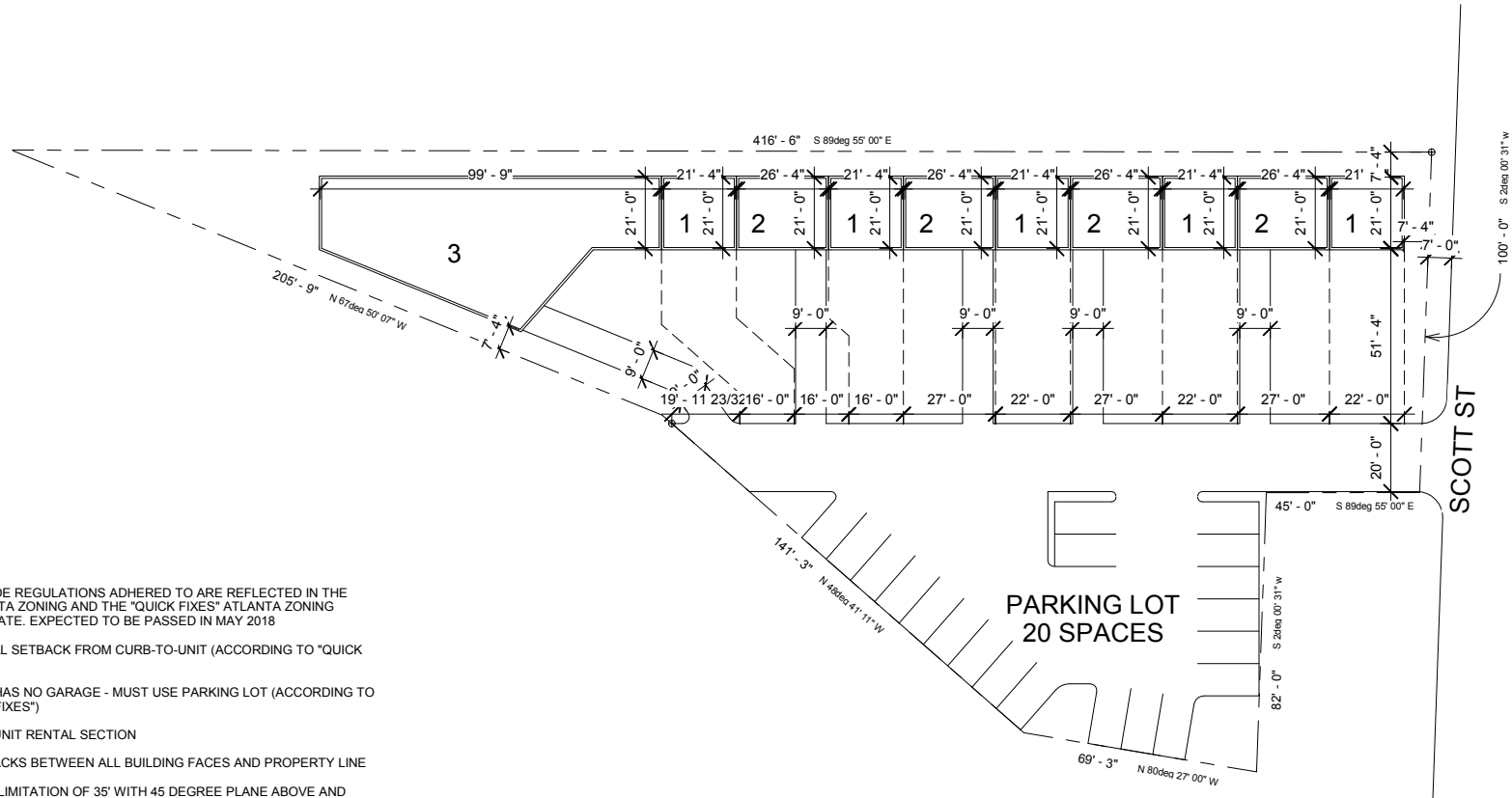


IN TOWN MANAGEMENT GROUP, LLC.



NOTES:

ZONING AND CODE REGULATIONS ADHERED TO ARE REFLECTED IN THE CURRENT ATLANTA ZONING AND THE "QUICK FIXES" ATLANTA ZONING ORDINANCE UPDATE. EXPECTED TO BE PASSED IN MAY 2018

- 51' TOTAL SETBACK FROM CURB-TO-UNIT (ACCORDING TO "QUICK FIXES")
- TYPE 1 HAS NO GARAGE - MUST USE PARKING LOT (ACCORDING TO "QUICK FIXES")
- LARGE UNIT RENTAL SECTION
- 7' SETBACKS BETWEEN ALL BUILDING FACES AND PROPERTY LINE
- HEIGHT LIMITATION OF 35' WITH 45 DEGREE PLANE ABOVE AND TOWARDS BACK OF PROPERTY
- THE ESTIMATED SQUARE FOOTAGES REFLECT THAT OF THREE STORY UNITS
- LOT LINES ARE CONFIGURED AS TO ALLOW EACH UNIT A MINIMUM OF 16' WIDE LOT AT THE PUBLIC RIGHT-OF-WAY (ACCORDING TO "QUICK FIXES")

① GROUND LEVEL - GENERIC
1/32" = 1'-0"

1 = UNIT TYPE 1 - 1,350 SF
2 = UNIT TYPE 2 - 1,650 SF
3 = LARGE UNIT - 8,910 SF

MASTER PLAN

23 SCOTT STREET