

## Office suite for lease

East Park At Pelham  
3523 Pelham Road, Suite A  
Greenville, SC 29615



## Office space with easy access to I-85

### Property Description

First floor office space available in brick building located in an established office park. The space provides one private office and a large space for additional employees. There are also the following communal areas: reception area, waiting area, conference room and kitchen. The office was previously occupied by a financial services company. Additionally, there is ample on-site parking within the office park.

Space includes furniture and all utilities except internet/data.

Spaces	Lease Rate	Space Size
Suite A	\$1,700 per month	1,040 SF

### Get more information

#### [Ned Reynolds](#)

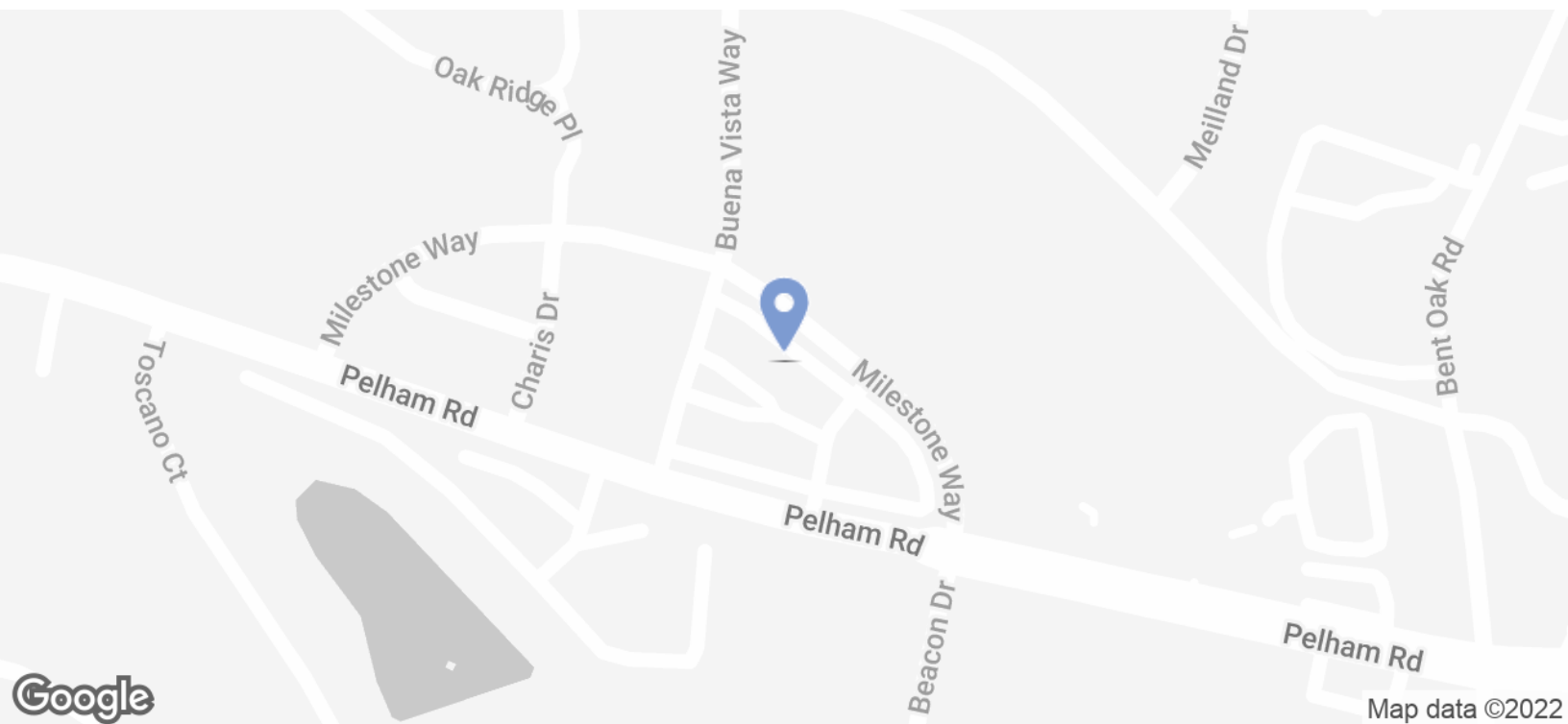
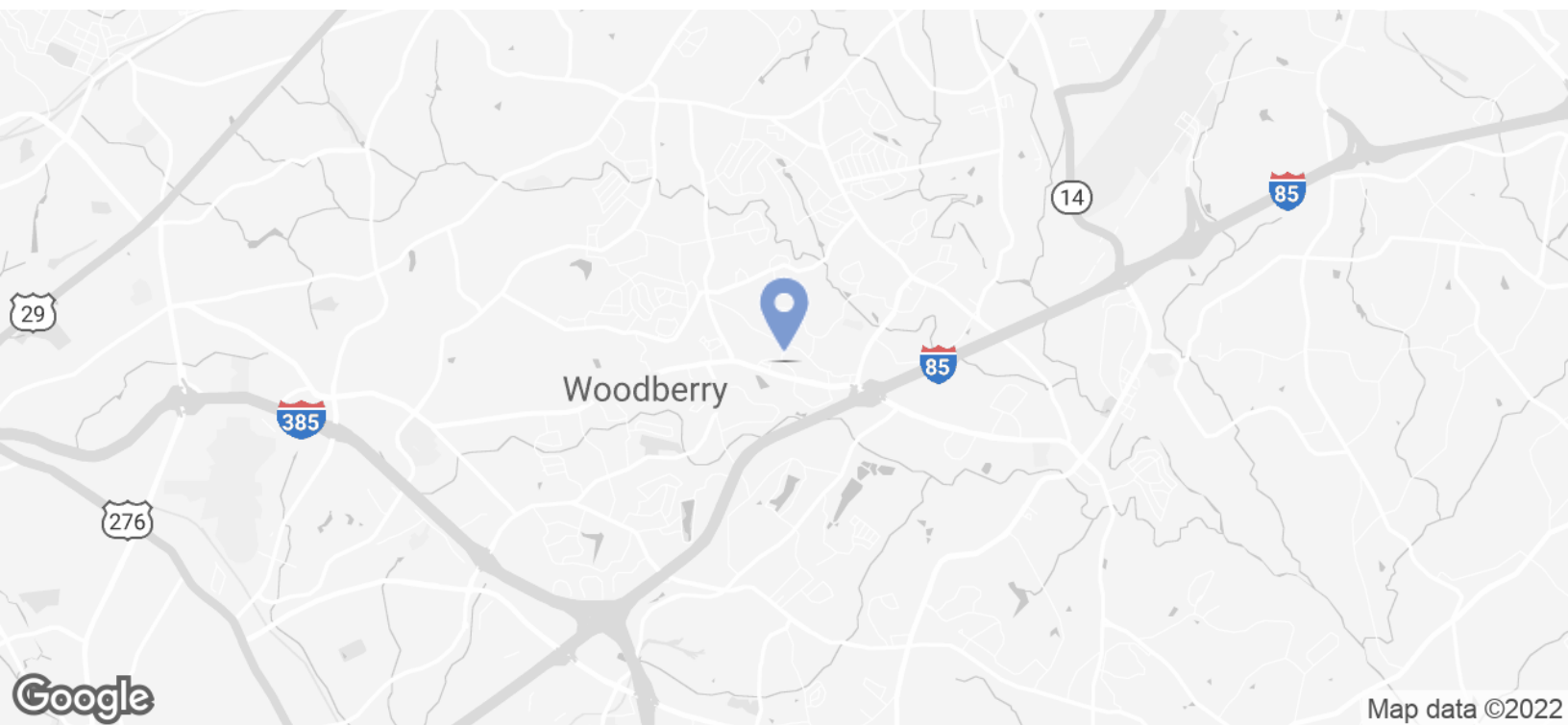
Vice President - Office Team  
C 336 260 3148  
[ned.reynolds@avisonyoung.com](mailto:ned.reynolds@avisonyoung.com)

#### [Chris Prince, MBA, LEED® Green Associate™](#)

Vice President - Office Team  
C 864 430 4957  
[chris.prince@avisonyoung.com](mailto:chris.prince@avisonyoung.com)

## Location map

3523 Pelham Road, Suite A



**AVISON  
YOUNG**

[Ned Reynolds](#)

Vice President - Office Team

C 336 260 3148

[ned.reynolds@avisonyoung.com](mailto:ned.reynolds@avisonyoung.com)

[Chris Prince, MBA, LEED® Green Associate™](#)

Vice President - Office Team

C 864 430 4957

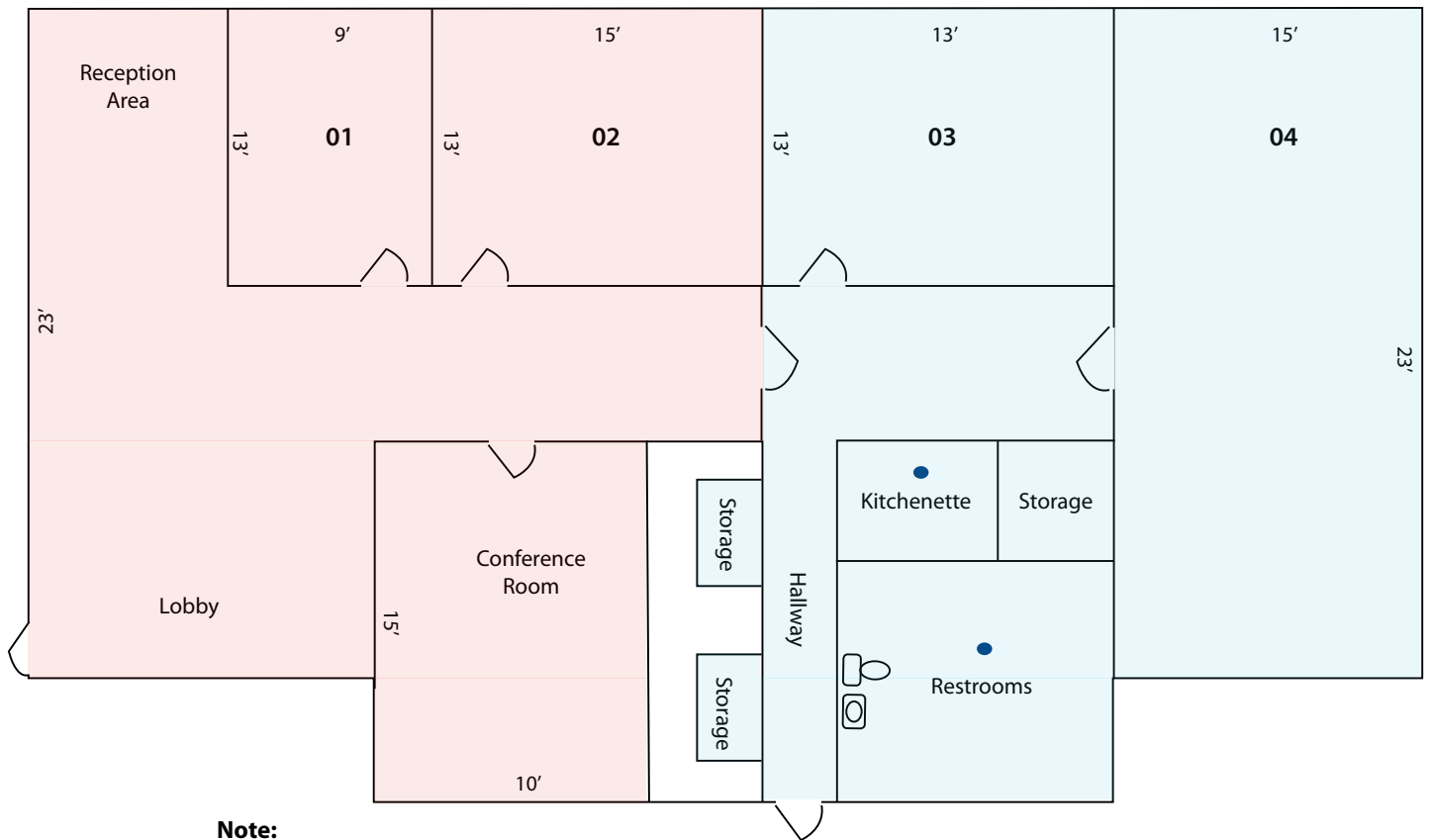
[chris.prince@avisonyoung.com](mailto:chris.prince@avisonyoung.com)

Avison Young - Greenville | 656 S Main Street, Suite 200 | Greenville, SC 29601 | 864 334 4145

© 2022. Avison Young - Greenville. Information contained herein was obtained from sources deemed reliable and, while thought to be correct, have not been verified. Avison Young - Greenville does not guarantee the accuracy or completeness of the information presented, nor assumes any responsibility or liability for any errors or omissions therein.

# Floor plan

3523 Pelham Road, Suite A



**Note:**

- Available Space
- Occupied Space
- Shared Space

Floorplan is an estimate. Please verify on-site.



**Ned Reynolds**

Vice President - Office Team  
C 336 260 3148  
ned.reynolds@avisonyoung.com

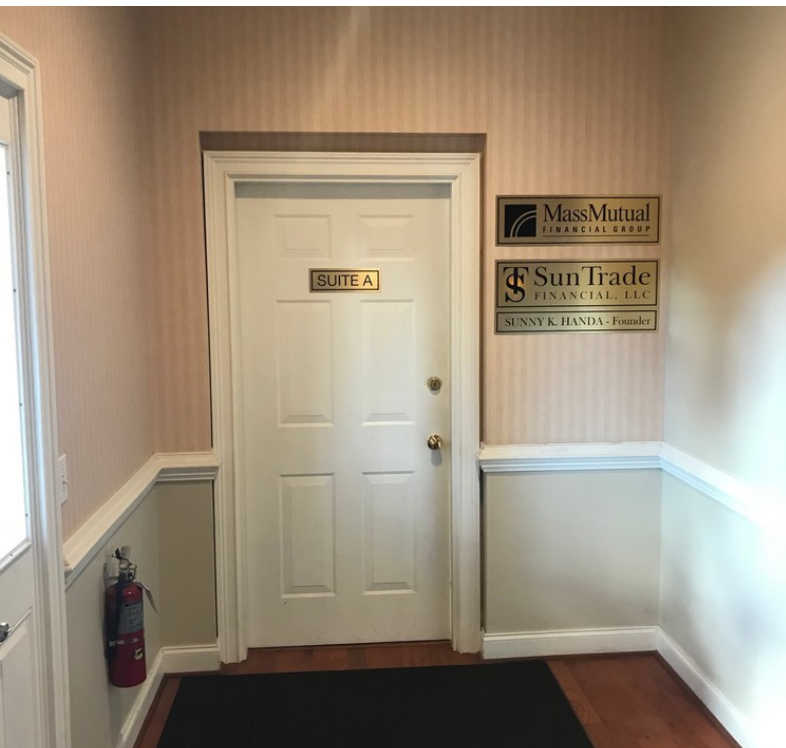
**Chris Prince, MBA, LEED® Green Associate™**

Vice President - Office Team  
C 864 430 4957  
chris.prince@avisonyoung.com



## Interior photos

3523 Pelham Road, Suite A



**AVISON  
YOUNG**

[Ned Reynolds](#)

Vice President - Office Team

C 336 260 3148

[ned.reynolds@avisonyoung.com](mailto:ned.reynolds@avisonyoung.com)

[Chris Prince, MBA, LEED® Green Associate™](#)

Vice President - Office Team

C 864 430 4957

[chris.prince@avisonyoung.com](mailto:chris.prince@avisonyoung.com)

Avison Young - Greenville | 656 S Main Street, Suite 200 | Greenville, SC 29601 | 864 334 4145

© 2022. Avison Young - Greenville. Information contained herein was obtained from sources deemed reliable and, while thought to be correct, have not been verified. Avison Young - Greenville does not guarantee the accuracy or completeness of the information presented, nor assumes any responsibility or liability for any errors or omissions therein.



# Let's talk.

**Ned Reynolds**

Vice President - Office Team

C 336 260 3148

[ned.reynolds@avisonyoung.com](mailto:ned.reynolds@avisonyoung.com)

**Chris Prince, MBA, LEED® Green Associate™**

Vice President - Office Team

C 864 430 4957

[chris.prince@avisonyoung.com](mailto:chris.prince@avisonyoung.com)

Avison Young - Greenville | 864 334 4145  
656 S Main Street, Suite 200 | Greenville, SC 29601

© 2022. Avison Young - Greenville. Information contained herein was obtained from sources deemed reliable and, while thought to be correct, have not been verified. Avison Young - Greenville does not guarantee the accuracy or completeness of the information presented, nor assumes any responsibility or liability for any errors or omissions therein.

---

**AVISON  
YOUNG**

---