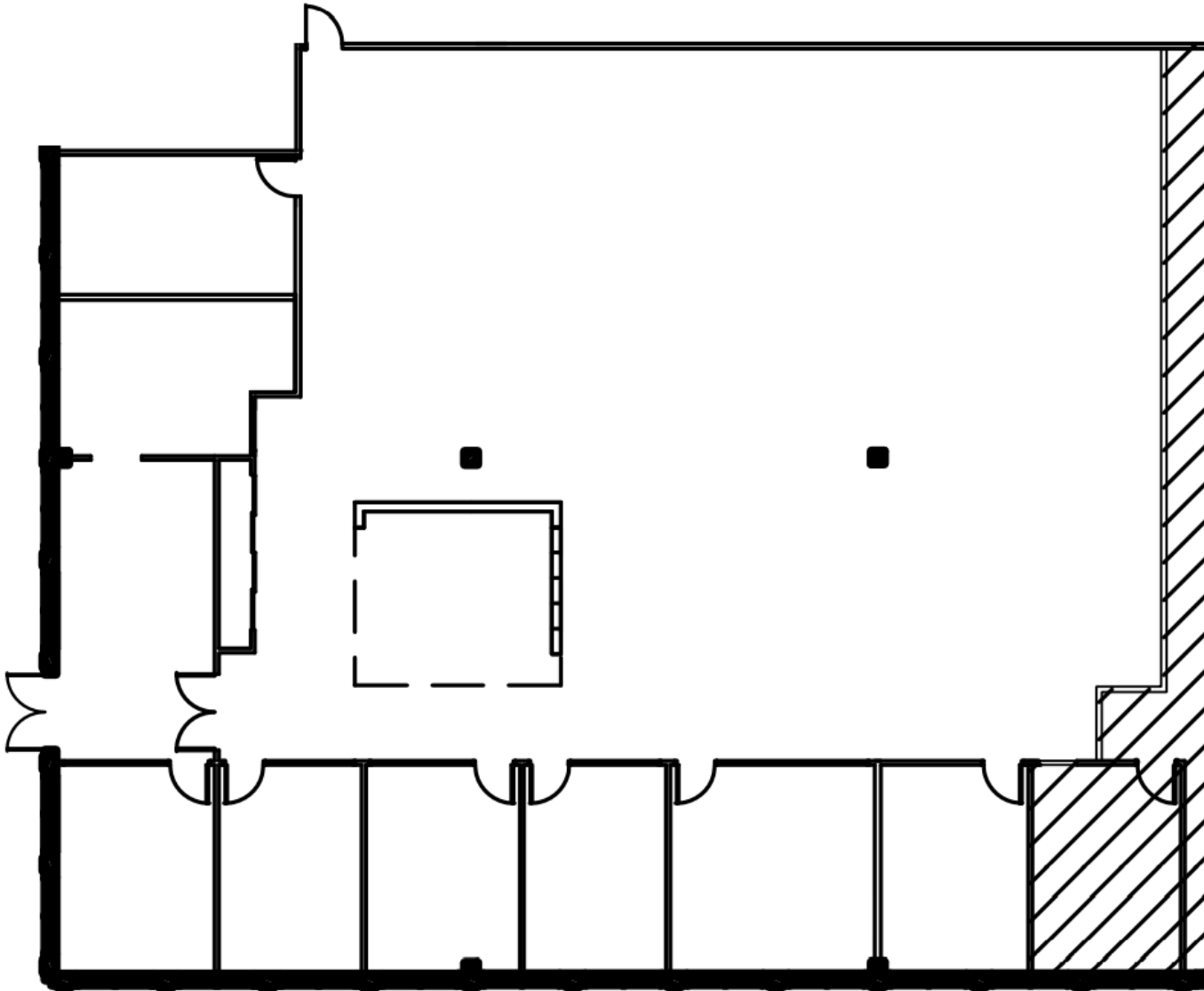


# SUITE 410 | 6,915 SF

1400 S WOLF RD | WHEELING, IL



## SPACE NOTES

- Generous build out allowance
- Exterior entrance
- Signage available
- Newly renovated common areas



OWNED AND MANAGED BY



**JOHN MILLNER**

630.480.6342

JMillner@VersaRES.com

**RYAN MOEN**

630.480.6346

RMoen@VersaRES.com

1 MID AMERICA PLAZA, 3RD FLOOR  
OAKBROOK TERRACE, IL 60181  
630.480.6413

EXCLUSIVELY LISTED BY

**VERSA**  
REAL ESTATE SERVICES