

# Good Samaritan Medical Building Medical Space Available

401 15th Ave SE, Puyallup WA 98372

**FOR LEASE:**



**Lease Rate:** \$30.60 SF, NNN

**Features:** **BENEFITS:**

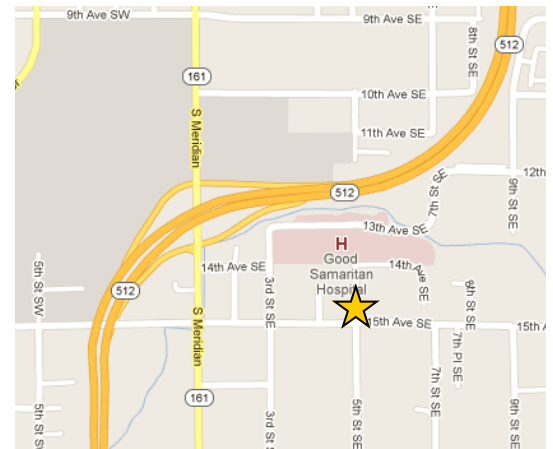
- Located at the Main Entrance to the Hospital (provides quick access for physicians on-call)
- Abundant Parking (5 stalls / 1,000)
- Secure Covered Physician Parking
- Valet Parking

**Additional Info:**

[www.goodsammedicalspace.com](http://www.goodsammedicalspace.com)

**SERVICES:**

- Laboratory
- Maternal Fetal Medicine
- Occupational Medicine
- Nephrology
- Obstetrics/Gynecology
- Orthopedics & Sports Medicine
- Urology



Located Directly Off Highway 512

- Pain Management
- Hanger Prosthetics
- Physical Therapy & Rehab
- Physical & Hand Therapy
- Pulmonary
- Surgical Hospitalists
- Vascular Surgery
- Pulse Heart Institute
- Diagnostic Imaging

**Contact Information :**

929 East Main, Suite 320  
Puyallup, WA 98372

**Steve Offenbecher, CCIM**

253.840.5574  
Steve@Offenbecher.com

**Valerie Offenbecher**

253.840.5574  
Valerie@Offenbecher.com

# Good Samaritan Medical Building Medical Space Available

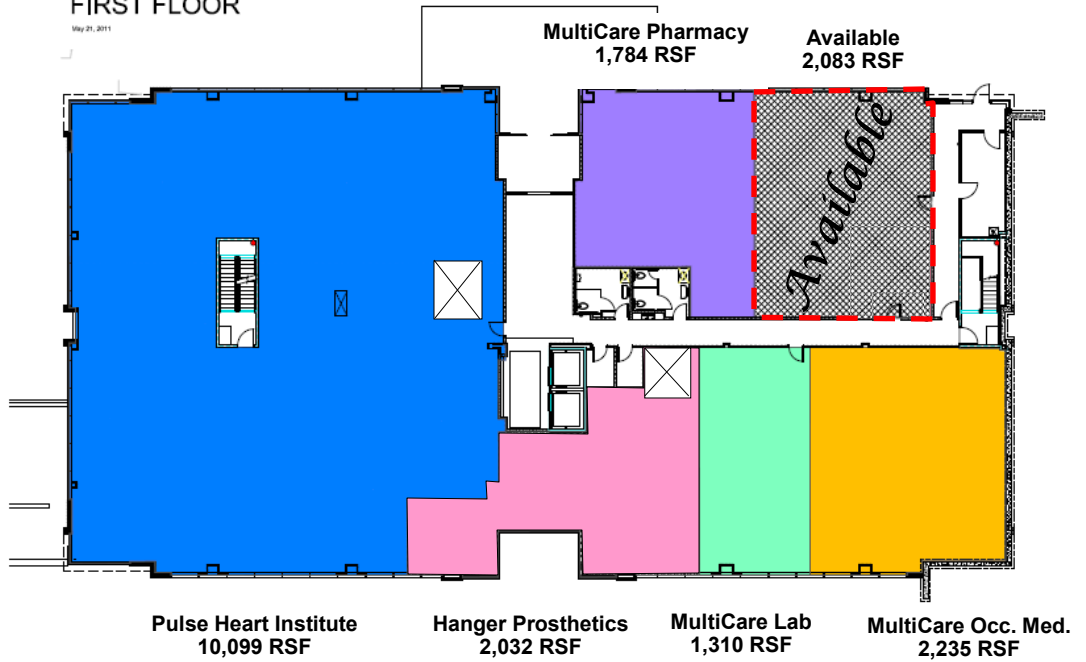
401 15th Ave SE, Puyallup WA 98372

## FIRST FLOOR

May 21, 2011

**1st Floor  
 Available Space:**

--- 2,083 RSF

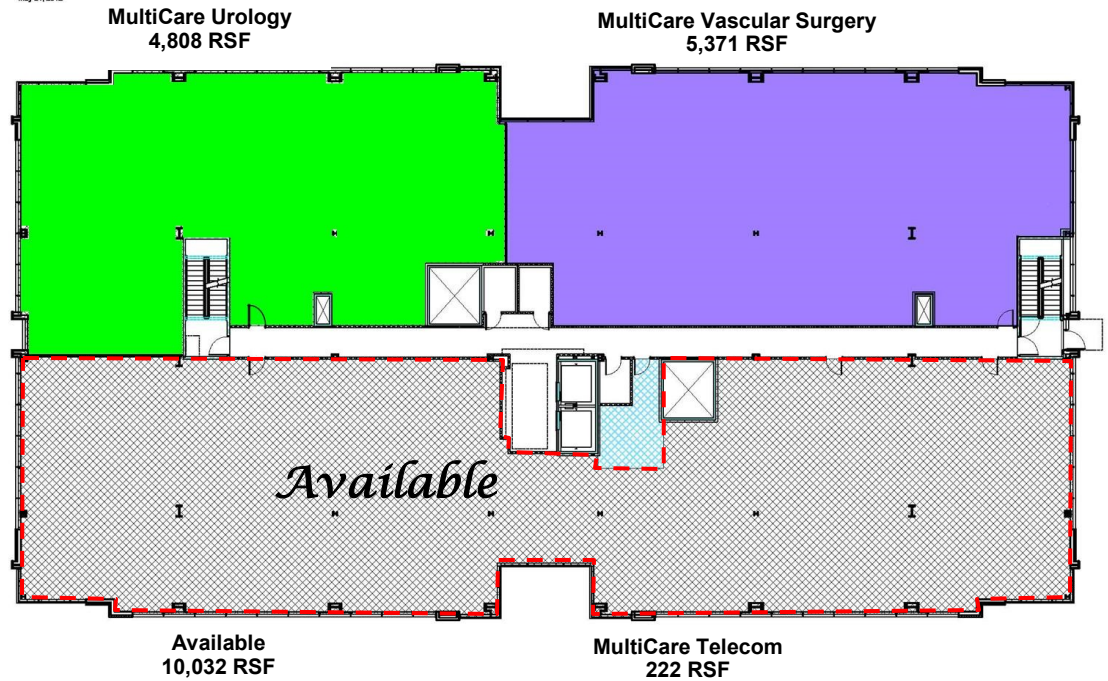


## SECOND FLOOR

May 21, 2012

**2nd Floor  
 Available Space:**

--- 10,032 RSF



### Contact Information :

929 East Main, Suite 320  
 Puyallup, WA 98372

### Steve Offenbecher, CCIM

253.840.5574  
 Steve@Offenbecher.com

### Valerie Offenbecher

253.840.5574  
 Valerie@Offenbecher.com

# Good Samaritan Medical Building Medical Space Available

401 15th Ave SE, Puyallup WA 98372

**3rd Floor  
Available Space:**

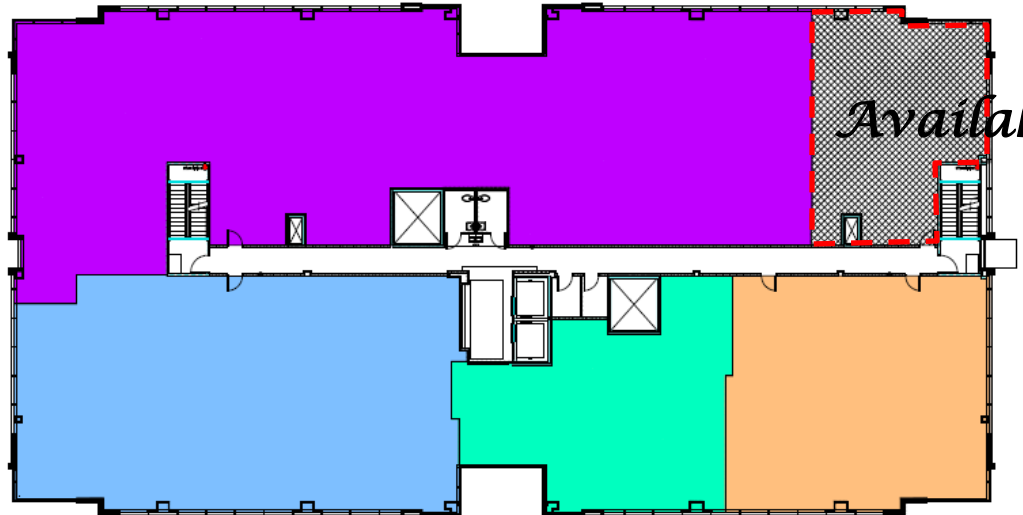
--- 1,684 RSF

## THIRD FLOOR

May 21, 2011

**MultiCare OB/MFM Clinic  
8,598 RSF**

**Available  
1,684 RSF**



**MultiCare Pulmonary  
4,898 RSF**

**MultiCare Nephrology  
2,252 RSF**

**MultiCare Pain Management  
2,905 RSF**

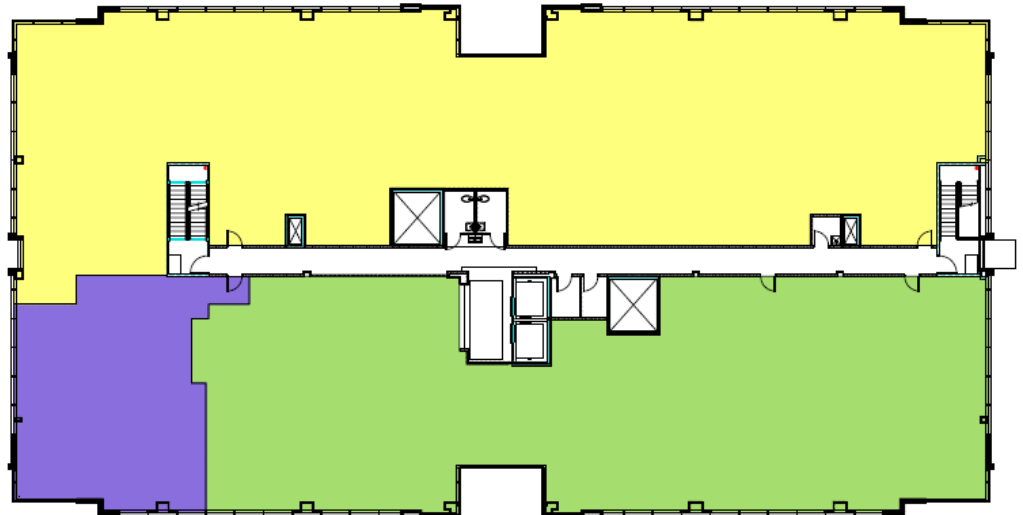
## FOURTH FLOOR

May 21, 2012

**MultiCare Orthopedics  
10,281 RSF**

**4th Floor  
Available Space:**

Fully Leased



**Diagnostic Imaging  
2,057 RSF**

**MultiCare PT  
8,000 RSF**

### Contact Information :

929 East Main, Suite 320  
Puyallup, WA 98372

**Steve Offenbecher, CCIM**

253.840.5574  
Steve@Offenbecher.com

**Valerie Offenbecher**

253.840.5574  
Valerie@Offenbecher.com