

An architectural rendering of a modern, multi-story office building with a curved glass facade and a prominent curved section. The building is set against a clear blue sky. In the foreground, a paved plaza features a row of young trees, a cyclist, and several pedestrians. The overall scene is bright and clear.

200

BROOMIELAW

It's all happening at 200 Broomielaw, Glasgow

A major refurbishment to deliver 79,300 sq ft over 9 floors

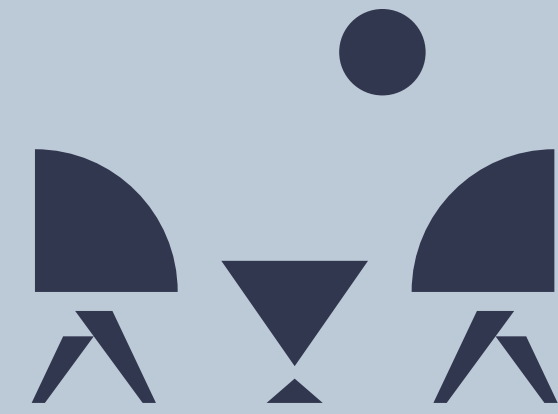
First impressions
are everything





CONCIERGE

Dedicated concierge for use by all occupants



TERRACE

A terrace on the 7th floor with beautiful views of the Clyde



BUSINESS LOUNGE

A new high quality business lounge



SECURITY

Slimline speed lanes with secure entry



CONNECTIVITY

WiredScore Certification



FLOORPLATES

Flexible floorplates with river views

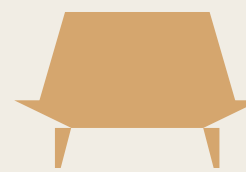
Everything you need and more

200 Broomielaw has been designed with you in mind: from the flexible floorplates with river views to the excellent cycling and changing facilities, it'll make work better and more exciting.



WELLNESS

A yoga/wellness studio to relax and unwind



RECEPTION

Modern arrival & waiting area



CHANGING

Gym style changing rooms with individual showers, drying room & WCs



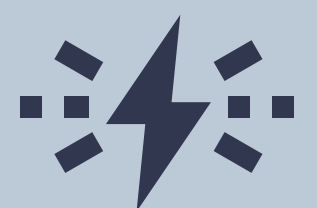
CYCLING

Cycle storage for 42 bikes including E-bike charging points



SAFETY

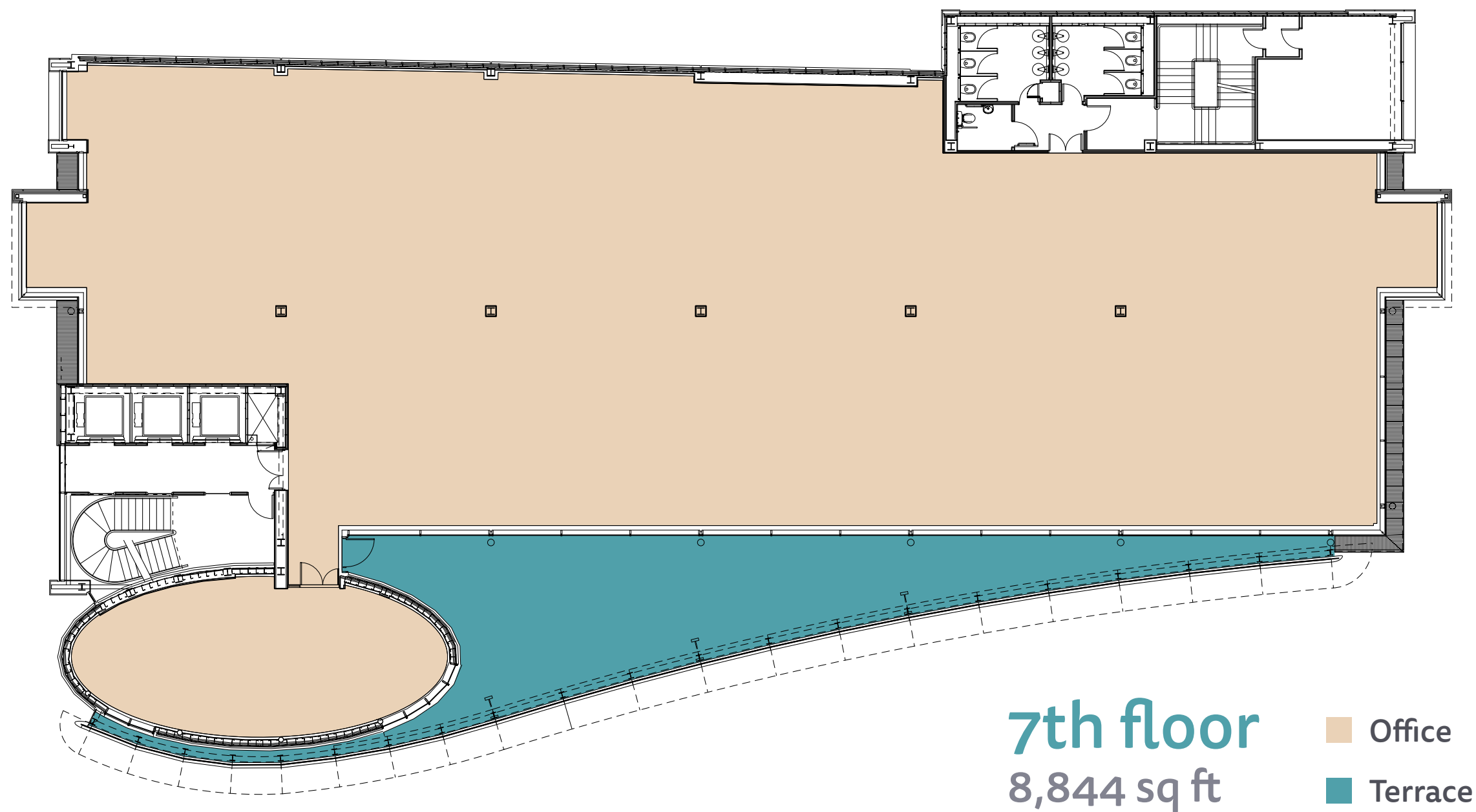
COVID ready: touch free access etc



CAR PARKING

19 secure car parking spaces with 4 electrical charging points

Impressive on every level



Office
Office & private terrace
Office
Office
Office
Office
Office
Office
Office
Office, reception & business lounge
Cycle storage, changing rooms & yoga studio

Floor	NIA (sq ft)	NIA (sq m)
8	8,665	805.0
7	8,844	821.6
6	9,041	839.9
5	8,930	829.6
4	8,930	829.6
3	8,930	829.6
2	8,930	829.6
1	8,930	829.6
G	8,031	829.6
B	-	-
	79,231	7,360.6



Indicative floor plate

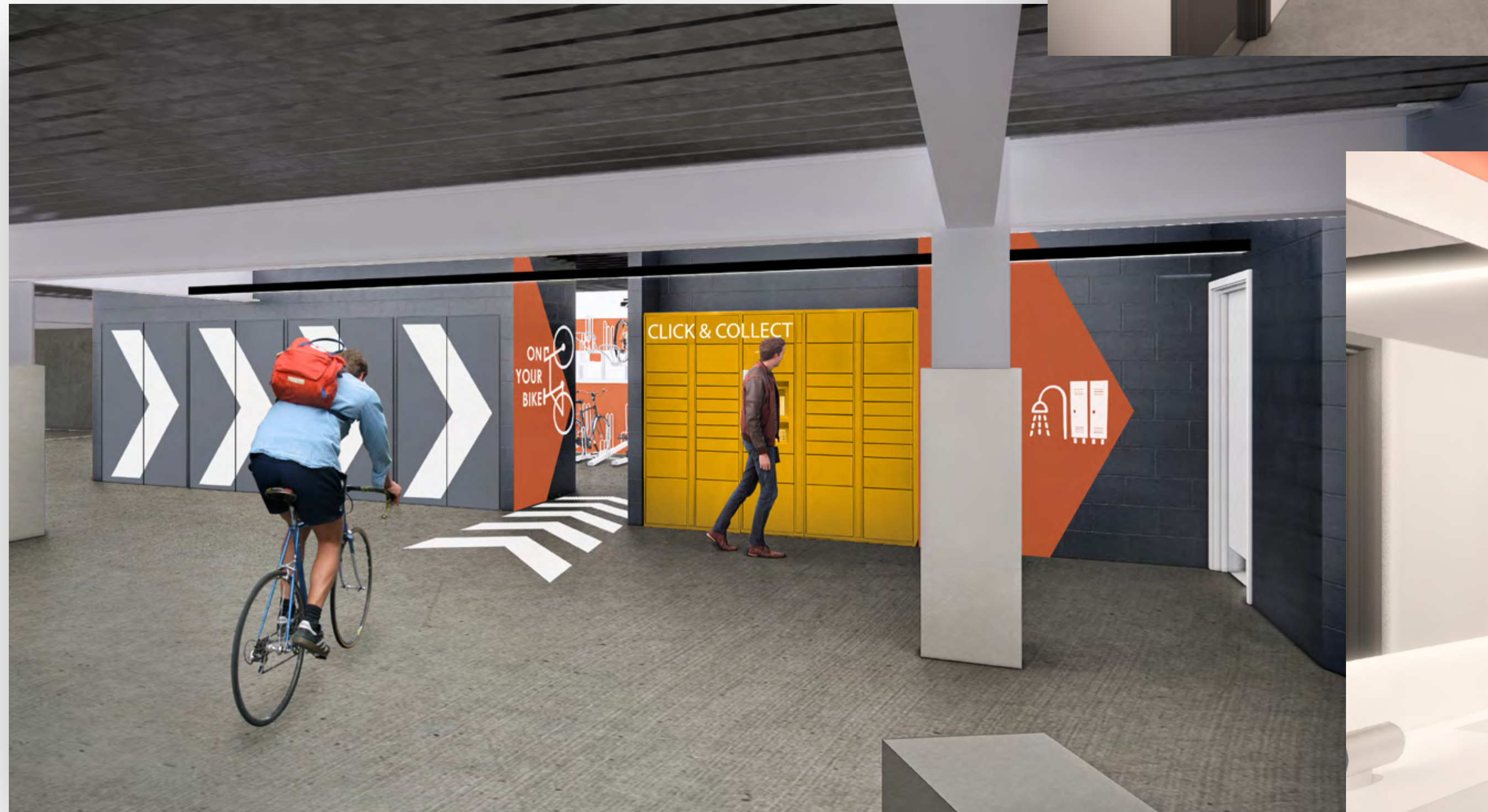


Views from the 7th floor terrace



Work out at work

The building redesign includes convenient click and collect lockers and a full wellness suite making it easy to cycle to and from work, go for a run or grab a yoga session



Basement plan

FITNESS STUDIO
A yoga/wellness studio to relax and unwind

CHANGING FACILITIES
Gym style changing rooms with individual showers, drying room & WCs

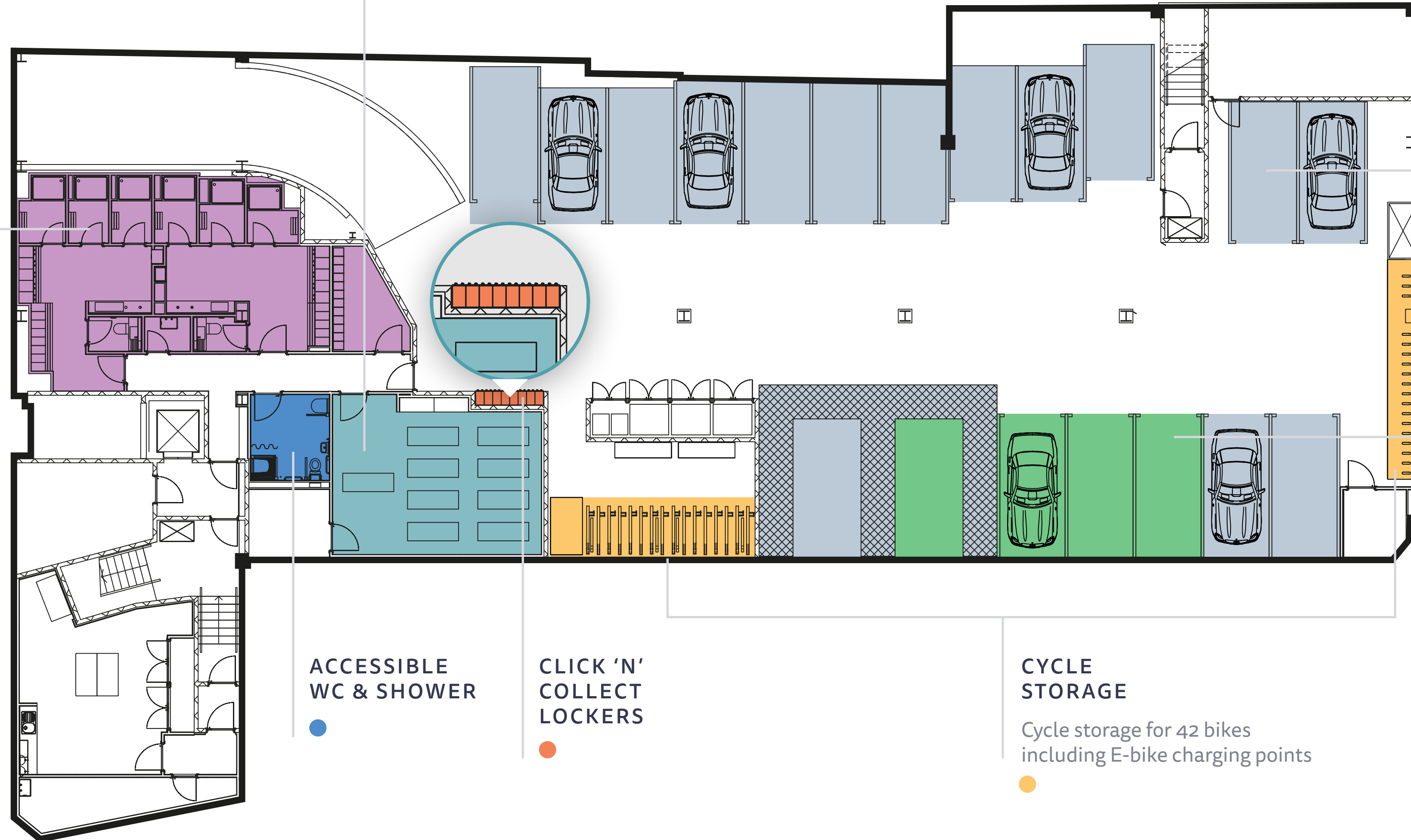
CAR PARKING
19 secure car parking spaces with 4 electrical charging points

ACCESSIBLE WC & SHOWER

CLICK 'N' COLLECT LOCKERS

CYCLE STORAGE

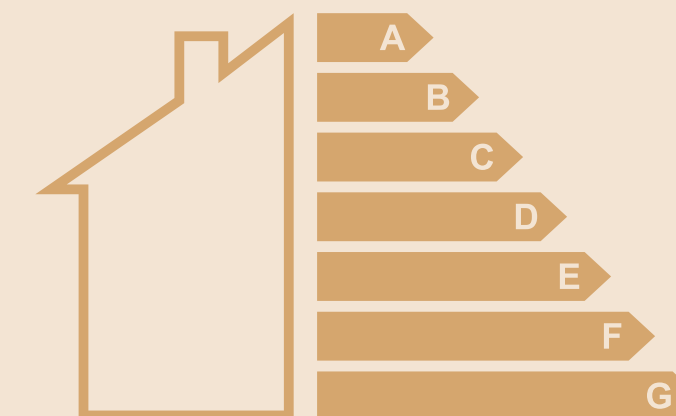
Cycle storage for 42 bikes including E-bike charging points



Wellbeing and doing well

The changes we've made to 200 Broomielaw are designed to make you more comfortable and happier at work, which can lead to being more efficient and productive.

- EPC rating of 'B' targeted
- Touch-free building access
- Electric car charging points
- LG7 compliant LED lighting
- Storage for recyclable materials
- Touch-free sensor taps
- Platinum CycleScore Certification
- WiredScore certification





In great company

- 1 Scottish Power
- 2 KPMG
- 3 Santander
- 4 AXA
- 5 Student Loans Company
- 6 Ministry of Defence
- 7 Morgan Stanley
- 8 CYBG
- 9 Scottish Enterprise
- 10 Barclays
- 11 Pinsent Masons
- 12 HMRC
- 13 BT
- 14 Barclays
- 15 DWP, McTaggart & Mickel
- 16 Scottish Courts & Tribunals
- 17 MacRoberts, AON, ATOS
- 18 Scottish Government
- 19 Esure
- 20 Direct Line Group
- 21 JP Morgan Chase
- 22 Lloyds
- 23 Education Scotland
- 24 SSE

 Cycle routes



301km

Cycle lanes in Glasgow



2 mins walk

Frequent buses in operation

2



BROOMIELAW



9 mins walk

St Enoch Subway

From here to everywhere

50 mins drive

Edinburgh



8 mins walk

Glasgow Central Station



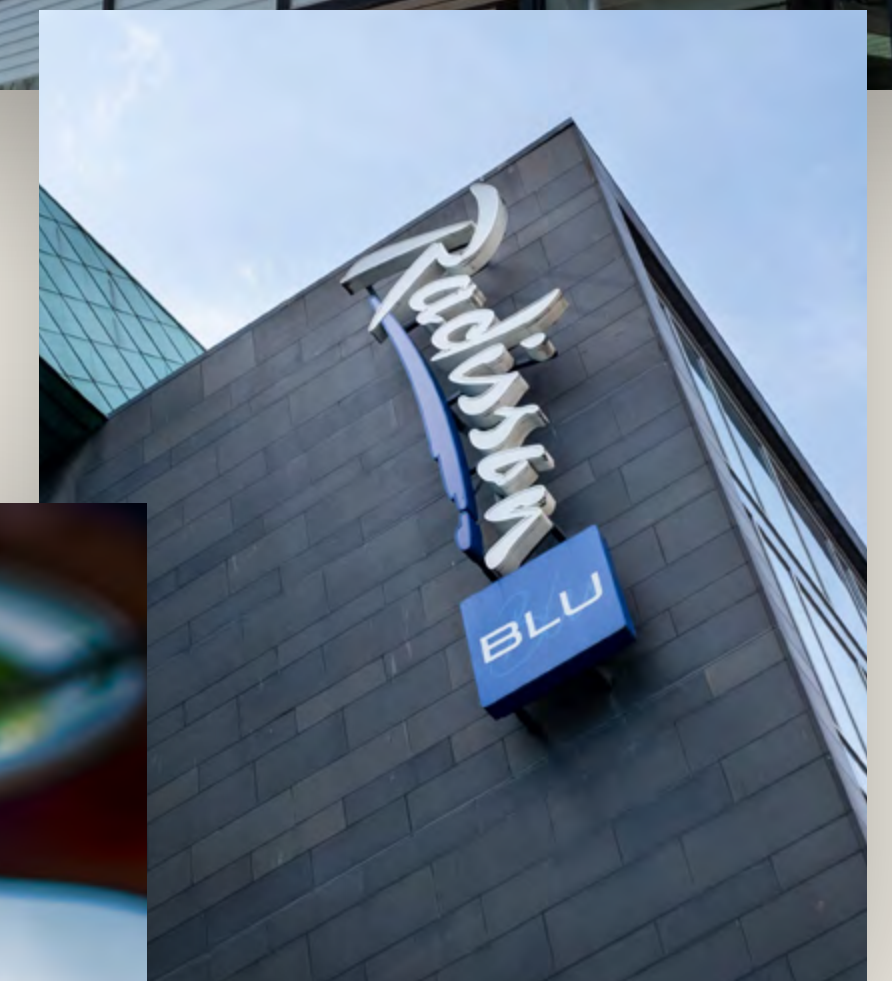
15 mins drive

Glasgow Airport



Life on the waterfront

Whether you're just grabbing a quick bite for breakfast, looking to enjoy a leisurely lunch, or planning drinks after work, there's lots of choice just a few minutes' walk from 200 Broomielaw.





For all enquiries, please contact:

Reith
Lambert

Audrey Dobson
07780 888987
audrey@reithlambert.co.uk



Alistair Reid
07711 054848
alistair.reid@eu.jll.com

A development by:



Managed by:



MISREPRESENTATION ACT 1967 JLL and Reith Lambert for themselves and for the vendors or lessors of these properties whose agents they are, give notice that:
i) The particulars are set out as a general outline only for the guidance of intending purchasers or lessees and do not constitute, nor constitute part of an offer or contract.
ii) All descriptions, references to condition and necessary permission for use and occupation and other details are given in good faith and are believed to be correct, but any intending purchaser or tenant should not rely on them as statements or representations of fact but must satisfy themselves by inspection or otherwise as to the correctness of each of them.
All dimensions and areas are approximate. iii) No person in the employment of has any authority to make or give any representation or warranty in relation to this property.

FINANCE ACT 1989 Unless otherwise stated, all prices and rentals quoted are exclusive of Value Added Tax to which they may be subject.

PROPERTY MISDESCRIPTIONS ACT 1991 These details are believed to be correct at the time of compilation, but may be subject to subsequent amendment. April 2021

200broomielaw.com