

FOR LEASE

OFFICE SPACE

6636

CHURCH STREET

Douglasville, GA 30134



FEATURES

- + 3,879 rentable square feet for lease
- + Total Property SF: 30,496 RSF
- + Parking Ratio: 1.3 spaces per 1,000 SF
- + Year Built: 1980
- + 16.00/SF/Year, Full Service



CONTACT US

SIM A. WILSON III, CPM LEED AP

First Vice President

+1 855 845 2273

sim.wilson@cbre.com

www.cbre.com

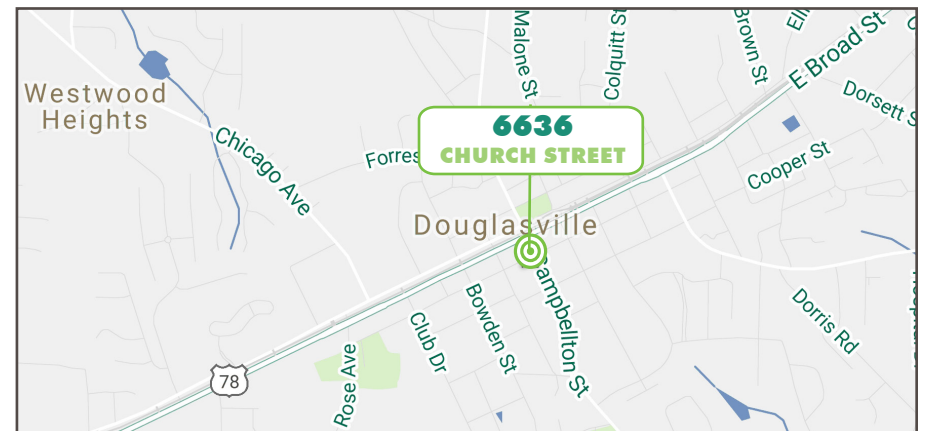
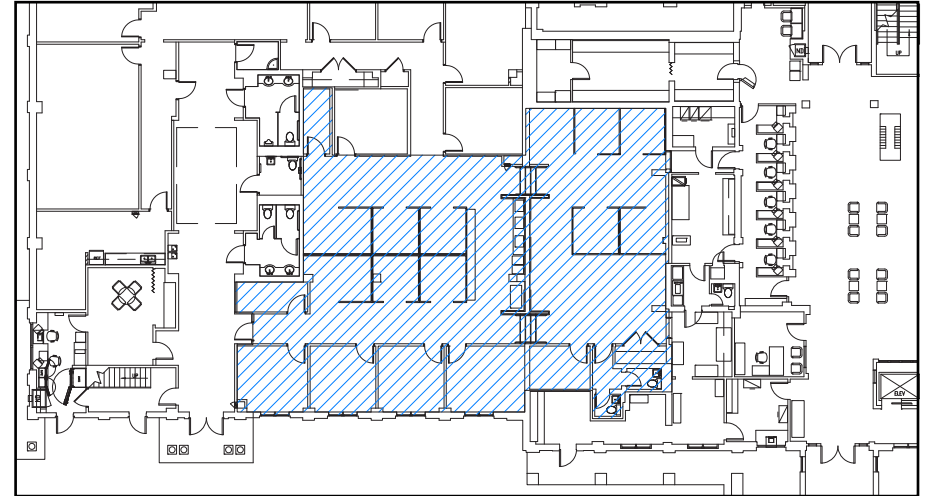
CBRE

FOR LEASE OFFICE SPACE

6636
CHURCH STREET
Douglasville, GA 30134



1st Floor | 3,879 SF



© 2016 CBRE, Inc. This information has been obtained from sources believed reliable. We have not verified it and make no guarantee, warranty or representation about it. Any projections, opinions, assumptions or estimates used are for example only and do not represent the current or future performance of the property. You and your advisors should conduct a careful, independent investigation of the property to determine to your satisfaction the suitability of the property for your needs.

Photos herein are the property of their respective owners and use of these images without the express written consent of the owner is prohibited.