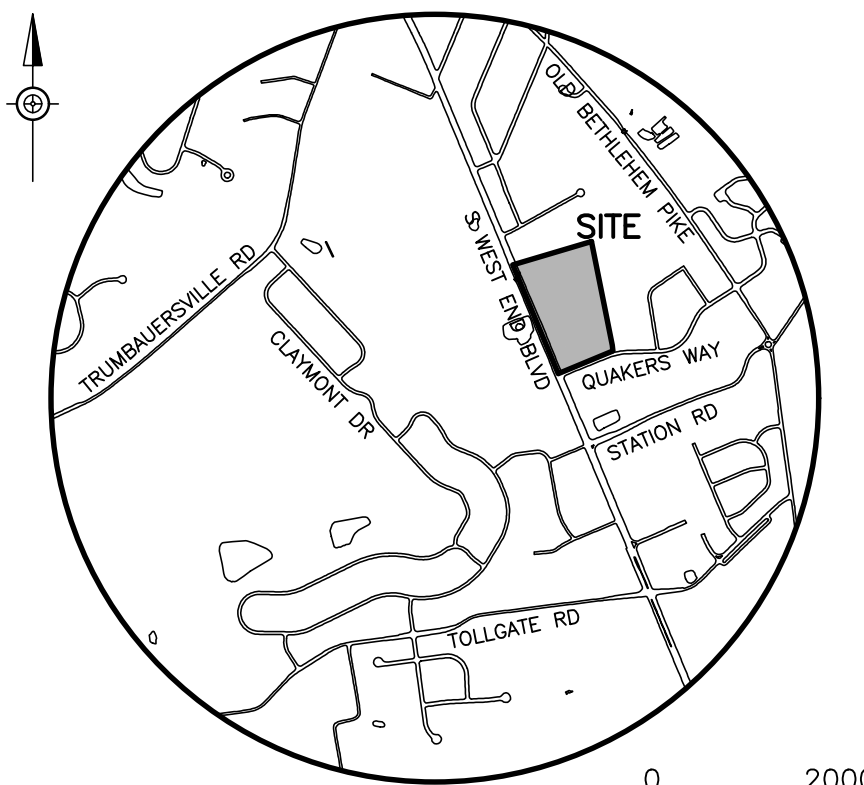




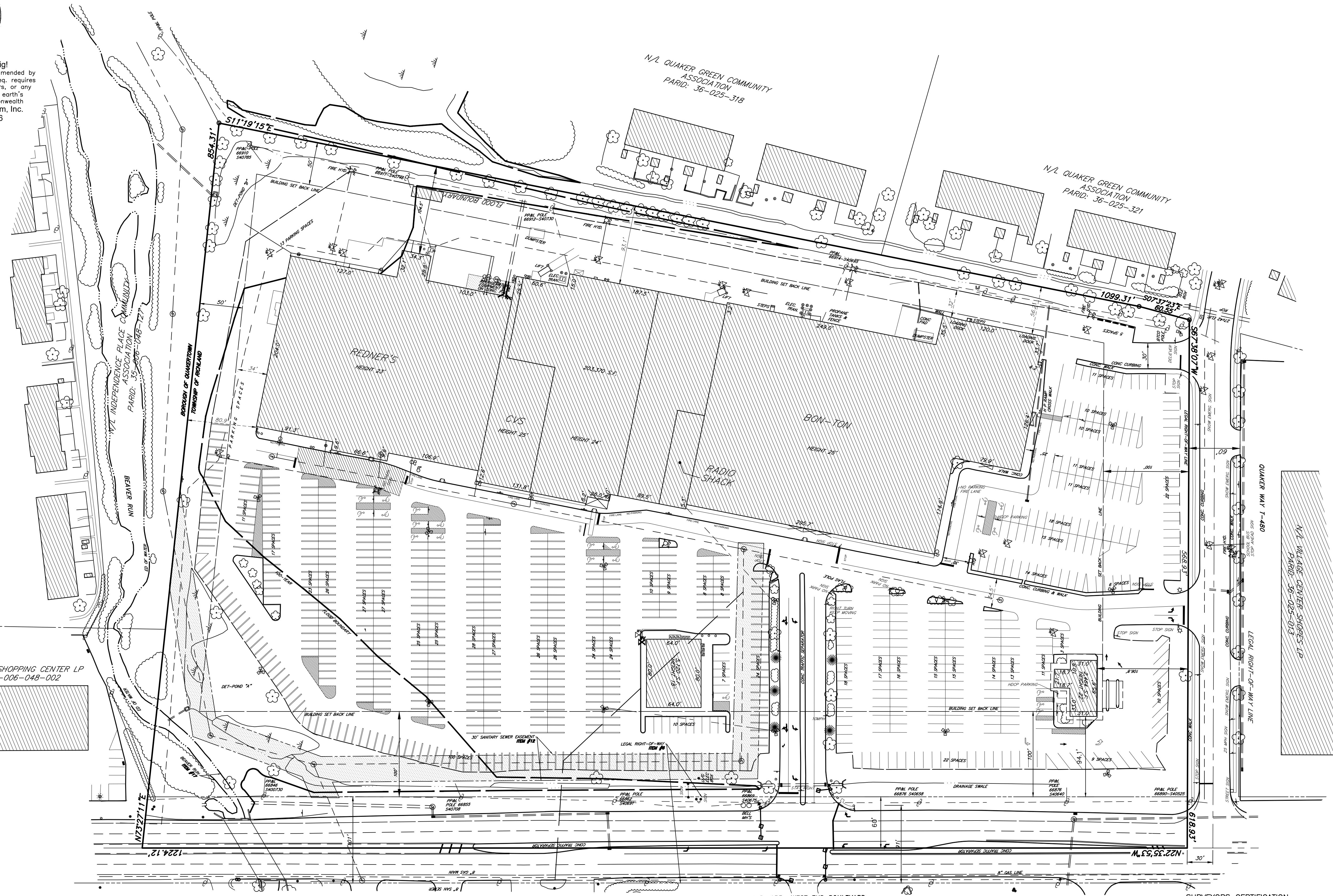
Stop - Call Before You Dig!  
 Pennsylvania Act 287 of 1974 as amended by Act 50 of 2017 73P.S. §176 et. seq. requires notification by excavators, designers, or any person preparing to disturb the earth's surface anywhere in the commonwealth Pennsylvania One Call System, Inc. 811 or 1-800-242-1776



LOCATION MAP  
 SCALE: 1"=2000'

EXISTING FEATURES LEGEND

- CONCRETE MONUMENT FOUND □
- IRON PIN FOUND ○
- BOUNDARY LINE ———
- SETBACK LINE - - - - -
- ADJOINER LINE - - - - -
- LEGAL RIGHT OF WAY - - - - -
- EASEMENT LINE - - - - -
- CURB LINE ———
- FLOODPLAIN ———
- PAINTED LINE ———
- EDGE OF PAVING - - - - -
- FENCE LINE ———
- WOODS LINE ———
- TREES ○
- SANITARY SEWER MAIN ———
- SANITARY SEWER CLEANOUT ○
- SANITARY SEWER MANHOLE ⊙
- STORM SEWER PIPING ———
- STORM SEWER INLET ○
- STORM SEWER MANHOLE ⊙
- WATER MAIN ———
- FIRE HYDRANT ○
- WATER VALVE ○
- WATER SERVICE ———
- GAS VALVE ○
- TRAFFIC SIGNAL POST ○
- OVERHEAD WIRES ———
- AIR CONDITIONING UNIT □
- LIGHT POLE ○
- UTILITY POLE ○
- UTILITY GUY ———
- ELECTRIC BOX □
- ELECTRIC METER □
- TRANSFORMER □
- DETECTABLE WARNING STRIP ———
- HANDICAP PARKING SPACE □
- FLAG POLE ○
- SIGN ○
- HOSE BIBB ○
- BOLLARD ○
- SLANTED TEXT DENOTES EXISTING FEATURE



N/L WEST END SHOPPING CENTER LP  
 PARID: 36-006-048-002

ROUTE 309 L.R. 153 WEST END BOULEVARD

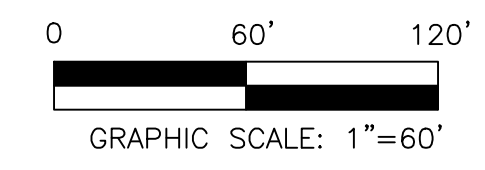
SURVEYORS CERTIFICATION:

TO VELOCITY VENTURES, FIRST AMERICAN TITLE INSURANCE COMPANY, TRUIST BANK, A NORTH CAROLINA BANKING CORPORATION, AS ADMINISTRATIVE AGENT, ITS SUCCESSORS AND ASSIGNS AS THEIR INTERESTS MAY APPEAR AND ROYAL ABSTRACT NATIONAL LLC.

THIS IS TO CERTIFY THAT THIS MAP OR PLAT AND THE SURVEY ON WHICH IT IS BASED WERE MADE IN ACCORDANCE WITH THE 2021 MINIMUM STANDARD DETAIL REQUIREMENTS FOR ALTA/NSPS LAND TITLE SURVEYS, JOINTLY ESTABLISHED AND ADOPTED BY ALTA AND NSPS, AND INCLUDES ITEMS 2, 3, 4, 6a, 6b, 7a, 7b1, 7c, 8, 9, 10, 11a, 13, 14, 16, 17, AND 18 OF TABLE "A" THEREOF. THE FIELD WORK WAS COMPLETED ON 11/16/2022.

DATE OF SURVEY MAP: 12/06/22

SIGNATURE OF SURVEYOR  
 DANE K. MOYER  
 REGISTRATION NUMBER: SU-056988-E  
 DANE.MOYER@BURSICH.COM



© COPYRIGHT BURSICH ASSOCIATES, INC., 2022.  
 ALL RIGHTS RESERVED. THIS MAP OR PLAT AND THE SURVEY ON WHICH IT IS BASED WERE MADE IN ACCORDANCE WITH THE 2021 MINIMUM STANDARD DETAIL REQUIREMENTS FOR ALTA/NSPS LAND TITLE SURVEYS, JOINTLY ESTABLISHED AND ADOPTED BY ALTA AND NSPS, AND INCLUDES ITEMS 2, 3, 4, 6a, 6b, 7a, 7b1, 7c, 8, 9, 10, 11a, 13, 14, 16, 17, AND 18 OF TABLE "A" THEREOF. THE FIELD WORK WAS COMPLETED ON 11/16/2022.

NO.	REVISION	DATE	BY

MANAGER: JRA

DESIGN: — CHKD. BY: —

DRAFT: TLJ CHKD. BY: —

FILE: VEL-00 DATE: 12/07/2022

NOTES: SCALE: 1"=60'

**BURSICH ASSOCIATES**  
 ENGINEERS, LAND SURVEYORS, LANDSCAPE ARCHITECTS  
 2120 EAST HIGH STREET  
 POTTSTOWN, PA 19864  
 610.323.4040  
 www.bursich.com

CLIENT

**VELOCITY VENTURES**  
 1 BELMONT AVE  
 SUITE 520  
 BALA CYNWYD PA 19004

SUBJECT

ALTA/NSPS LAND TITLE SURVEY

**RICHLAND MALL**  
**751 S WEST END BLVD**

RICHLAND TOWNSHIP, BUCKS COUNTY, PENNSYLVANIA

JOB NO. 228322-00

SHEET NO. 1 OF 2

DWG. NO. CA128322