

For Sale or Lease | 5,000 SF Fully Equipped Restaurant/Cafe

3235 N. Central Ave, Chicago, IL 60634

CRER



Broker Information



Michael Weaver
Commercial Broker

Chicago Real Estate Resources, Inc.
800 W. Diversey Pkwy., Suite 300
Chicago, IL 60614

Office: 773-327-9300
Cell: 312-446-5018
MichaelW@CRER.com

CRER.com



For Sale or Lease | 5,000 SF Fully Equipped Restaurant/Cafe

3235 N. Central Ave, Chicago, IL 60634

CRER

HIGHLIGHTS

Rental Rate
\$16.00 /SF/YR

Gross Leasable Area
9,200 SF

Property Type
Retail

Size
5,000 SF

Term
Negotiable

Type
Triple Net NNN

Availability
October 2020

DESCRIPTION

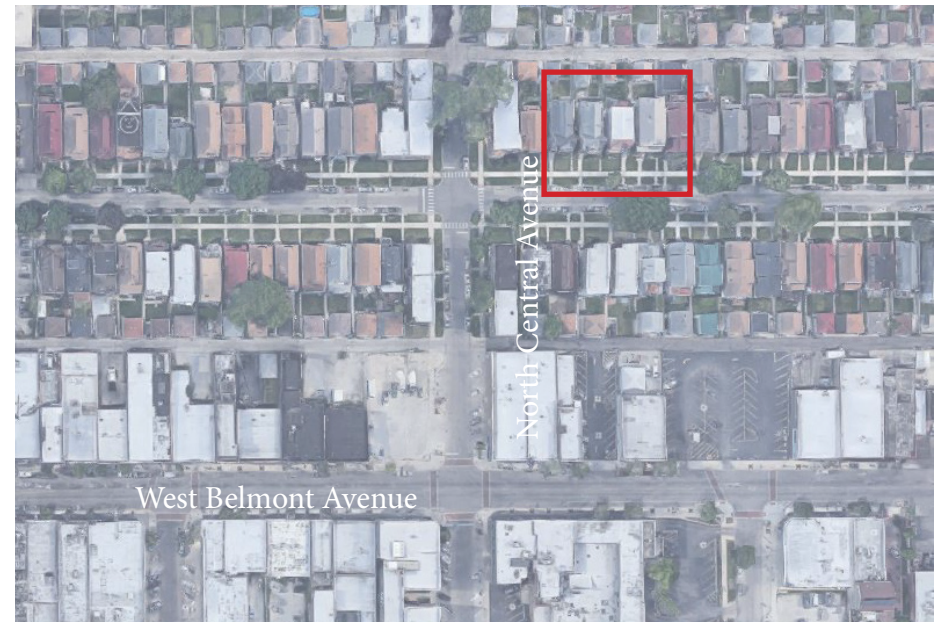
Great Retail location at corner of Central Avenue & Melrose Street.

Neighboring retailers include; Tony's Finer Foods, One Main Financial, Cricket Wireless, Metro PCS, Boost Mobile, Chase Bank, Walgreens.

Formally Mather Cafe - Fully equipped restaurant, 5,000 SF with 12' hood and large dining area.

Ideal space for Integrative health.

Space includes workout area as well as space for yoga.



For Sale or Lease | 5,000 SF Fully Equipped Restaurant/Cafe

3235 N. Central Ave, Chicago, IL 60634



For Sale or Lease | 5,000 SF Fully Equipped Restaurant/Cafe

3235 N. Central Ave, Chicago, IL 60634



For Sale or Lease | 5,000 SF Fully Equipped Restaurant/Cafe

3235 N. Central Ave, Chicago, IL 60634



5,000 SF of Office/Retail Space Available in Chicago, IL

3235 N Central Ave, Chicago, IL 60634

CRER

Broker Information



Michael Weaver
Commercial Broker

Chicago Real Estate Resources, Inc.
800 W. Diversey Pkwy., Suite 300
Chicago, IL 60614

Office: 773-327-9300
Cell: 312-446-5018
MichaelW@CRER.com

CRER.com

