



MOUNTAIN WEST
COMMERCIAL REAL ESTATE



COMMERCE/ENTERPRISE DR.

4520 SOUTH COMMERCE DRIVE • ST GEORGE • UTAH • 84790

FOR LEASE

PROPERTY SPECS

- Building Size: 11,840 SF
 - Divisible into 2 units
 - Capable for 2-story Office Space
 - 1,000 to 1,500 SF Office on each floor
- 1.21-acres
- Clean Yard Space
- 4 - 12'x12' GL Overhead Doors
- Clear Height: 24'
- Construction Type: Block Masonry
- Zoned: M-1
- Corner Lot in Ft. Pierce Industrial Park
- Available Mid 2022
- Call for Pricing

CONTACT:



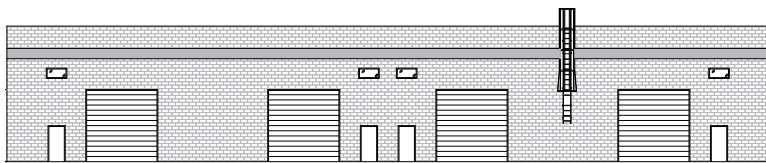
DOUG SCHEEL, OWNER/AGENT
dscheel@mtwest.com
direct 435.256.8773
[View Profile](#)

TROY SCHEEL, OWNER/AGENT
tscheel@mtwest.com
direct 435.256.8774
[View Profile](#)

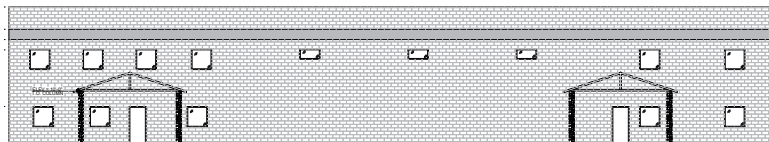


Best Commercial
Real Estate
Of Southern Utah

COMMERCE/ENTERPRISE DR.



REAR BUILDING ELEVATION
SCALE: 1/8" = 1'-0"



FRONT BUILDING ELEVATION
SCALE: 1/8" = 1'-0"

