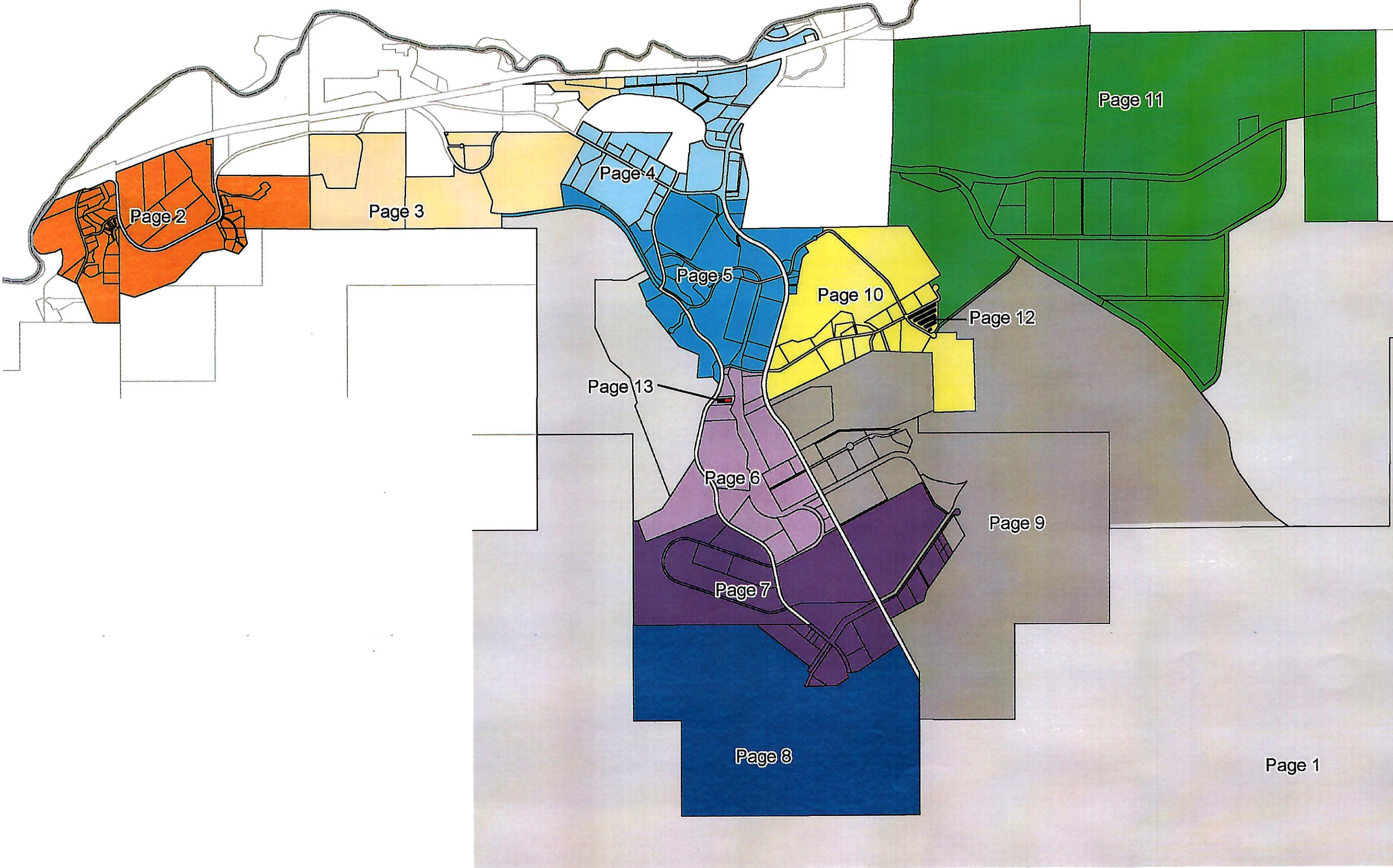


24 Hr Recorded Property Description 1-800-639-6716 Ext. 1112



FOR AUTOCAD FILE EMAIL JOHN MACDONALD: JOHN@RECNV.COM DIMENSIONS SHOWN ARE APPROXIMATE

REO

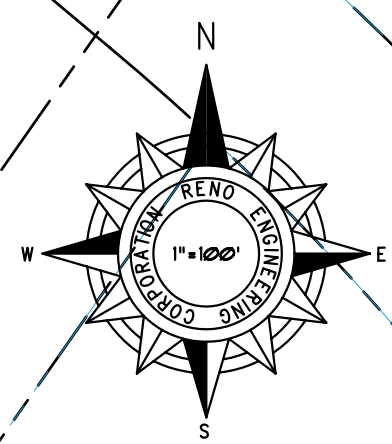
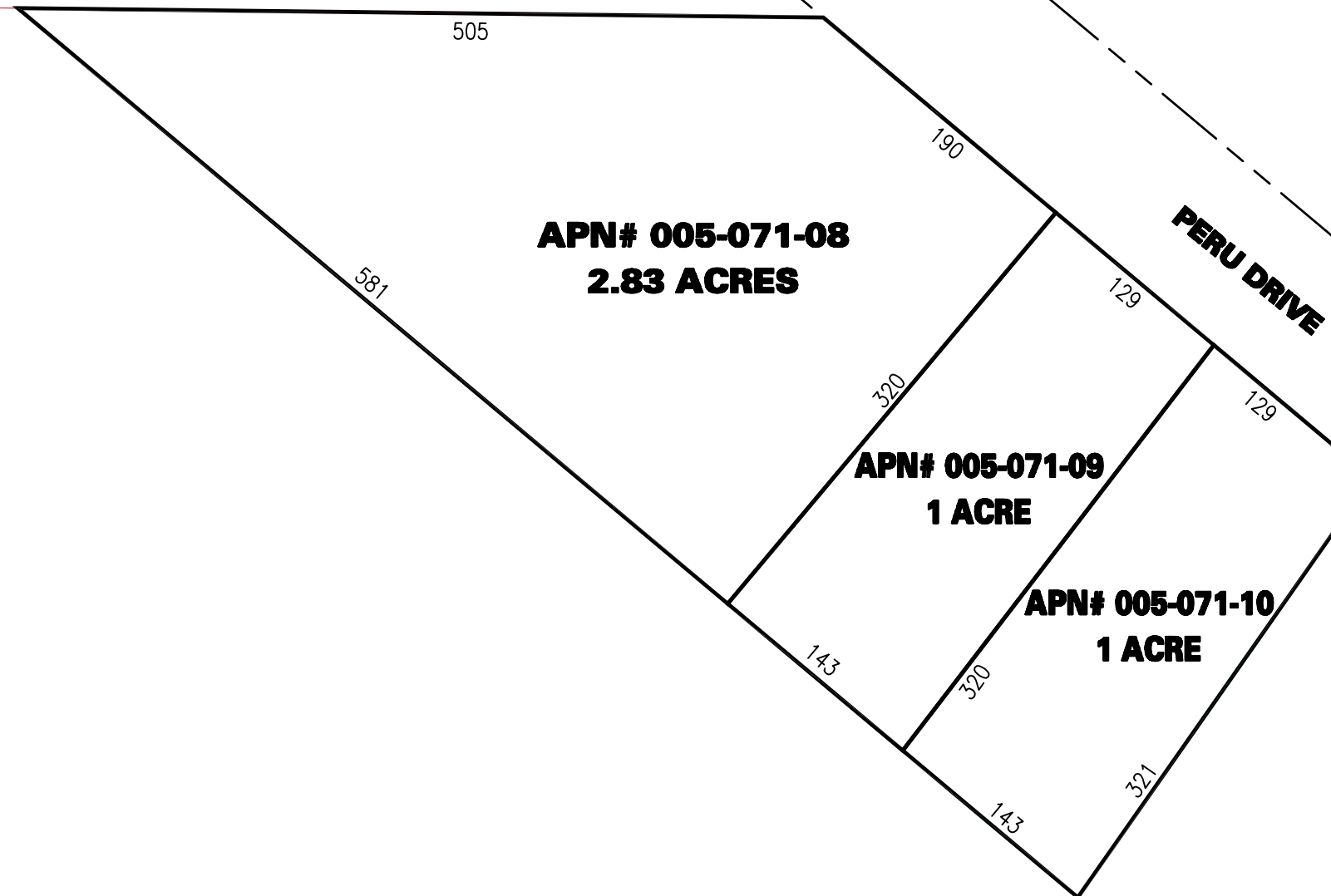
EXHIBIT B - VICINITY/APN MAP

1

RENO ENGINEERING CORPORATION
CIVIL ENGINEERING - DESIGN - LAND PLANNING
8726 TECHNOLOGY WAY, SUITE C, RENO, NV 89521
PHONE: (775) 852-5700 FAX: (775) 852-5707
FOR AUTOCAD SITE DRAWING: EMAIL - JOHN@RECNV.COM

DIMENSIONS SHOWN ARE APPROXIMATE

24 Hr Recorded Property Description 1-800-639-6716 Ext. 1112



FOR AUTOCAD FILE EMAIL JOHN MACDONALD: JOHN@RECNV.COM		FOR AUTOCAD FILE EMAIL JOHN MACDONALD: JOHN@RECNV.COM	
DIMENSIONS SHOWN ARE APPROXIMATE		DIMENSIONS SHOWN ARE APPROXIMATE	
RENO ENGINEERING CORPORATION		RENO ENGINEERING CORPORATION	
CIVIL ENGINEERING DESIGN - LAND PLANNING		CIVIL ENGINEERING DESIGN - LAND PLANNING	
8725 TECHNOLOGY WAY, SUITE C, RENO, NV 89521		8725 TECHNOLOGY WAY, SUITE C, RENO, NV 89521	
PHONE: (775) 852-5700 FAX: (775) 852-5707		PHONE: (775) 852-5700 FAX: (775) 852-5707	
FOR AUTOCAD SITE DRAWING: EMAIL - JOHN@RECNV.COM		FOR AUTOCAD SITE DRAWING: EMAIL - JOHN@RECNV.COM	
RECO		RECO	
APN# 005-071-08, 9, 10		APN# 005-071-08, 9, 10	
DIMENSIONS SHOWN ARE APPROXIMATE		DIMENSIONS SHOWN ARE APPROXIMATE	
SITE ACREAGE: 2.83 ACRES		SITE ACREAGE: 2.83 ACRES	
APN# 005-071-08, 9, 10		APN# 005-071-08, 9, 10	
ADDRESS: XX PERU DRIVE		ADDRESS: XX PERU DRIVE	
RAIL SERVED: N		RAIL SERVED: N	
ROUGH GRADED: N		ROUGH GRADED: N	
UTILITIES: IN ROAD		UTILITIES: IN ROAD	
3		3	